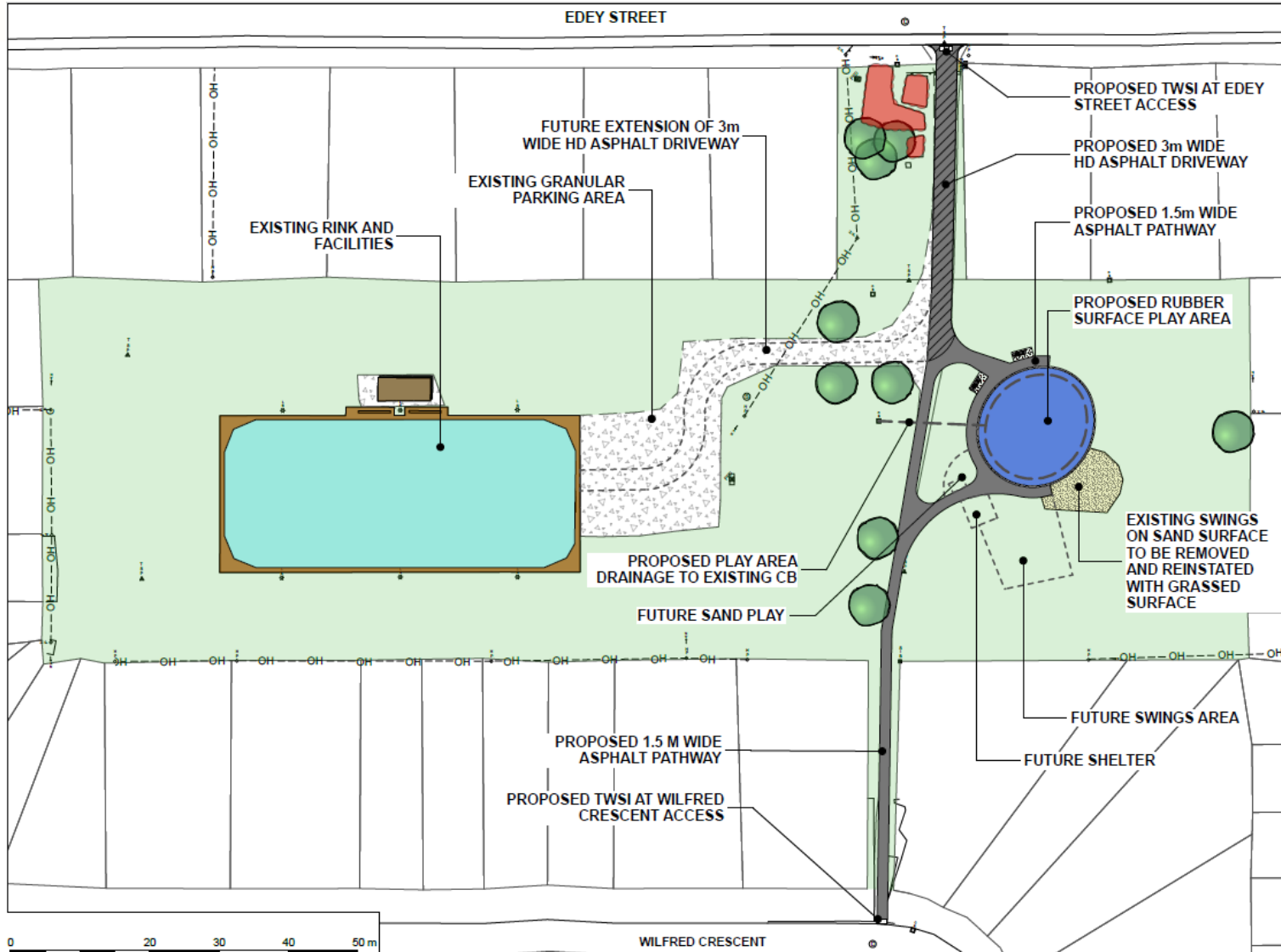


Legion Park Site Overview





Legion Park

- Legion Park
 - With the installation of the Sullivan Rink of Dreams, Legion Park has become one of the more prominent park spaces in our community.
 - While this park has always had a swing set, it does not have a play structure, save for the one across the street at John XXIII School.
 - This new structure will sit on a rubber play surface to enhance accessibility and safety while supporting more accessible play features.
 - This project is included in our 2023 Capital Budget at \$250,000.
 - \$129,797 – ICIP Grant Funding
 - \$120,203 – 70% Parkland Development, 30% DC
 - This project will also include asphalt pathways connecting Edey Street and Wilfred Crescent.

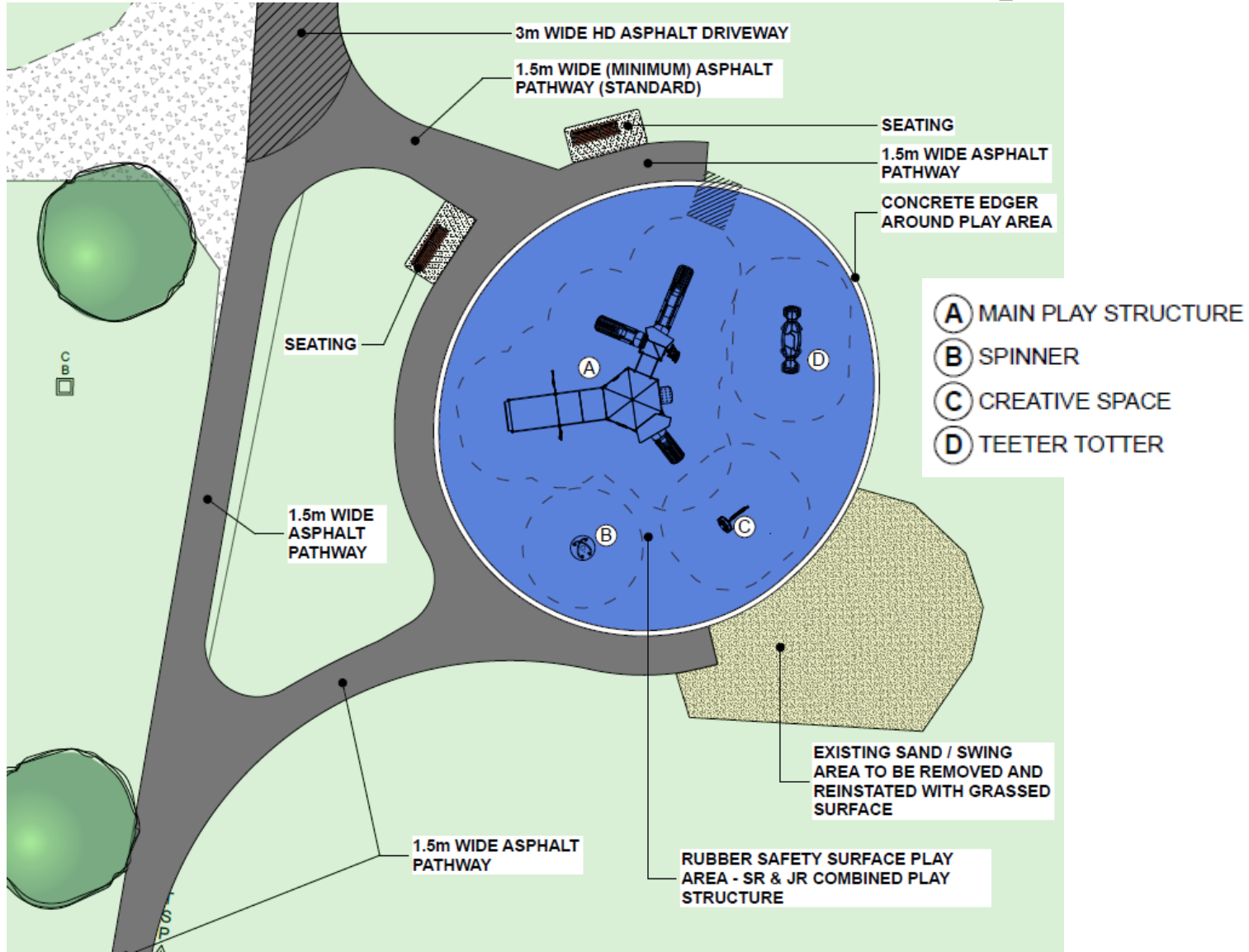


Legion Park

Concept Description

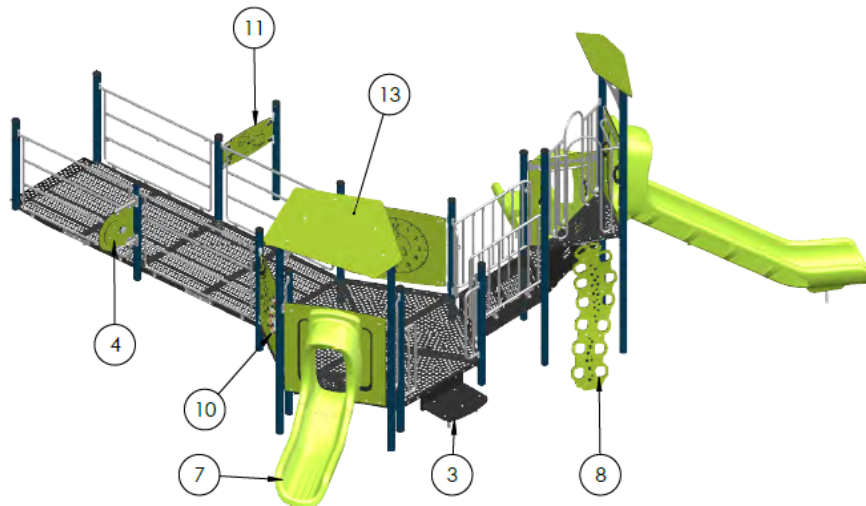
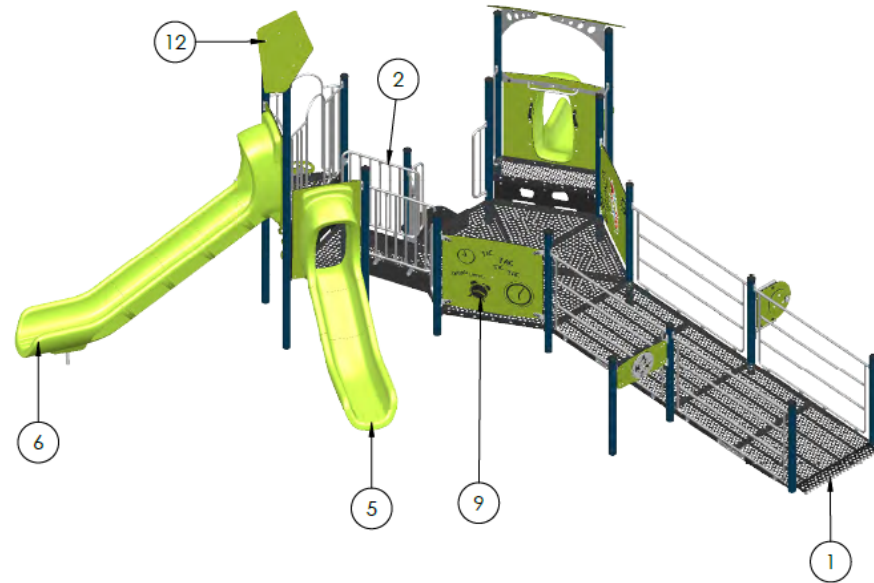
- 2023 Legion Parks Upgrade Goal: provide a fully accessible play structure(s) with a pathway system connecting Edey Street and Wilfred Crescent. Accessible components include physical accessibility meeting the latest standards, sensory components (tactile, audible, visual, movement) providing universal accessibility.
- All concepts provide a range of accessible components on a flush rubber surface to maximize accessibility by all. Both options provides an alternative with or without a ramp. The alternatives with the ramp (1A and 2A) allows for standard wheelchair access to portions of the upper structure with not as many 'at grade' components. The alternatives without a ramp (1B & 2B) provides more opportunities 'at grade' with transfer stations for accessibility to the structure itself. Both alternatives meet universal accessibility standards.
- Note: the existing swing set is past the life cycle and are due for replacement. The location of the swing set with the safety surfacing and non-encroachment zones does not allow for play expansion within this portion of the park. To meet the goal, this swing is proposed to be removed and replaced in a future phase along with future shade components.

Legion Park Site Overview – Option 1

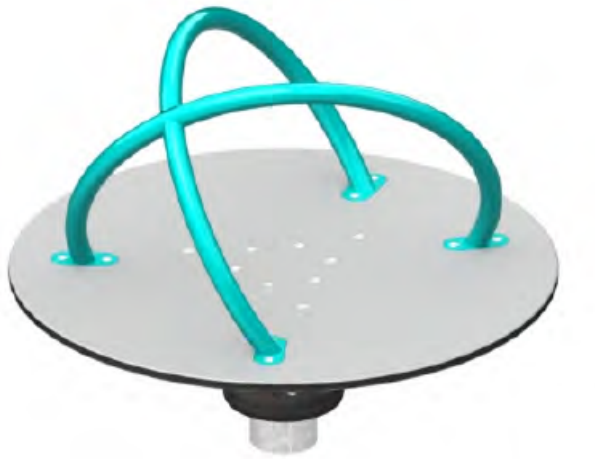


Legion Park - Option 1

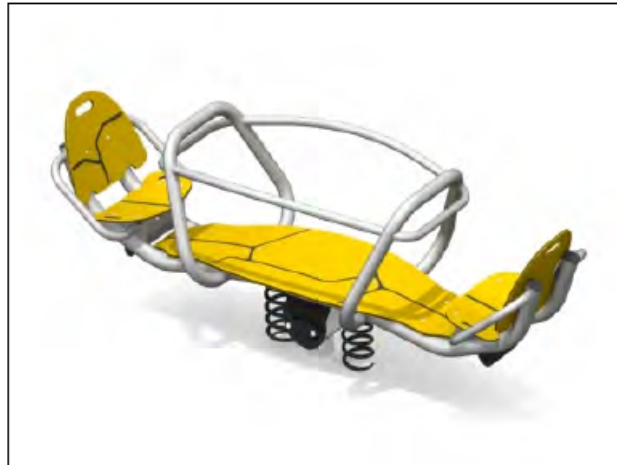
#	- DESCRIPTION -
1	Wheelchair ramp (1')(3.5 dia.post)(Handrail)
2	2' Stairs between two platforms (30-44)
3	Transfer step with handles (44)
4	Reel accessory (3.5 dia.post)
5	3' LUX Slide (I)
6	5' LUX Slide (I)
7	2' LUX Slide (I)
8	5' Neo climber
9	Clock panel (44)
10	Gear manipulation panel (44)
11	Caracters Panel (30)
12	Shade Roof (30)
13	Shade Roof (44)



Legion Park - Option 1



XYRA-45 L-20043



SILLA TEETER TOTTER 2. L-21078



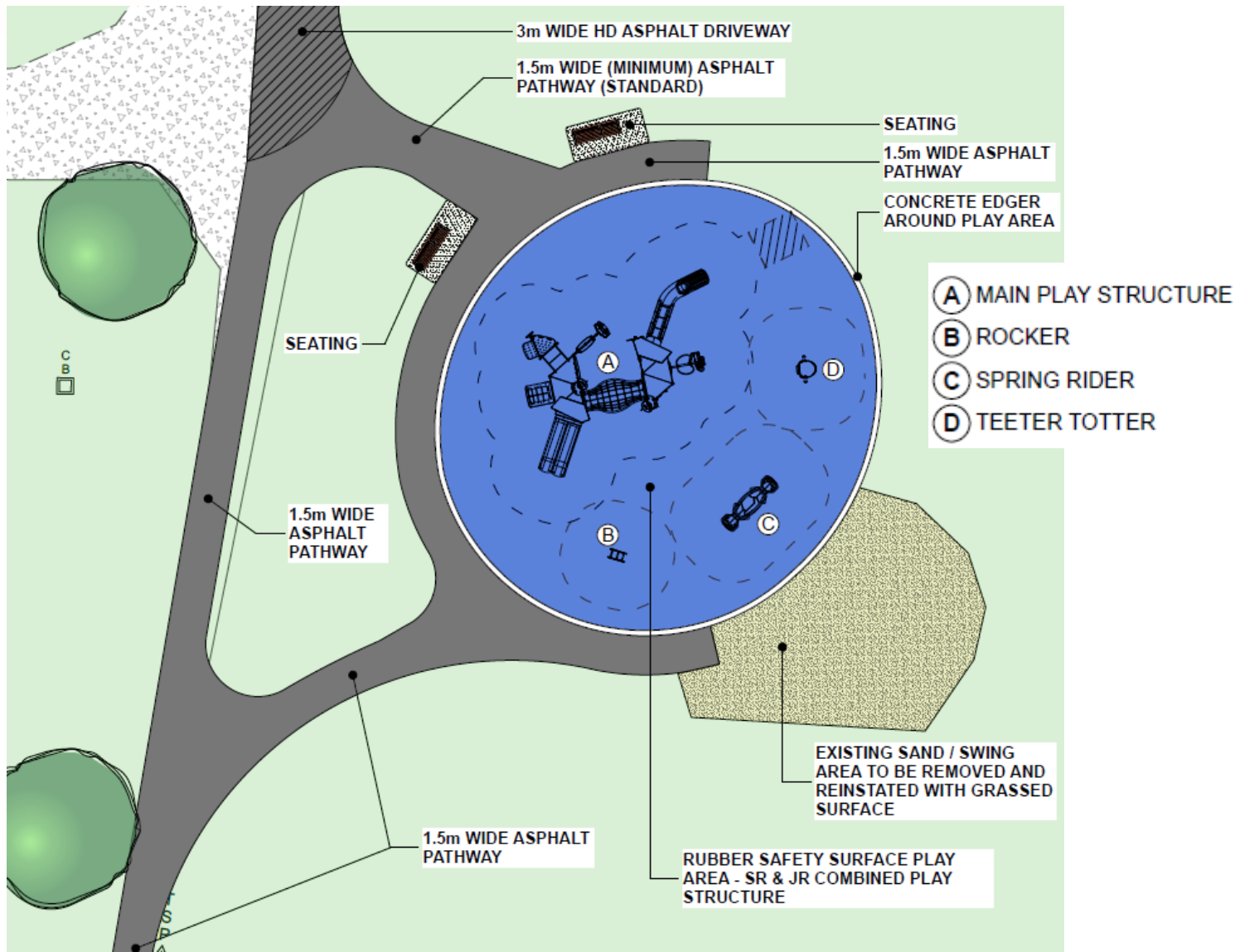
CREATIVE SPACE. L-17008-A

Legion Park - Option 1

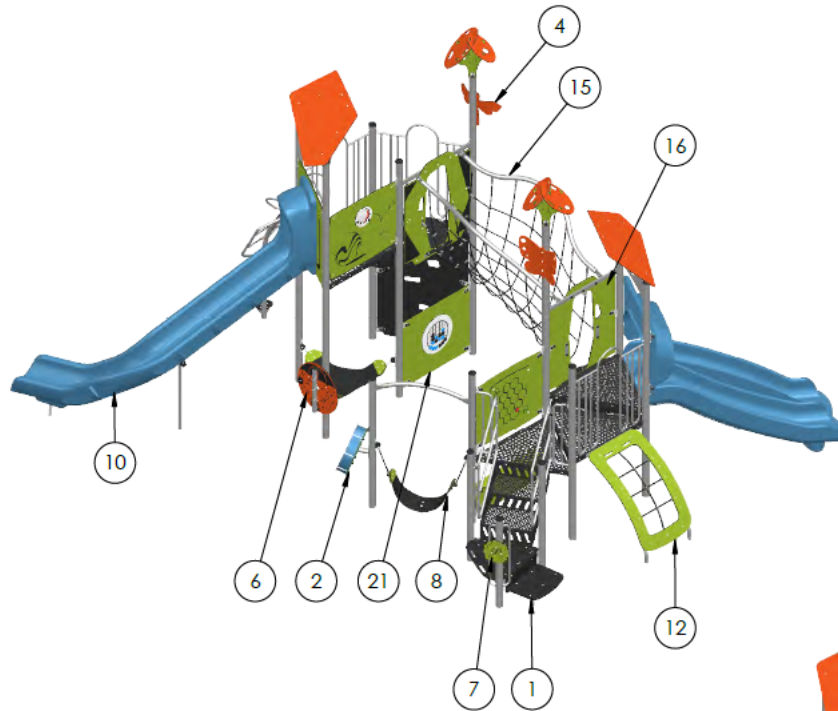


Legion Park

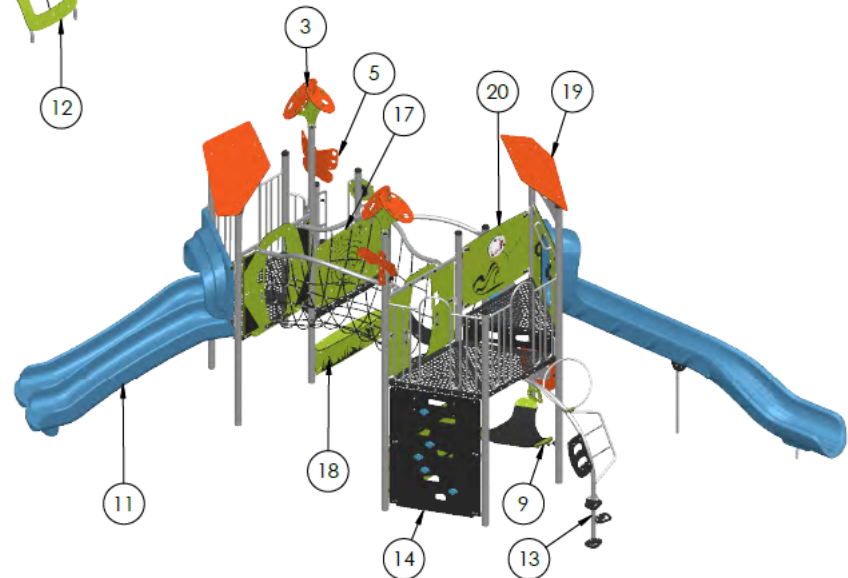
Site Overview – Option 2



Legion Park - Option 2



MAIN STRUCTURE WITHOUT RAMP

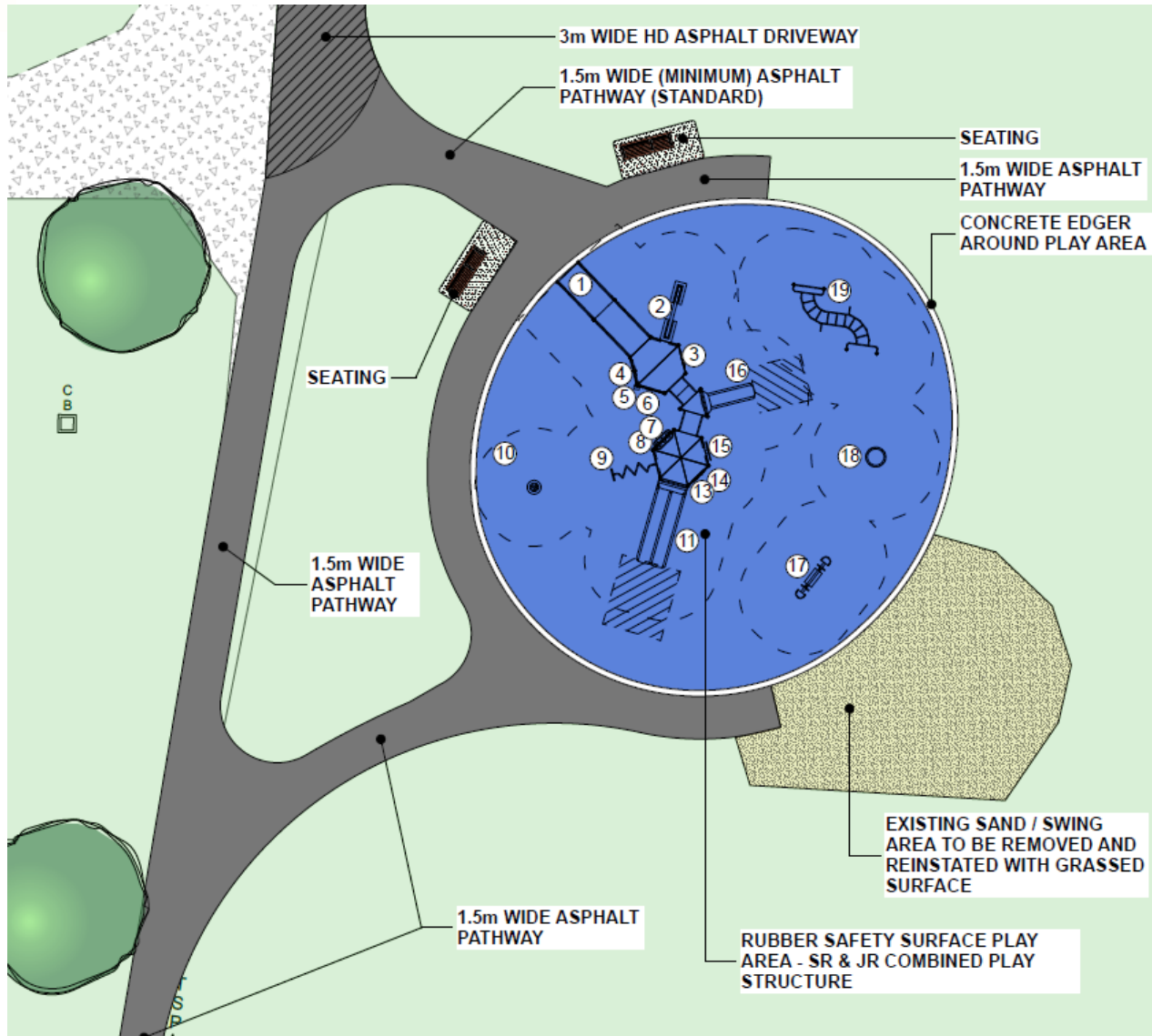


#	- DESCRIPTION -
1	3' Transfer station (44)
2	Percu-sound (3.5 dia.post)
3	Brocco Top (3.5 dia.post)
4	Dragonfly ornament
5	Butterfly ornament
6	Rain Stick (3.5 dia.post)
7	Leaves Steering Wheel (3.5 diameter post)
8	The hammock (44)
9	Cosy seat-3 (44)
10	7' LUX Slide (JO)
11	4' Double slide with waves
12	3'-6 Wave Climber
13	(6') Origin climber 1
14	6' Climbing Wall (44)
15	2' Citiplex Cable bridge
16	Citiplex cable bridge access panel (44)
17	Dog/bee manipulation maze panel (44)
18	Reptile Game Counter (44)
19	Shade Roof (44)
20	Marbles manipulation panel (44)
21	Three in a row game panel (44)

Legion Park - Option 2

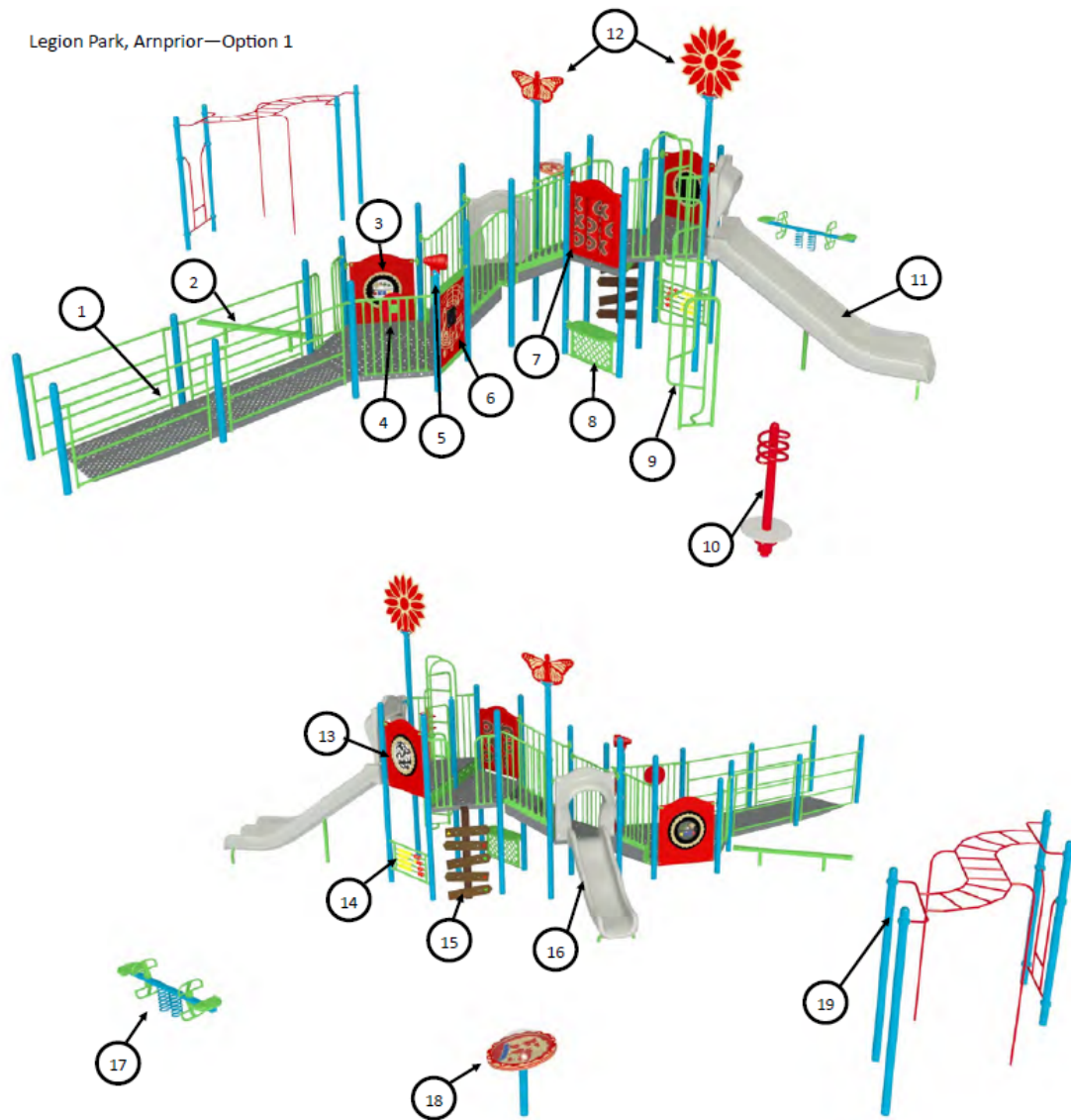


Legion Park Site Overview – Option 3



Legion Park - Option 3

Legion Park, Arnprior—Option 1



#	Component
1	Accessible Ramp
2	Balance Beam
3	Very Buried Treasures Globe Panel
4	Steering Wheel Panel
5	Telescope
6	Electronic Piano Panel
7	Tic Tac Toe Panel
8	Counter Panel
9	Accordion Climber
10	Stand N' Spin
11	Double Wide Slide
12	Flower and Butterfly Post Topper
13	Marble Maze Panel
14	Abacus Panel
15	Trail Climber
16	Single Wavy Slide
17	Twin Rider Teeter
18	SpinAtrium
19	Overhead Ladder with Step

Legion Park - Option 3

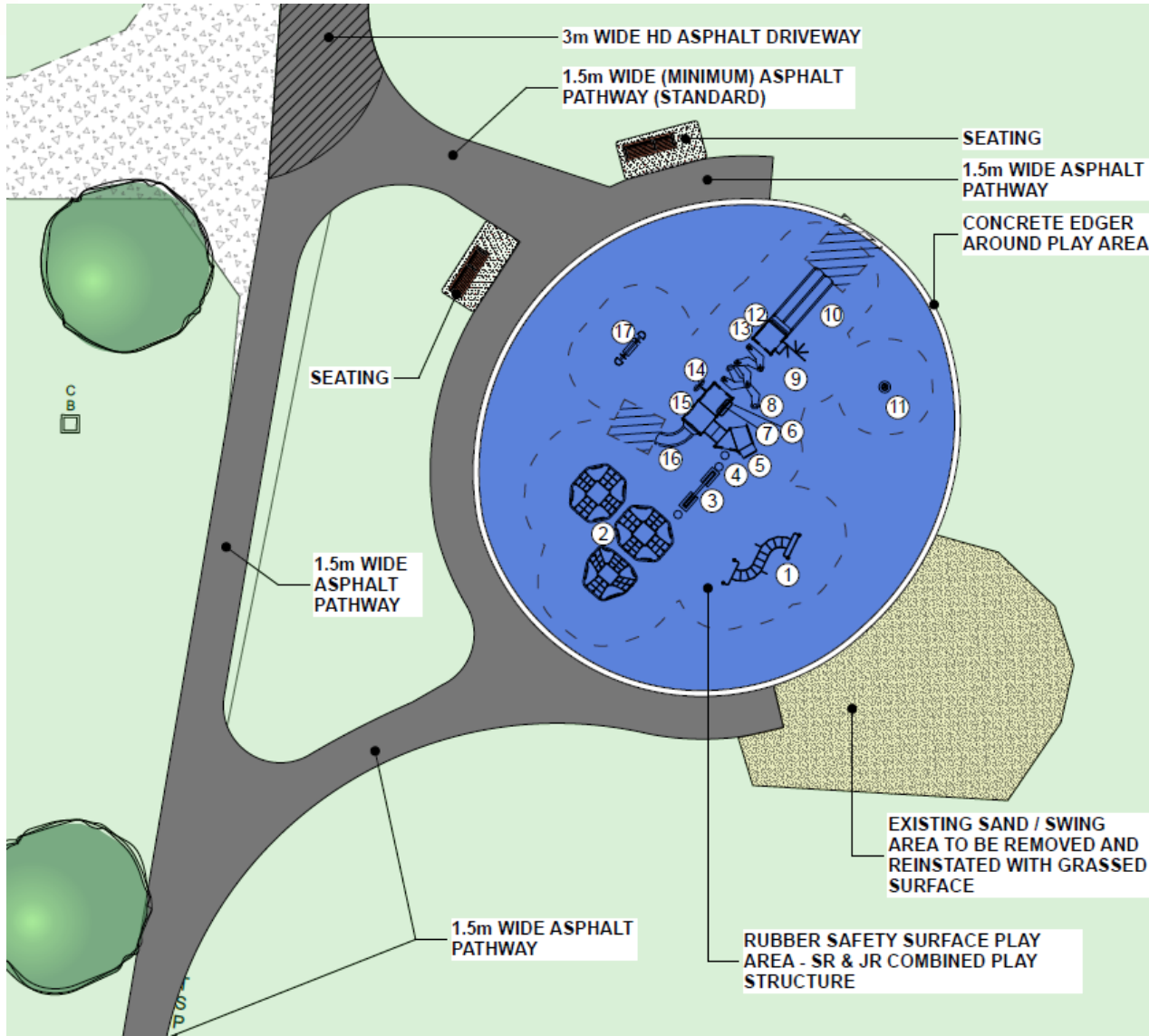


Legion Park - Option 3



Legion Park

Site Overview – Option 4

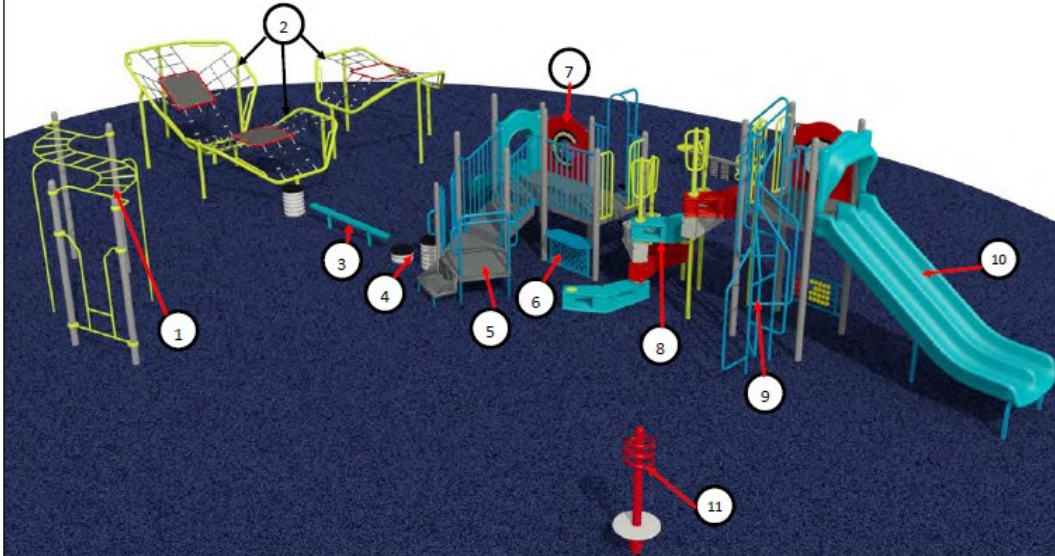




ARNPRIOR

Legion Park - Option 4

Legion Park, Arnprior—Option 2



#	Component
1	Overhead Ladder with Step
2	Hyperbolix Nets
3	Balance Beam
4	Culvert Climber
5	Transfer Station
6	Counter Panel
7	Steering Wheel Panel
8	Play Stax Bridge Climber
9	Spiral Climber
10	Double Wide Slide
11	Stand n' Spin
12	Slide n' Solve Panel
13	Abacus Panel
14	Pod Climber
15	Very Buried Treasures Globe
16	Curved Slide
17	Twin Rider Teeter



Legion Park - Option 4





Legion Park - Option 4

