

Central Park Water Main – Imperial Section



Building new infrastructure to ensure the continued delivery of clean, safe drinking water for the region's growing population

This notice contains important information that may affect you. Please ask someone to translate it for you.

Cet avis contient des renseignements importants qui pourraient vous concerner. Veuillez demander à quelqu'un de le traduire pour vous.

此通告包含可能影響閣下的重要資訊。請找人為您翻譯。

이 공지문은 귀하에게 영향을 미칠 수 있는 중요한 정보를 포함하고 있습니다. 이를 번역해 줄 수 있는 사람에게 의뢰하시기 바랍니다.

Thông báo này có chứa những thông tin quan trọng có thể ảnh hưởng đến quý vị. Vui lòng nhờ người phiên dịch hộ.

Este aviso contiene información importante que puede afectarle personalmente. Pídale a alguien que se lo traduzca.

ਇਸ ਨੋਟਿਸ ਵਿੱਚ ਮਹੱਤਵਪੂਰਨ ਜਾਣਕਾਰੀ ਹੈ ਜੋ ਤੁਹਾਨੂੰ ਪ੍ਰਭਾਵਤਿ ਕਰ ਸਕਦੀ ਹੈ। ਕਰਿਪਾ ਕਰਕੇ ਕਸਿ ਨੂੰ ਤੁਹਾਡੇ ਲਈ ਇਸ ਦਾ ਅਨਵਾਦ ਕਰਨ ਲਈ ਕਰੋ।

What Is This Project About?

Metro Vancouver is replacing the Central Park Water Main, which has been phased over several years and spans approximately 12 kilometres in the City of Burnaby and the City of New Westminster. The existing water main was built in the 1930s and is reaching the end of its service life. Once complete, the new water main will help ensure the continued delivery of clean, safe drinking water well into the future.

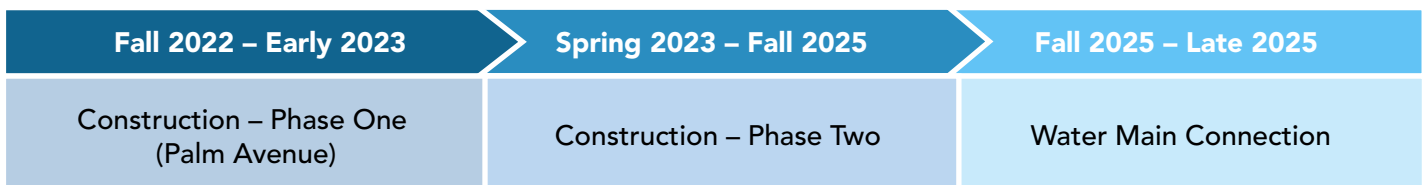
The Imperial Section of the Central Park Water Main is approximately 3.5 kilometres long and will be located along Imperial Street, between Maywood Street and Telford Avenue, and Griffiths Avenue and Elwell Street.

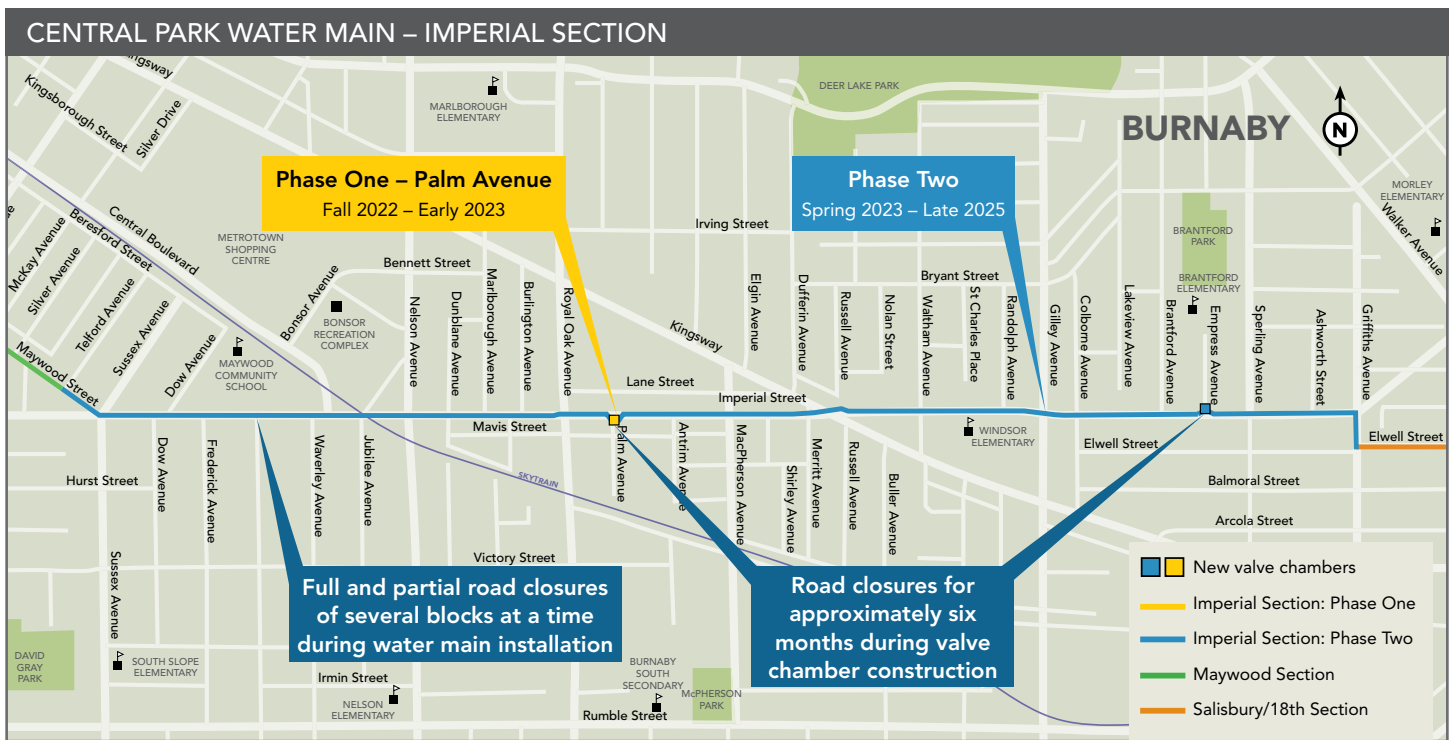
Please see map on the next page for location of water main and new valve chambers.

Construction of this section is expected to take place from fall 2022 to late 2025. Towards the end of the project, Metro Vancouver will return to connect the newly constructed water main to the existing drinking water system.

Two sections of the new water main are complete or underway: the Maywood Section was completed in fall 2020, and the Salisbury/18th Section will be completed in late 2022.

Project Timeline





What Will Happen During Construction?

The Central Park Water Main – Imperial Section will happen in two phases. Phase one will take place from fall 2022 to early 2023. Activities include:

- Relocating existing underground infrastructure to accommodate the new valve chamber
- Excavating a large pit to install a pre-cast valve chamber within a work zone that is approximately 15 metres by 20 metres in size

Phase two will take place from spring 2023 until fall 2025. Activities include:

- Establishing a 200-metre work zone, including temporary fencing to ensure safety, on a block-by-block basis
- Excavating an 18-metre-long and three-metre-wide trench to install a water main with a diameter of 1.2 metres
- Constructing a second large underground valve chamber at Empress Avenue
- Installing nearly two kilometres of new water, storm, and wastewater pipes on behalf of the City of Burnaby
- Removing and replacing the existing Central Park water main on Maywood Street and Griffiths Avenue. This process will take approximately three months at each location
- Cleaning and testing the water main after installation

Once construction is complete, our contractor will pave and restore the roadways impacted by this project to similar or better condition. At the end of the project, Metro Vancouver will connect the water main to the existing water distribution system.

Typical Hours of Work

All work will comply with City of Burnaby bylaws or granted bylaw variances. There may be times when crews will need to work longer hours or on weekends to complete certain tasks, in those cases we will notify you ahead of time if variances are granted. Typical hours of work for this project will be:

- **Monday to Friday:** 7:00 am – 8:00 pm
- **Saturdays:** 9:00 am – 8:00 pm
- No work on Sundays and holidays

How Will This Project Impact Me?

Metro Vancouver recognizes the construction of Central Park Water Main – Imperial Section may impact you and the local community. As part of our commitment to minimize project impacts, we have been working with the City of Burnaby, local residents, and businesses to identify impacts early in the process, and undertake measures to mitigate them.

Keeping People Moving Safely and Effectively

This essential water main project will have impacts on traffic and access throughout construction, including:

- Partial and full road closures on Imperial Avenue during water main installation
- Road closures of Palm Avenue and Empress Avenue during valve chamber construction for approximately six months

In order to reduce traffic impacts on the community, Metro Vancouver will:

- Implement a Traffic Management Plan to ensure pedestrians, cyclists, and drivers can safely move around the construction area
- Place traffic control signage on site and hire traffic control personnel
- Ensure emergency services will have access to properties and businesses at all times
- Notify residents and businesses of temporary driveway or parking lot closures and detour routes in advance

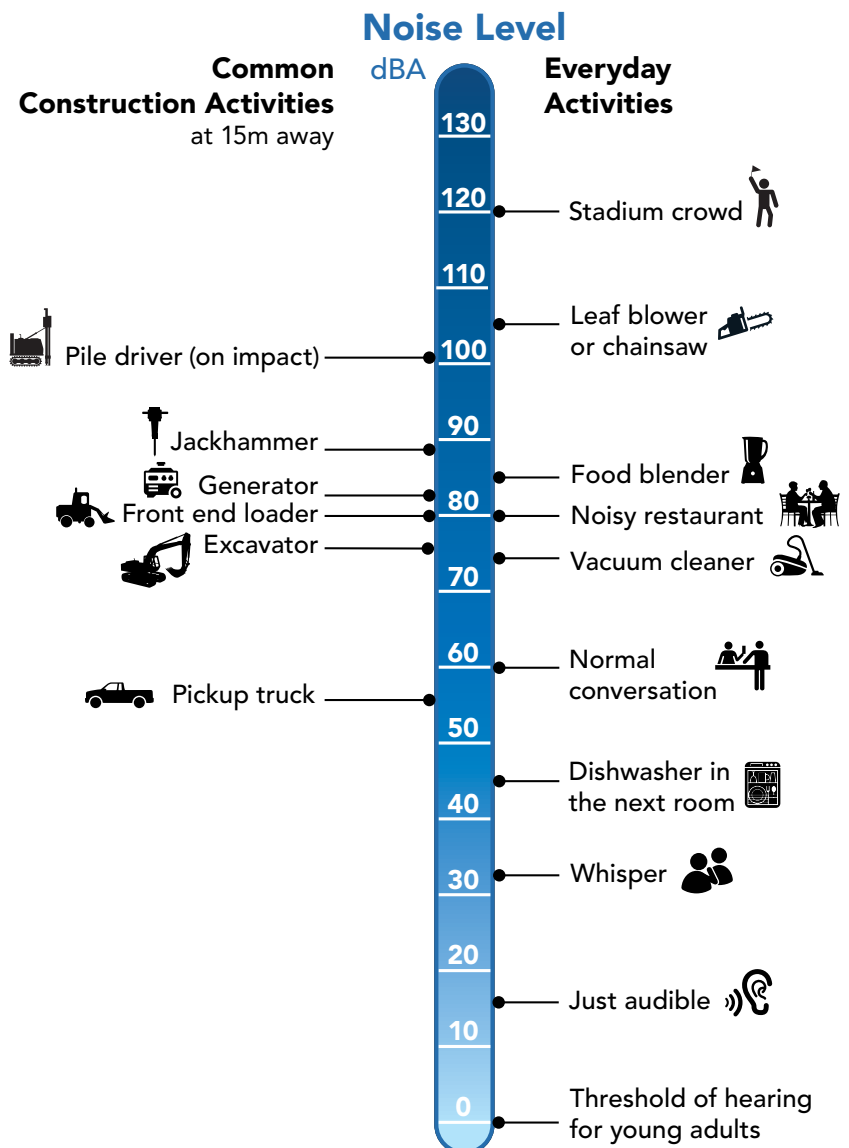
Managing Noise and Vibration

Metro Vancouver has developed a Noise and Vibration Management Strategy for the Central Park Water Main project that will be followed by our contractor throughout construction.

Saw cutters, excavators, and generators will be the main sources of noise on this project, and vibratory compactors and excavators will be the main source of vibration. Residents or businesses adjacent to work areas, approximately 15 metres away, may experience the noise produced by an excavator as the equivalent of the noise in a busy restaurant.

Crews will attempt to reduce noise and vibration impacts where possible by:

- Scheduling work with our noisiest and high-vibration equipment, such as hydro vacuum trucks, to take place after 8:00 am and before 6:00 pm
- Minimizing “nuisance noise” such as offloading equipment, operating back-up beepers, or warming up heavy equipment unnecessarily and outside allowable hours
- Covering noisy equipment

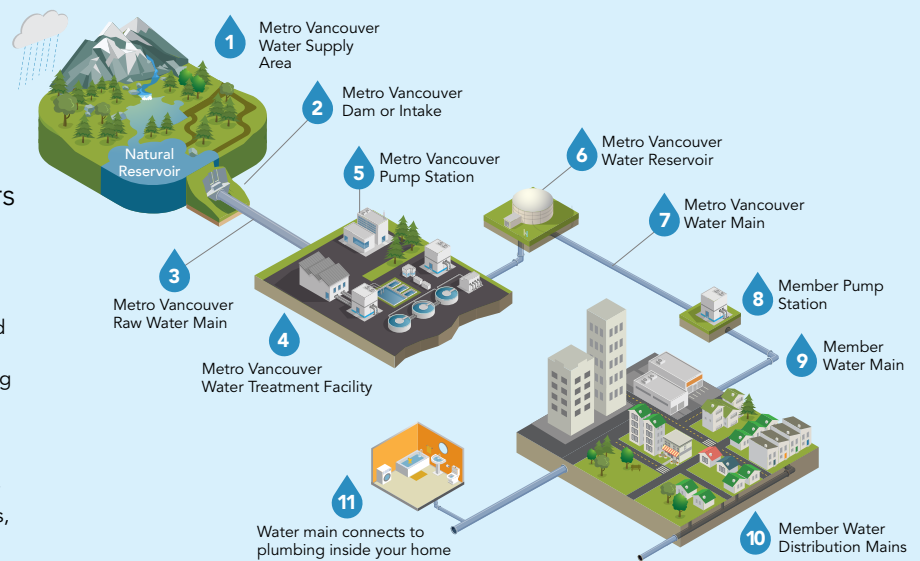


How does water get to your home?

Metro Vancouver and its members work together to supply clean, safe drinking water to the region.

Metro Vancouver is responsible for protecting and providing the region's water supply, including: protecting our water supply areas, storing, treating and ensuring the quality of our water, supplying water directly to our members, and planning for future supply and demand.

Our members are responsible for providing water to residents and businesses, enforcing regulations, utility billing, and where used, water metering.



Working with the Community

Metro Vancouver is committed to working closely with the community and the City of Burnaby to ensure concerns and interests are considered as the project continues.

Local residents and businesses will receive ongoing notification through newsletters, web updates, email, and on-site signage. You can subscribe to our mailing list to receive regular updates via email by clicking on the "sign up" button located on the project's webpage.

A community liaison is also available to answer questions and listen to concerns throughout the project.

Maintaining Access for Local Residents and Businesses

We will maintain access to homes and businesses whenever possible; however, construction may temporarily restrict access to residential and business driveways and parking areas.

If anyone in your home has mobility restrictions or any other concerns, please contact the project's community liaison at 604-432-6200 to discuss alternate options for parking and access, and to explore possible solutions to mitigate impacts.



Contact Us

Community Liaison: 604-432-6200
(Monday to Friday from 8:00 am to 4:30 pm)

After Hours Emergency: 604-451-6610

Email: icentre@metrovancover.org (Please include "Central Park Water Main – Imperial Section" in the subject line)

Website: metrovancover.org (Search "Central Park Water Main – Imperial Section")

metrovancover
Together we make our region strong