

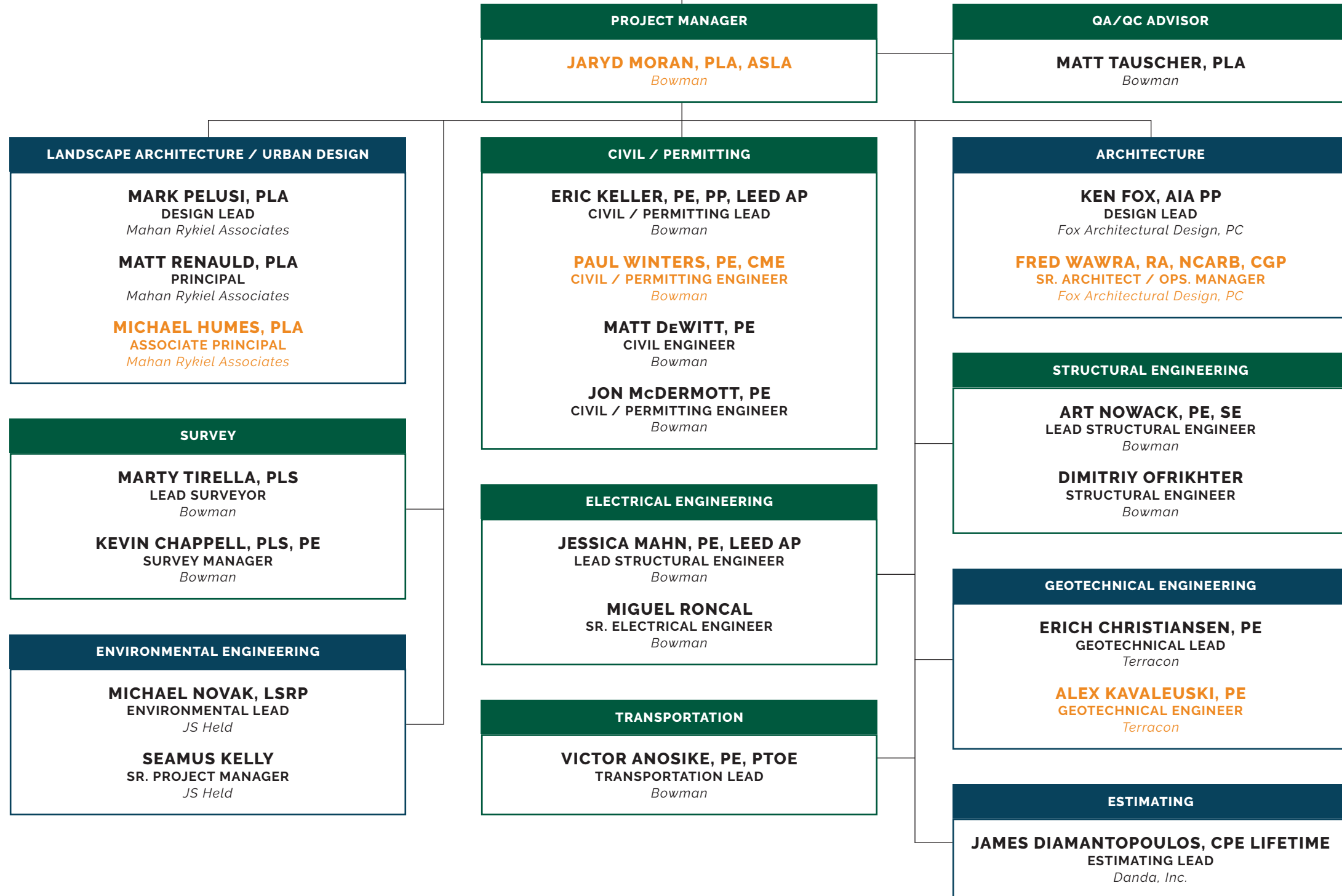


PRINCETON

COMMUNITY PARK SOUTH

STAKEHOLDER MEETING
06/23/2025

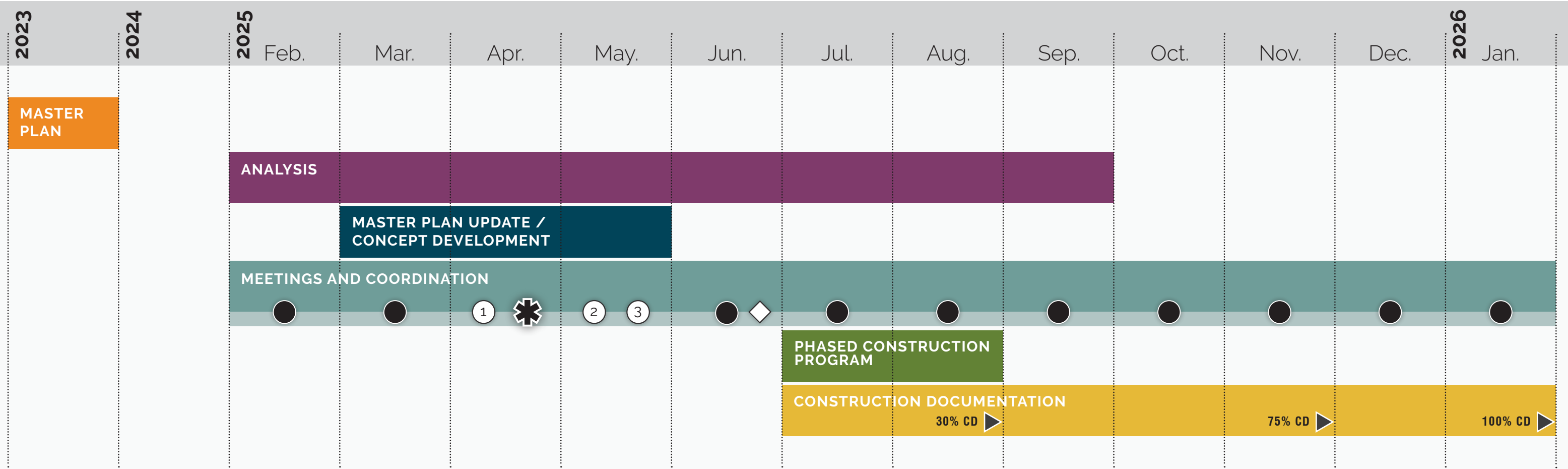
PROJECT TEAM



- Bowman
- Subconsultants
- Primary Contacts

PROJECT TIMELINE

WE ARE HERE!



Client/Steering Committee Meeting
 Presentation
 Community Meeting
 Design Charrette
 Deliverable

CURRENT MASTER PLAN



- NOTES:**
1. ALL ATHLETIC FIELDS, COURTS, AND WALKWAYS HAVE OPTION TO BE ILLUMINATED WITH NEW LED LIGHTING.
 2. PERIMETER PATH LIGHTING AND PARKING LOTS HAVE DUSK TO DAWN LIGHTING, LED LIGHTING WITH TIMER OFF OPTION THIS DRAWING IS FOR CONCEPTUAL MASTER PLAN DEVELOPMENT PURPOSES ONLY.
 3. ALL PROPOSED SITE LANDSCAPE PLANT MATERIALS SHALL BE SELECTED AND LOCATED BY THE PROJECT LANDSCAPE ARCHITECT.
 4. THE POTENTIAL FOR NATURAL GRASS OR SYNTHETIC TURF ATHLETIC FIELDS IS NOT REFLECTED ON THIS PLAN. COLOR SHOWN ARE TO DISTINGUISH THE POTENTIAL LOCATIONS OF FIELDS ONLY.

PROPOSED CONCEPT PLAN



- KEY:**
- A New Full Size Tennis Courts
 - B Soccer Field
 - C Flexible Use Field Area (Youth Soccer)
 - D Exercise/Fitness Area
 - E Volleyball
 - F Baseball/Softball Fields
 - G Pickleball Courts
 - H Tennis Practice Wall
 - I Platform Tennis
 - J Playground
 - K Small Dog Park Space
 - L Large Dog Park Space
 - M Flexible Use Lawn
 - N Pavilion
 - O Shade Structure
 - P Mist/Cooling Station
 - Q Maintenance Buildings
 - R Expanded Parking
 - S Restrooms / Shade / Storage
 - T Restroom/Concession Pavilion
 - U Plaza
 - V Walkway/Trail Network
 - W Walkway Connection to Parking
 - X Raingarden
 - Y Maintenance Access Drive
 - Z Batting Cage

DISCUSSION / Q&A



THANK YOU!