



An unprecedented educational movement in Buellton

SYV Waldorf, dba Hundred Hills School, is a not-for-profit educational institution, 501(c)(3) tax-exempt organization



Notable Waldorf Alumni



Uma Therman
American-born actress and
activist

Notable
Waldorf
alumni



**HUNDRED
HILLS SCHOOL**
ROOTED IN WALDORF



Thomas C. Südhof
2013 Nobel Prize winner in
Medicine, Biochemist, and
Professor at Stanford University

Notable
Waldorf
alumni



**HUNDRED
HILLS SCHOOL**
ROOTED IN WALDORF



Jens Stoltenberg
Former prime minister of
Norway and Secretary
General of NATO

Notable
Waldorf
alumni



**HUNDRED
HILLS SCHOOL**
ROOTED IN WALDORF

Notable Waldorf Alumni (Cont'd)



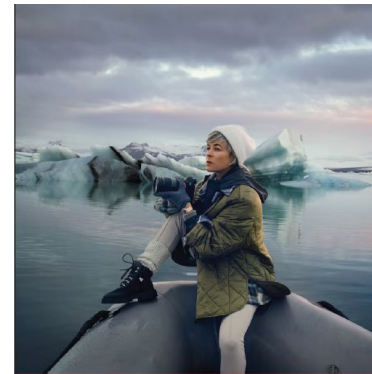
Ken Chenault
Harvard Law School, former
CEO of American Express,
Chairman of General Catalyst

Notable
Waldorf
alumni



Ferdinand Alexander Porsche
German-born designer of the
first Porsche 911

Notable
Waldorf
alumni

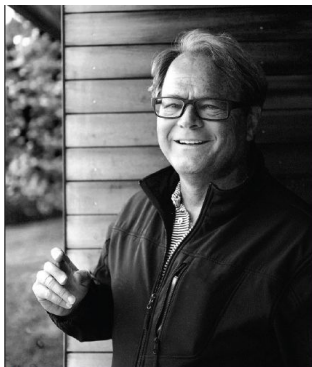


Zaria Forman
Fine artist documenting
climate change with
pastel drawings. She has
flown with NASA,
delivered a [TEDTalk](#), and
presented at Amazon
and Google.

Notable
Waldorf
alumni



Notable Waldorf Alumni (Cont'd)



Charles Rose
Innovative architect
(Princeton and Harvard)

Notable
Waldorf
alumni



Aleah Chapman
Visual artist, first American
female winner of the London
National Portrait Gallery's BP
Portrait Award

Notable
Waldorf
alumni

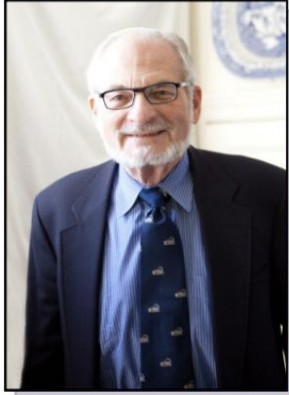


Georgina Evers-Swindell
Two-time Olympic gold
medalist in rowing, World
Record setter

Notable
Waldorf
alumni

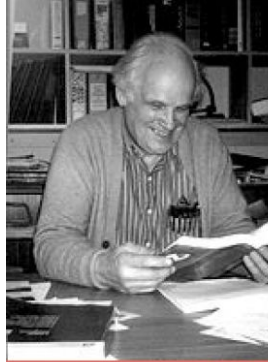


Notable Waldorf Alumni (Cont'd)



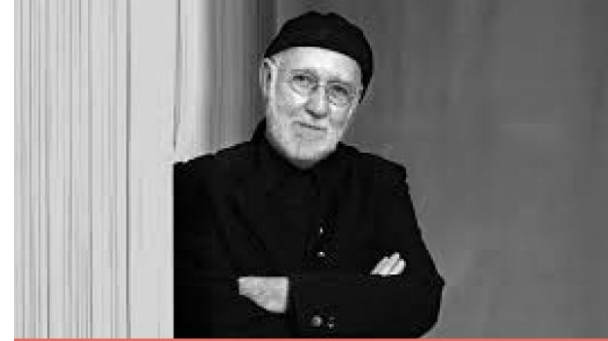
John Fitzallen Moore
Ph.D. in Physics, holder of over 20 patents, Founder of Bio-Imaging Research, which manufactured the world's first one-second CT scanner. (MIT, Harvard, Columbia, National Science Foundation Fellowship)

Notable
Waldorf
alumni



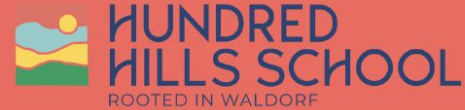
David Blackmer
(U.S. Navy, Harvard and MIT)
Engineer, researcher, and inventor of the DBX noise reduction system

Notable
Waldorf
alumni



Albert Watson
Photographer with notable work including 200 Vogue covers and 40 Rolling Stone covers

Notable
Waldorf
alumni



Project Description

Project Type	<ul style="list-style-type: none"> - Construct the first campus of a distributed PS-8 nonprofit Waldorf school - Upper portion of the Willemsen property - APNs: 099-660-032 + 099-660-033 + 099-660-034 = 0.68 acres - School website here - School Instagram page here
First Campus (6 round structures)	<ul style="list-style-type: none"> - 5 standalone classrooms, ring fenced - Parent-Child (“PC”, 9-36 months old), PS, Kinder, 1st, 2nd, and 3rd - PC is not a full-time program; schedule aligns with preschoolers’ outdoor education - 1 standalone bathroom with separate entrances and stalls for Boys & Girls, ring fenced - Up to all codes, including ADA and urinal
Pedagogy / Educational Philosophy	<ul style="list-style-type: none"> - Three inextricably linked and equally weighted core tenets: <ul style="list-style-type: none"> - Developmentally/age appropriate - Experiential - Academically rigorous - Curriculum, by subject by grade, available here - Designed to foster unique creators, thinkers, and innovators
Founders & Donors	<ul style="list-style-type: none"> - The Chanana Family
Project Funding Status	<ul style="list-style-type: none"> - Fully funded with cash on hand
First Day of School	<ul style="list-style-type: none"> - September 2, 2025
Educators	<ul style="list-style-type: none"> - See bios here

Project Description

Classrooms	<ul style="list-style-type: none"> - 5 round structures - New, intentionally designed, purpose built, and prefab - Round is ideal for learning, doubly especially in the early years - Unit specs: single story, rigid wall, 24' diameter, 452 sq. ft., 88" wall height, 13' center ring height, metal roof upgrade, four glass double pane windows upgrade, bamboo flooring upgrade
Bathroom	<ul style="list-style-type: none"> - 1 round structure - New, intentionally designed, purpose built, and prefab - Up to all codes, including ADA and urinal - Separate entrances and stalls for Boys & Girls - Unit spec: Single story, rigid wall, 24' diameter, 452 sq. ft., 88" wall height, 13' center ring height
Hours of Operation	<ul style="list-style-type: none"> - Monday through Friday - Campus open from 7:30am PT to 4:00pm PT on weekdays - Classes in session from 8:30am PT to 3:00pm PT on weekdays
After Hours Events	<ul style="list-style-type: none"> - Up to 7 Waldorf Festivals (see list on last slide 10) during a 9 month academic year
Drop-Off / Pick-Up Times	<ul style="list-style-type: none"> - 8:30 - 9:00 AM / 3:00 - 4:00 PM (to accommodate working parents) - Deliberately staggered drop-offs and pick-ups for traffic mitigation - Virtually zero overlap with Library's open and close times
Drop-Off / Pick-Up Location	<ul style="list-style-type: none"> - Lower portion of Willemsen property designated for new public parking lot - Codified in school policy - Strictly enforced with escalating penalties - School staff will greet parents and students for pick-up and drop-off

Project Description

Parking for Faculty, Staff, Contractors, & Visitors	<ul style="list-style-type: none"> - Lower portion of Willemsen property earmarked for new public parking lot - Codified in school policy - Strictly enforced with escalating penalties
Access	<ul style="list-style-type: none"> - From River View Park via Sycamore Drive - Codified in school policy - Students coming from Buellton, Solvang, Santa Ynez, and Los Olivos
“Last Mile” to Campus	<p>Four options:</p> <ol style="list-style-type: none"> 1. Hike up hill 2. Walk up steps (part of future parking lot) 3. Walk around horse stables 4. Shuttle around horse stables in school-owned LSV (e.g., GEM e6)
Bike Parking	<ul style="list-style-type: none"> - None
Students per Classroom	<ul style="list-style-type: none"> - 6-10 for a total student body size of 30-50 at its peak - Assumes lease term can accommodate 5 academic years - At 54 months starting in September 2025, lease expires in March 2030, which falls in the middle of an academic year that ends in June
Staff per Classroom	<ul style="list-style-type: none"> - 1 to 2
Facilities Management	<ul style="list-style-type: none"> - Classrooms: Yes but frequency TBD - Bathroom: Yes but frequency TBD - Groundskeeping: Yes but frequency TBD

Project Description

Cafeteria	<p>None, but:</p> <ul style="list-style-type: none"> - 2 of the 5 classrooms will include an electric range, at times utilized for daily snacks - Common mid morning / 10:00 AM PT snacks include but are not limited to: <ul style="list-style-type: none"> - Organic brown rice with seaweed - Organic soup - Organic sourdough bread - Organic hummus with organic raw vegetables - Supplies will be delivered in a passenger vehicle to Drop-Off / Pick-Up Location <ul style="list-style-type: none"> - “Last mile” to campus handled via LSV and / or collapsible folding wagon
Trash / MarBorg Service	<p>School’s trash service mimics Library’s:</p> <ul style="list-style-type: none"> - Pick up once a week / Fridays on existing route and site - One 95 gallon trash - One 95 gallon recycling
Trees to remove	<ul style="list-style-type: none"> - None
Buildings to remove	<ul style="list-style-type: none"> - None
Hazardous substances proposed for use, storage, or transport	<ul style="list-style-type: none"> - None
Facilities and processes that generate substantial odors	<ul style="list-style-type: none"> - None

Project Description

<p>Waldorf Festivals</p>	<ol style="list-style-type: none"> 1. Michaelmas 2. May Faire 3. Lantern Walk 4. St Nicholas 5. St Lucia 6. Winter faire 7. Spiral of light <p>Typical scope & scale of Festivals:</p> <ul style="list-style-type: none"> - Attendees: Student plus both parents - Start time: After school / 4:00 PM - Duration: 1-2 hrs - Onsite cooking: No - Onsite PA system: No - Onsite music: No
<p>Student Body Population</p>	<p>Min: 30 Max: 50</p>
<p>Inbound Students</p>	<ul style="list-style-type: none"> - Buellton - Solvang - Santa Ynez - Los Olivos

Project Description

Space created underneath classrooms by raised foundations	<ul style="list-style-type: none">- Very little will remain after construction, see plans- What remains, we will mow- If above is inadequate, happy to add lattice skirting
Party responsible for maintaining entire fenced area	<ul style="list-style-type: none">- Solely and exclusively Hundred Hills School