

INFORMATIONAL MEETING

BR-25-F1



AGENDA

- Staff Introduction
- Project Overview
 - Location
 - Description
 - Timing/Duration
 - Phasing
 - Details
 - Cost and Funding
- Special Assessments
- Questions

STAFF INTRODUCTION

City of Fargo

- Rick Larson– Project Manager
- Doug Durgin – Special Assessment Coordinator
- Tom Knakmuhs – City Engineer
- Nathan Boerboom – Assistant City Engineer
- Jason Leonard – Division Engineer

PROJECT LOCATION



- NP Ave N from 170' E of 8th St N to Broadway

PROJECT DESCRIPTION

- Full roadway reconstruction including:
 - Water Main
 - Water Services (to curb stop valve)
 - Sanitary Sewer Main and Services (to behind the curb)
 - Replace and Upsize Storm Sewer Main, Inlets and leads
 - New Concrete Pavement
 - Driveway Approaches (up to sidewalk)
 - Sidewalk Replacement
 - Street Lights

PROJECT TIMING AND DURATION

Bid Date:

- February 12th, 2025

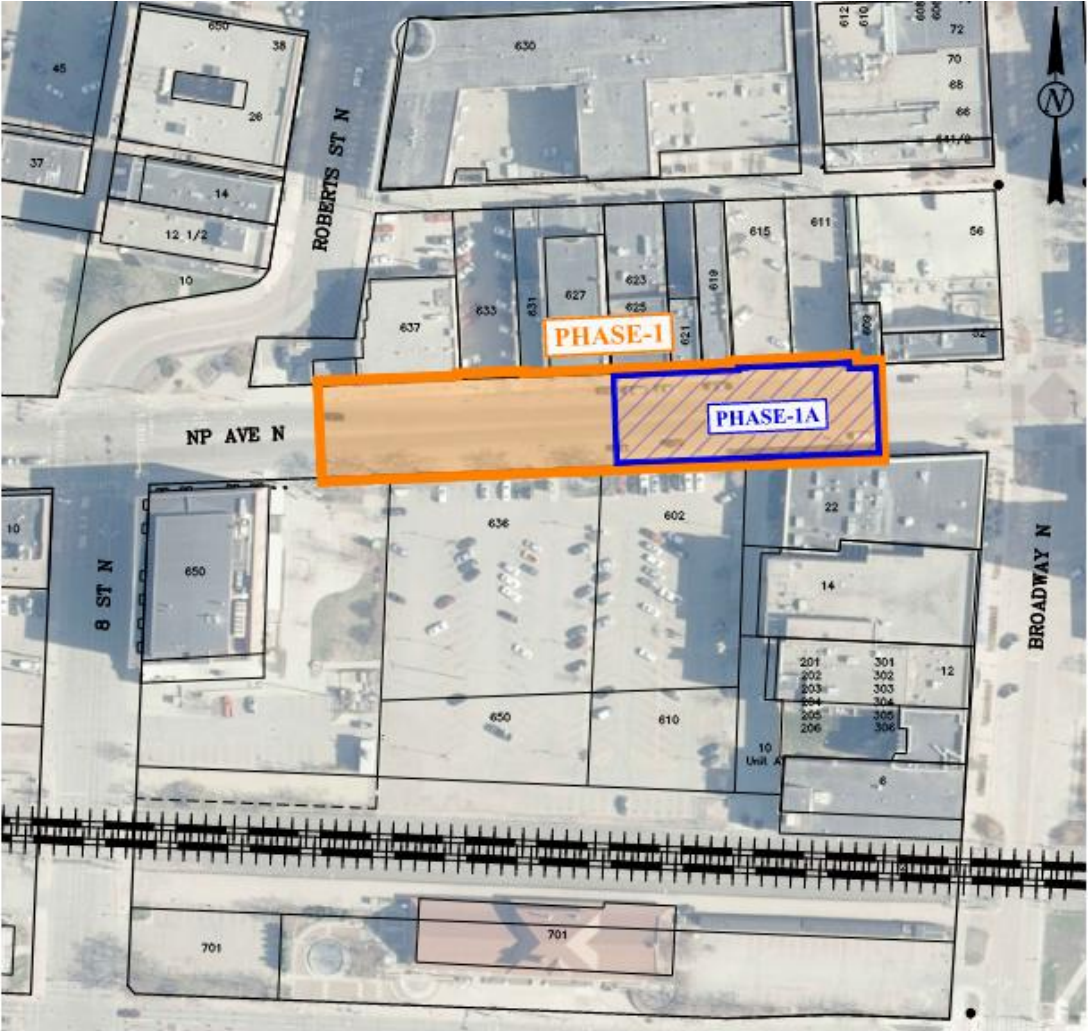
Start Date:

- To Be Determined, but likely early summer, 2025

Completion Date:

- Fall 2025
- Phases will need to run concurrently to finish the project on time

PROJECT PHASING



Phase	Duration (Days)
1	90
1A	60

PROJECT DETAILS

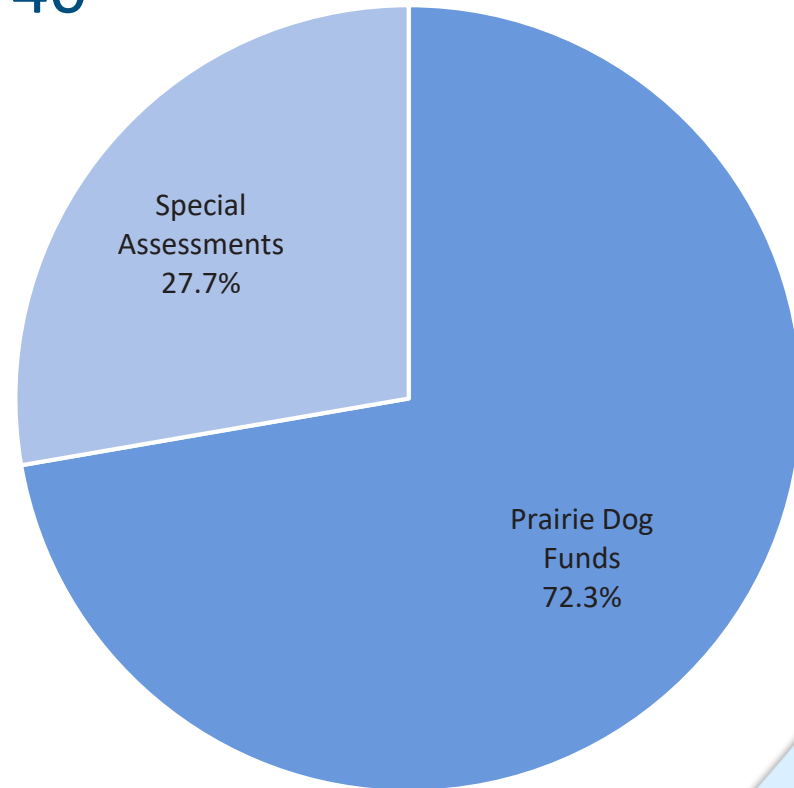
- There is a pedestrian access plan to maintain pedestrian access to buildings within the work zone at all times.
- Temporary water service lines will be installed above ground to maintain water service while the main is being replaced.
- Driveways may be widened (if it complies with City Ordinance)
 - Forms are available
- Bike lanes will be incorporated into the new paving on NP Ave.
- Landscape areas will be have plants installed in 2025.

PROJECT COST

- Estimated Cost of Construction: \$2,244,238
- Fees and Contingency:
 - 10% Engineering Fee
 - 4% Admin Fee
 - 3% Legal Fee
 - 4% Interest Fee
 - 5% Contingency
- Cost with Fees and Contingency: \$2,827,740

PROJECT FUNDING

- Cost with Fees and Contingency: \$2,827,740
- Funding breakdown:
 - Prairie Dog Funds: \$2,044,011
 - Special Assessments: \$783,729



■ Prairie Dog Funds ■ Special Assessments

SPECIAL ASSESSMENTS

- Water Main (including Water Service) Replacement
 - Capped at \$66.24 per front foot for most properties
- Sanitary Sewer Main (including Sewer Service) Replacement
 - Sewer Main Capped at \$66.24 per front foot for most properties
 - No Assessment for new sewer services
- Storm Sewer
 - 50% Special Assessed
- Street Amenities
 - 100% Special Assessed

SPECIAL ASSESSMENTS – PAVING

Category	<u>Local Direct</u> Cost per Front Foot
Single Family	\$93.84
MR Tier 1 (1 to 3 units)	NA
MR Tier 2 (4 to 12 units)	NA
MR Tier 3 (13 to 36 units)	NA
Commercial	NA
Downtown Mixed Use	\$386.43

QUESTIONS?

- Project Questions:
 - Rick Larson– Project Manager
 - Rlarson@fargond.gov
 - 701-476-6634 (office)
- Special Assessment Questions:
 - Doug Durgin – Special Assessment Coordinator
 - Ddurgin@fargond.gov
 - 701-476-6718 (office)