

South Shuswap Destination Trail Planning Project 2022

UPDATED: May 30, 2022



Community Input Session

- Introductions
- Overview Presentation
- Discussion:
 - Concepts & Enhancements
 - Management Challenges
 - Amenities, Infrastructure, Services
- Next Steps



Every trail tells a story. . .

Every trail tells a **story of relationships**.

The South Shuswap has been a regional leader in creating a sustainable network of recreational trails for public use. This is an opportunity for you to guide what the area's trail story might look like growing together into the future.

Here is the framework for this story. . .



A hiker wearing a tan hat and a light-colored long-sleeved shirt is sitting on a rocky ridge. A yellow and black backpack is on the ground next to them. The hiker is looking out over a vast landscape that includes a large lake, rolling green hills, and distant mountains under a cloudy sky. Several tall evergreen trees are in the foreground.

Weytkp
(Hello to many)

You are in **Secwépemc Territory**...

Secwépemcúíecw

Secwepemc Territory

1. The South Shuswap is within the **unceded** Lakes region of Secwépemcúíecw (territory) of the Secwépemc people
2. Adams Lake, Little Shuswap Lake, Neskonlith, and Splantsin **share responsibility** as **Yucwmenlúcwu** (caretakers) of the area – **Pespesllkwe** te Secwépemc
3. This includes **rights and title** in the area including rights to land, water and ecology of the territory
4. The United Nations Declaration on the Rights of Indigenous Peoples (UNDRIP) affirms the **right to determine and develop priorities and strategies** for the development or use of the territorial lands and resources

A group of people is gathered outdoors in a forest setting. They are looking towards a lake in the distance. The scene is bright and sunny, with lush green trees and foliage. The people are dressed in casual outdoor attire, including hats and jackets. The overall atmosphere is one of a community meeting or workshop.

The Shuswap Trail Protocol

...Working Together in a spirit of respect,
cooperation, and stewardship

Shuswap Regional Trail Strategy and Roundtable: Shared Values

The **purpose** of the strategy is to protect, enhance and recognize trails as an integral part of the Shuswap lifestyle, culture and economy.

- ensure trails are appropriately **authorized, mapped, developed, maintained, and promoted,**
- protect and promote **Secwépemc Nation interests,**
- reduce/repair **ecological** damage from all trail use,
- manage **land access** appropriately
- demonstrate **collaborative** management
- provide **stability** and **security** to all who invest in them.

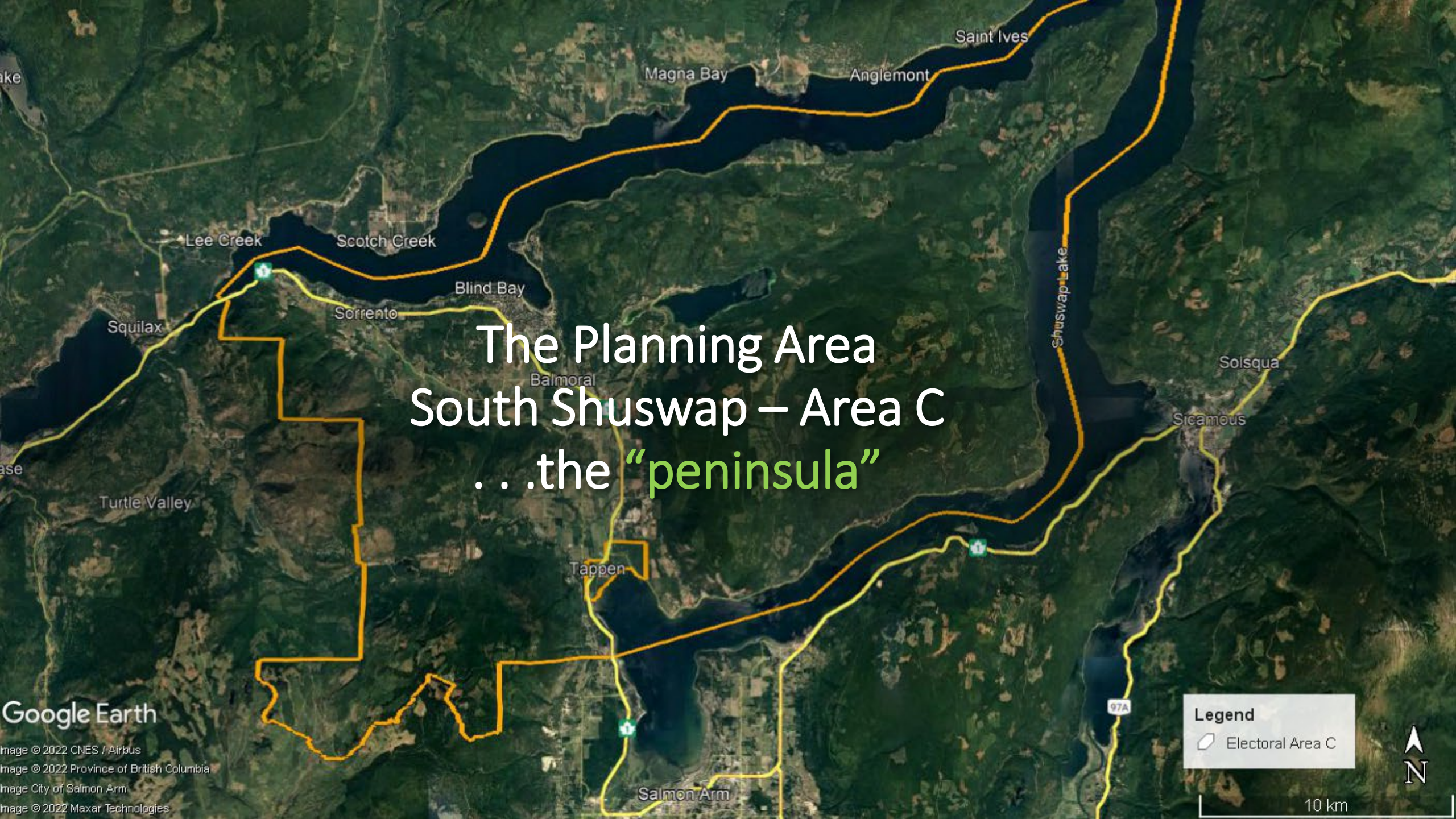
See: [Shuswap Regional Trails Roundtable](#)





Y'icwetsutce

- Working together to take care of the land



The Planning Area
South Shuswap – Area C
...the “peninsula”

Google Earth

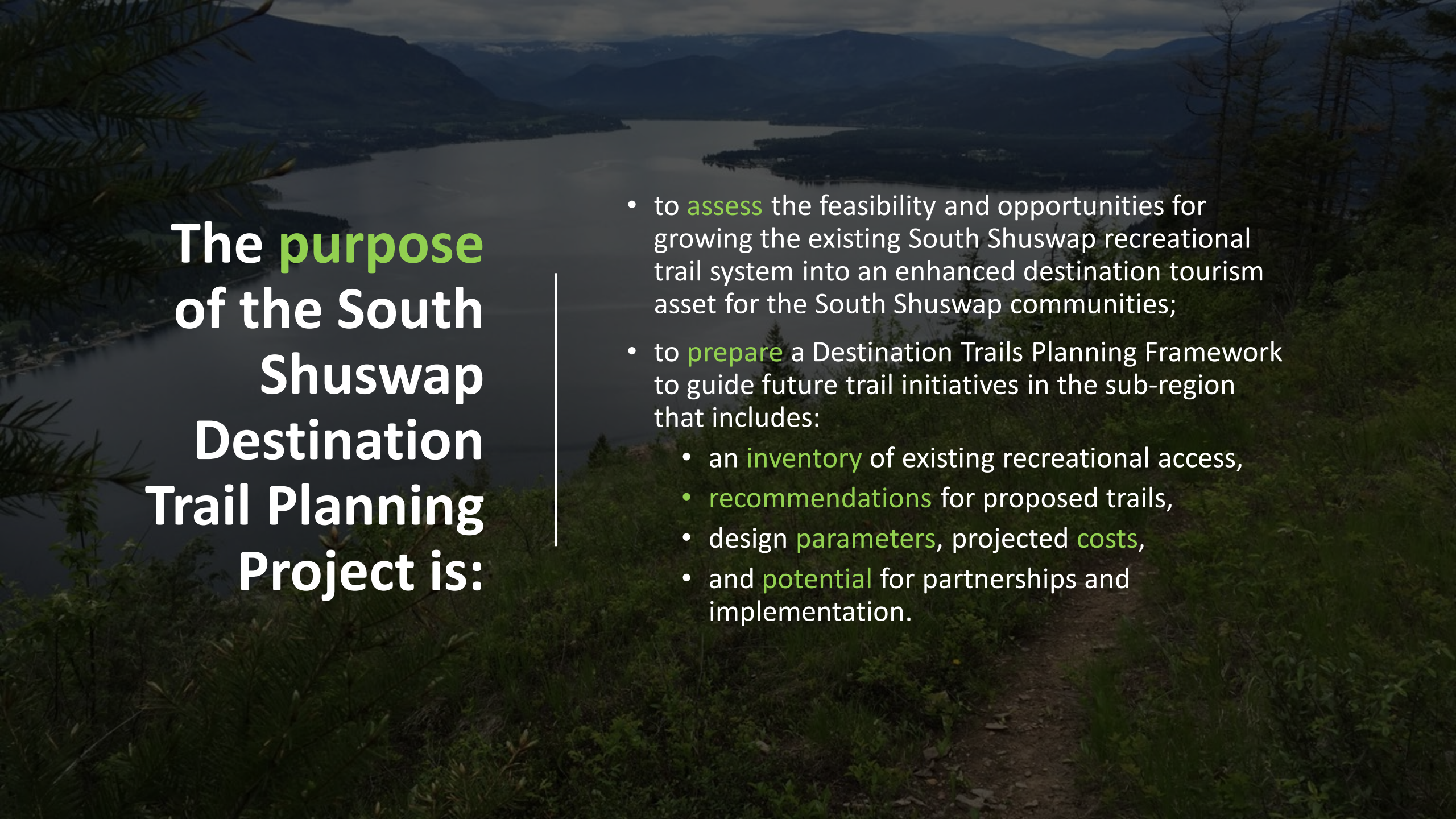
Image © 2022 CNES / Airbus
Image © 2022 Province of British Columbia
Image City of Salmon Arm
Image © 2022 Maxar Technologies

Legend

- Electoral Area C



10 km



The **purpose** of the South Shuswap Destination Trail Planning Project is:

- to **assess** the feasibility and opportunities for growing the existing South Shuswap recreational trail system into an enhanced destination tourism asset for the South Shuswap communities;
- to **prepare** a Destination Trails Planning Framework to guide future trail initiatives in the sub-region that includes:
 - an **inventory** of existing recreational access,
 - **recommendations** for proposed trails,
 - design **parameters**, projected **costs**,
 - and **potential** for partnerships and implementation.



Destination Trails are...

- trails, trail systems, trail-based experiences, and associated infrastructure and amenities. . .
- that **connect to and compliment** local communities, culture, and environments. . .
- But also invite, welcome, and attract visitors.



The **trail planning** project will. . .

- Build on the South Shuswap (CSRD Area C) Parks and Trails Master Plan, Shuswap Regional Trails Strategy, Shuswap Tourism Strategy, and Secwepemc **planning to date**

*Meetings with Secwepemc leadership indicated that future trail planning **needs to take into consideration sacred areas**, including the location of traditional medicinal plants.*

*The Parks and Trails Master Plan also acknowledged implementation of future trails requires further **study to understand environmental impacts**.*

*Social **impacts on local communities** are also an important consideration.*

Desired Outcome. . .

- a **reference framework** which will guide future trail planning in the South Shuswap
- an **assessment of the resources needed** to implement priorities
- . . .including an assessment of the **potential for enhanced overnight** point-to-point community and semi-wilderness accommodation points

*Implementation of the strategy is outside the scope of this project, however, and will rely on the **collaborative efforts of community partners** willing to assume responsibility as lead proponents and champions going forward.*

A scenic landscape featuring a calm lake in the middle ground, surrounded by dense evergreen forests. In the background, rolling mountains are visible under a clear sky with a few wispy clouds. The foreground shows some dry, brownish vegetation and a few trees.

The Research to date. . .

- Environmental Screening
- Secwépemc First Nations values & interests
- Destination development & tourism – Situation Analysis (2018)
- Leadership consultation
- Field inventory and mapping



Project Schedule. . .

- Project Initiation – February 2022
- Secwepemc, Provincial, Regional leadership consultations – March – April 2022
- Community Consultations – May - July 2022
- Draft and Final Report – July - Sept 2022

Plunging a little **more deeply**. . .

. . .**what we have heard** to date

A photograph of three people standing in a forest, looking at a wooden trailhead post. The post has several informational signs and a red paw print painted on it. One person is pointing at the post. The background is filled with green trees.

Secwépemc Values...

- Shuswap Lakes Secwepemc – Adams Lake, Neskonlith, Little Shuswap Lake, Splatsin (Pespesllkwe Campfire)
- Working together
- Duty to Consult/Shared Decision Making ([UNDRIP, Truth & Reconciliation – Calls to Action](#))
- Cultural Heritage PAST & PRESENT - Food Procurement, Ceremonial/Spiritual/Sacred, Trails, Habitation, Pictographs, Placenames, Stories
- Archaeological Resources (protected under Heritage Conservation Act)
- Shuswap Regional Trails Strategy – [Shuswap Trail Protocol](#) – acknowledge Title & Rights, protect, and promote Secwépemc values and interests
- Secwépemc Landmarks and Trailhead Post [Project](#)
- Knowledge Keepers and Elders circle - protocol



Environmental Values

- Eco-system Health
- Watersheds, Shorelines, and Riparian Areas
- Diverse & Sensitive Habitats
- Species at Risk, Fisheries, Species Diversity
- Invasive Species
- Climate Change
- Wildfire and Flood Risk
- Erosion and Run-off



Community Values

- Social Health
- Cultural Integrity
- Economic Resilience
- Recreational Opportunities
- Visitor Opportunities & Capacity Limits
- Dependence on land & water
- Young people & young families
- Seniors and people with mobility limitations
- Concern re potential negative impacts
- Reconciliation with Secwépemc values

**Must ask. . .
(based on the
values we have
committed to)**

- What will the **effect** of a trail development like this be on habitat, species, water, climate change pressure, Secwépemc First Nations values and interests, other industries like forestry, local tourism, local economy, socially?
- What **changes** would be acceptable?
- What would be the **limits** of acceptable change?
(environment, First Nations, socially, economically)

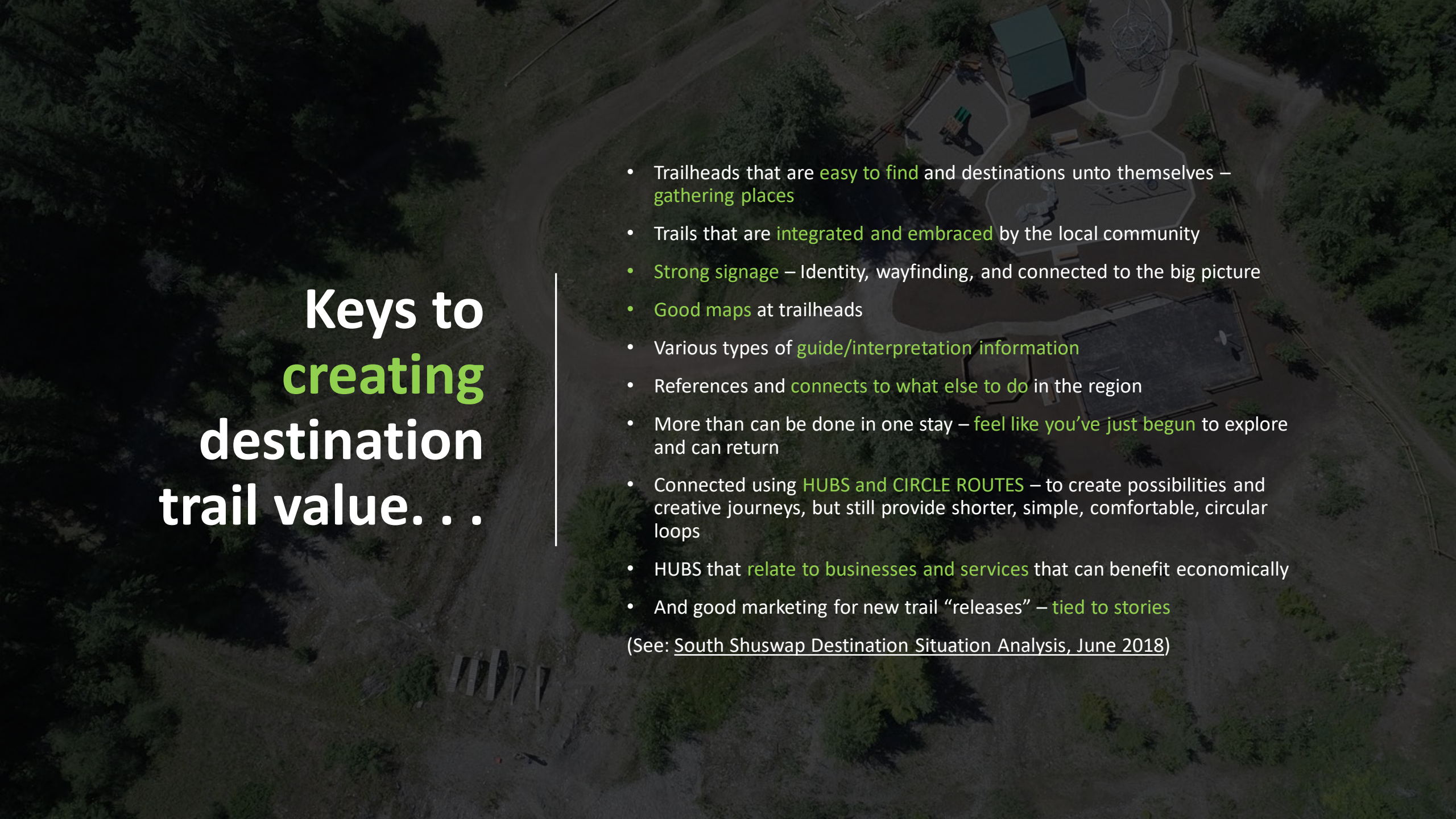
A scenic landscape featuring a valley with a small town, rolling hills, and mountains in the distance under a cloudy sky. The foreground is a grassy slope.

Tourism: Situation Analysis. . .

“In successful visitor destinations the natural landscape begins to merge with the human landscape in a complementary way.”

(South Shuswap Destination Trail System: [Situation Analysis, June 2018](#))

- Reveal **authentic local stories** and **connect communities**, amenities, and businesses with a well-planned trail system
- Affirms the value of **hub-and-spokes** trailhead centers,
- Highlighted connectivity between **land and water**,
- Understand and build on **existing strengths**,
- Continue to **work with Secwépemc leadership** to enhance First Nations identity and presence in the land

An aerial photograph of a trailhead area, showing a paved path leading to a cluster of buildings, including a large white structure and a smaller green-roofed building. The area is surrounded by trees and a parking lot with several vehicles. The image is darkened to serve as a background for the text.

Keys to creating destination trail value...

- Trailheads that are **easy to find** and destinations unto themselves – **gathering places**
- Trails that are **integrated and embraced** by the local community
- **Strong signage** – Identity, wayfinding, and connected to the big picture
- **Good maps** at trailheads
- Various types of **guide/interpretation information**
- References and **connects to what else to do** in the region
- More than can be done in one stay – **feel like you've just begun** to explore and can return
- Connected using **HUBS and CIRCLE ROUTES** – to create possibilities and creative journeys, but still provide shorter, simple, comfortable, circular loops
- HUBS that **relate to businesses and services** that can benefit economically
- And good marketing for new trail “releases” – **tied to stories**

(See: [South Shuswap Destination Situation Analysis, June 2018](#))



Three goals to enhance potential

- Explore ways in which to facilitate movement through trails into new areas and experiences within the South Shuswap landscape.
- Explore ways in which to increase the length of time spent exploring and vacationing within the area through trail infrastructure and connectivity.
- Explore ways in which to increase the appeal for users to return year after year.



Experience Hub Concept...

- identify key hubs within the South Shuswap that provide or have the potential to **provide multiple experience access**, supported by infrastructure and amenities, interconnected with both urban and wilderness trails and trail systems. . .
- proximity to **various trail experiences**, blueway, non-motorized and motorized
- Each **ties into a greater multi day epic trail** experience designed to act as a poetry piece to capture people's imaginations
- able to **return over several years** biting off small pieces of the whole
- provide a **varying range** of trail experiences from community populated to wilderness and variations in between.
- a **'soft country'** experience consistent with the Shuswap Tourism story branding tag: "Beautiful, Casual, Down-to-Earth."


Experience Hub Requirements

Basic requirements include and are not limited to:

- Public space
- Parking
- Washroom amenities
- Garbage
- Information kiosks
- Access to multiple user type trail experiences
- Access to both lake and crown land

Additional requirements for tourists include:

- Ease of access to accommodations
- Ease of access to food
- Ease of access to information
- Additional activities

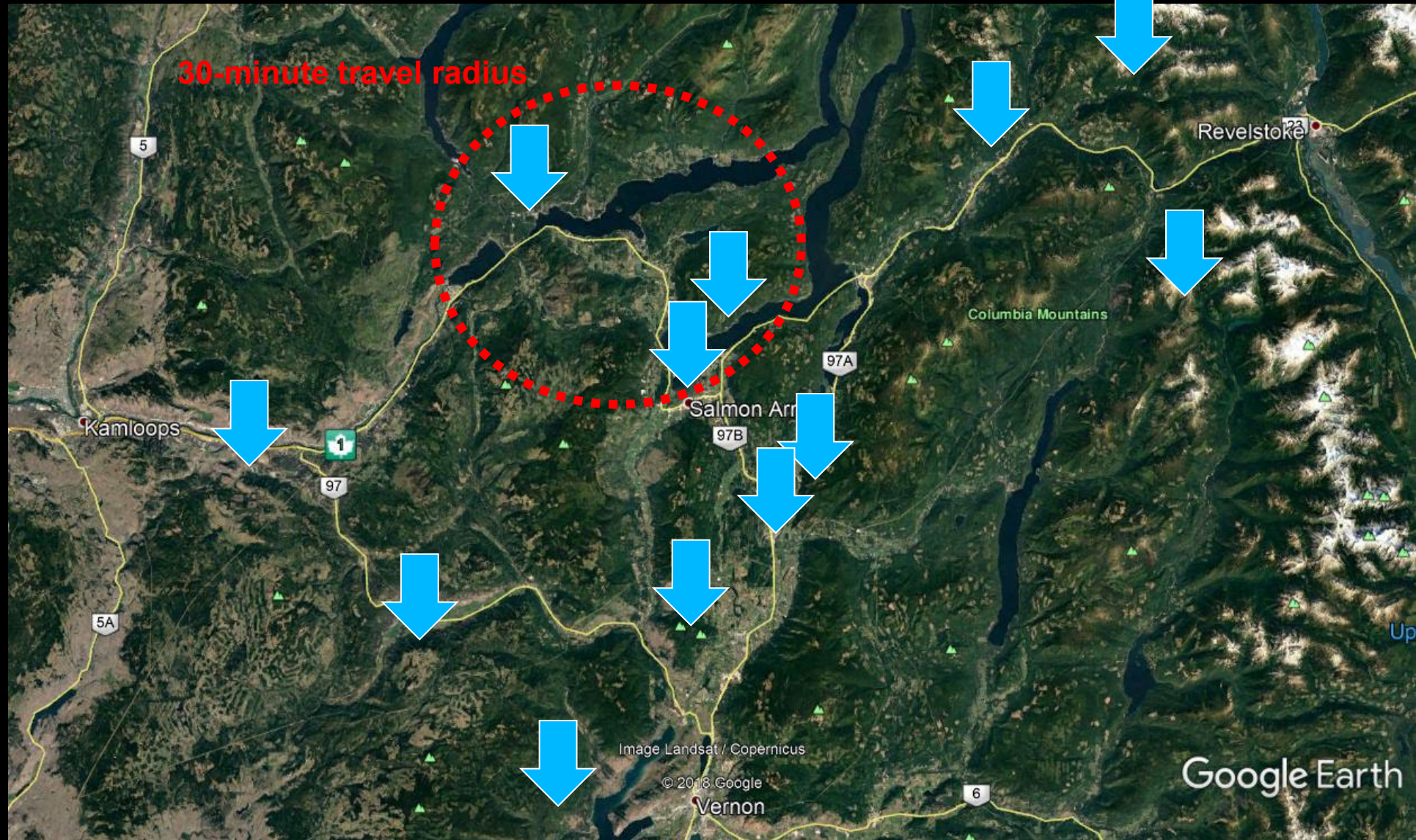


**Unfold the
true story
within
Secwepemc
Territory**

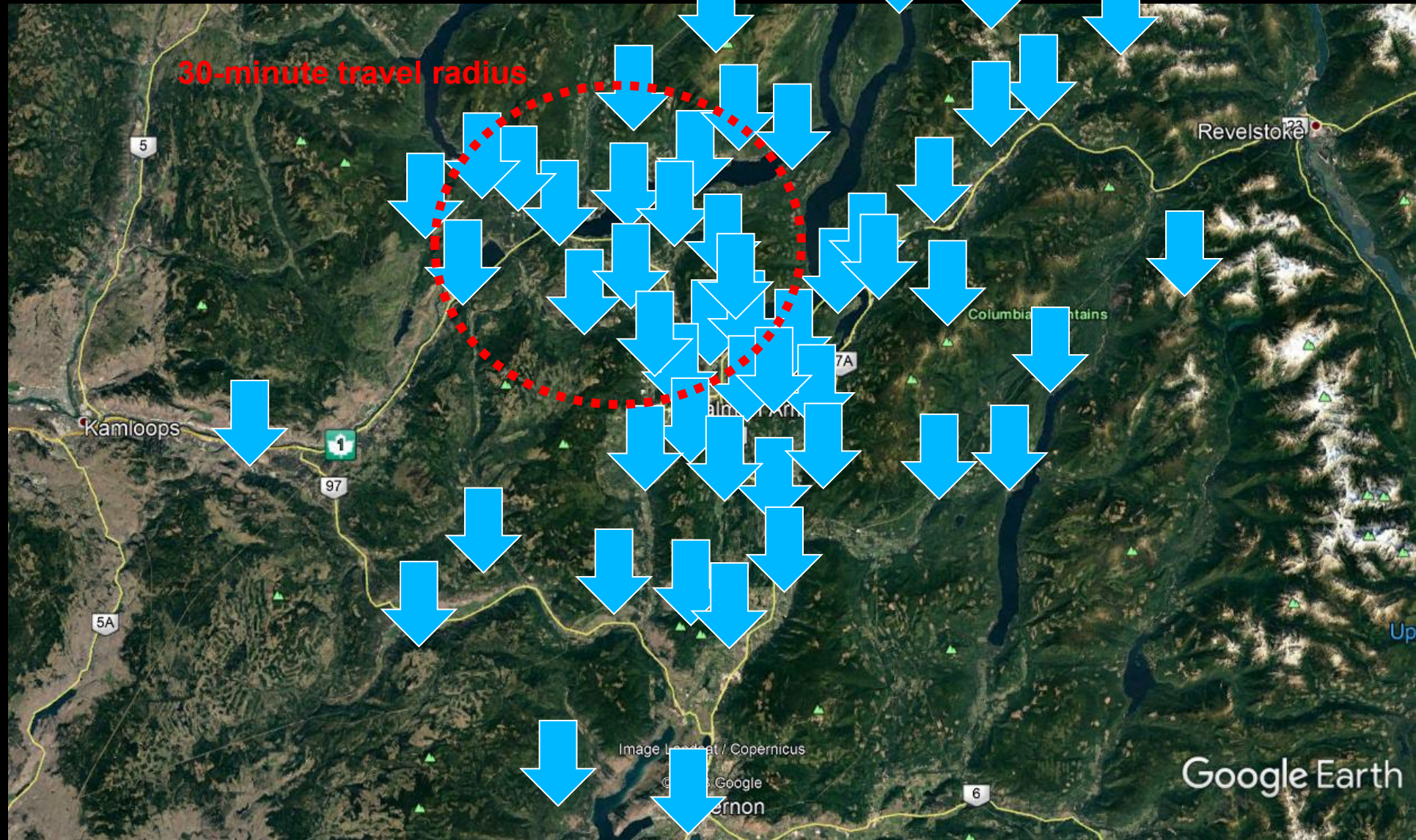
- Continue to **work with Secwépemc leadership** to enhance First Nations identity and presence in the land
- **Support Secwépemc led initiatives** like the Secwépemc Landmarks project and the Secwépemc Lakes Tourism strategy
- Work together to **take care** of the land and water, develop **plans**, and **realize** emerging opportunities

The Inventory & Emerging Concepts. . .

1996...looking for destination trails...



2019 Trails...



...the South Shuswap **IS** a trail destination!

Inventory 2018-2019

...**included** collecting and mapping
existing existing trails, skid tracks, quad & ATV use,
equestrian and social trails, forestry roads, lake access,
community hubs, amenities, natural features,
cultural/historical features, wetlands, viewpoints, and
potential new routes and trailheads. . .

AND **photographs**. . .













































































Many Moods

...many moods connecting cliff vistas to forests to wetlands to communities to lake. . .is it possible there's a kind of South Shuswap pilgrimage or discovery route emerging that weaves these recurring local elements together?

... field inventories suggest options for extended trail experience routes connecting bluff vistas, forests, wetlands, and lake to community trailhead hubs through hiking, cross-country mountain bike trips, snowshoe and backcountry touring, equestrian routes, paddle trails, and 2, 4, and 8 hour ORV/ATV loops. . .

... Secwépemc leadership have called on all the communities of the Shuswap to work with them to unfold the true story of Secwépemcúíecw. . .

...and we know every trail tells a story. . .how might South Shuswap trails make this the unfolding theme of their story?

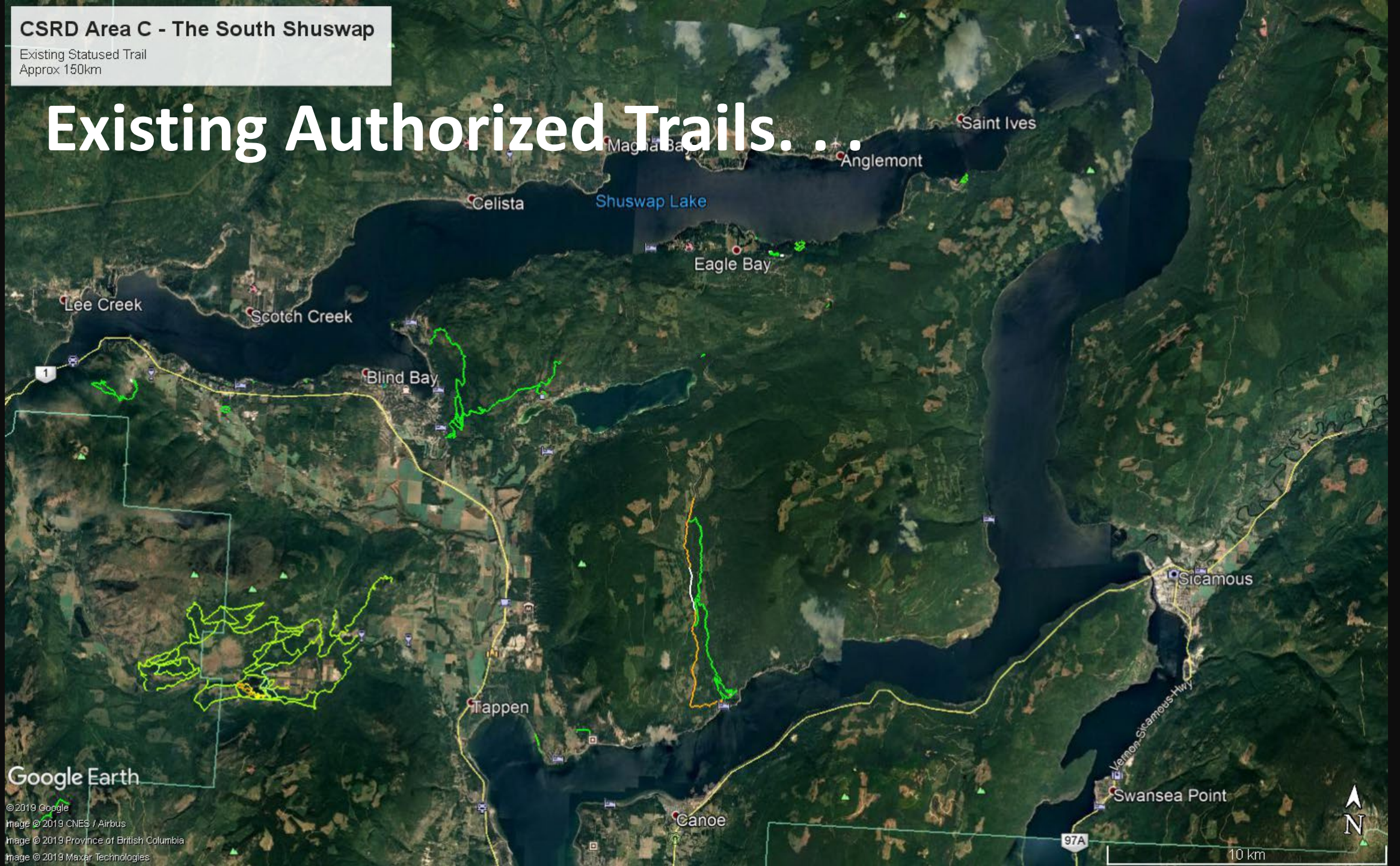
Let the discussion begin!

Current Inventory. . .existing
non-motorized & motorized routes. . .

CSRD Area C - The South Shuswap

Existing Stated Trail
Approx 150km

Existing Authorized Trails...



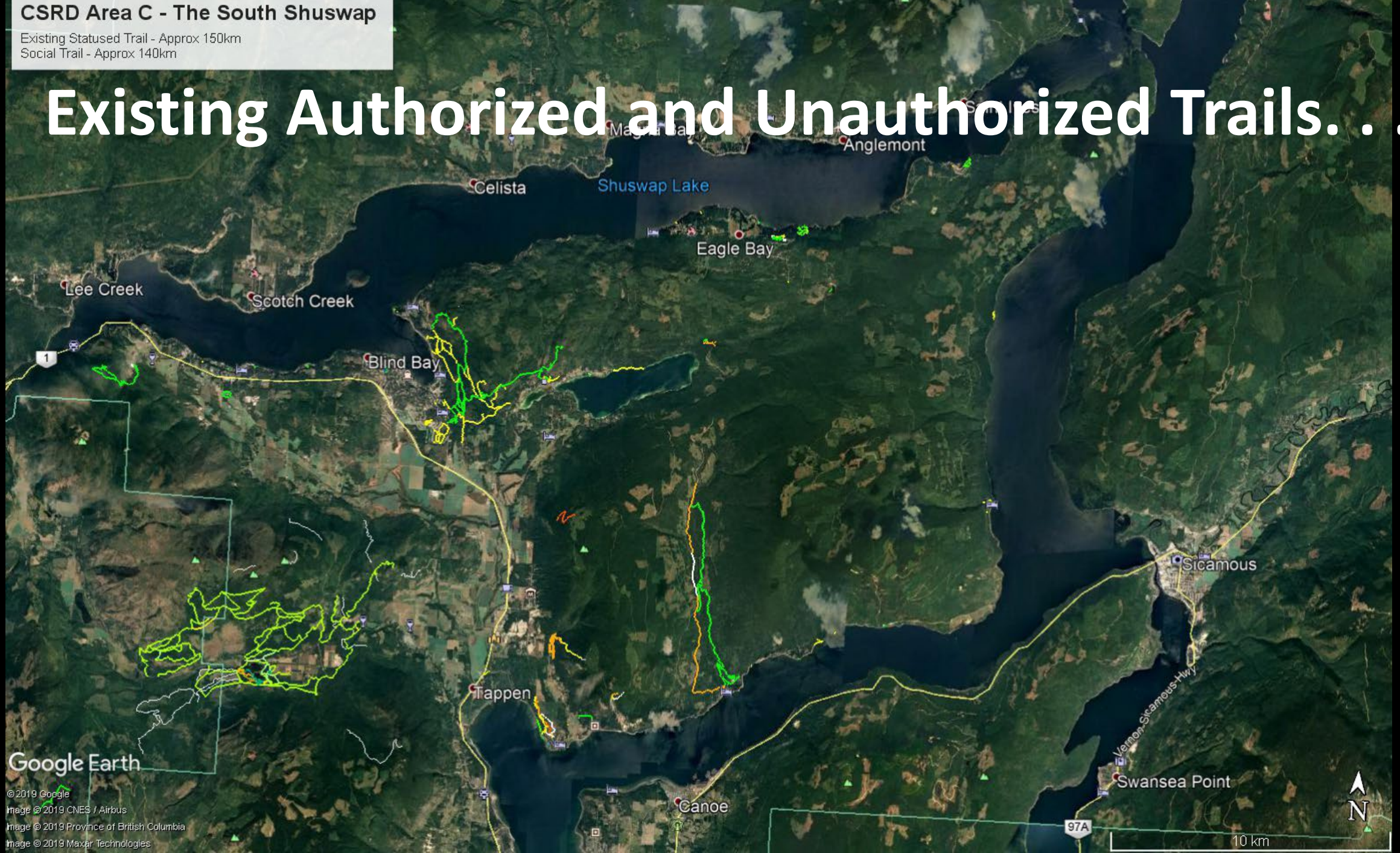
Google Earth

© 2019 Google
Image © 2019 CNES / Airbus
Image © 2019 Province of British Columbia
Image © 2019 Maxar Technologies

CSRD Area C - The South Shuswap

Existing Stated Trail - Approx 150km
Social Trail - Approx 140km

Existing Authorized and Unauthorized Trails...



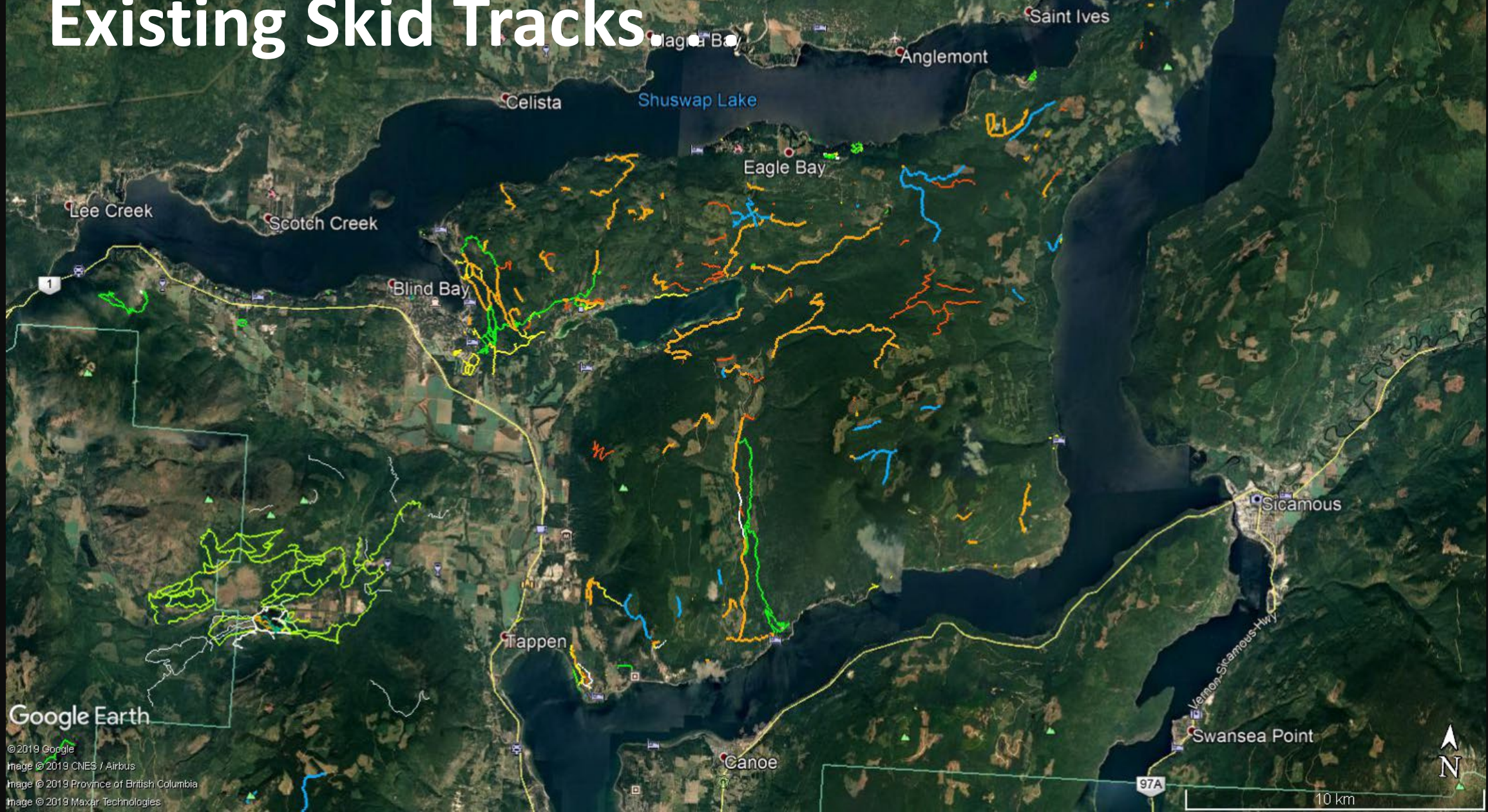
Google Earth

© 2019 Google
Image © 2019 CNES / Airbus
Image © 2019 Province of British Columbia
Image © 2019 Maxar Technologies

CSRD Area C - The South Shuswap

Existing Stated Trail - Approx 150km
Social Trail - Approx 140km

Existing Skid Tracks



Google Earth

© 2019 Google
Image © 2019 CNES / Airbus
Image © 2019 Province of British Columbia
Image © 2019 Maxar Technologies

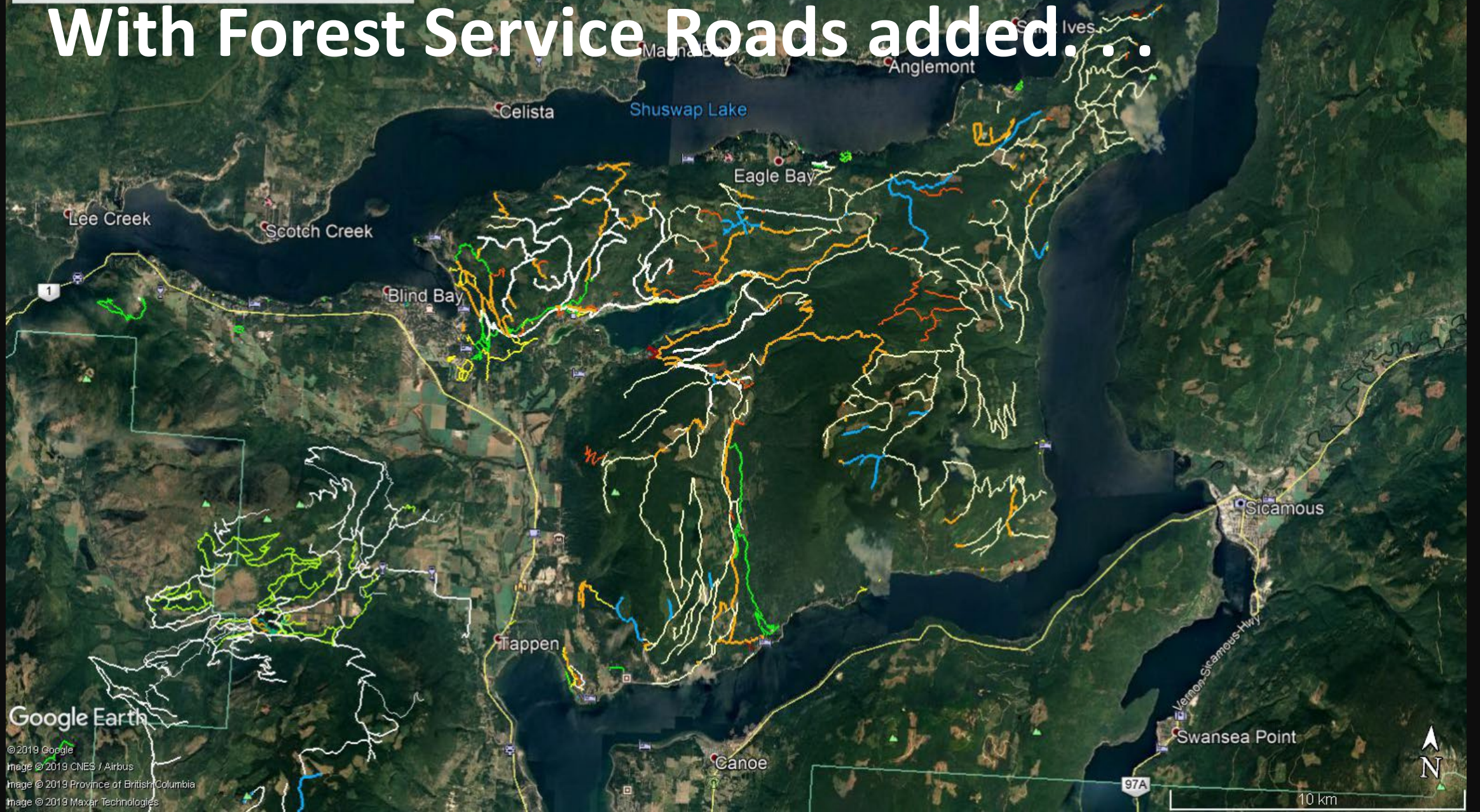
CSRD Area C - The South Shuswap

Existing Stated Trail - Approx 150km

Social Trail - Approx 140km

FSR - Approx 350km

With Forest Service Roads added...



Google Earth

© 2019 Google

Image © 2019 CNES / Airbus

Image © 2019 Province of British Columbia

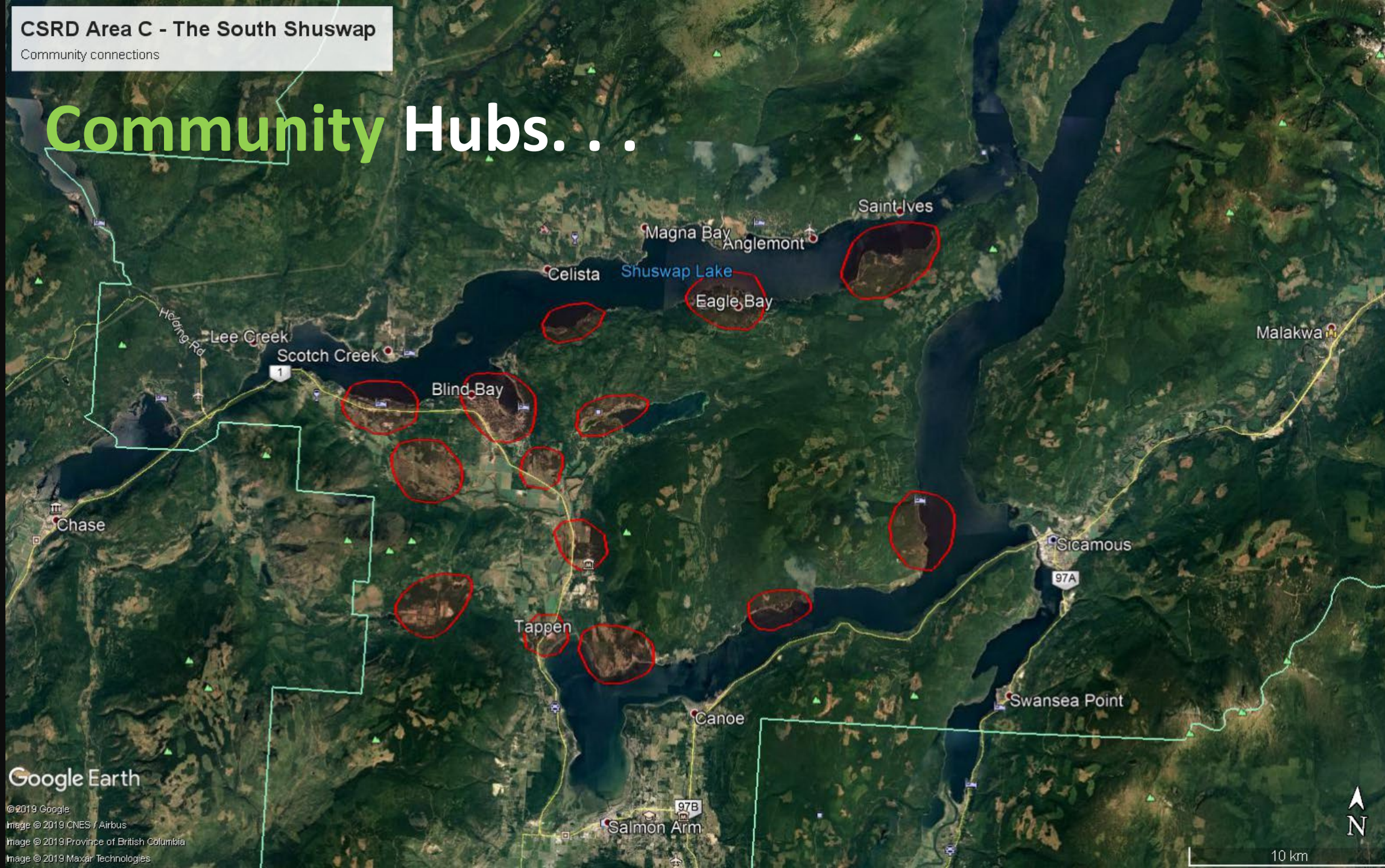
Image © 2019 Maxar Technologies

What might a managed Recreational Access approach look like?

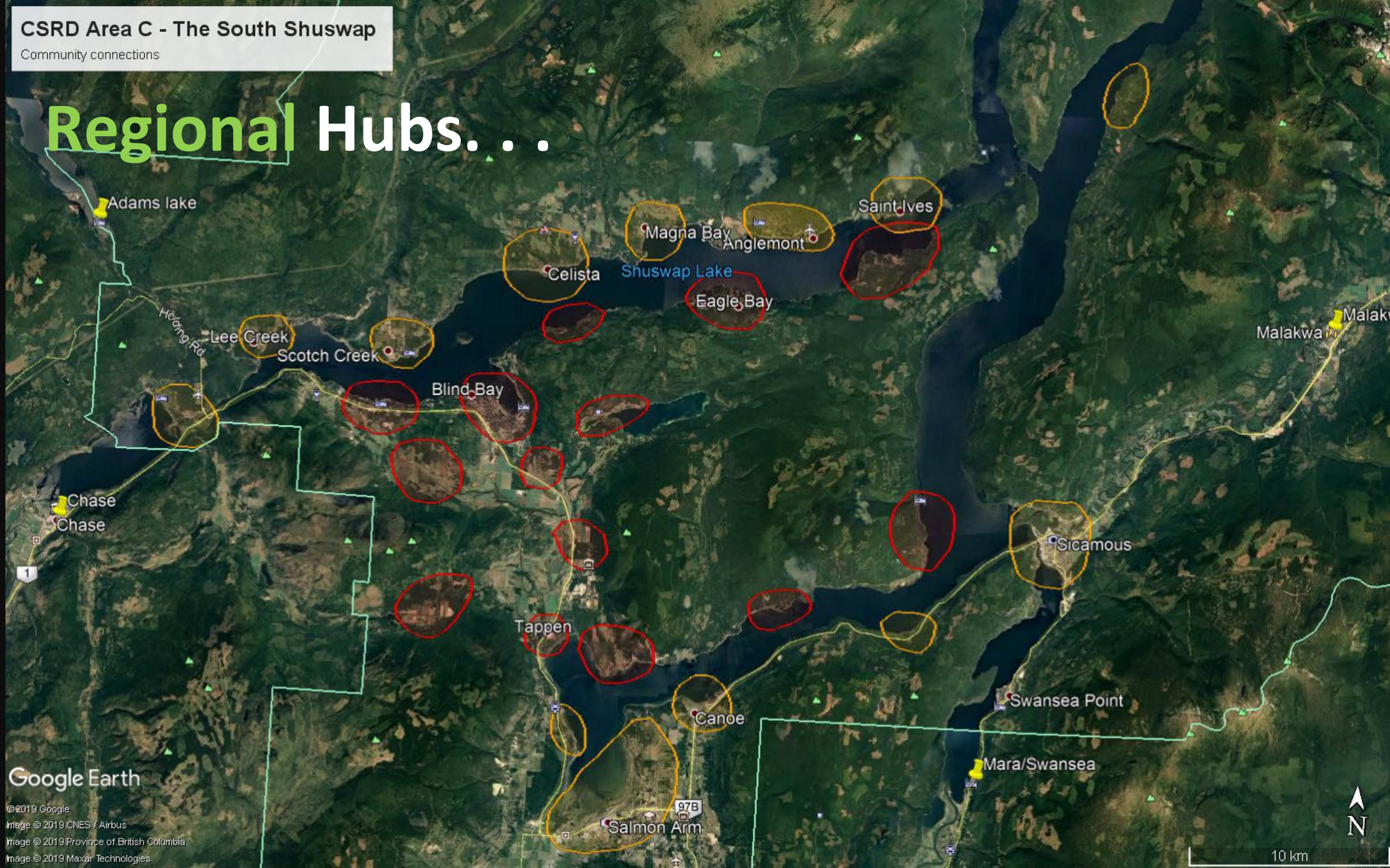
Conceptual ideas. . .

Land and water **connecting**
people & communities. . .Hubs

Community Hubs...



Regional Hubs...



A photograph of two hikers on a dirt trail. The hiker in the foreground is wearing a dark shirt, light shorts, and a wide-brimmed hat. The hiker behind is wearing a light-colored t-shirt, dark pants, and a hat. They are both carrying backpacks. The trail is surrounded by tall grass and small plants. In the background, a large body of water is visible, surrounded by a forested shoreline.

Non-motorised



What if?

...Poetry Piece

‘The Great Cinnemousun Trail’

CSRD Area C - The South Shuswap

"The Great Cinnemousin trail" (Working name)
Approx 140km

A conceptual circuit is possible...



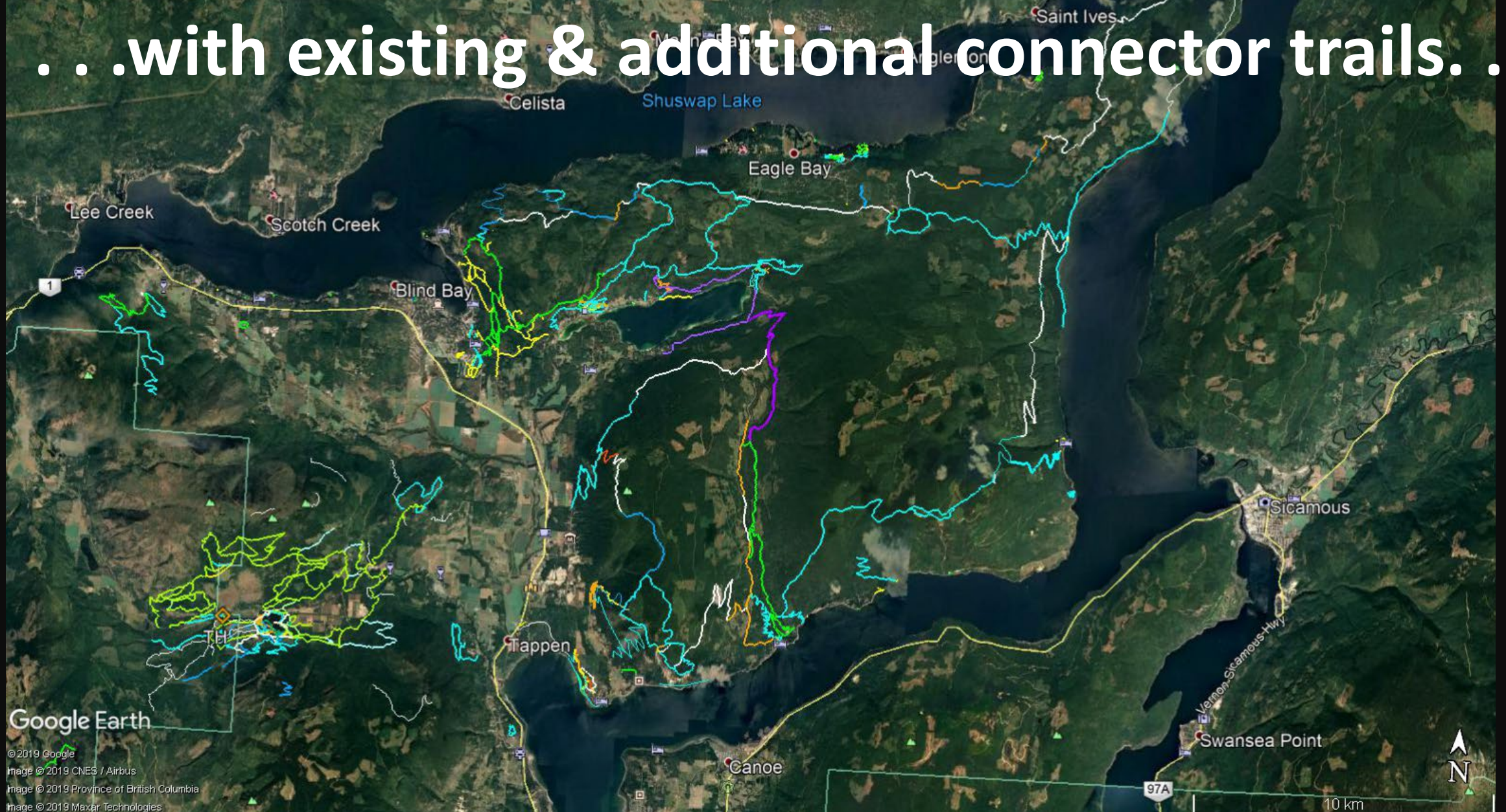
Google Earth

© 2019 Google
Image © 2019 CNES / Airbus
Image © 2019 Province of British Columbia
Image © 2019 Maxar Technologies

CSRD Area C - The South Shuswap

Existing Stated Trail - Approx 150km
Social Trail - Approx 140km
Conceptual - Approx 400km

...with existing & additional connector trails...



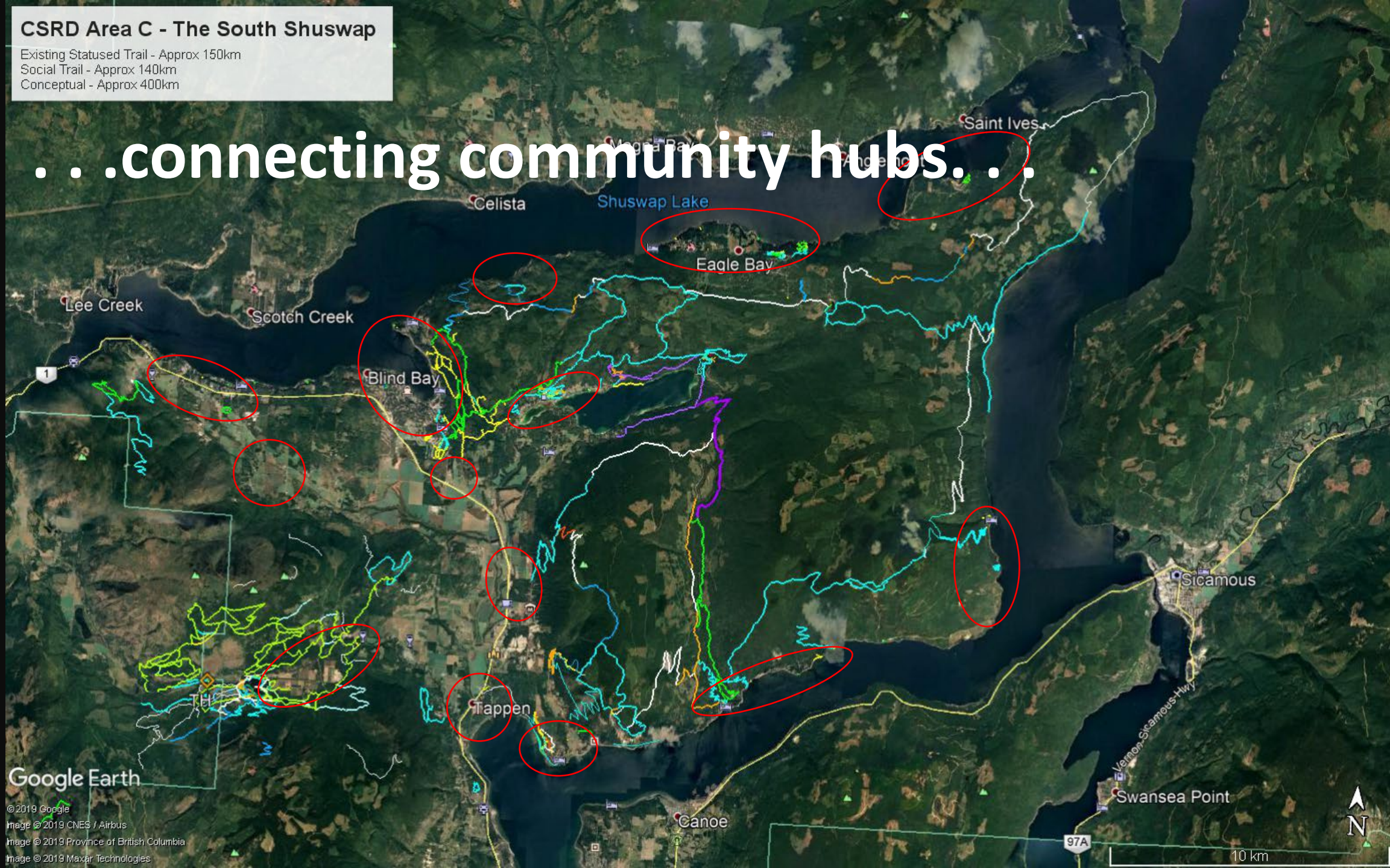
Google Earth

© 2019 Google
Image © 2019 CNES / Airbus
Image © 2019 Province of British Columbia
Image © 2019 Maxar Technologies

CSRD Area C - The South Shuswap

Existing Stated Trail - Approx 150km
Social Trail - Approx 140km
Conceptual - Approx 400km

...connecting community hubs...



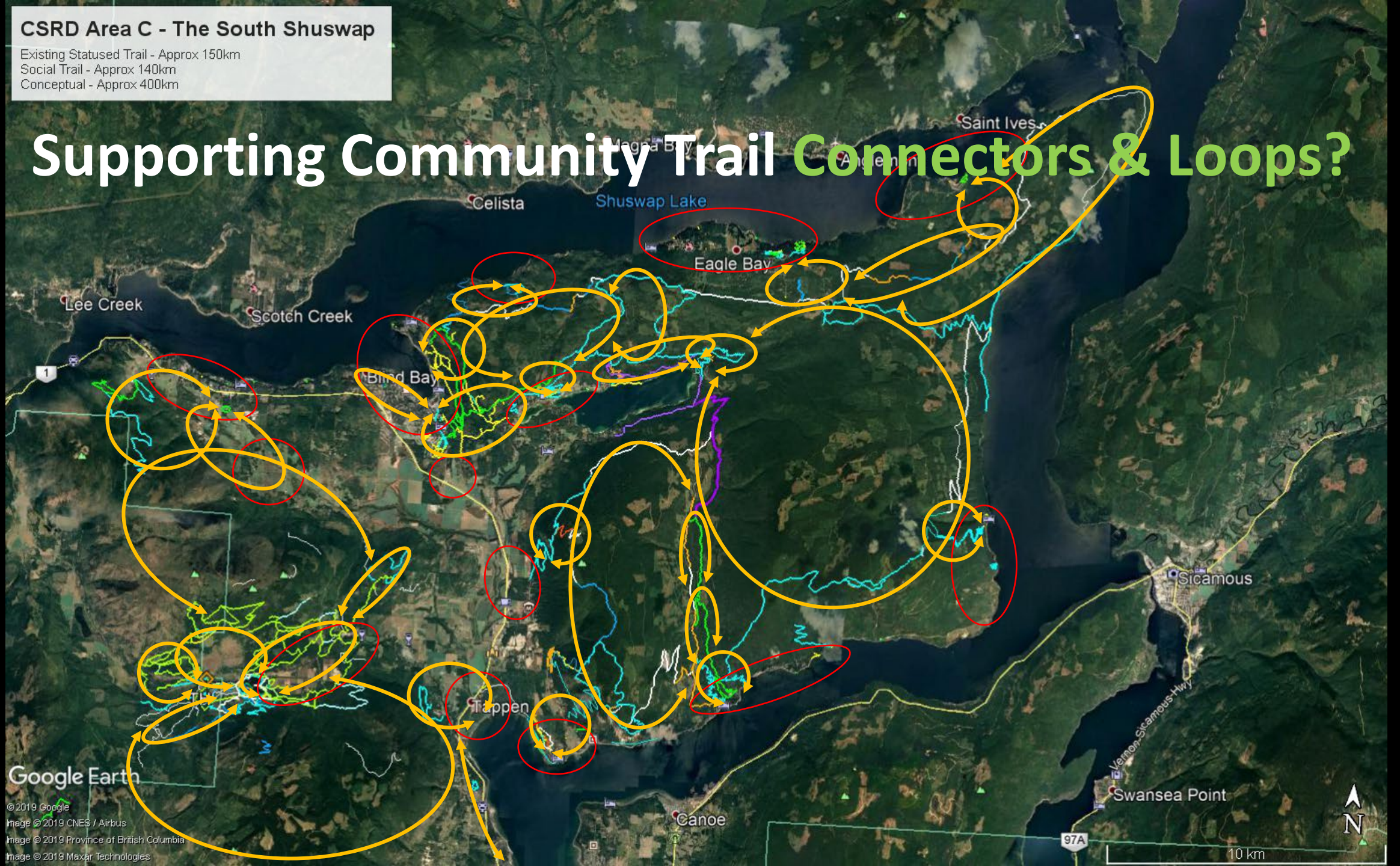
Google Earth

© 2019 Google
Image © 2019 CNES / Airbus
Image © 2019 Province of British Columbia
Image © 2019 Maxar Technologies

CSRD Area C - The South Shuswap

Existing Stated Trail - Approx 150km
Social Trail - Approx 140km
Conceptual - Approx 400km

Supporting Community Trail Connectors & Loops?



A man with grey hair, wearing a dark motorcycle jacket with bright yellow reflective stripes and a "SUZUKI" patch on the chest, is seated on a motorcycle. He is looking off to the side. The background features a vast, scenic landscape with a large body of water, distant mountains, and evergreen trees. The overall scene is dimly lit, suggesting dusk or dawn. The text "ATV/Motorbike/ORV Opportunity" is overlaid in the center of the image, with "Opportunity" in a light green color.

ATV/Motorbike/ORV Opportunity

Potential for a managed series of integrated 2-hour, 4 hour, and full day motorized **ORV** loop routes. . .



CSRD Area C - The South Shuswap

Existing Stated Trail - Approx 150km

Social Trail - Approx 140km

Conceptual - Approx 400km

ORV loop potential shown combined with existing and potential non-motorized trails. . .



Google Earth

© 2019 Google

Image © 2019 CNES / Airbus

Image © 2019 Province of British Columbia

Image © 2019 Maxar Technologies

CSRD Area C - The South Shuswap

Existing Stated Trail - Approx 150km
Social Trail - Approx 140km
Conceptual - Approx 400km



Recreation impacts the environment – a managed approach can control impact. . . Trailhead Staging is an important tool . . . possible central hub option

Google Earth

© 2019 Google
Image © 2019 CNES / Airbus
Image © 2019 Province of British Columbia
Image © 2019 Maxar Technologies



10 km



Blueways. . .

Secwépemc leadership have identified **water trails** to be of primary importance within the lake's region of Secwépemcúlecw and have recommended they be considered part of the Shuswap Regional Trail Strategy.

South Shuswap is **surrounded** by water. . .



South Shuswap - Blueway Paddle Trail

Concept Only


...what if... **Blueway** water trail route?



Google Earth

Image © 2022 CNES / Airbus
Image © 2022 Maxar Technologies
Image © 2022 Province of British Columbia

Legend

 Hand Launch Access points



10 km

CSRD Area C - The South Shuswap

Existing Stated Trail - Approx 150km
Social Trail - Approx 140km
Conceptual - Approx 400km

...linked with land trails?



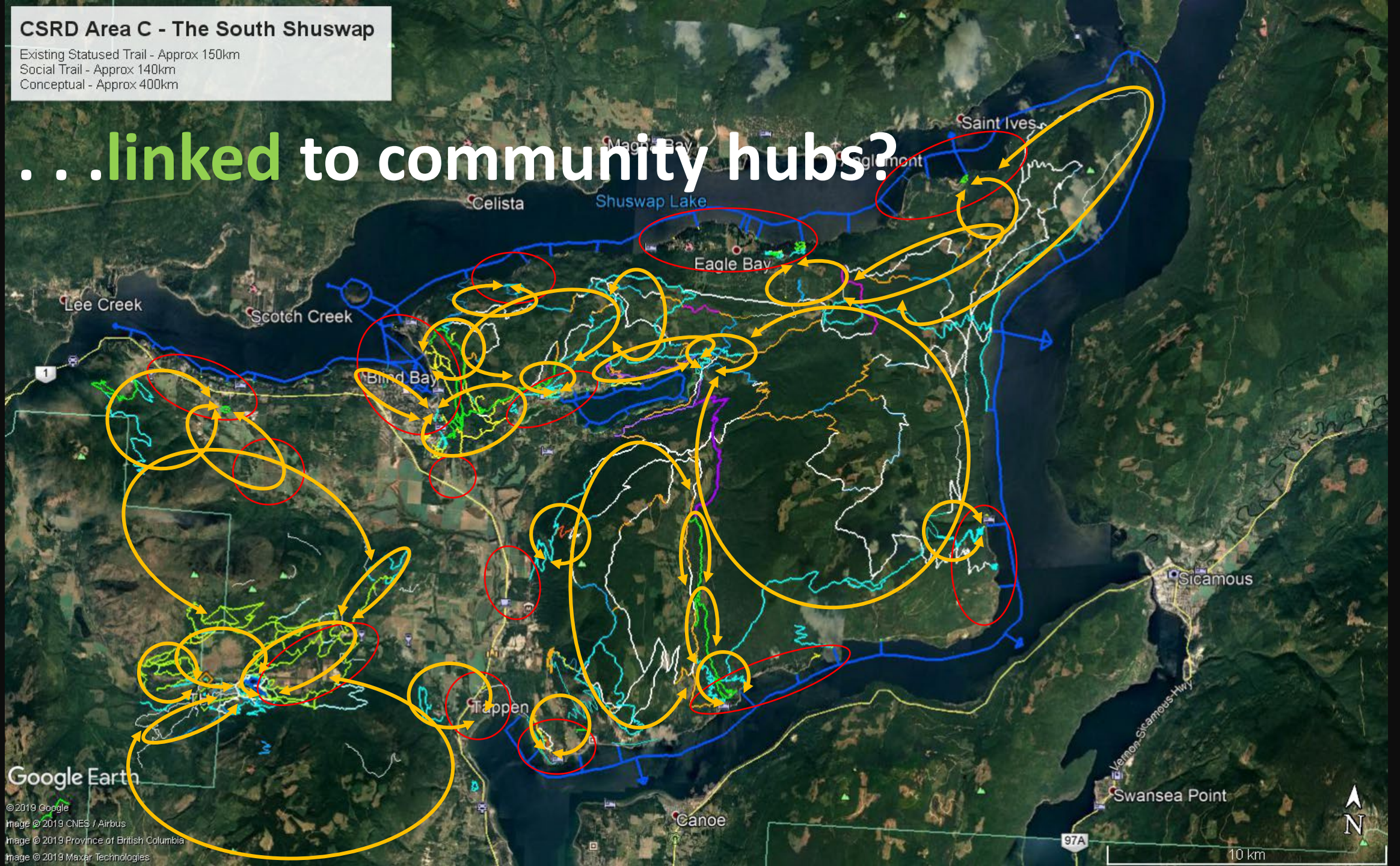
Google Earth

© 2019 Google
Image © 2019 CNES / Airbus
Image © 2019 Province of British Columbia
Image © 2019 Maxar Technologies

CSRD Area C - The South Shuswap

Existing Statused Trail - Approx 150km
Social Trail - Approx 140km
Conceptual - Approx 400km

...linked to community hubs?



Google Earth

© 2019 Google
Image © 2019 CNES / Airbus
Image © 2019 Province of British Columbia
Image © 2019 Maxar Technologies

Other Considerations:

Universal & Adaptive Trails

Active Transport Planning

Secwépemc Landmarks Project

Secwépemc Cultural Protection & Guardians

Community Capacity & Health

Implementation. . .

- Plan is only a framework to guide recreational access by multiple players
- Must be a collaborative, multi-partner driven approach
- Must integrate with Secwépemc planning, priorities and values
- Each project requires lead proponents & leadership champions
- CSRD Parks can support some, as appropriate, but not all
- Shuswap Trail Alliance can only support those with clear partners
- A few current projects with lead champion/proponents:
 - **Skimikin Lake** (Backcountry Horsemen, RSTBC, ORV, STA)
 - **White Lake/Cedar Creek** (WLRA, BC Parks, STA, People-In-Motion Camp)
 - **Reinecker Creek** (CSRD, STA, RSTBC, BC Parks)
 - **Sunnybrae** (CSRD, STA)
 - **Secwépemc Landmarks & Trailhead Signs** (ALIB, Neskonlith, Splat sin, LSLB, STA)
 - **ORV Loops** (possible emerging ORV leadership???)

Discovery. . .

Consider – What if? . . .

Community **Hubs** & local trail **spokes**. . .

. . . linked by a conceptual circuit trail. . .

. . . a **Poetry** Piece. . .

. . . a possible “**Pilgrimage**”. . .

. . . or “**Discovery** Journey” Framework. . .

. . . and complimentary ORV loop routes. . .

. . . grounded in a theme of working together to unfold the true story of **Secwépemcúíecw** in this place. . .

Every trail tells a story. . .how might the South Shuswap trails make this the unfolding theme of their story?



Questions. . .

- What are the priorities?
- What are the challenges?
- What is missing?
- What will it take?

What next?

- Secwépemc Collaboration/Consultation
- Sector leadership consultation
- Youth Session (July)
- Review, Priorities, Costing
- Final draft report (Sept)



Kukstemc
(Thank you)

More information: [CSRD Connect](#)