


P:\MA\Nantucket\MA\Com\Reviews\Road-Bike Path\Doc\Current\Review\GIS\In-base\bike path study_1.dwg

Project:
TOWN OF NANTUCKET, MA

 NANTUCKET PLANNING
 AND ECONOMIC
 DEVELOPMENT
 COMMISSION (NP&ED)
 2 FAIRGROUNDS ROAD
 NANTUCKET, MA 02554

Weston & Sampson
 427 Main Street,
 Suite 400, Worcester, MA 01608
 978.977.0110 800.SAMPSON
 www.westonandsampson.com

Consultants:

Revisions:

No.	Date	Description

Seal:

Issued For:


Scale: 1" = 10'
 Date: SEPTEMBER 19, 2023
 Drawn By: LA/GB
 Reviewed By: JM
 Approved By: BK
 W&S Project No: ENG22_1221
 W&S File No: XXX

Drawing Title:
**BIKE PATH
 ALTERNATE
 LAYOUT
 OPTION-1**
 Sheet Number:
OPT-102



Existing location of the vehicular guardrail prevents a full 5' width of the bike path.
A new guardrail will be installed

Project:
TOWN OF NANTUCKET, MA



NANTUCKET PLANNING AND ECONOMIC DEVELOPMENT COMMISSION (NP&ED)
2 FAIRGROUNDS ROAD
NANTUCKET, MA 02554

Weston & Sampson
427 Main Street,
Suite 400, Worcester, MA 01608
978.977.0110 800.SAMPSON
www.westonandsampson.com

Consultants:

Revisions:

No.	Date	Description

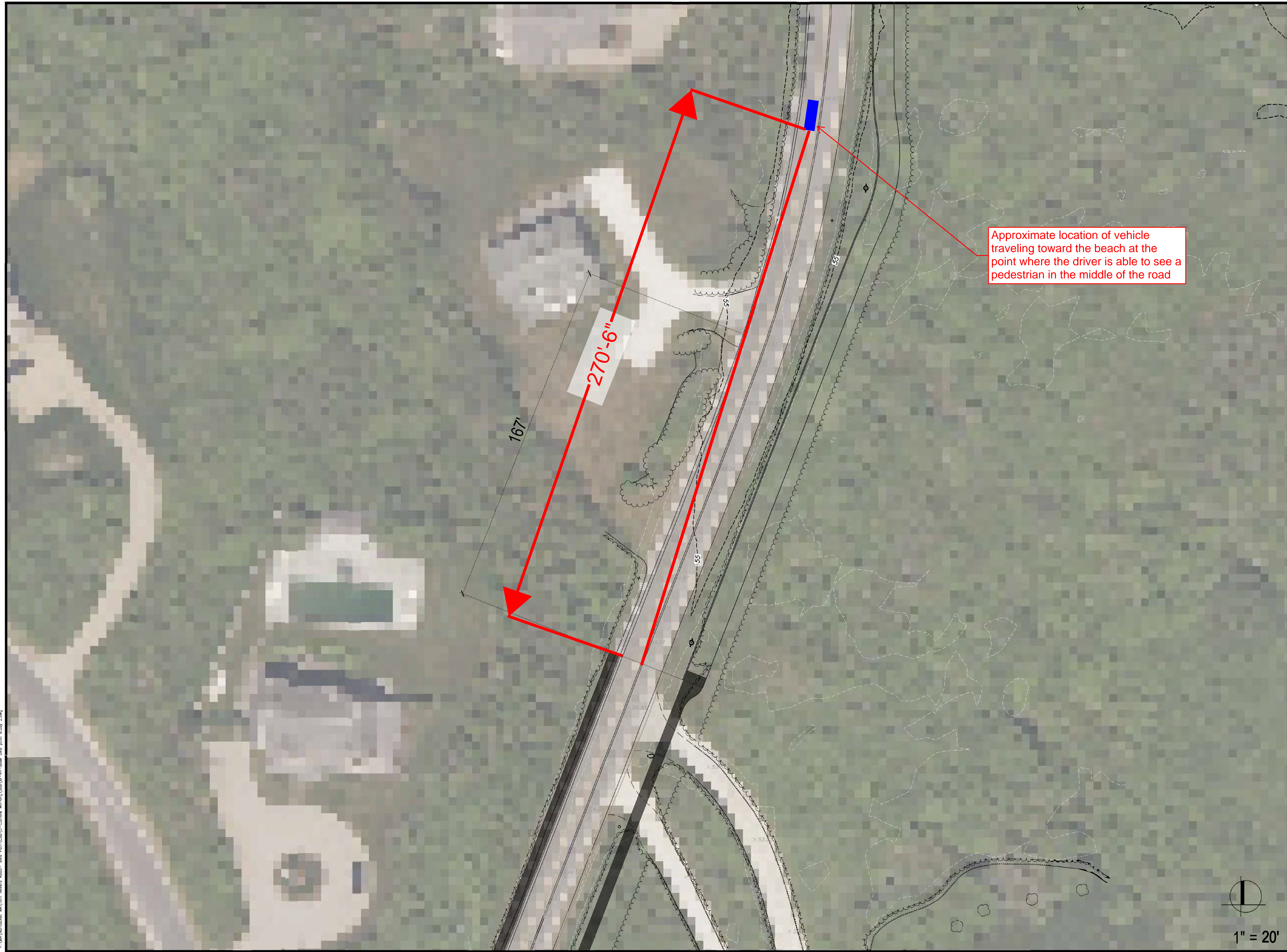
Seal:

Issued For:

Scale: 1" = 10'
Date: SEPTEMBER 19, 2023
Drawn By: LA/GB
Reviewed By: JM
Approved By: BK
W&S Project No: ENG22_1221
W&S File No: XXX

Drawing Title:
BIKE PATH ALTERNATE LAYOUT OPTION-1
Sheet Number:
OPT-103

P:\NA\Nantucket\NA\Tom Hevers Road- Bike Path\Code-CURRENT\Planning\GIS\Map-Im-base-bike-path-study-1.dwg



Consultants:

Revisions:

No.	Date	Description

Seal:

Issued For:

Scale: 1" = 20'

Date: SEPTEMBER 19, 2023

Drawn By: LA/GB

Reviewed By: JM

Approved By: BK

W&S Project No: ENG22_1221

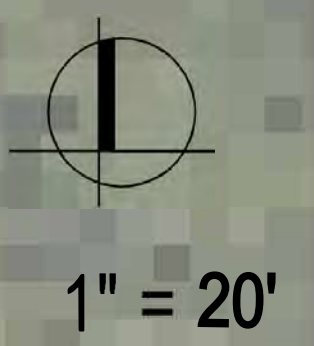
W&S File No: XXX

Drawing Title:

**BIKE PATH
ALTERNATE
LAYOUT
OPTION-2**

Sheet Number:


OPT-201



P:\NA\Nantucket MA\Tom Hevers Road- Bike Path\Doc\Current Working\2023\10-19-23 base bike path study 2.dwg



P:\MA\Nantucket\MA\Com\News\Roads-Bike\Path\Doc\0-Current\Working\Site\plan-base-bike-path-study-2.dwg

Project:
TOWN OF NANTUCKET, MA

 NANTUCKET PLANNING
 AND ECONOMIC
 DEVELOPMENT
 COMMISSION (NP&ED)
 2 FAIRGROUNDS ROAD
 NANTUCKET, MA 02554

Weston & Sampson
 427 Main Street,
 Suite 400, Worcester, MA 01608
 978.977.0110 800.SAMPSON
 www.westonandsampson.com

Consultants:

Revisions:

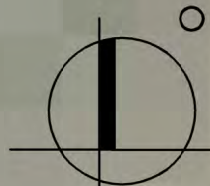
No.	Date	Description

Seal:

Issued For:

Scale: 1" = 10'
 Date: SEPTEMBER 19, 2023
 Drawn By: LA/GB
 Reviewed By: JM
 Approved By: BK
 W&S Project No: ENG22_1221
 W&S File No: XXX

Drawing Title:
**BIKE PATH
 ALTERNATE
 LAYOUT
 OPTION-2**
 Sheet Number:
OPT-202


 1" = 10'