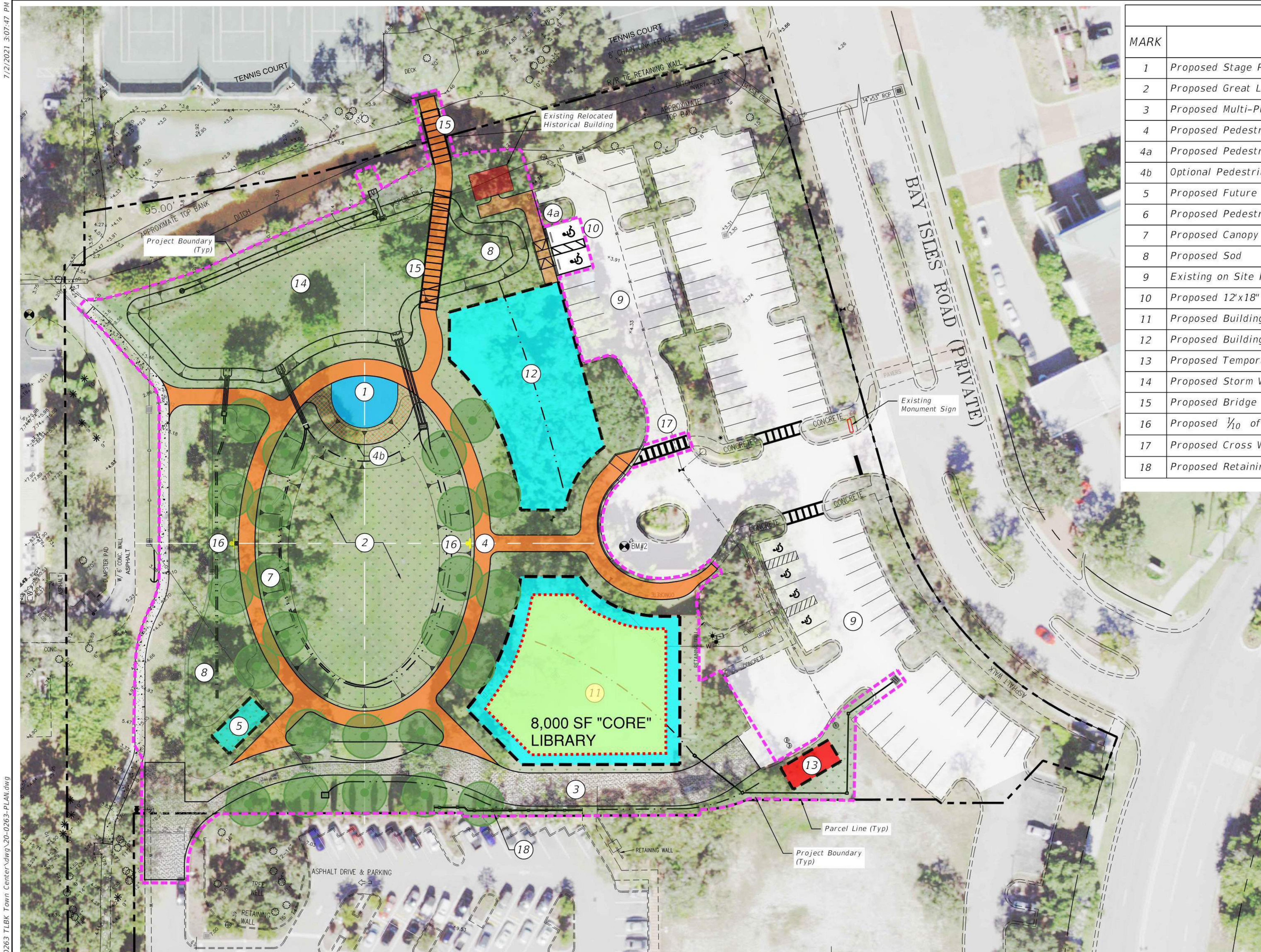


# Longboat Key Library - Site

7/12/2021 3:07:47 PM



Proposed Improvements			
MARK	Description	Unit	Approx. Quant.
1	Proposed Stage Pad	S.Y.	111
2	Proposed Great Lawn	S.Y.	2,167
3	Proposed Multi-Purpose Shell Esplanade - 20' Wide	S.Y.	822
4	Proposed Pedestrian Walkway - 10' Wide - 10,024 S.F.	S.Y.	1,120
4a	Proposed Pedestrian Walkway - 8' Wide - 693 S.F. (By Other)	S.Y.	77
4b	Optional Pedestrian Walkway - 10' Wide - Around Stage Pad	S.Y.	100
5	Proposed Future Restroom Facilities	S.F.	500
6	Proposed Pedestrian Light Poles (Not Shown)	EA.	24
7	Proposed Canopy Trees Allee	EA.	24
8	Proposed Sod	S.Y.	4,611
9	Existing on Site Parking	EA.	94±
10	Proposed 12'x18" Handicap Parking	EA.	2
11	Proposed Building Pad Site A	S.F.	11,200
12	Proposed Building Pad Site B	S.F.	7,700
13	Proposed Temporary Restroom Facilities	EA.	1
14	Proposed Storm Water Pond	S.F.	14,792
15	Proposed Bridge	S.Y.	130
16	Proposed 1/10 of a Mile Marker Sign	EA.	2
17	Proposed Cross Walk	EA.	1
18	Proposed Retaining Wall (6"x6" Pressure Treaded Timber)	L.F.	90

F:\Projects\2020\20-0263 TLBK Town Center.dwg, 20-0263-PLAN.dwg

JOHN K. PARI, P.E., STATE OF FLORIDA, PROFESSIONAL ENGINEER, LICENSE NO. 56368. THIS ITEM HAS BEEN ELECTRONICALLY SIGNED AND SEALED BY JOHN K. PARI, PE ON 07/02/21 USING AN SHA AUTHENTICATION CODE; PRINTED COPIES OF THIS DOCUMENT ARE NOT CONSIDERED SIGNED AND SEALED AND THE SHA AUTHENTICATION CODE MUST BE VERIFIED ON ANY ELECTRONIC COPIES. [RULE 62-330.30(4), F.A.C.; SECTION 2.2, ERP APPLICANT'S HANDBOOK VOL. II (AHV11)].

SCALE:  
NOTED @ 22"x34"  
DESIGNED BY:  
J. PARI  
DRAWN BY:  
R. STEELE  
CHECKED BY:  
J. PARI

DMK ASSOCIATES, INC.  
421 COMMERCIAL CT, SUITE C  
VENICE, FL 34292  
PHONE: 941-412-1293  
FAX: 941-412-1043  
EOR: JOHN K. PARI, P.E.  
EOR: P.E. No. 56368  
CA No: 3943

**TOWN OF LONGBOAT KEY  
PUBLIC WORKS**  
600 GENERAL HARRIS STREET  
LONGBOAT KEY, FL 34228  
(941) 316-1988

TOWN CENTER IMPROVEMENTS - OUTDOOR VENUE  
**AERIAL PHOTO AND MASTER  
SITE PLAN**

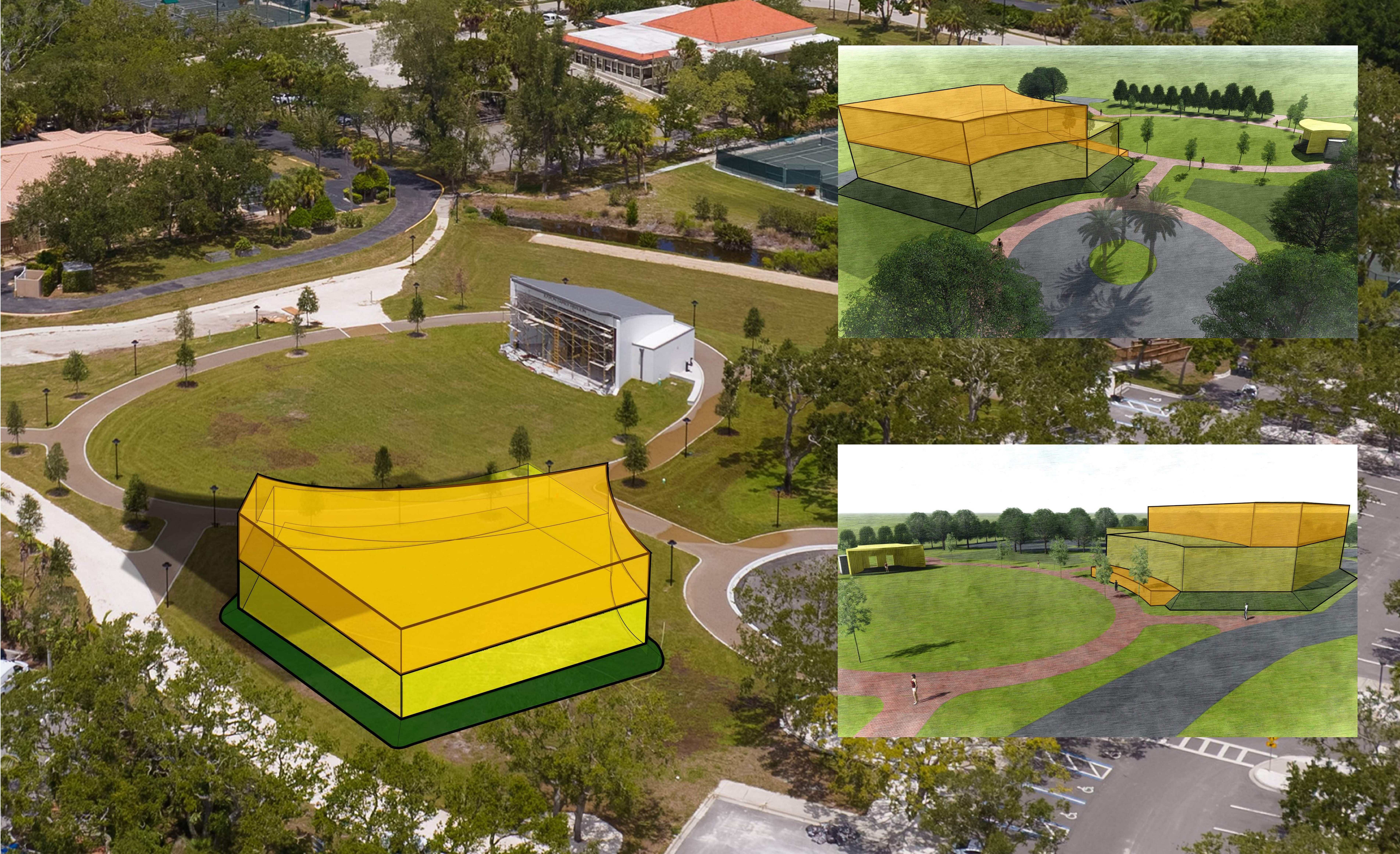
SHEET NO.  
2

NOTICE: THE OFFICIAL RECORD OF THIS SHEET IS THE ELECTRONIC FILE SIGNED AND SEALED UNDER RULE 61G15-23.004, F.A.C.

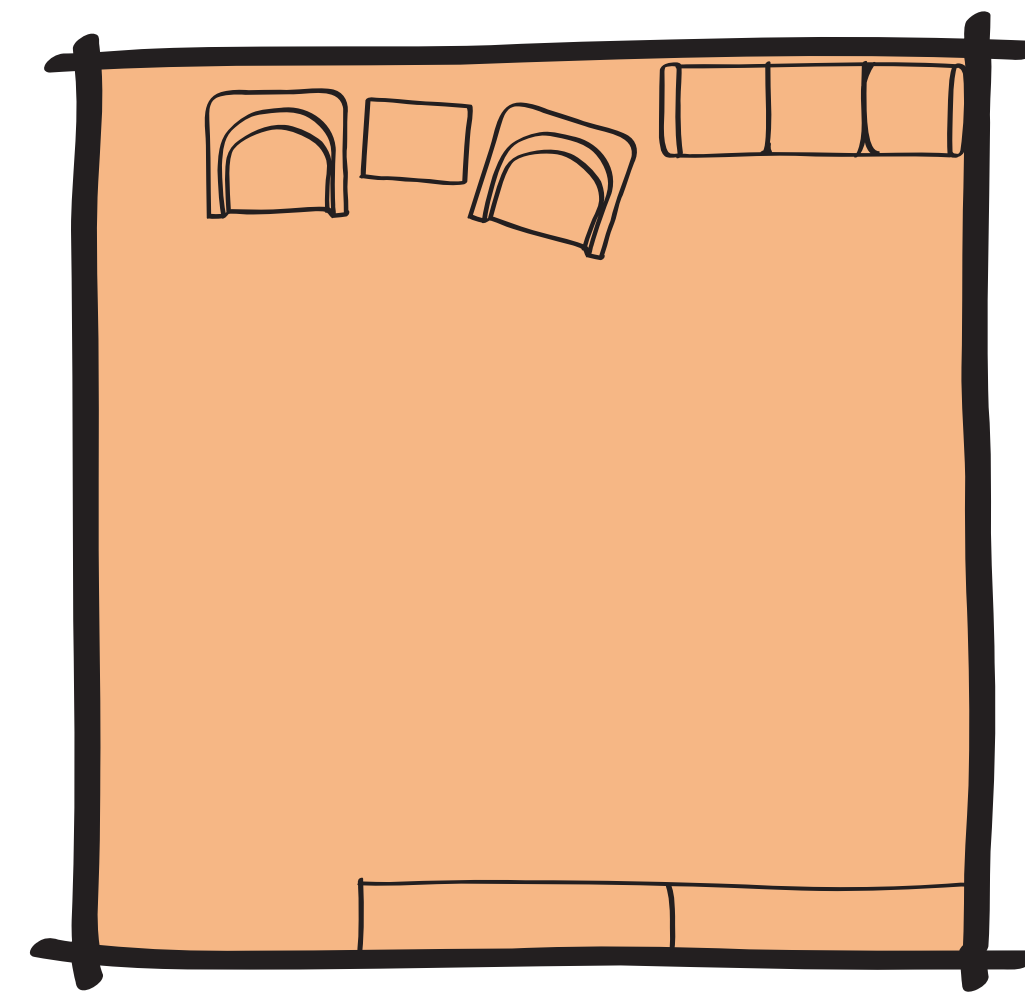
# Longboat Key Library - Core



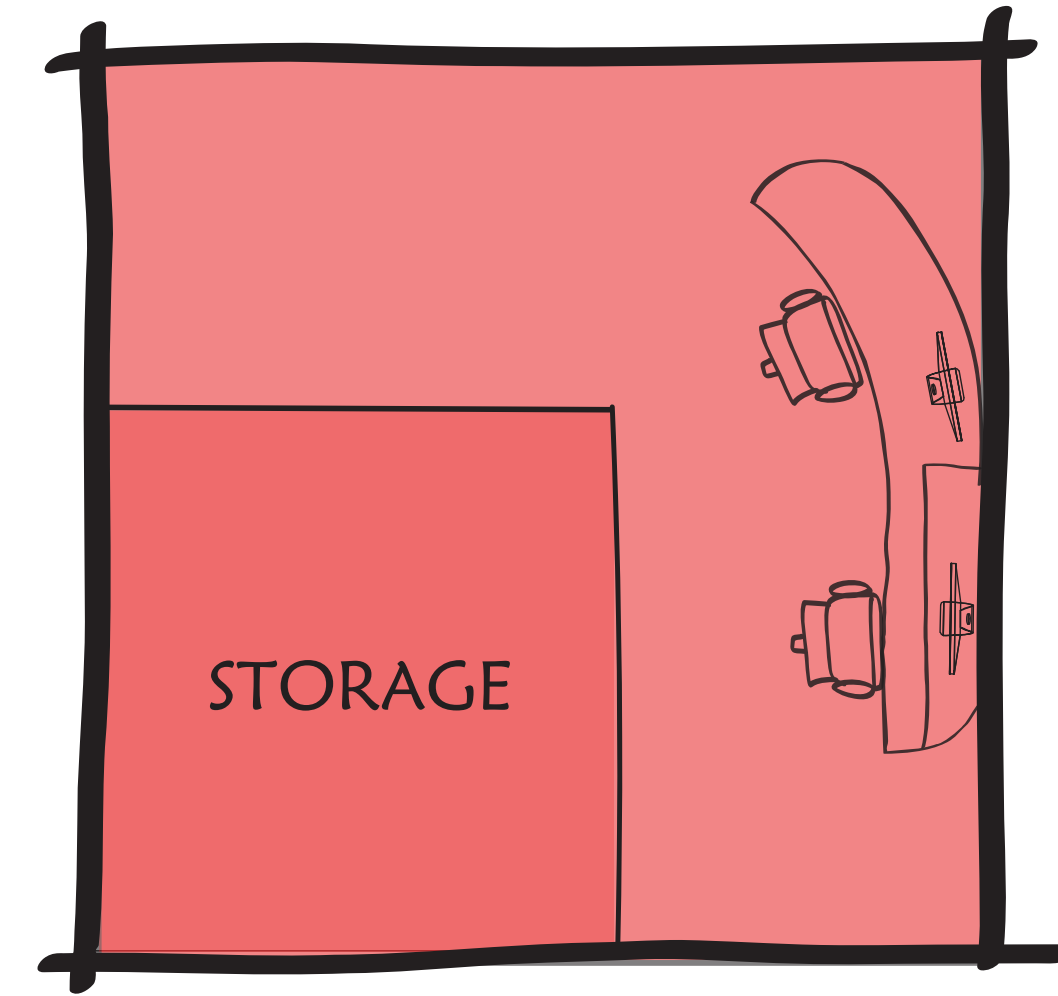
# Longboat Key Library - Enhancements



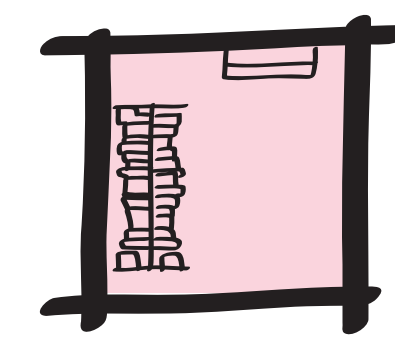
# Longboat Key Library - Core Spaces



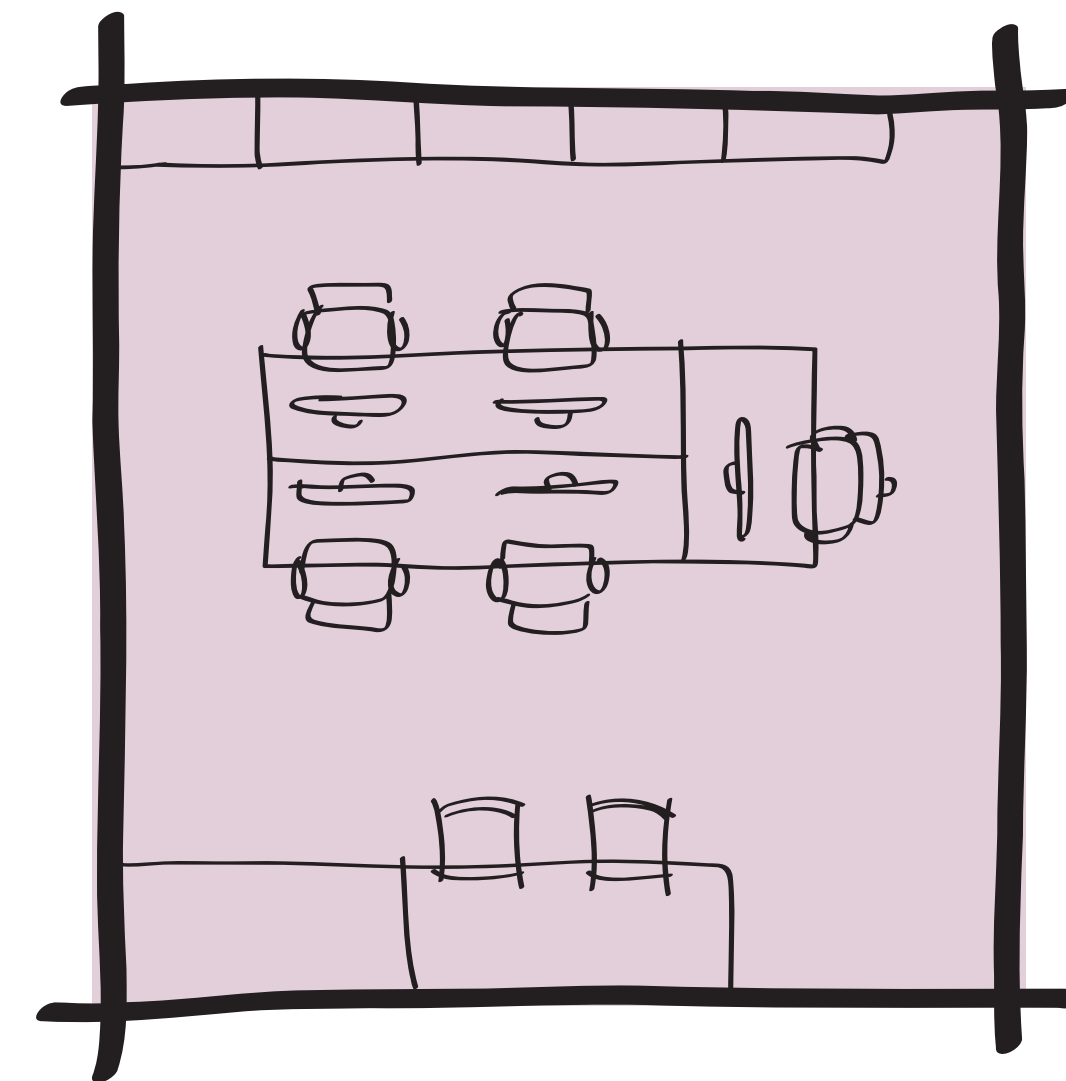
PUBLIC ENTRY / LOBBY  
300 SF



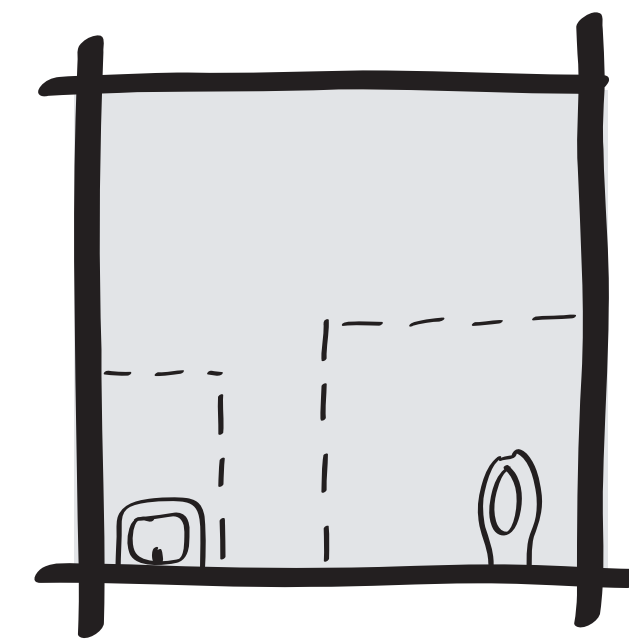
RECEPTION  
300 SF



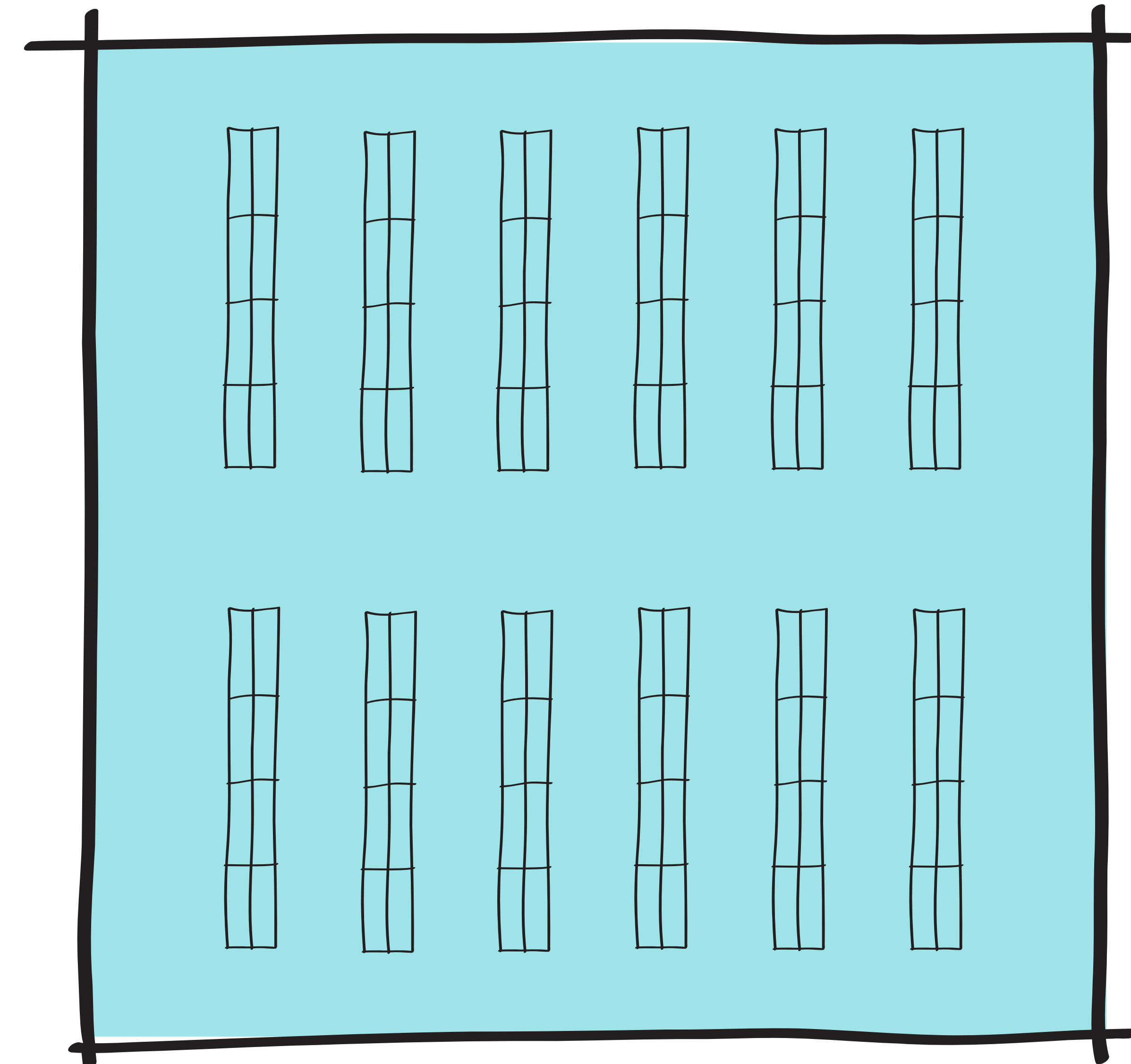
BOOK DROP  
24 SF



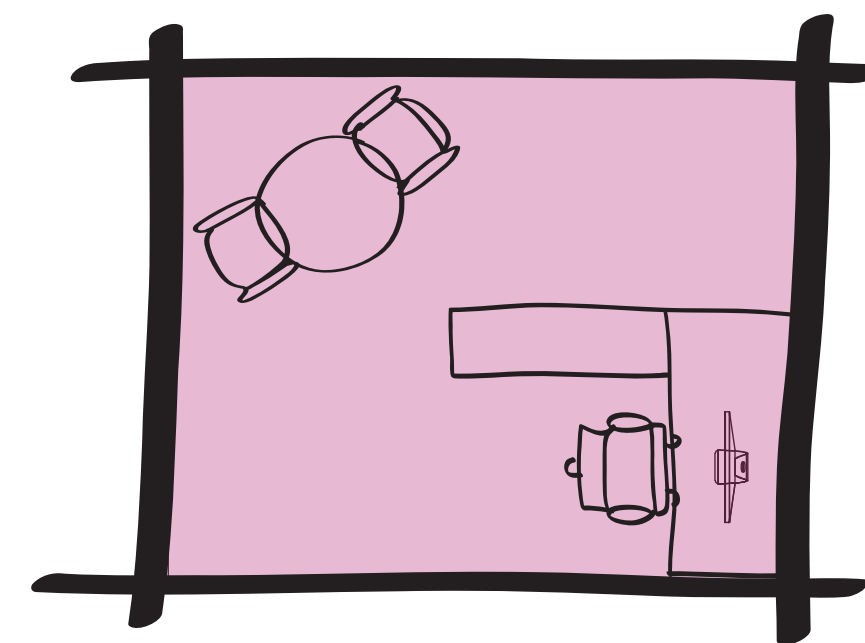
STAFF WORKROOM / WORK STATIONS  
300 SF



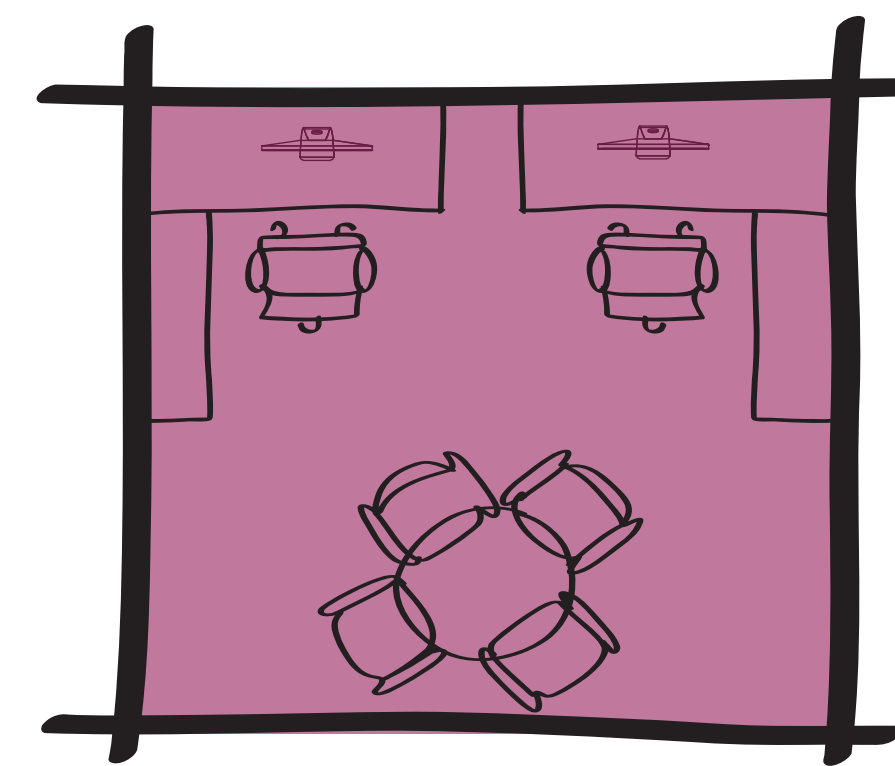
STAFF RESTROOM  
90 SF



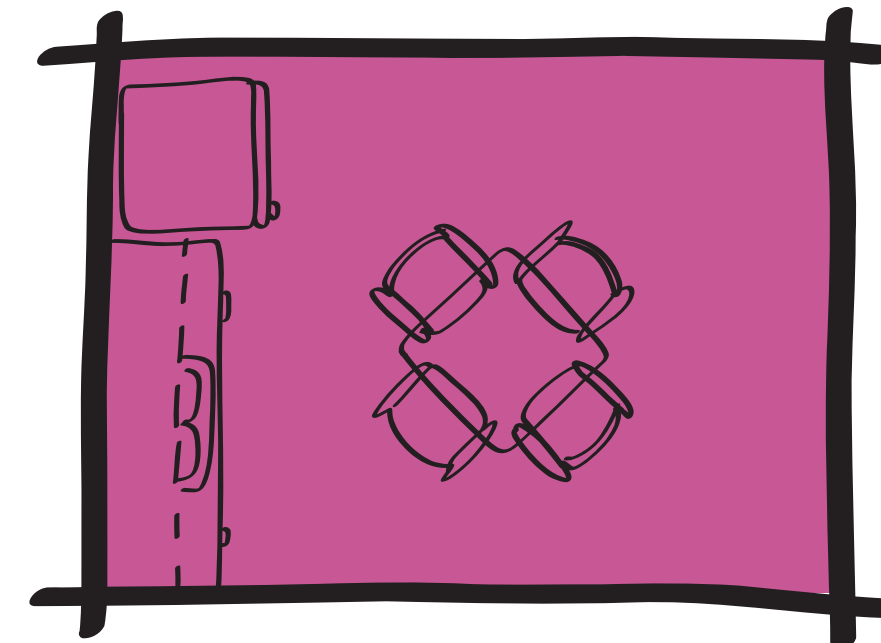
COLLECTIONS  
2000 SF



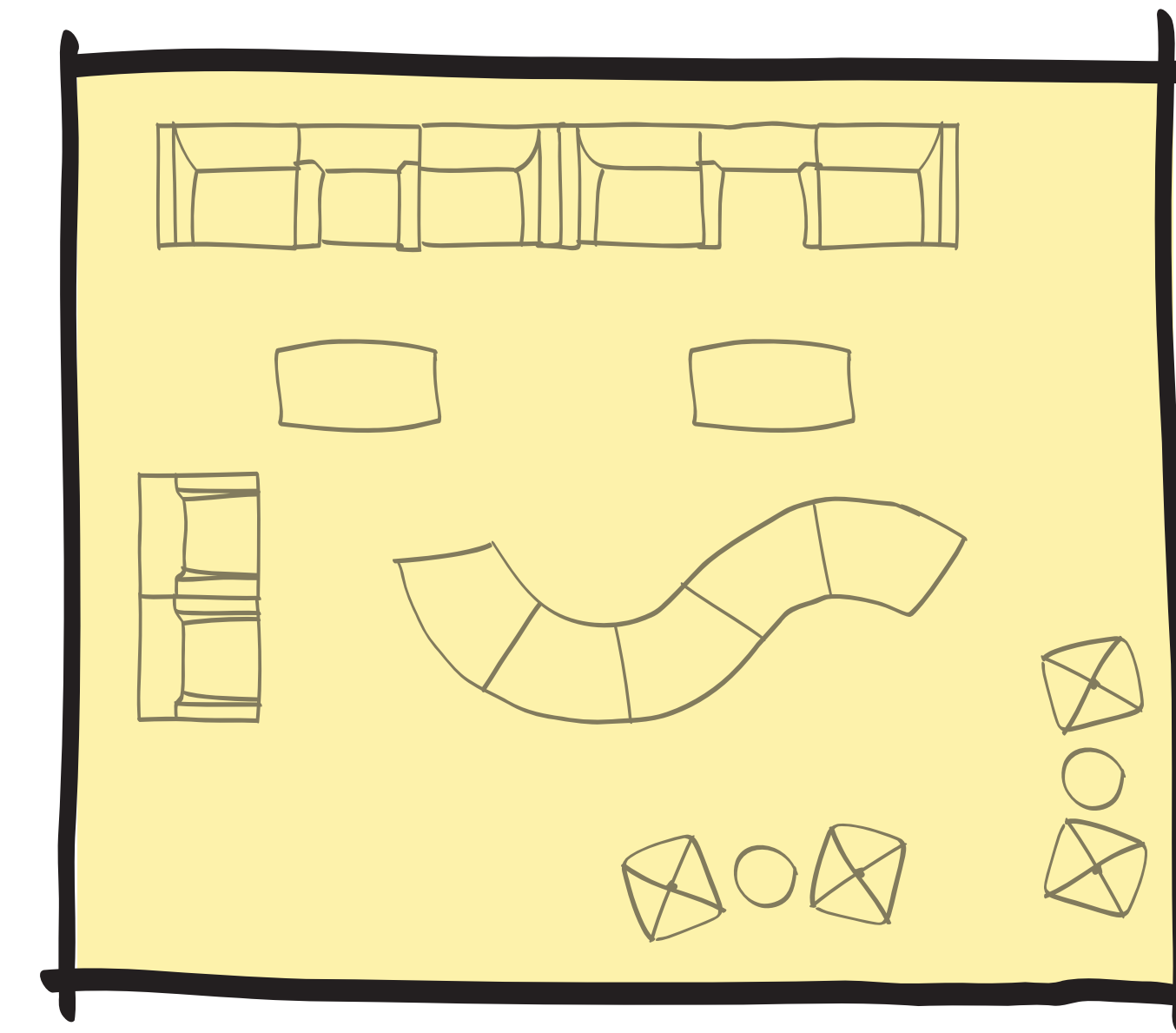
MANAGER'S OFFICE  
120 SF



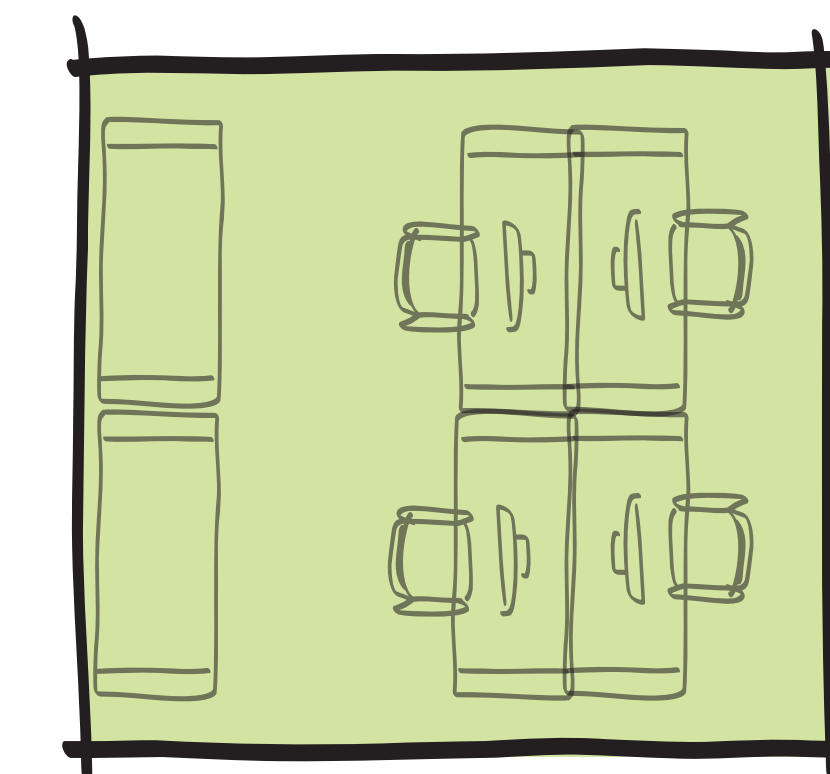
SHARED OFFICE  
160 SF



STAFF BREAK ROOM  
150 SF



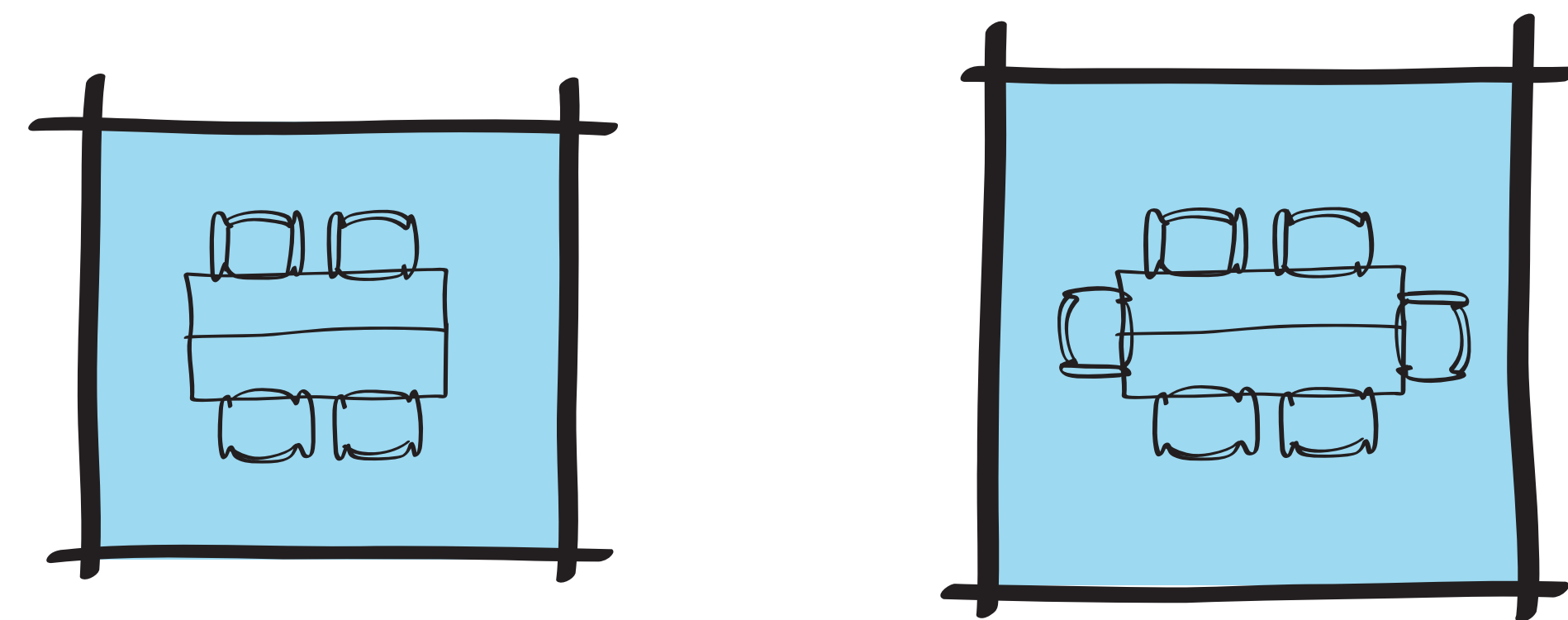
COMMON AREAS  
500 SF



PUBLIC COMPUTERS  
180 SF

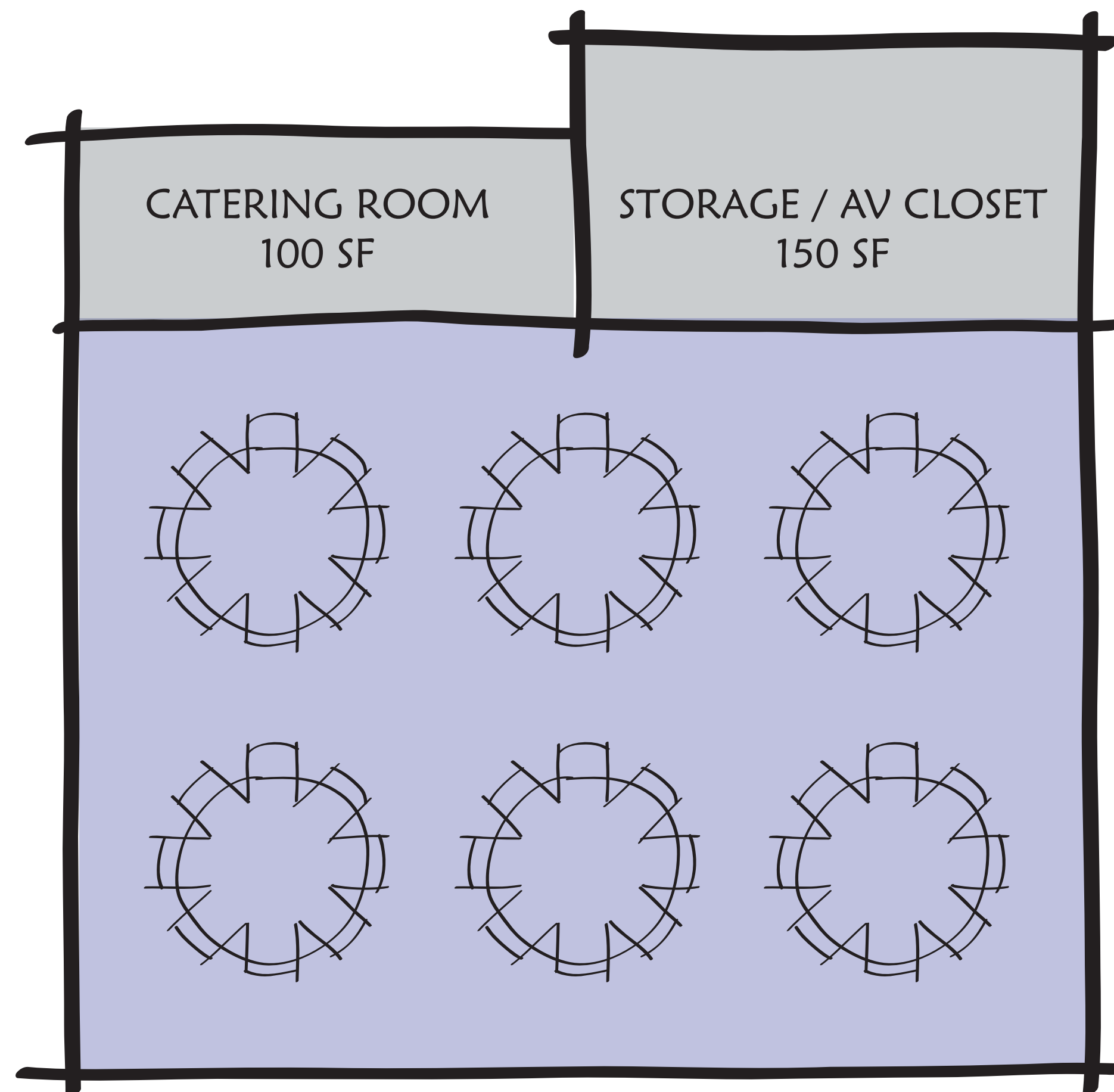


# Longboat Key Library - Core Spaces



SMALL STUDY  
120 SF

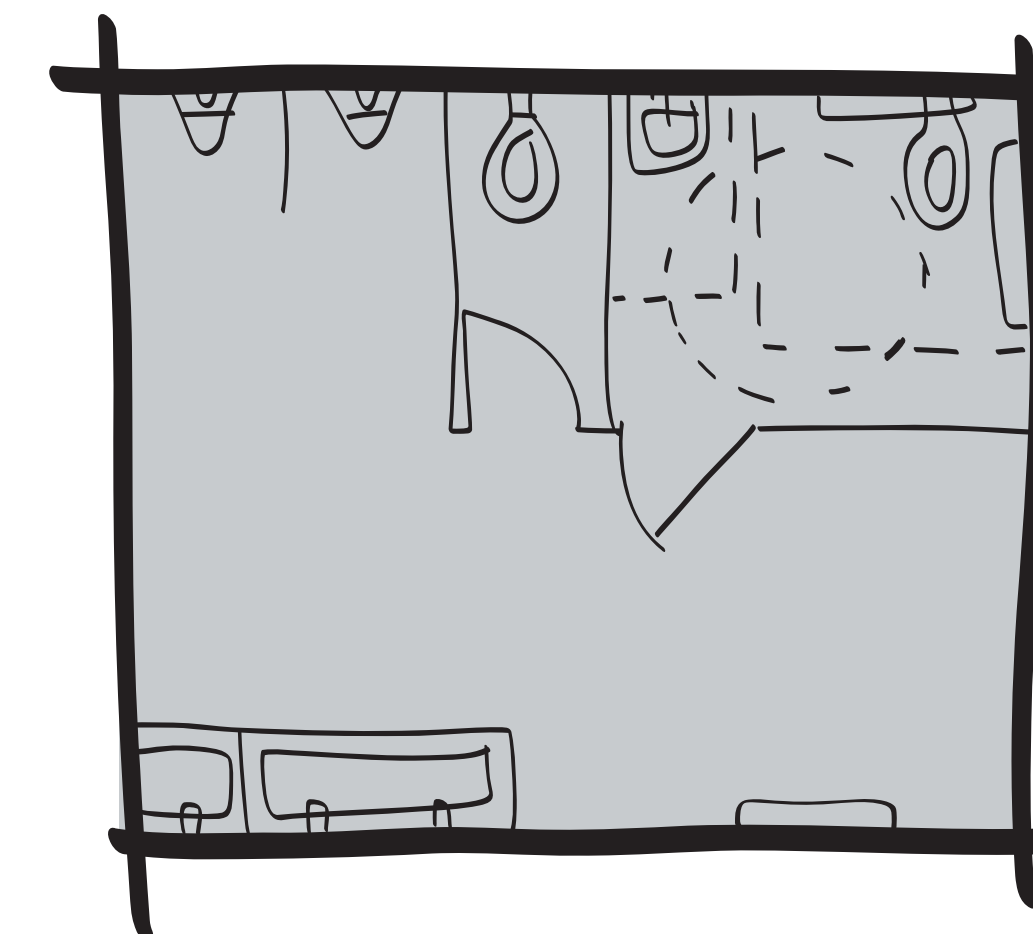
LARGE STUDY  
160 SF



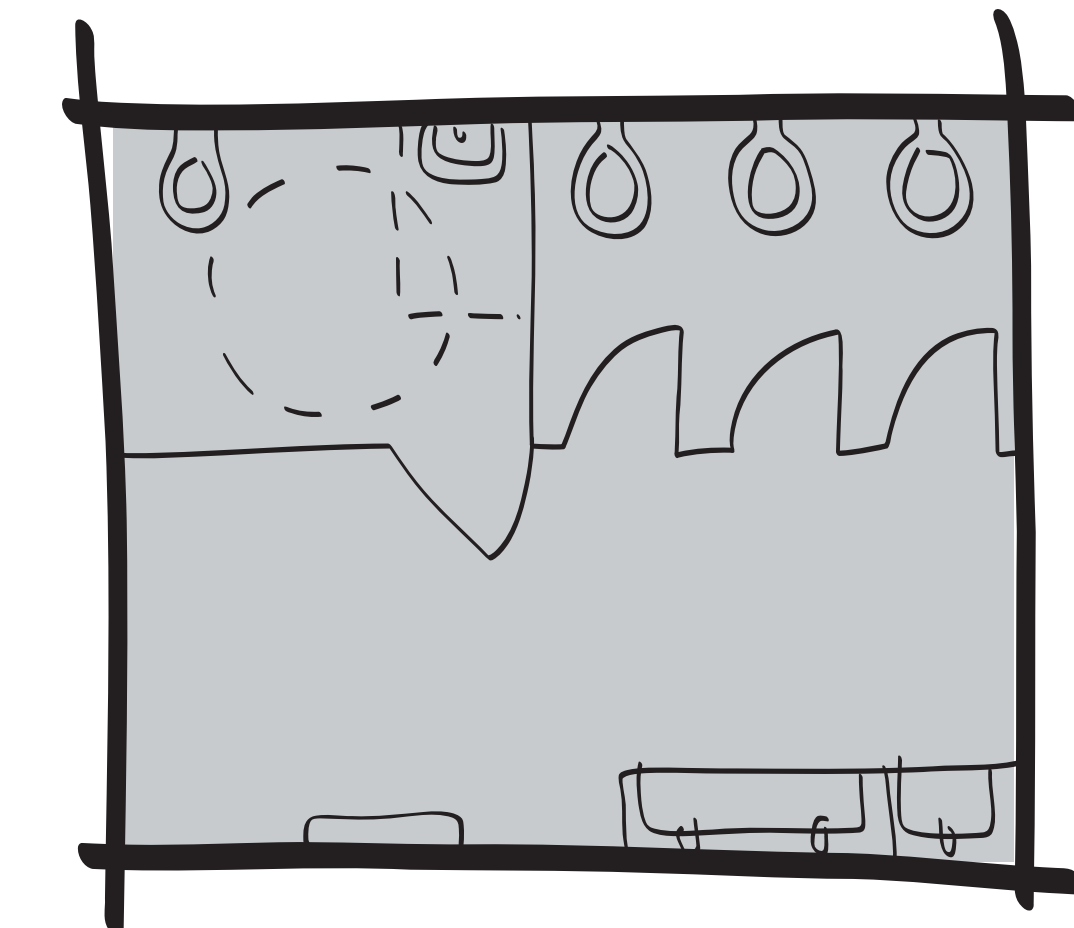
COMMUNITY MEETING ROOM A - LARGE  
800 SF

CATERING ROOM  
100 SF

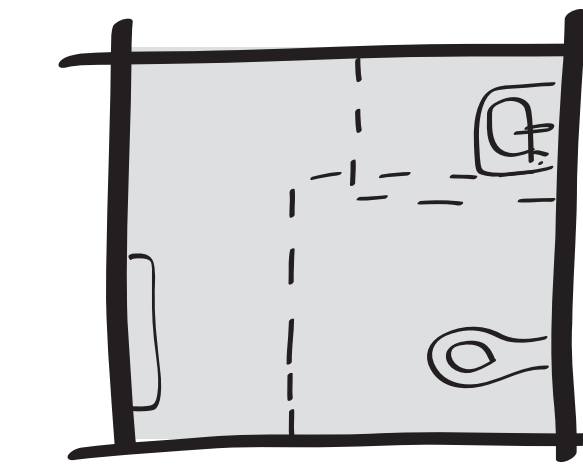
STORAGE / AV CLOSET  
150 SF



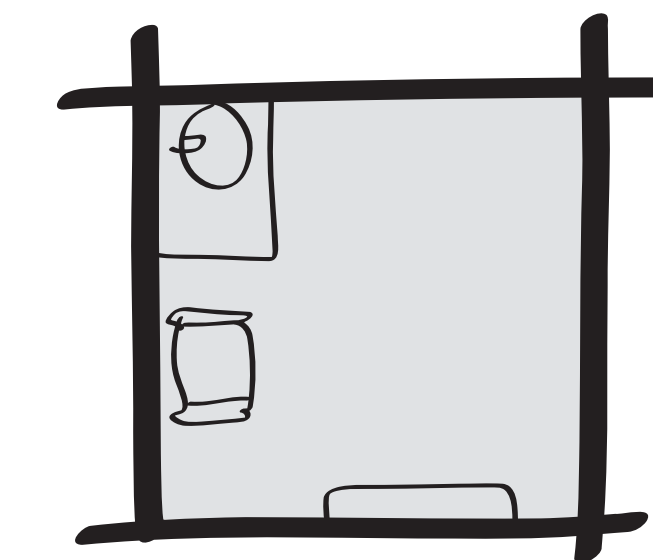
PUBLIC RESTROOMS - MEN  
250 SF



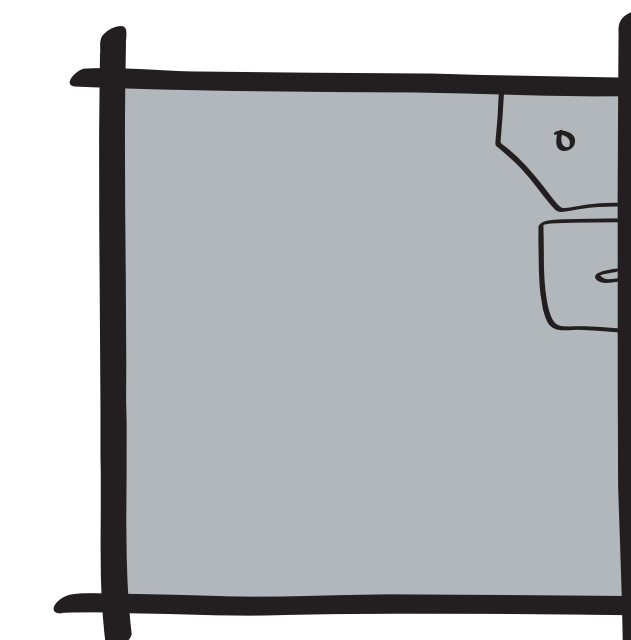
PUBLIC RESTROOMS - WOMEN  
250 SF



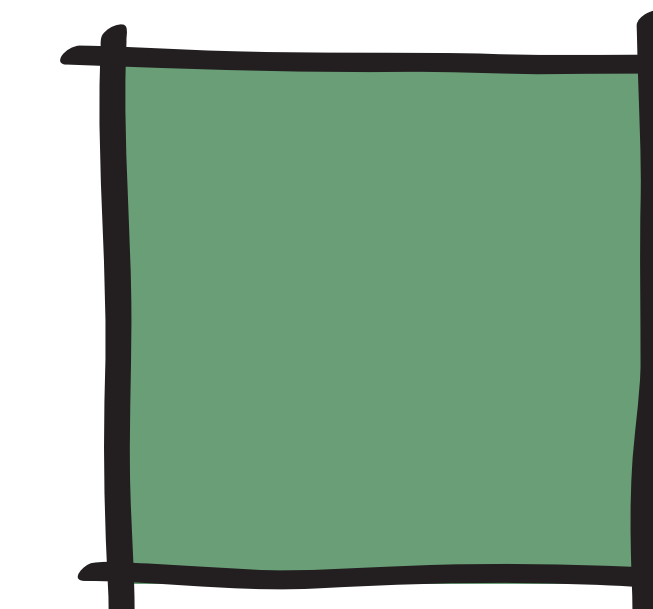
PUBLIC RESTROOMS - FAMILY  
80 SF



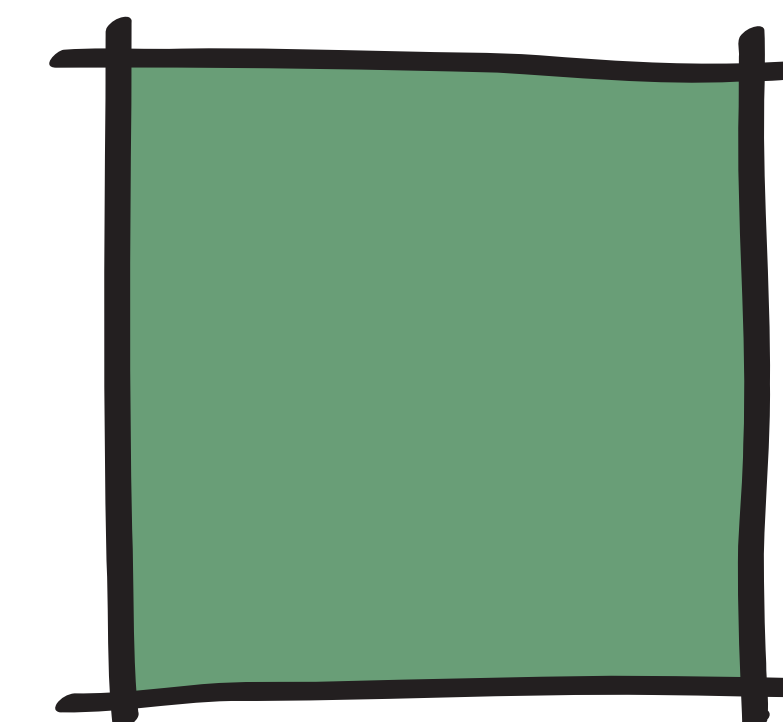
WELLNESS ROOM  
100 SF



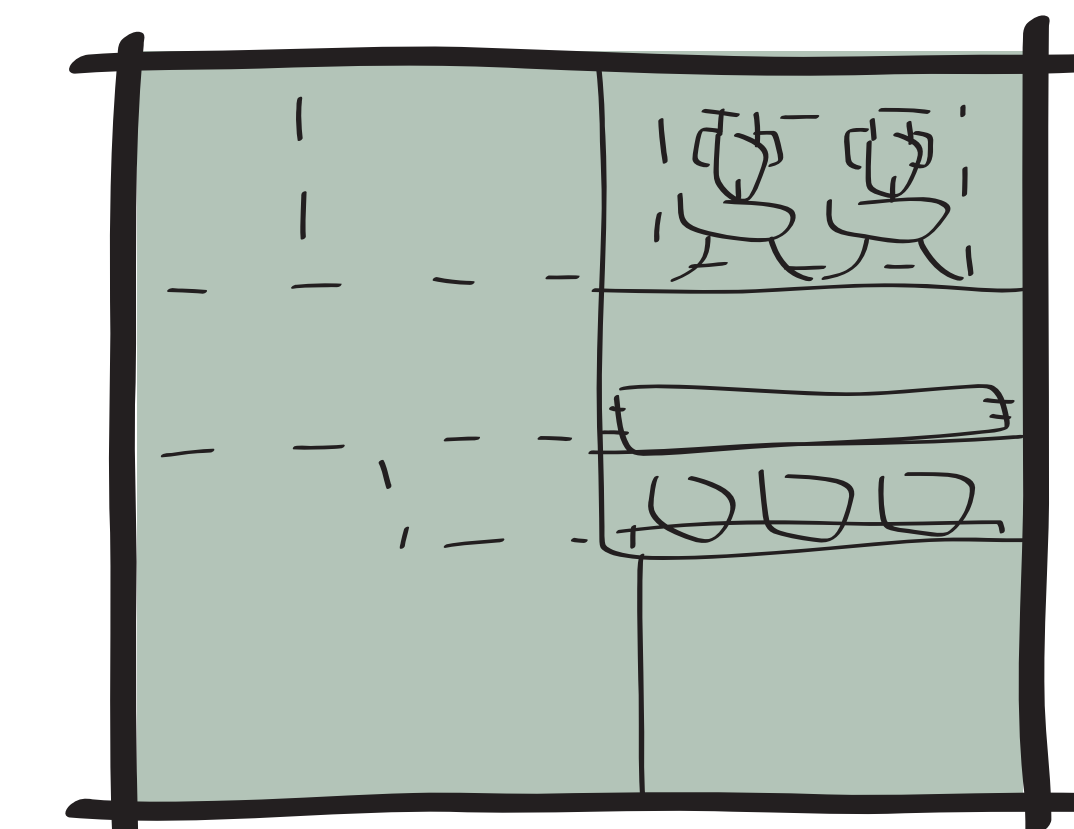
CUSTODIAL / JANITOR  
100 SF



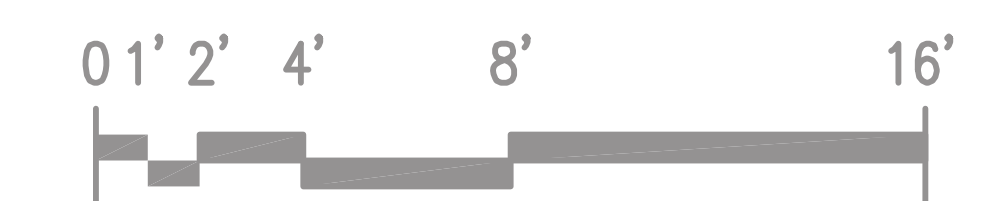
SERVER ROOM  
100 SF



ELECTRICAL ROOM  
150 SF



MECHANICAL ROOM  
250 SF



# Longboat Key Library - Core Adjacencies

