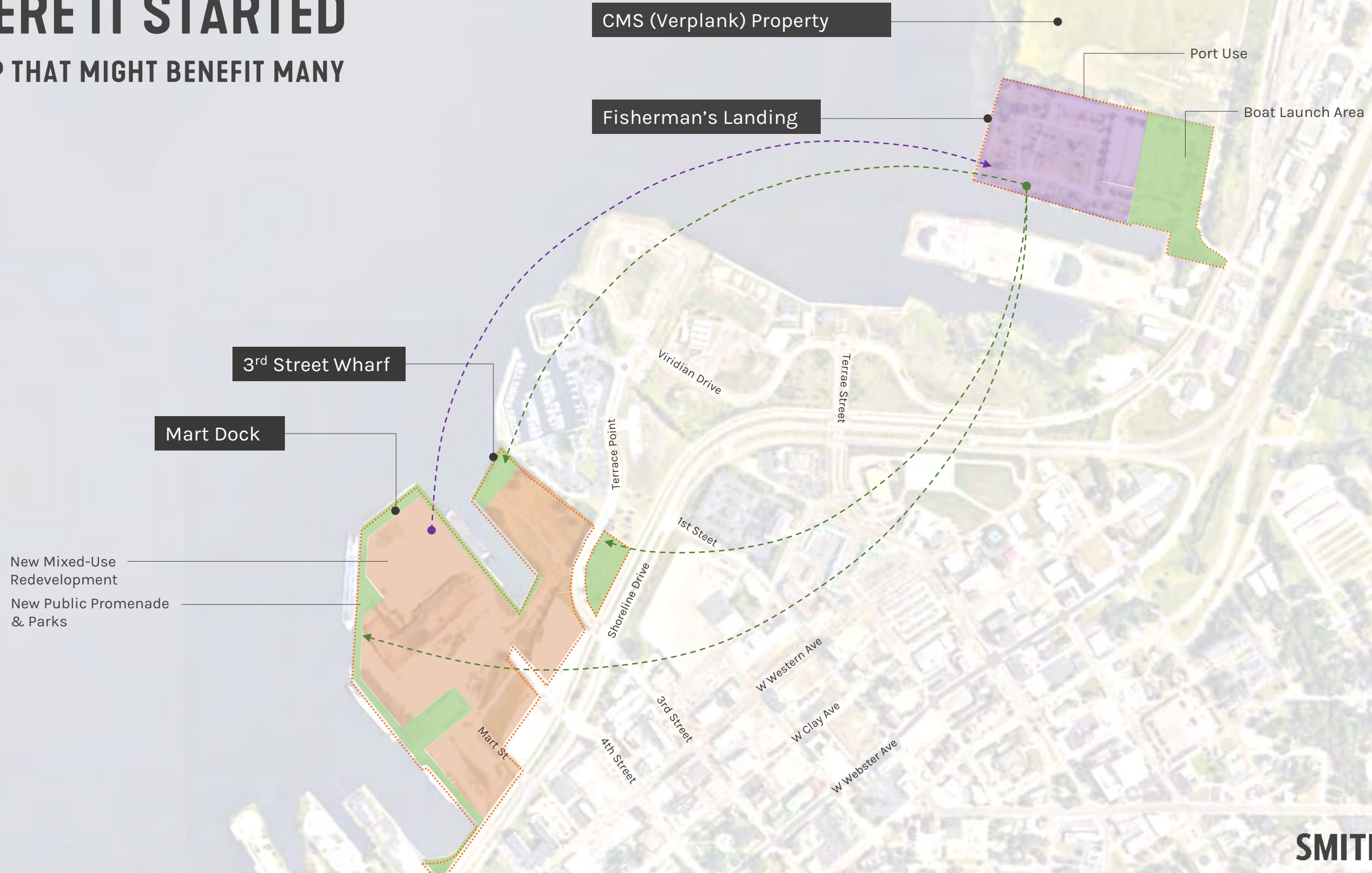


An aerial, grayscale photograph of a city street intersection. In the center is a circular tree island with a large tree. Surrounding the island are sidewalks, streetlights, and various buildings. On the left, a large building has 'DELTA HOTELS MARRIOTT' signage. On the right, a building has 'CHAMBER OF COMMERCE' signage. The sky is overcast. The title text is overlaid in the center.

MUSKEGON LAKESHORE MASTER PLAN SUMMARY

WHERE IT STARTED

A SWAP THAT MIGHT BENEFIT MANY



A SWAP WITH POTENTIAL BENEFITS

CMS (VERPLANK) SITE

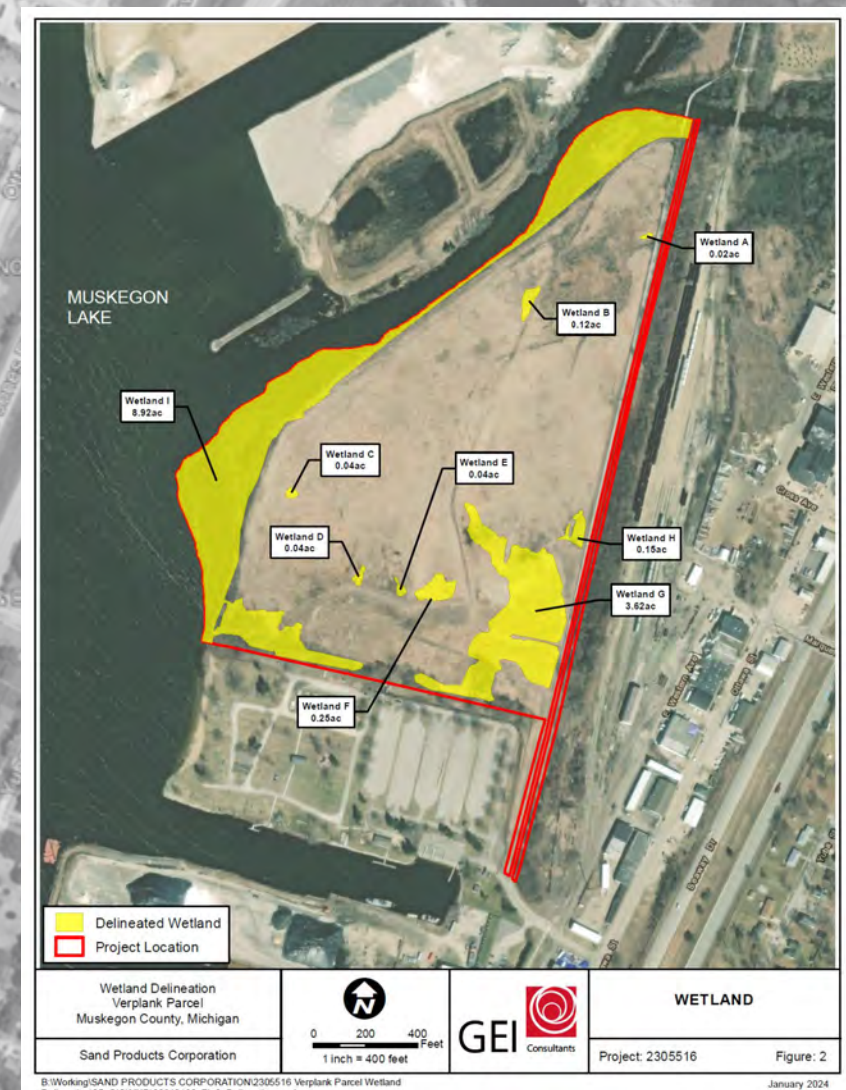
Richards Park Expansion

Port Support - 25 acres

Port Use - Flex
Depending on Need

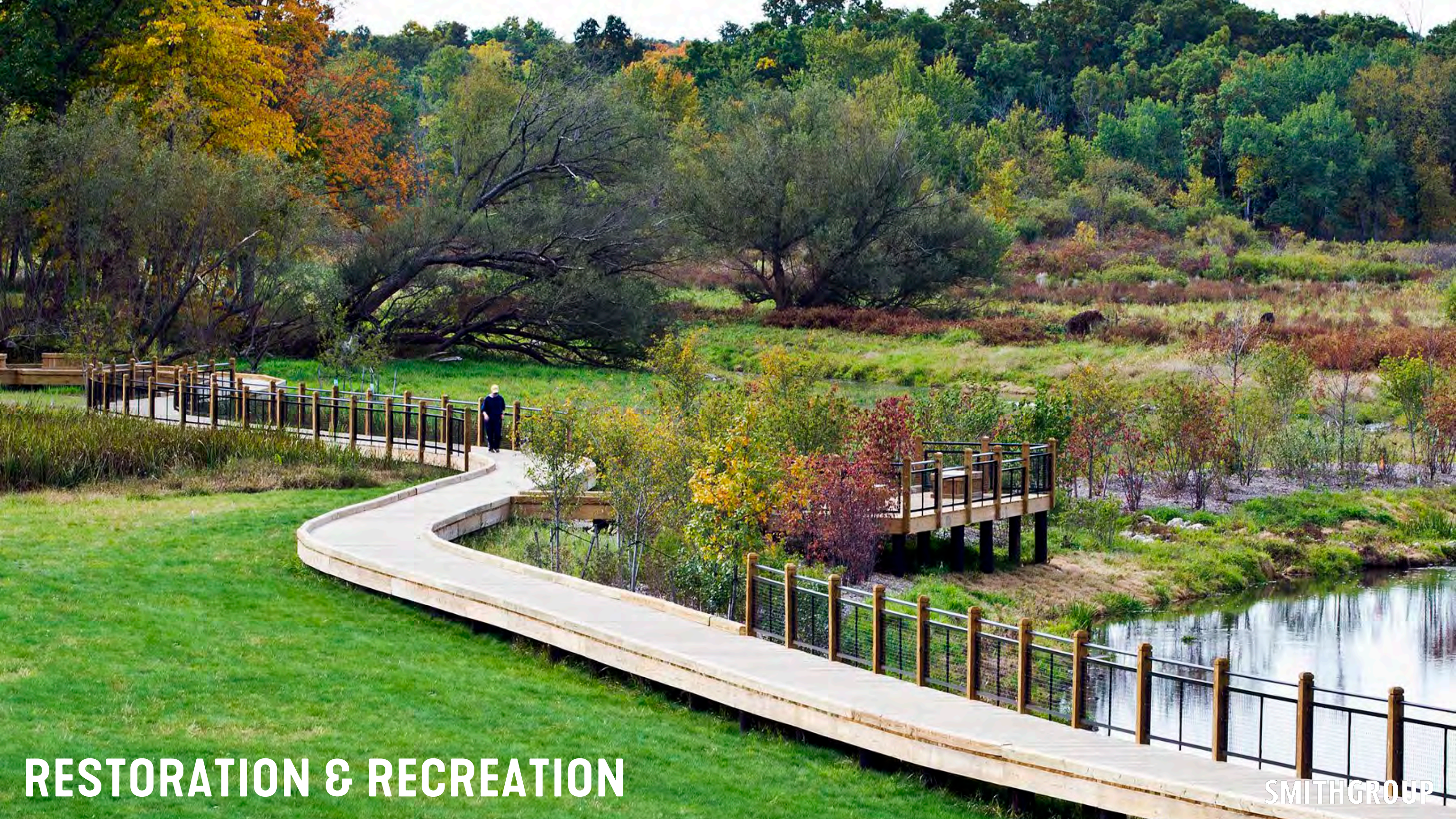
Port Use - Primary Area

Boat Launch Area



A SWAP WITH POTENTIAL BENEFITS



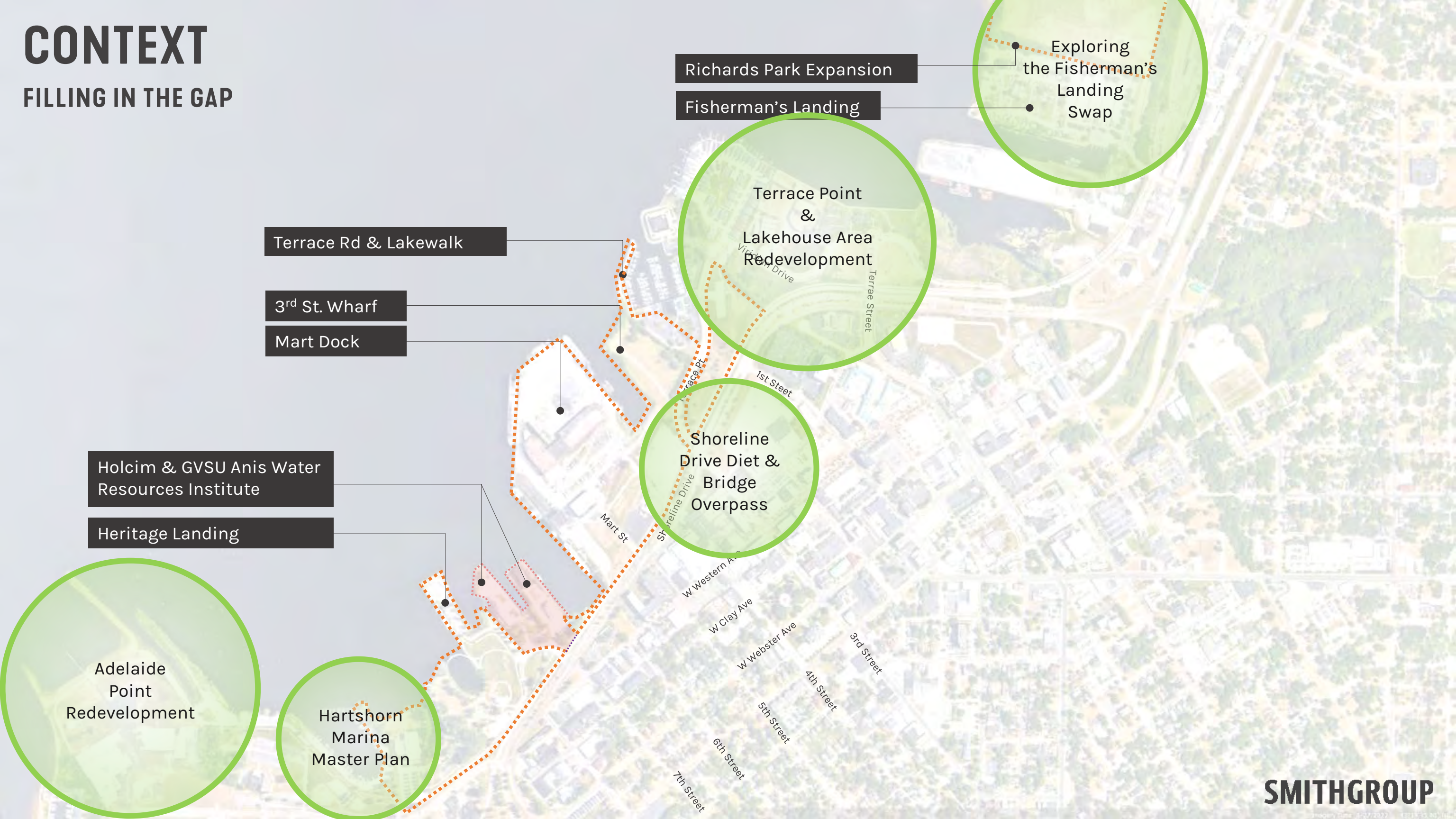


RESTORATION & RECREATION

SMITHGROUP

CONTEXT

FILLING IN THE GAP



Richards Park Expansion

Fisherman's Landing

Exploring the Fisherman's Landing Swap

Terrace Point & Lakehouse Area Redevelopment

Terrace Rd & Lakewalk

3rd St. Wharf

Mart Dock

Shoreline Drive Diet & Bridge Overpass

Holcim & GVSU Anis Water Resources Institute

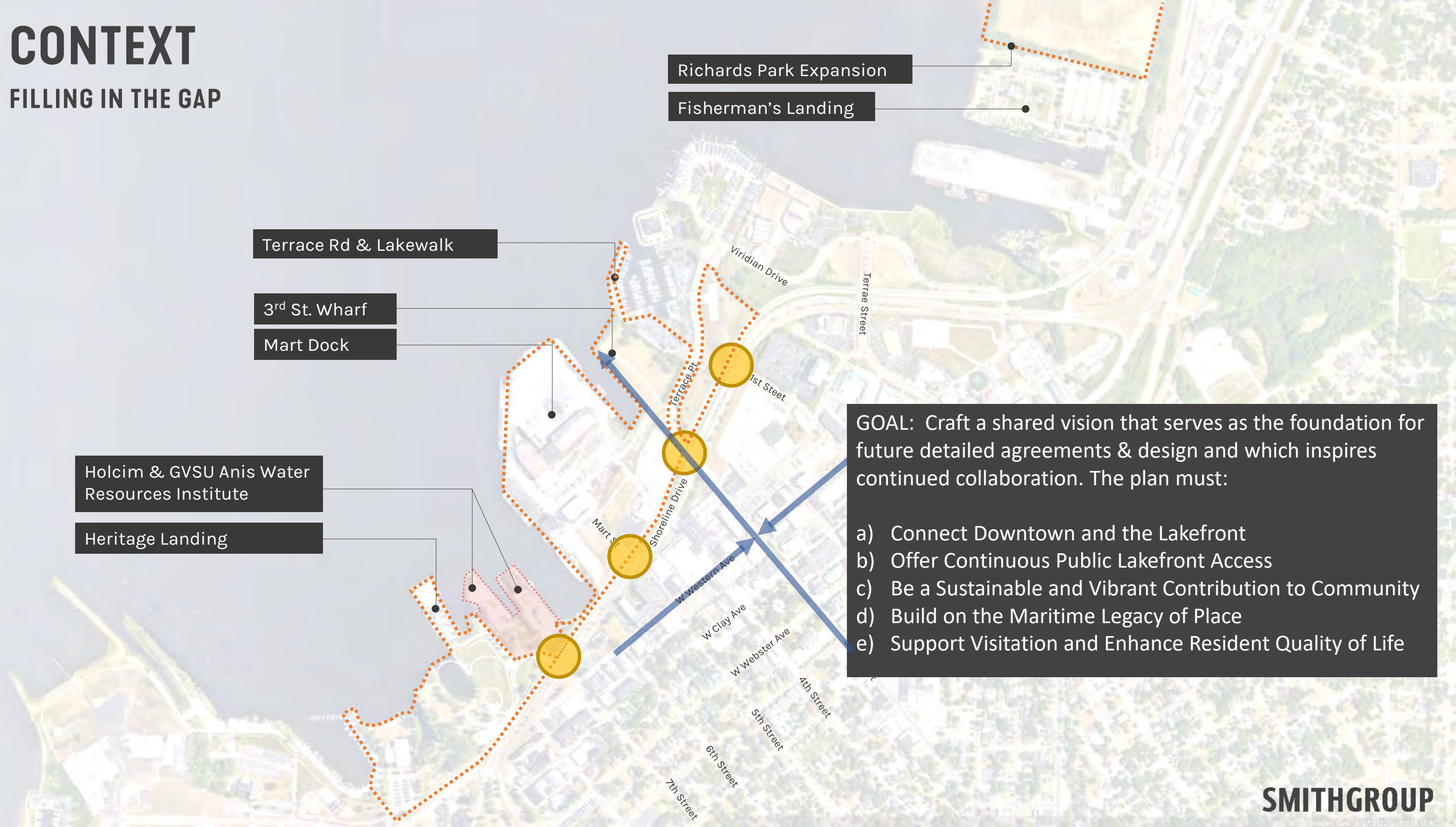
Heritage Landing

Adelaide Point Redevelopment

Hartshorn Marina Master Plan

CONTEXT

FILLING IN THE GAP



Richards Park Expansion

Fisherman's Landing

Terrace Rd & Lakewalk

3rd St. Wharf

Mart Dock

Holcim & GVSU Anis Water Resources Institute

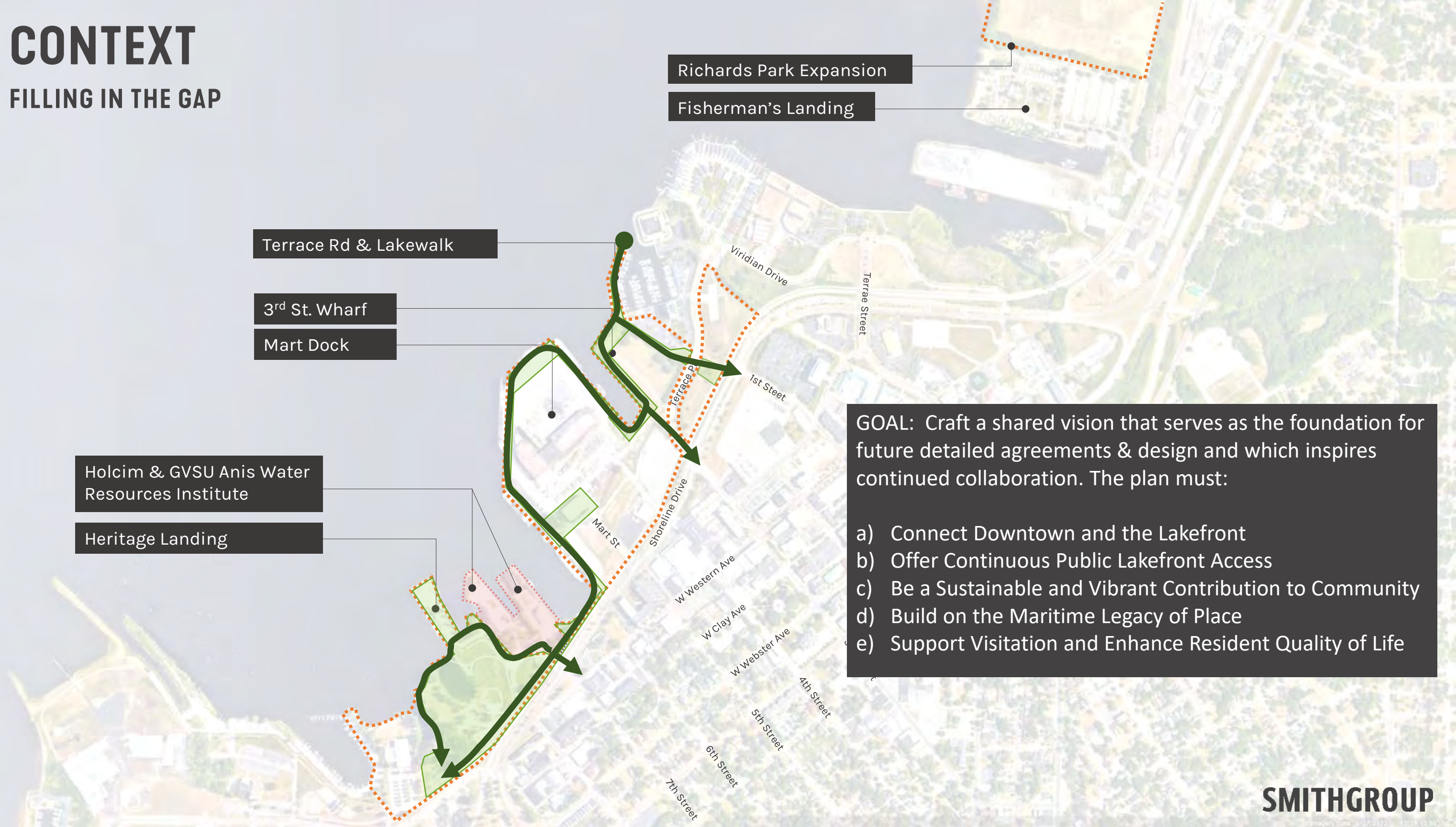
Heritage Landing

GOAL: Craft a shared vision that serves as the foundation for future detailed agreements & design and which inspires continued collaboration. The plan must:

- a) Connect Downtown and the Lakefront
- b) Offer Continuous Public Lakefront Access
- c) Be a Sustainable and Vibrant Contribution to Community
- d) Build on the Maritime Legacy of Place
- e) Support Visitation and Enhance Resident Quality of Life

CONTEXT

FILLING IN THE GAP



Richards Park Expansion

Fisherman's Landing

Terrace Rd & Lakewalk

3rd St. Wharf

Mart Dock

Holcim & GVSU Anis Water Resources Institute

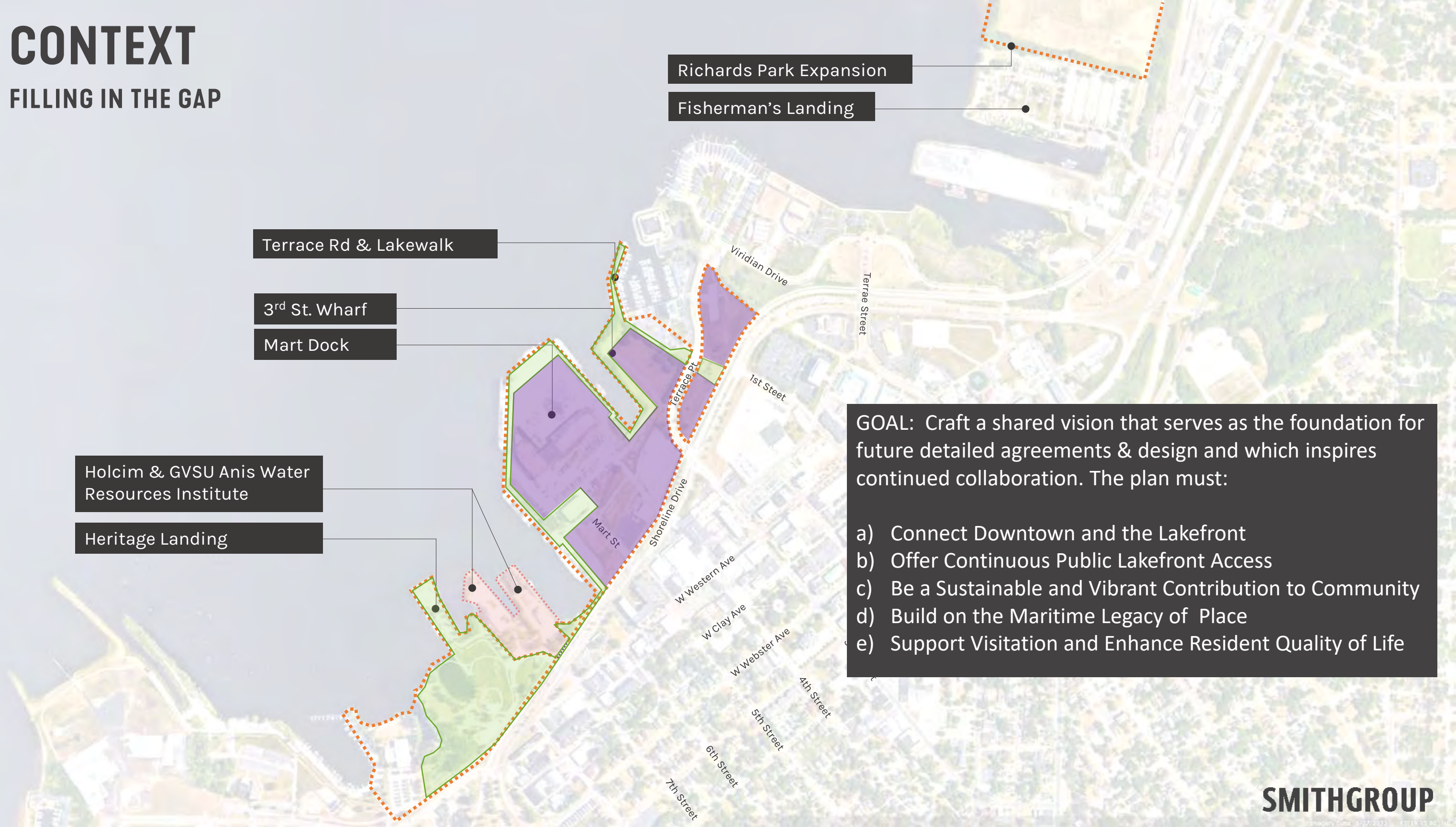
Heritage Landing

GOAL: Craft a shared vision that serves as the foundation for future detailed agreements & design and which inspires continued collaboration. The plan must:

- a) Connect Downtown and the Lakefront
- b) Offer Continuous Public Lakefront Access
- c) Be a Sustainable and Vibrant Contribution to Community
- d) Build on the Maritime Legacy of Place
- e) Support Visitation and Enhance Resident Quality of Life

CONTEXT

FILLING IN THE GAP



Richards Park Expansion

Fisherman's Landing

Terrace Rd & Lakewalk

3rd St. Wharf

Mart Dock

Holcim & GVSU Anis Water Resources Institute

Heritage Landing

GOAL: Craft a shared vision that serves as the foundation for future detailed agreements & design and which inspires continued collaboration. The plan must:

- a) Connect Downtown and the Lakefront
- b) Offer Continuous Public Lakefront Access
- c) Be a Sustainable and Vibrant Contribution to Community
- d) Build on the Maritime Legacy of Place
- e) Support Visitation and Enhance Resident Quality of Life

MART DOCK



MART DOCK



MUSKEGON LAKE

MART DOCK

A FRAMEWORK FOR COMMUNITY-ORIENTED REDEVELOPMENT



Primary Cruise Dock Landing

Neighborhood & Community Activities and Events

Continuous Public Lakefront Promenade & Muskegon Greenway

Visitor Docking & Lake Tours

3rd Street Wharf Promenade

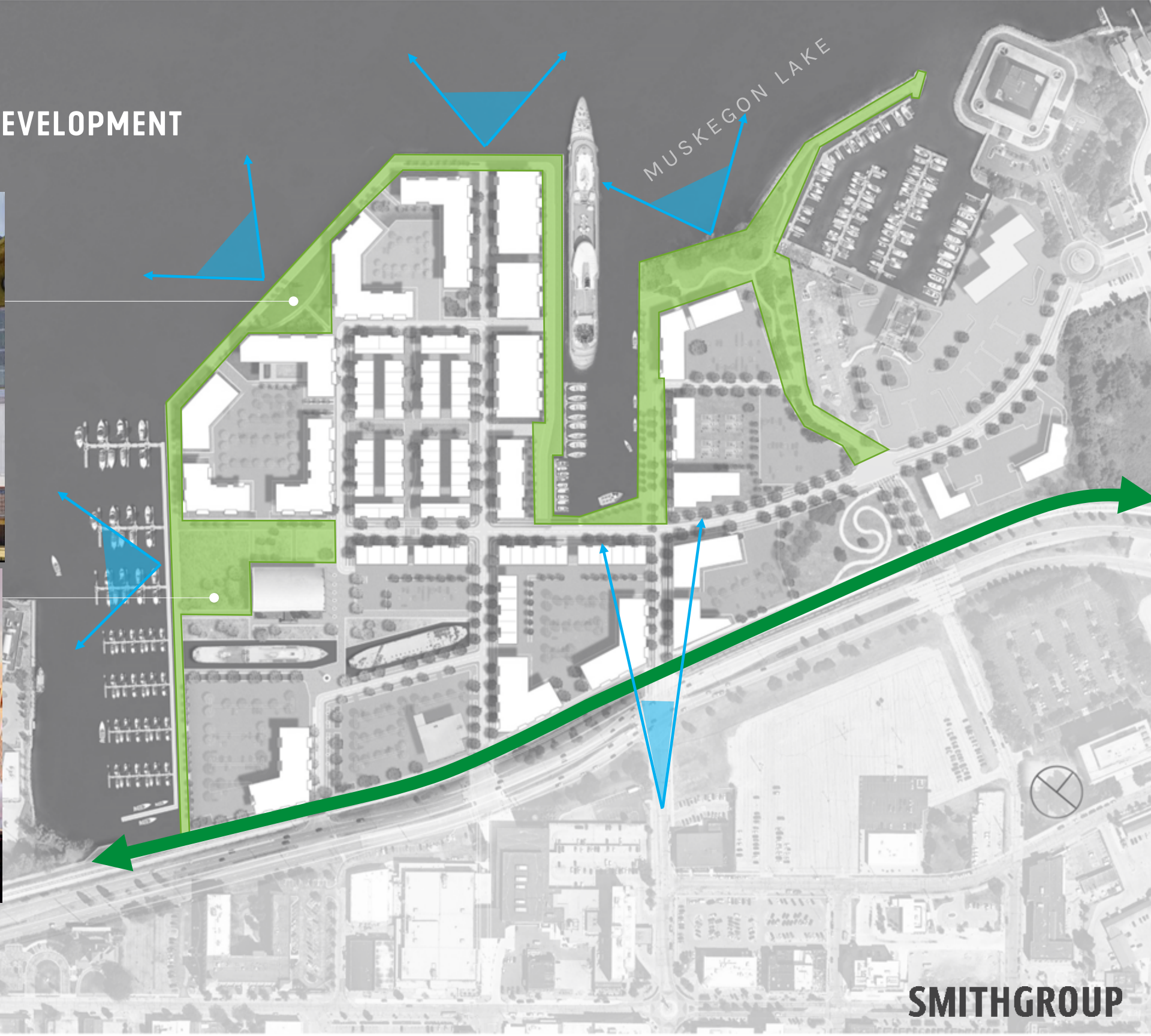
Terrace Point Reconfiguration

Historic Ships & Maritime Legacy Museum

Adaptive Reuse of Historic Auditorium

MART DOCK

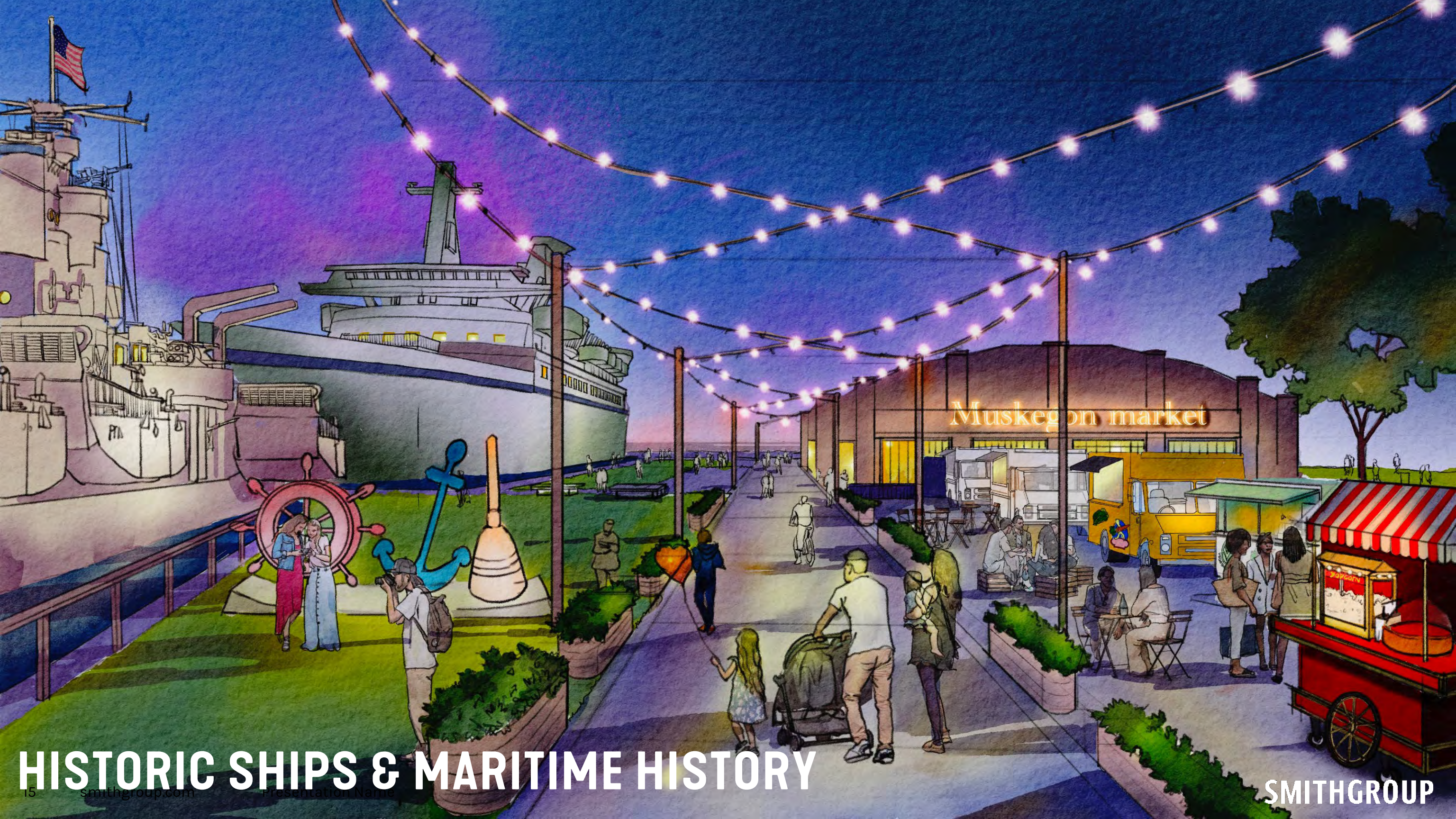
A FRAMEWORK FOR COMMUNITY-ORIENTED REDEVELOPMENT





THIRD STREET SLIP & PROMENADE

SMITHGROUP



HISTORIC SHIPS & MARITIME HISTORY

HERITAGE LANDING



HERITAGE LANDING

In process rendering



HERITAGE LANDING

AN ENGAGING, ACTIVE COMMUNITY SPACE



In process rendering

HERITAGE LANDING

AN ENGAGING, ACTIVE COMMUNITY SPACE

In process rendering



POINT PARK



NATURE PLAY



NATURE PLAY WITH A STORY





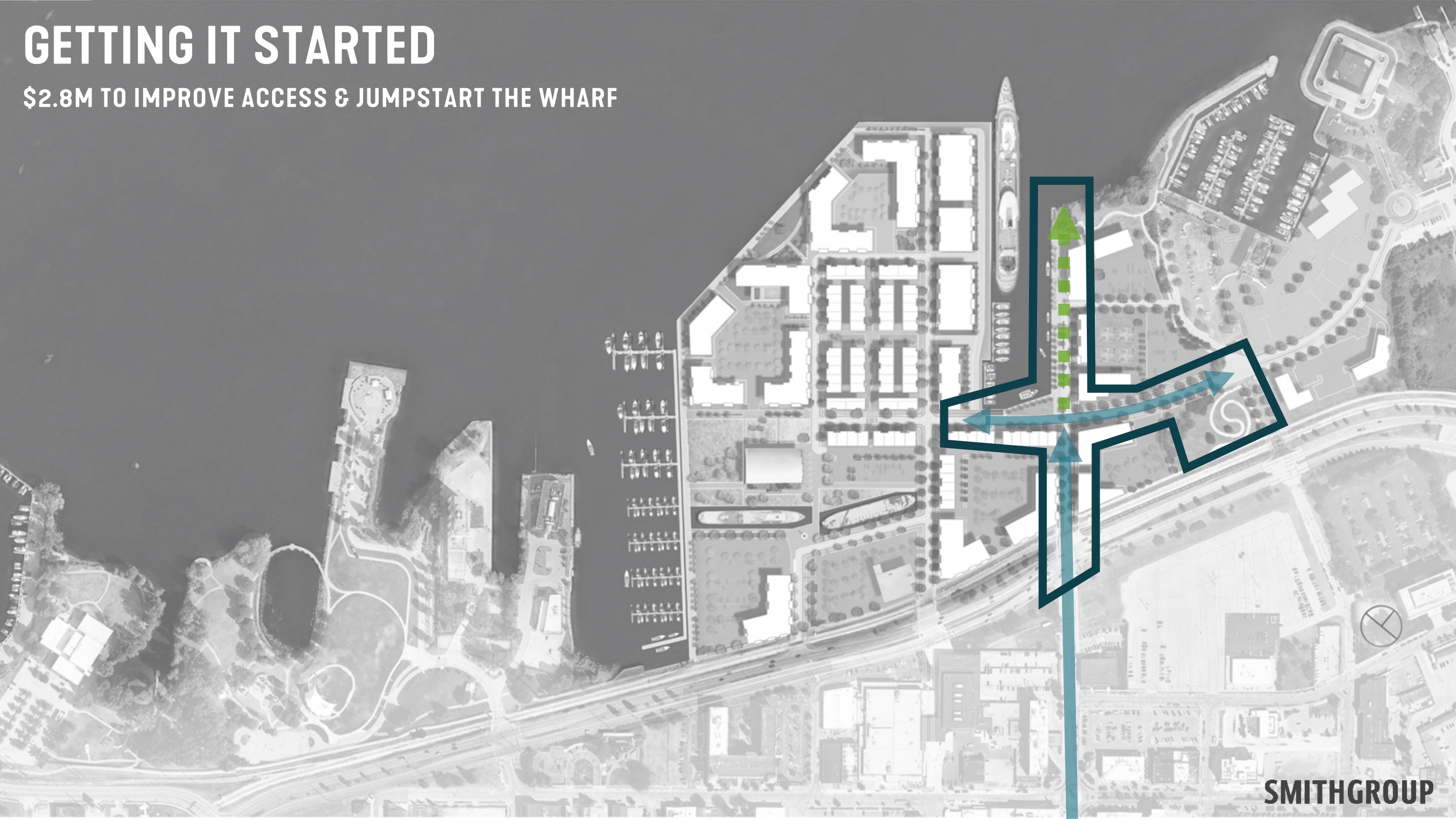
In process rendering

POINT PARK CONCESSION & BEER GARDEN

SMITHGROUP

GETTING IT STARTED

\$2.8M TO IMPROVE ACCESS & JUMPSTART THE WHARF



An aerial, grayscale photograph of a city street intersection. In the center is a large tree island with a single tree. To the left is a large multi-story building with 'DELTA HOTELS MARRIOTT' signage. To the right is a smaller building with 'CHAMBER OF COMMERCE' signage. The street has a circular pattern and several cars are visible. The sky is overcast.

THANK YOU!