



Transition Center

Pilot Program

Project Overview

Pima County & City of Tucson



Introductions

Pima County

- Steve Holmes, Deputy County Administrator

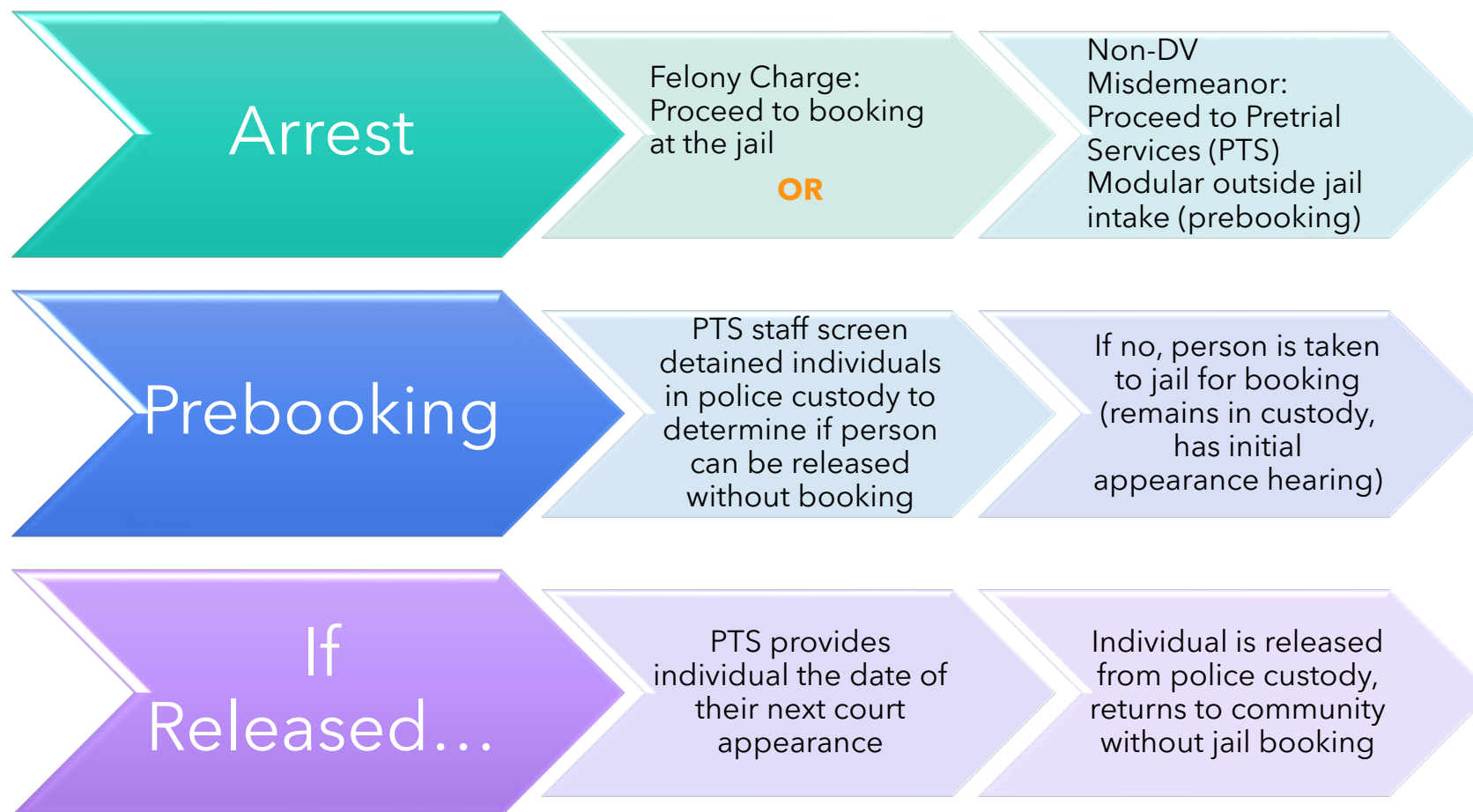
Dept. of Justice Services

- Kate Vesely, Director
- Doyle Morrison, Program Manager

City of Tucson

- Mari Vasquez

Current Arrest/Booking Process Overview



Current Process



Cons:

- Individuals may return to the location of initial arrest = violation of release conditions, additional officer time, new charges + rearrest
- May be released to the community without knowledge of services or resources available
- May be released without access to phone, transportation, or other resources



Pros:

Saves officer time (faster return to service) 15 min vs 3-4 hours

Lower jail population (non-violent, non-dangerous individuals)

Saves jail booking costs/CO time



Quick Overview of Pilot Project

- Feedback from justice system and community partners: add opportunities to connect those released from custody to services (treatment, housing, etc)
- Transition Center:
 - Not a treatment intervention
 - Conduit to resources: provides information about, and increases access to, services and opportunities that will help break the cycle of incarceration
 - Collect data to determine which interventions are the most effective
 - Measurement of success: Reducing re-arrest, increasing court appearance





Project Partners

Pima County:

- Modular lease and facility design
- DJS: Transition Center implementation and oversight; justice navigator staff

City of Tucson:

- Additional justice navigator staff
- Support with “familiar faces”

Superior Court/Pretrial Services

- Partnership/collaboration
- Process coordination

Pima County Adult Detention Complex

- Partnership/collaboration
- Process coordination

Justice System Partners: Pima County Sheriff’s Department, Tucson Police Department, Pima County Attorney’s Office, and more



Priority Population(s)

Misdemeanors:

- All jurisdictions
- Non-violent, non-dangerous
- Phase 1: those released from prebooking modular
- Phase 2: those released at Initial Appearance

Felony:

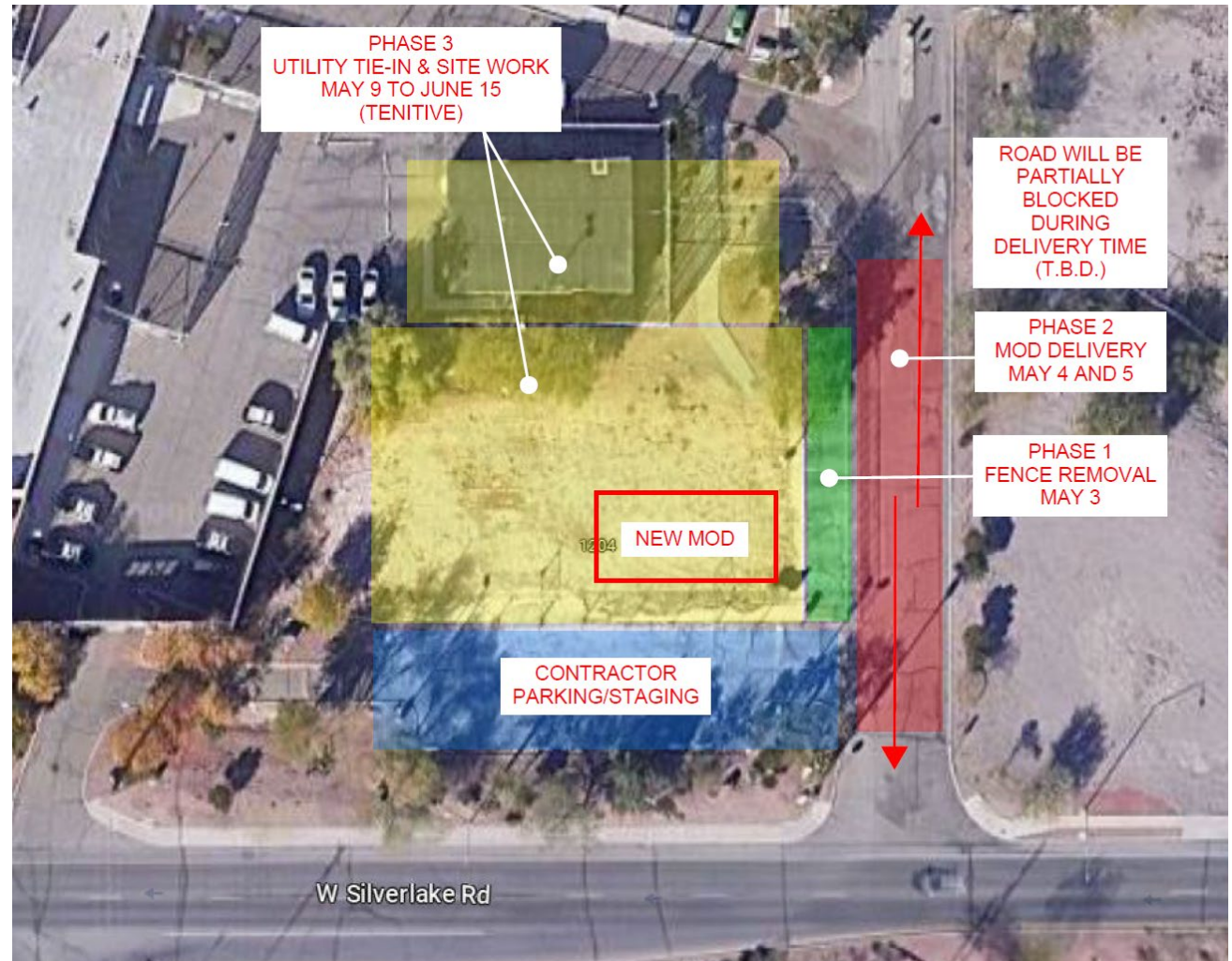
- Low-level, released from Initial Appearance (Phase 2)

“Familiar Faces”

- High system utilizers

How will it work?

- As individuals leaving prebooking modular (Pretrial Services)
- Routed through the Transition Center post-custody
- Justice Navigators will attempt to engage with individuals to determine needs and willingness to go to services (treatment, housing, etc)
- Will utilize incentives to encourage participation (cell phone, resource bags, etc)
- When available, staff may transport to approved drop-off sites
- Follow up to ensure participants have plan to get to court hearings



Transition Center Function & Services

Information & Accessibility

- Ensuring released individuals understand release conditions and expectations
- Develop plan for individual to attend their next court appearance
- Provide resources and incentives to promote court appearance and access to services + community supervision

Referral & Connection

- Develop list of resources, providers, and services for individuals to be referred to
- Assist individuals to navigate enrollment and how to access services
- “Warm hand off” and drop off to services

Support & Encouragement

- Staff will have lived experience in the justice system, can provide encouragement

Transition Center – What it is, and is not:

What It is:

- **Informational** - about justice system processes, what to expect about the court process, and who to talk to if they have questions (i.e. Public Defender's Office, Pretrial Services)
- **Connective** - how to get enrolled in services, treatment, access housing, and other resources
- **Supportive** - provide encouragement and motivation, to avoid justice system interaction, to resolve court cases, and participate in services

What it is not:

- **A treatment program**: Transition Center will rely on existing treatment for participant services, and will work to refer (and possibly transport) individuals to these resources
- **Community supervision**: Justice Navigators will not supervise participants, enforce release conditions, or report on non-compliance to PTS or police (unless risk of dangerousness is present)
- **Mandatory participation**: individuals cannot be forced to participate

Transition Center Timeline

1

MAY 2023

Deliver modular building
Post Justice Navigator positions
Design program parameters

2

JUNE 2023

Finish modular construction
Justice Navigators begin work/training
Develop provider referral list

3

JULY 2023

Identify preferred providers, refine referral processes
Launch transportation services from jail to services providers

4

FALL 2023

Begin evaluation of pilot program effectiveness
Formalize procedures
Develop participant resource manual

5

Summer 2024

Assess pilot program for full implementation
Formal project evaluation
Possible expansion

What do we need from you?

- Let us know if we can refer to you!
 - Complete survey to let us know what services you provide, who can be referred, and your processes
 - [Click here for link](#)
- Interest in more formal partnerships for potential grants and other linked programs
 - Would you be willing to do a letter of support for grants?
Please email JusticeServices@pima.gov

