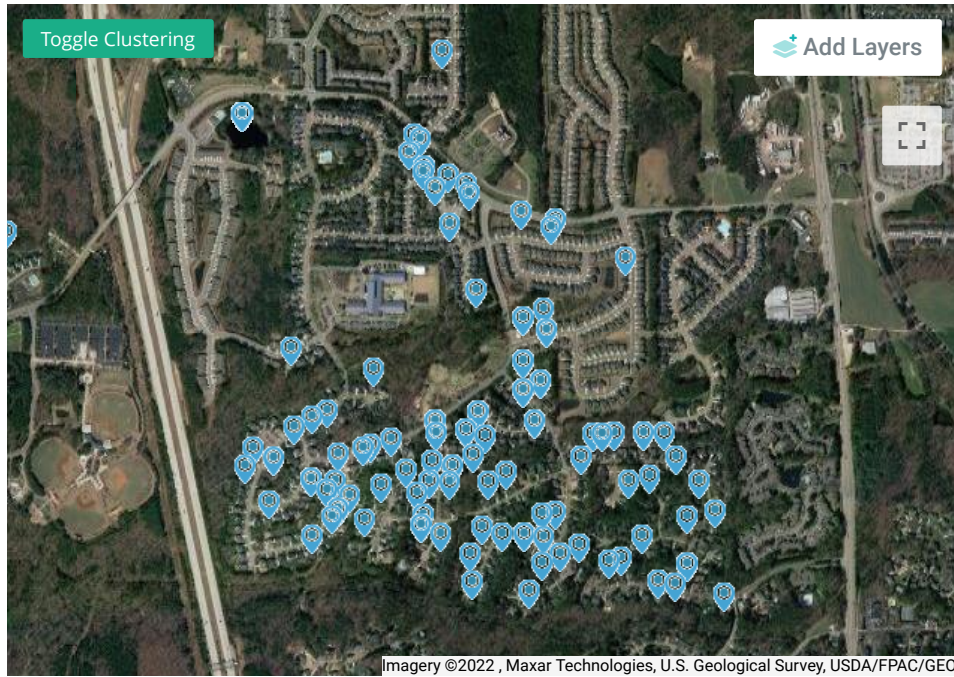


Sears Farm Road

Participant Map



Project Engagement

VIEWS

381

RESPONSES

1,884

SUBSCRIBERS

116

PARTICIPANTS

135

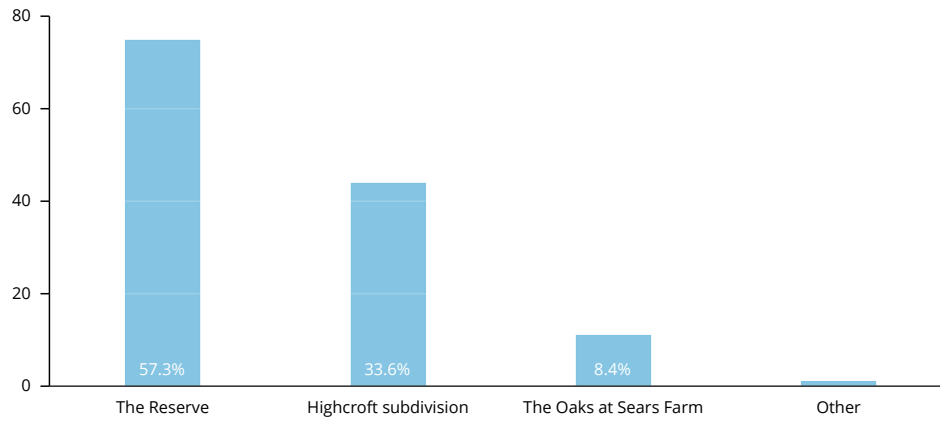
COMMENTS

139

Tell us a little bit about yourself and your proximity to our project.

No data to display...

How would you classify your neighborhood?



Poll Questions 'Other' Responses:

Westvale

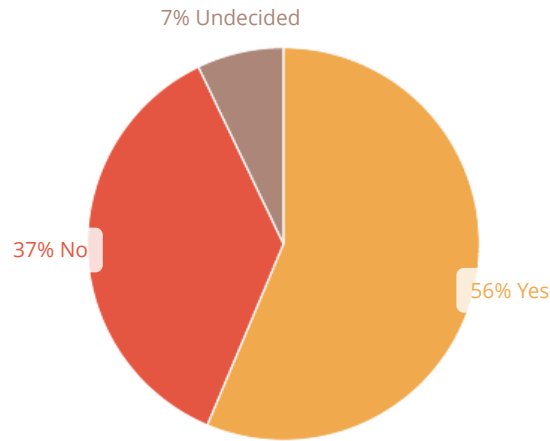
15 days ago

* Let us know how satisfied you are with the following aspects of Sears Farm Road.

	Dissatisfied	Somewhat Dissatisfied	Neutral	Somewhat Satisfied	Satisfied
Vehicle speeds	25% Dissatisfied	28% Somewhat Dissatisfied	18% Neutral	8% Somewhat Satisfied	22% Satisfied
Volume of traffic	5% Dissatisfied	10% Somewhat Dissatisfied	42% Neutral	15% Somewhat Satisfied	29% Satisfied
On-street parking	11% Dissatisfied	14% Somewhat Dissatisfied	32% Neutral	7% Somewhat Satisfied	36% Satisfied
Motorist safety	9% Dissatisfied	15% Somewhat Dissatisfied	20% Neutral	14% Somewhat Satisfied	42% Satisfied
Pedestrian safety	21% Dissatisfied	25% Somewhat Dissatisfied	16% Neutral	9% Somewhat Satisfied	30% Satisfied
Cyclist safety	20% Dissatisfied	19% Somewhat Dissatisfied	25% Neutral	8% Somewhat Satisfied	28% Satisfied

130 respondents

* Do you think Cary should provide measures to calm vehicle traffic along this corridor to improve mobility for pedestrians and cyclists?



126 respondents

What do you think of the speed humps, specifically?

44%	Love 'em!	55 ✓
29%	NO speed humps!	37 ✓
27%	Good idea, but would like to discuss the locations and/or number	34 ✓

126 Respondents

Please provide some input on treatment for the dedicated bike lanes. (select multiple options)

70%	Pavement markings only, even if that means drivers are less likely to follow the lines.	81 ✓
17%	Pavement markings with vertical delineator posts.	19 ✓
16%	Other	18 ✓
13%	Pavement markings with a subtle physical reinforcement, such as the Zicla Zebra (www.zicla.com)	15 ✓

115 Respondents

Let us know what you think of the striping through the intersections.

38%	I think the narrow travel lanes with separated bike lanes are a great way to support vehicles and cyclists.	46 ✓
27%	I don't like the changes at all	33 ✓
17%	There needs to be more focus on pedestrians and less on bike lanes.	21 ✓
17%	Bike lanes are fine, but this design goes too far in restricting traffic.	21 ✓

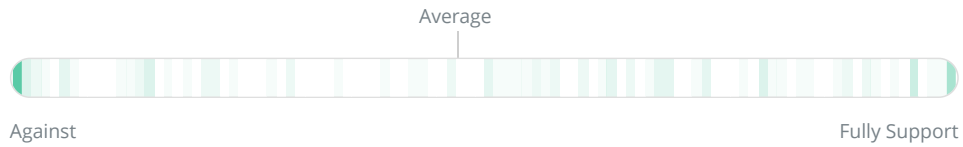
121 Respondents

What do you think of the median proposed at Edgemore?

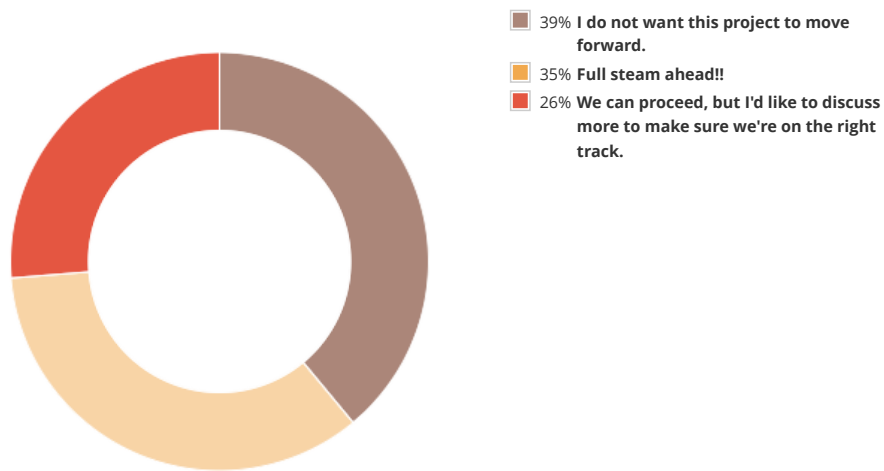
55%	I am against this median	65 ✓
42%	I support this design	50 ✓
3%	Other	4 ✓

119 Respondents

* How supportive of the Concept Design Plan are you?



* How would you like Cary to proceed with this project?



118 respondents

* What additional communication on this project would you prefer?

57%	Please email updates to our HOA.	67 ✓
23%	I will review the updates on Cary's Traffic Calming webpage.	27 ✓
15%	Please host a public meeting.	18 ✓
5%	I don't need to be kept in the loop.	6 ✓

118 Respondents

Please provide us with any additional feedback you have.

