

FY26 Adopted Total All Funds Budget Cost Summary

FUNDS	FY26 Adopted Budget	% of Total Budget	Full-Time Equivalent Positions (FTEs)
GENERAL FUND (By Department)			
City Attorney	\$ 2,063,680	0.64%	9.00
City Clerk	951,360	0.30%	8.00
City Commission	735,680	0.23%	5.00
City Manager	2,082,570	0.65%	10.75
Code Enforcement	1,087,910	0.34%	11.00
Communications	1,336,990	0.42%	11.00
Economic Development	1,100,600	0.34%	5.00
Emergency Management	524,630	0.16%	3.00
Emergency Medical Services*	15,072,480	4.68%	0.00
Finance	3,284,230	1.02%	22.00
Facilities Maintenance	8,035,320	2.50%	16.50
Human Resources	1,934,070	0.60%	14.00
Information Technology	5,042,310	1.57%	21.00
Parks & Recreation	8,075,120	2.51%	61.25
Planning & Zoning	2,053,940	0.64%	16.00
Police	39,877,430	12.38%	212.10
Social Services	745,710	0.23%	6.00
Non-Departmental	1,862,510	0.58%	0.00
Sub-total	\$ 95,866,540	29.77%	431.60
SPECIAL REVENUE FUNDS - DISTRICT			
Fire Rescue District	\$ 18,788,830	5.84%	164.00
Road & Drainage District	28,848,880	8.96%	110.00
Solid Waste District	16,096,300	5.00%	53.50
Sub-total	\$ 63,734,010	19.79%	327.50
SPECIAL REVENUE FUNDS - OTHER			
Building Fund	\$ 9,528,770	2.96%	48.00
Fleet Maintenance	8,967,880	2.79%	22.00
Inspector Education	45,000	0.01%	0.00
Law Enforcement Trust	7,000	0.00%	0.00
Police Education	16,000	0.00%	0.00
Opioid Settlements	90,000	0.03%	0.00
Tree Fund	4,741,120	1.47%	9.00
Warm Mineral Springs	1,488,640	0.46%	11.46
Fire Impact Fee	1,909,380	0.59%	0.00
General Government Impact Fee	3,000,000	0.93%	0.00
Law Enforcement Impact Fee	1,455,790	0.45%	0.00
Parks & Recreation Impact Fee	3,400,000	1.06%	0.00
Solid Waste Impact Fee	1,605,940	0.50%	0.00
Transportation Impact Fee	3,197,900	0.99%	0.00
Sub-total	\$ 39,453,420	12.25%	90.46
DEBT SERVICE FUND			
Road Reconstruction Bond Debt	\$ 2,518,400	0.78%	0.00
CAPITAL FUNDS			
Surtax	\$ 21,078,690	6.55%	0.00
R&R - General Fund	1,260,040	0.39%	0.00
R&R - Road and Drainage District	2,225,500	0.69%	0.00
R&R - Fire Rescue District	805,280	0.25%	0.00
R&R - Solid Waste District	2,540,000	0.79%	0.00
R&R - Fleet	15,000	0.00%	0.00
Sub-total	\$ 27,924,510	8.67%	0.00
ENTERPRISE FUNDS			
Utilities	\$ 63,608,650	19.75%	114.50
Water Capacity Fee	50,000	0.02%	0.00
Sewer Capacity Fee	3,018,500	0.94%	0.00
Sub-total	\$ 66,677,150	20.71%	114.50
INTERNAL SERVICE FUNDS			
Employee Benefit Fund	\$ 1,432,560	0.44%	0.00
Self-Insurance Medical Fund	19,317,220	6.00%	0.00
Self-Insurance Risk Fund	5,067,110	1.57%	0.00
Sub-total	\$ 25,816,890	8.02%	0.00
**TOTAL CITY BUDGET	\$ 321,990,920	100.00%	964.06

*Emergency Medical Services authorized positions are shown in the Fire Rescue District.
 **Totals exclude transfers and reserves.



Citizen's Guide to the Fiscal Year (FY) 2026 Budget

2025 City Commission

Phil Stokes Mayor District Seat 5	Pete Emrich Vice Mayor District Seat 4
Demetrius Petrow Commissioner District Seat 1	Barbara Langdon Commissioner District Seat 2
David Duval Commissioner District Seat 3	

Charter Offices

A. Jerome Fletcher II City Manager	
Michael Golen Interim City Attorney	Heather Faust City Clerk

Vision
 An innovative, friendly, engaging, and sustainable community where residents, businesses, and visitors flourish.

Mission
 To provide exceptional service to our entire community for the continuous enrichment of quality of life through transparency, engagement and respect.

Values
 Accountability | Integrity | Customer Service
 Teamwork | Empowered Employees
 Diversity | Innovation

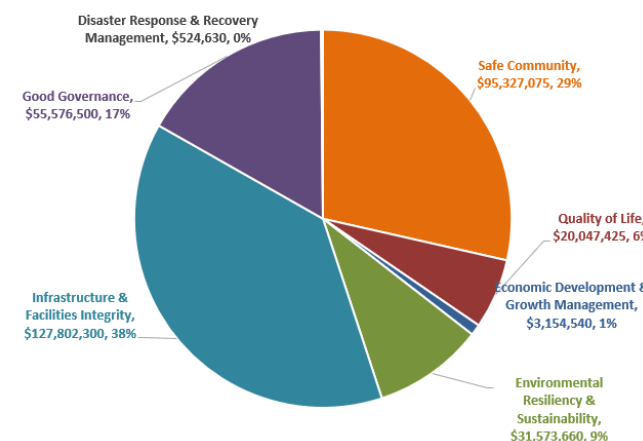
Commissioners' Strategic Pillars



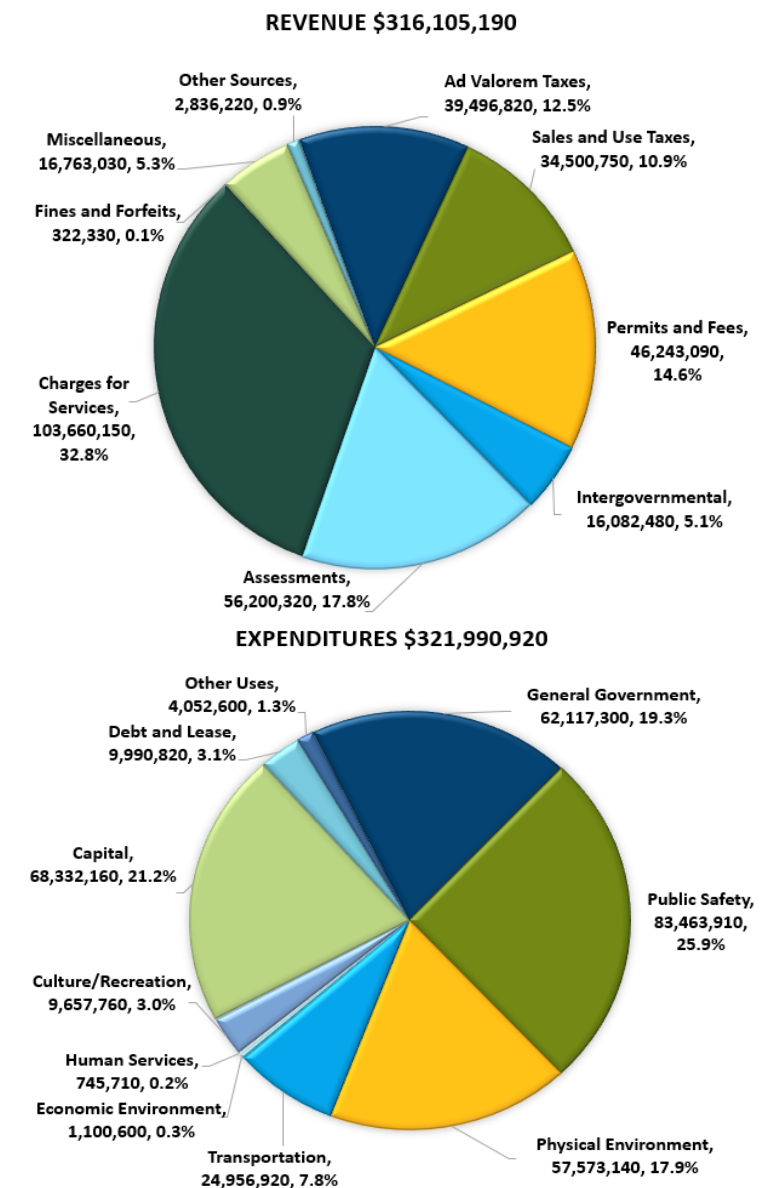
The City of North Port has made a commitment to be transparent with regards to the goals that it sets and the measurement of progress towards them. Within the Strategic Vision Plan, there are 34 established Priorities and 92 Key Success Indicators.

To stay informed about the status of Strategic Plan indicators and view department performance, visit NorthPortFL.gov/Transparency to access the City's performance dashboards. The data is regularly updated—monthly, quarterly, and annually—using both internal and external data sources.

FY26 Adopted Total All Funds Budget by Strategic Pillar



FY26 Adopted Total All Funds Revenue & Expenditures



The City of North Port has been the recipient of the Government Finance Officers Association's Distinguished Budget Presentation Award for 18 consecutive years. This award reflects the commitment of the governing body and staff to meeting the highest principles of governmental budgeting.

GOVERNMENT FINANCE OFFICERS ASSOCIATION
Distinguished Budget Presentation Award
 PRESENTED TO
City of North Port Florida
 For the Fiscal Year Beginning
 October 01, 2024
Chaitoph P. Morrill
 Executive Director

Where Do Your Property Taxes Go?

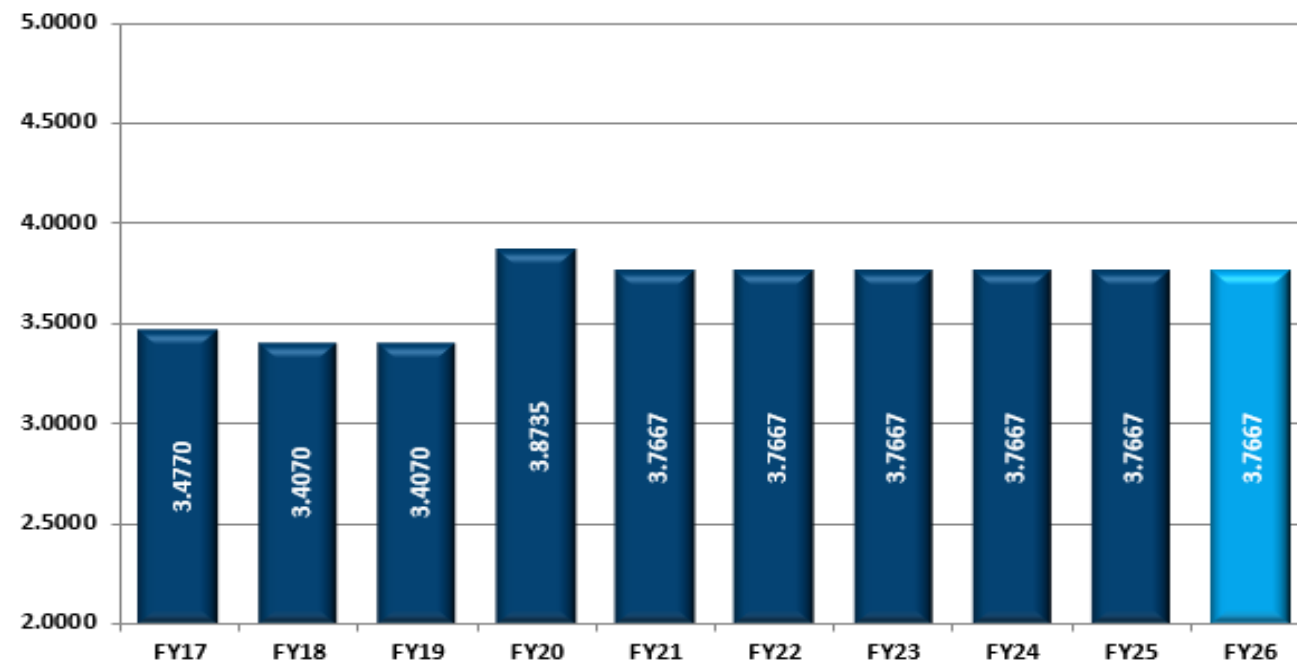


SARASOTA COUNTY SCHOOL DISTRICT 42¢ State and Local.	CITY OF NORTH PORT 26¢ Police, Emergency Medical Services, Neighborhood Development, Parks & Recreation, Facilities, Charter Offices, and Administration & Management.	SARASOTA COUNTY 23¢ Sarasota County, Sarasota County Debt, Mosquito Control, and Legacy Trail.	OTHER* 9¢
---	---	---	---------------------

*OTHER includes Sarasota Memorial Hospital, Southwest Florida Water Management District, and West Coast Inland Navigation.

Historical Ad Valorem Millage Rate

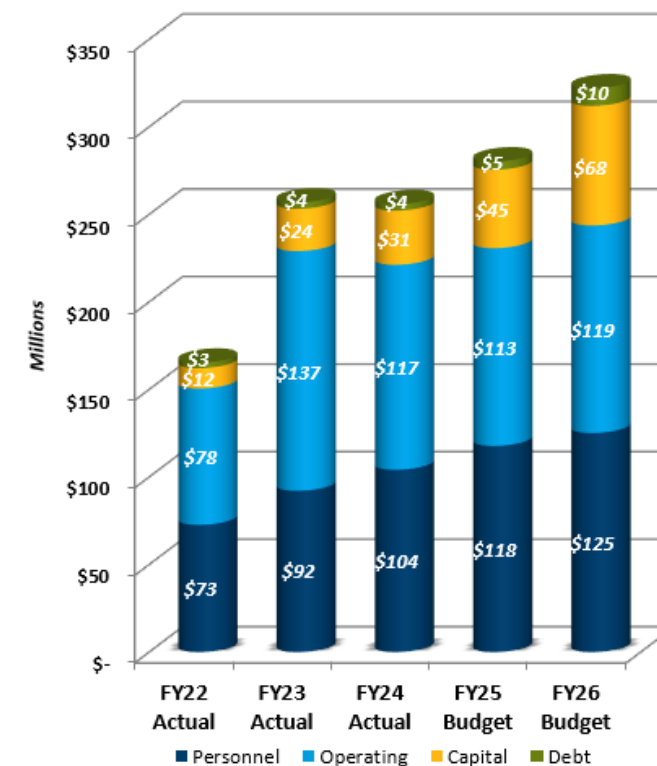
Millage Rate is the tax rate applied to the taxable value of real estate. One mill is equivalent to \$1 in taxes per \$1,000 in taxable value. For example, if your property has a taxable value of \$100,000, and you're assessed a 1 mill tax rate, you'll pay \$100 in taxes. To calculate your actual tax bill based on the millage rate, multiply the taxable value of your property by the millage rate, then divide by 1,000.



All Funds Major Revenues

REVENUE	FY25 Adopted Budget	FY26 Adopted Budget	% Change
Property Taxes (City)	\$ 36,548,170	\$ 39,496,820	7.5%
Communications Services Tax	2,387,200	2,562,030	6.8%
District Assessments	49,561,950	56,200,320	11.8%
FP & L Franchise Fee	5,467,910	5,511,490	0.8%
Gas Taxes	3,869,370	3,966,100	2.4%
Half-Cent Sales Tax	10,411,680	10,559,340	1.4%
Impact Fees	29,283,510	25,957,090	-12.8%
Infrastructure Sales Surtax	19,064,270	18,976,530	-0.5%
State Revenue Sharing	4,704,890	4,918,150	4.3%
TOTAL	\$161,298,950	\$168,147,870	4.1%

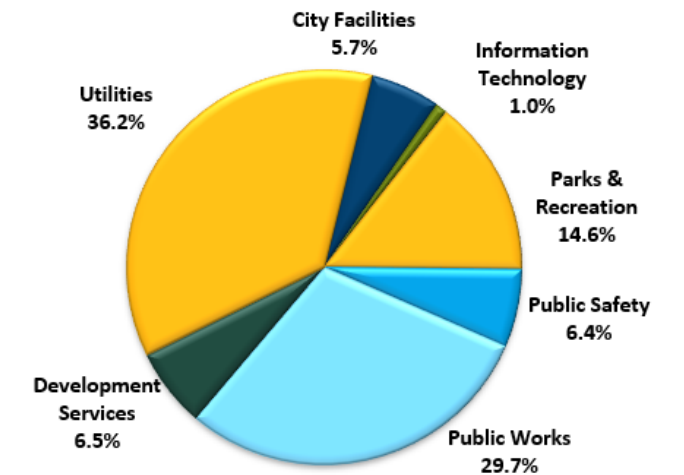
Actual Expenditures (FY22-FY24) & Adopted Budget (FY25-FY26)



Personnel Services – Expenses for salaries, wages, and benefits provided for employees by the City.
Operating – Expenses for ongoing costs of providing government services as well as the maintenance and operations of facilities and infrastructure.
Capital – Purchase of land, construction of buildings, major improvements, construction of basic infrastructure, vehicles, and large equipment.
Debt – Funds used for the principal and interest payments on bonds, commercial paper, and other debt.
 Excludes transfers, reserves, and unbudgeted funds 154, 155, 158, 159, 651, & 652.

Capital Improvement Program (CIP)

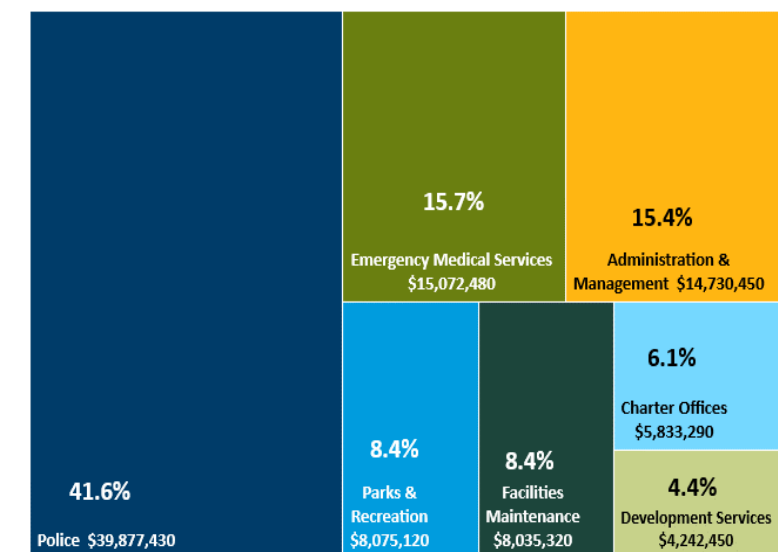
Total FY26 All Funds Investment in Capital Improvements



Capital Improvements by Type

City Facilities	\$ 3,556,180
Information Technology	600,000
Development Services	4,000,000
Parks & Recreation	9,042,500
Public Safety	3,953,140
Public Works	18,403,380
Utilities	22,450,500
TOTAL	\$ 62,005,700

General Fund Expenditures by Category



City of North Port
 4970 City Hall Blvd, North Port, FL 34286
 941-429-7000 | www.northportfl.gov