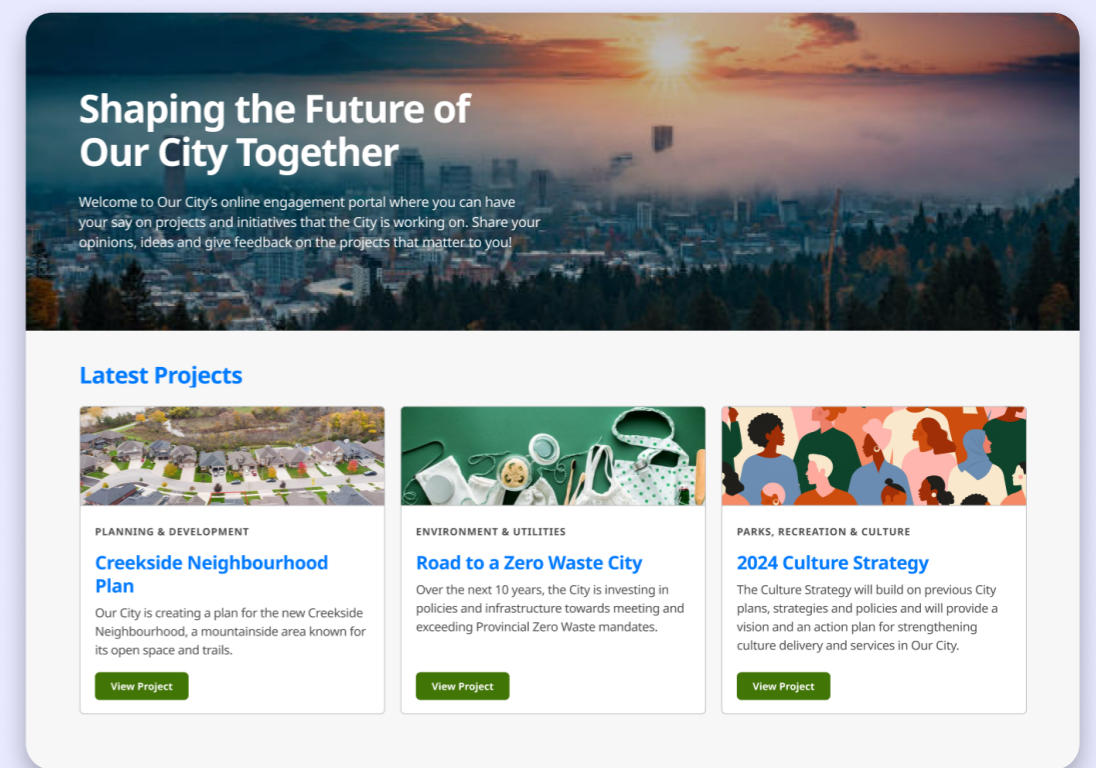
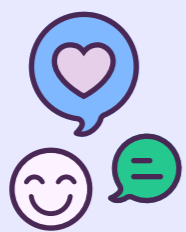


Zencity Engage

Shape your community's future, together with residents, by including them in the planning stages of your next initiative



Inform your plans with direct resident input



Answer specific questions

Take your next plan or initiative to your community and develop the vision with resident input in hand



Easily spot major takeaways

Visit your dashboard for a quick overview of the most meaningful findings, in a ready-to-share format



Build trust with residents

Make your planning processes transparent, invite participation, and post follow-up reports

Bring more voices in

Designed to be user-friendly and intuitive, Zencity Engage makes it easy for any resident to share their thoughts and be part of shaping their community

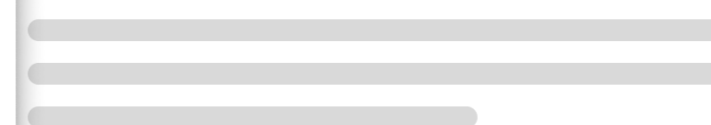


Parks and Recs 2023 Budget



[Participate Now](#)

Midtown Bike Lane Extension



[Join the Conversation](#)



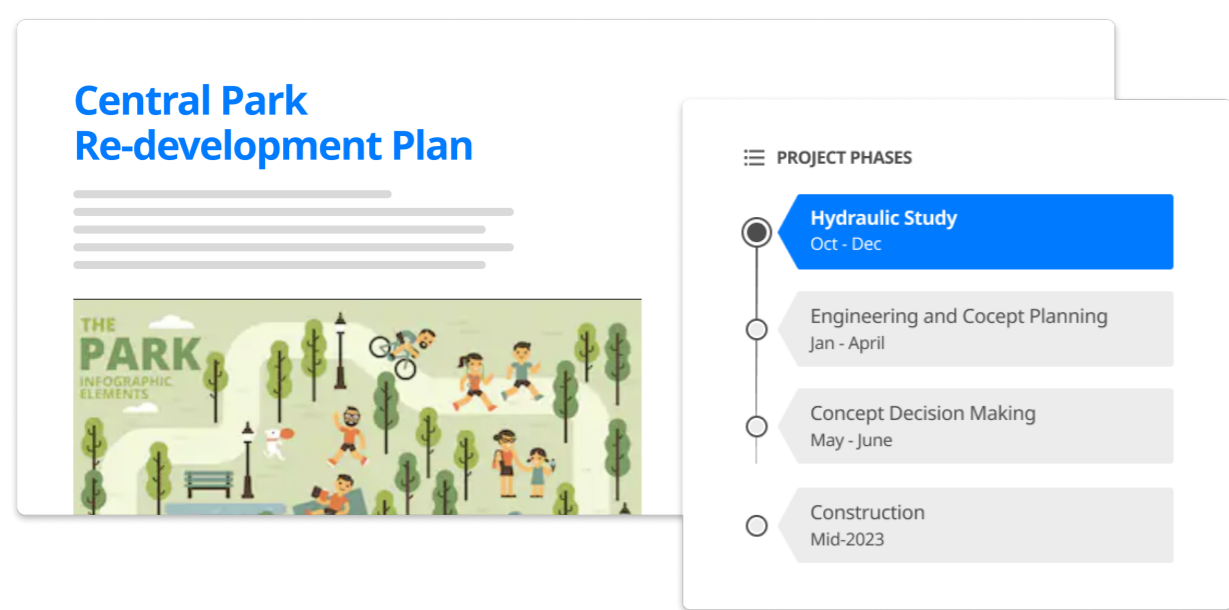
"Working at the city level, we often work on multiple projects and need to gather and publish feedback to move decisions forward... Zencity Engage is a user-friendly way to gain input."



Rebekah Ladd

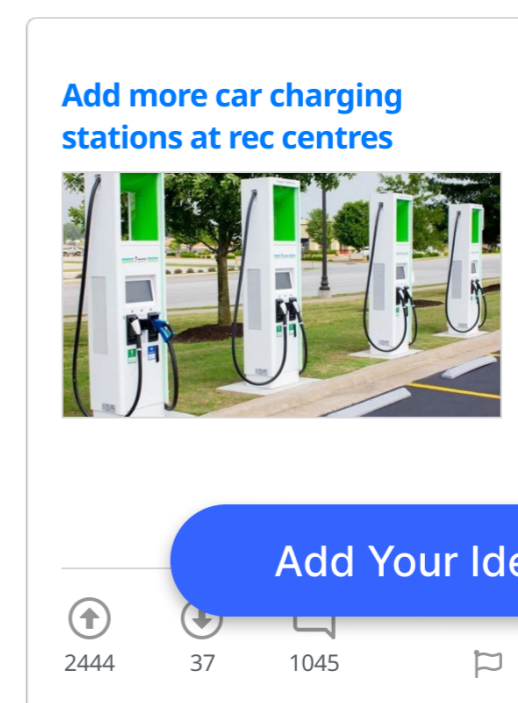
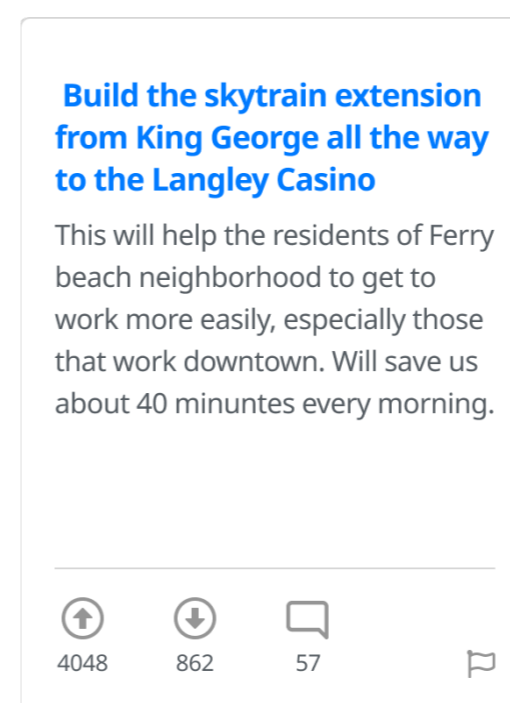
Public Information Officer, Casper Police Department, WY

Collaborative digital engagement



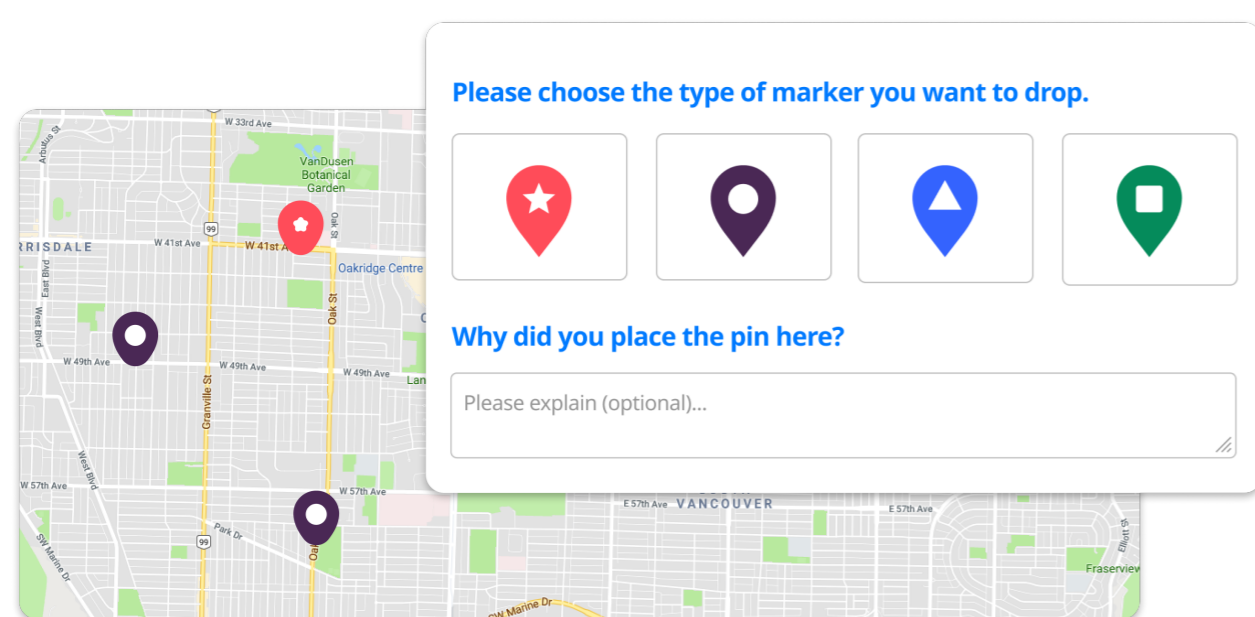
Create online project boards

Set up interactive and informative pages for each of your new initiatives to make it easy for residents to get the background and give their input



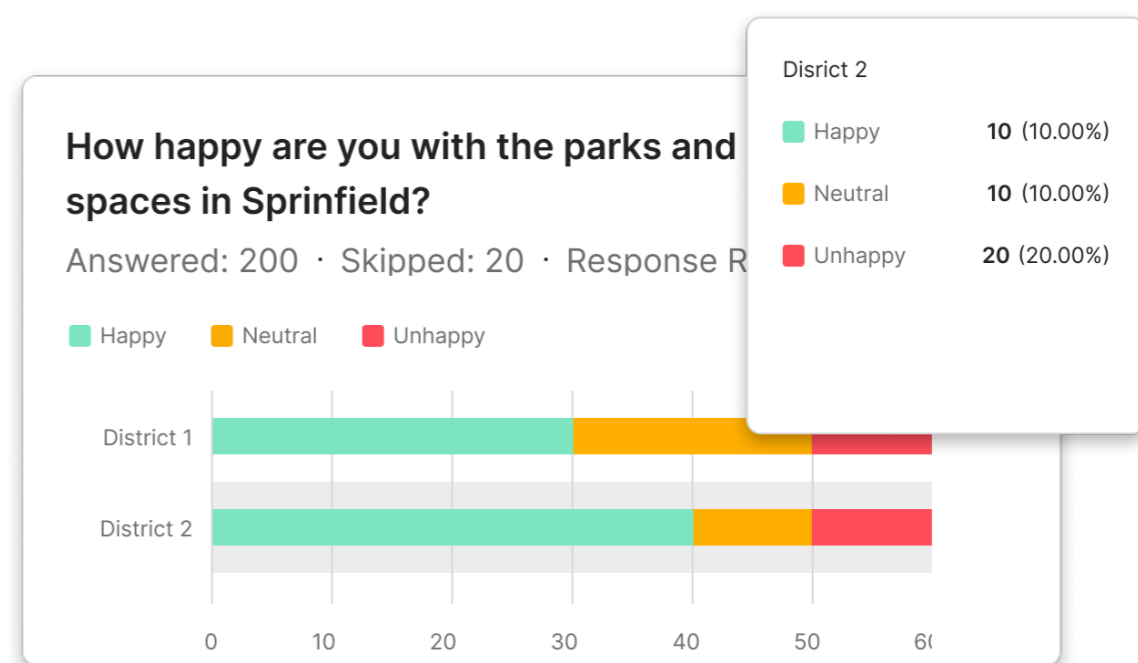
Offer intuitive tools for collaboration

Fill your board with interactive tools like idea walls, timelines, images, surveys, Q&As, and more to generate discussion and gather meaningful feedback



Locate feedback on a map

Let residents give site-specific comments through map pin drops, and offer interactive, visual representations of what you're working on



Share your findings with residents

Get a clear snapshot of the findings and close the loop with your residents by quickly building and sharing reports using built-in data visualization tools