



Port of
EVERETT

| *nbbj* |



CITY OF
MUKILTEO

Mukilteo City Council Update

April 3, 2023

Lisa Lefeber

CEO/Executive Director

Port of Everett



Mukilteo Waterfront – What we've been up to...

Revisioning

- ✓ *The Port hired NBBJ, a Seattle architecture, planning and design firm, to help with this process and visioning planning through 2022.*
- ✓ *Formed a diverse stakeholder workgroup that represents the varied interests and attractions at the waterfront; this group was intentionally a small group representing the broad interests of the waterfront.*
- ✓ *Held workgroup sessions to discuss current waterfront opportunities and constraints, vision for it's future, and important principles for which future planning and discussions should be centered.*
- ✓ *Opportunity for individual interviews with City Council members and others to gather feedback.*
- ✓ *Developed draft vision statement and draft set of guiding principles.*
- ✓ *Extensive public outreach and feedback via open house and survey.*
- ✓ *Finalized and adopted community informed vision statement and set of guiding principles for future redevelopment.*
- ✓ *Working on artist renderings to be able to communicate visually what is possible.*



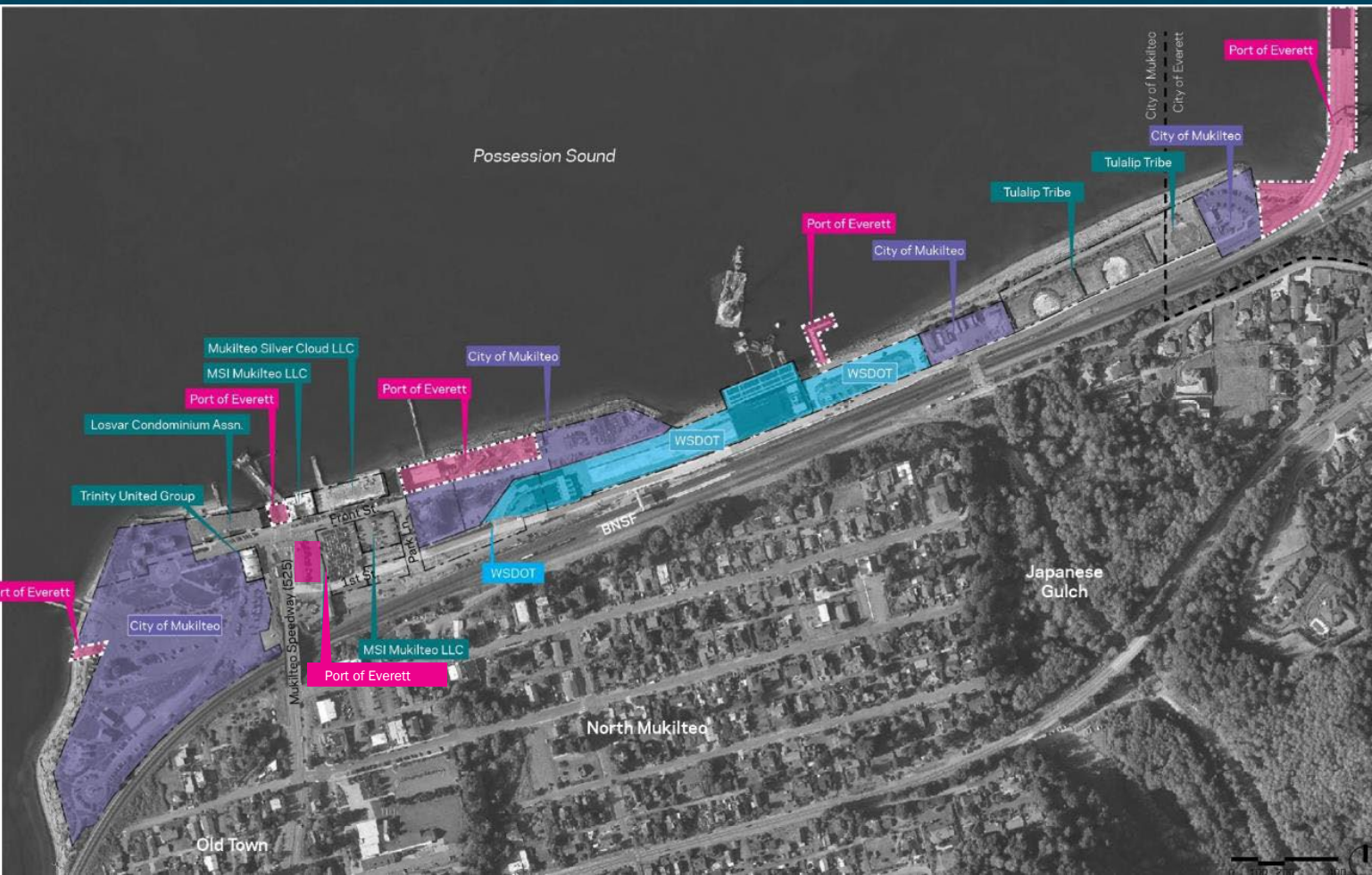
Mukilteo Waterfront – 10 Owners, 26 Acres

● Port of Everett

● Municipal

● State of Washington

● Private Owners





MY *Mukilteo*
WATERFRONT

OPEN HOUSE

175

ATTENDEE
SIGN-IN

225+

ESTIMATED ATTENDEES

284

COMMENTS

PUBLIC SURVEY

559

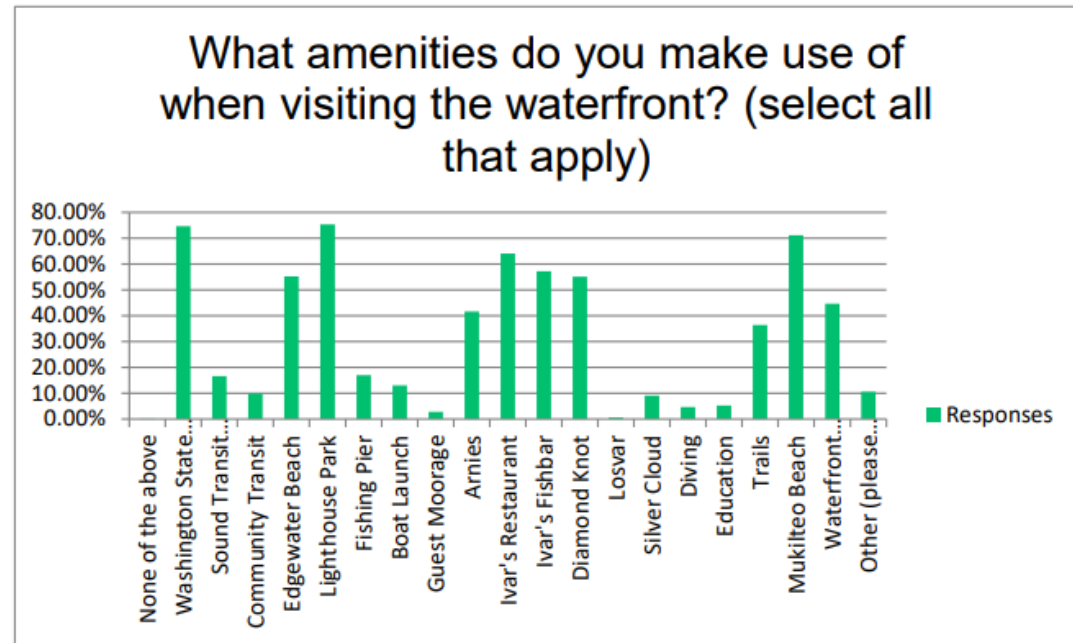
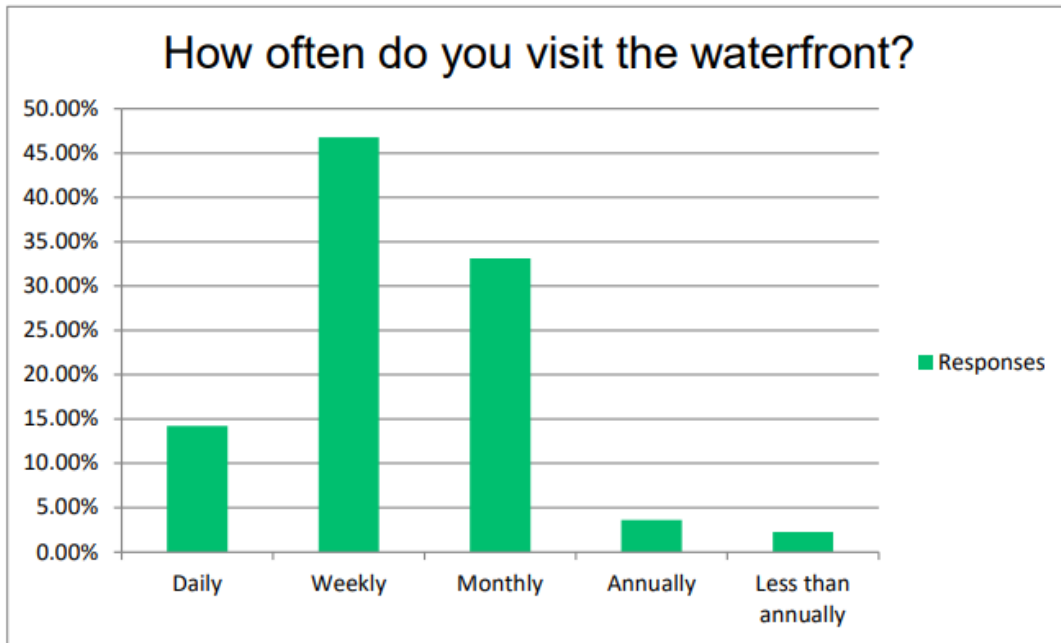
UNIQUE RESPONDERS

88%

RESPONSE RATE OF
OPEN ENDED QUESTIONS



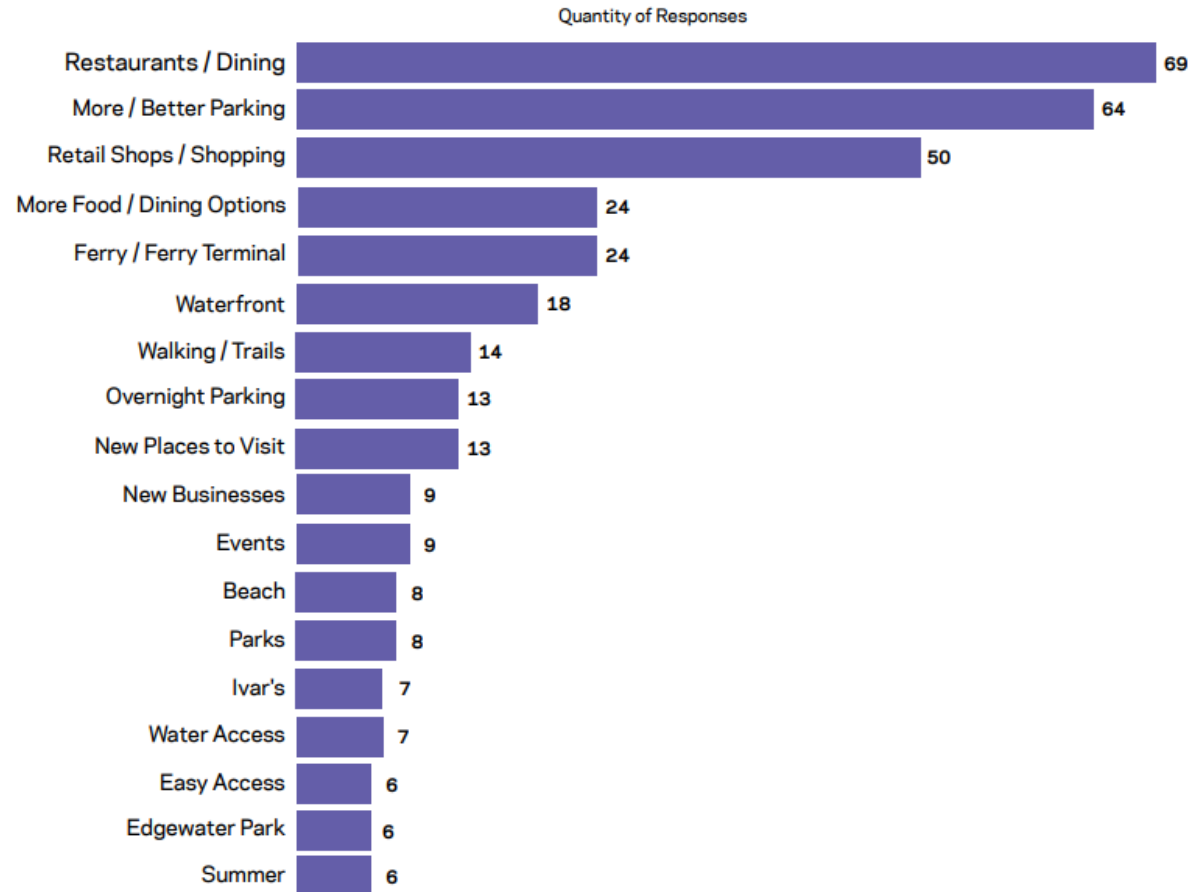
SURVEY DATA





SURVEY DATA

WHAT WOULD ENCOURAGE YOU TO VISIT THE WATERFRONT MORE OFTEN OR RECOMMEND A VISIT TO OTHERS?





MY Mukilteo
WATERFRONT

Vision Statement

Mukilteo's waterfront is a welcoming and convenient gathering place. It provides a year-round mix of uses that promotes culture, recreation and entertainment. It offers easy access to the beach, businesses and wonders of the Salish Sea.

The approved Guiding Principles are:

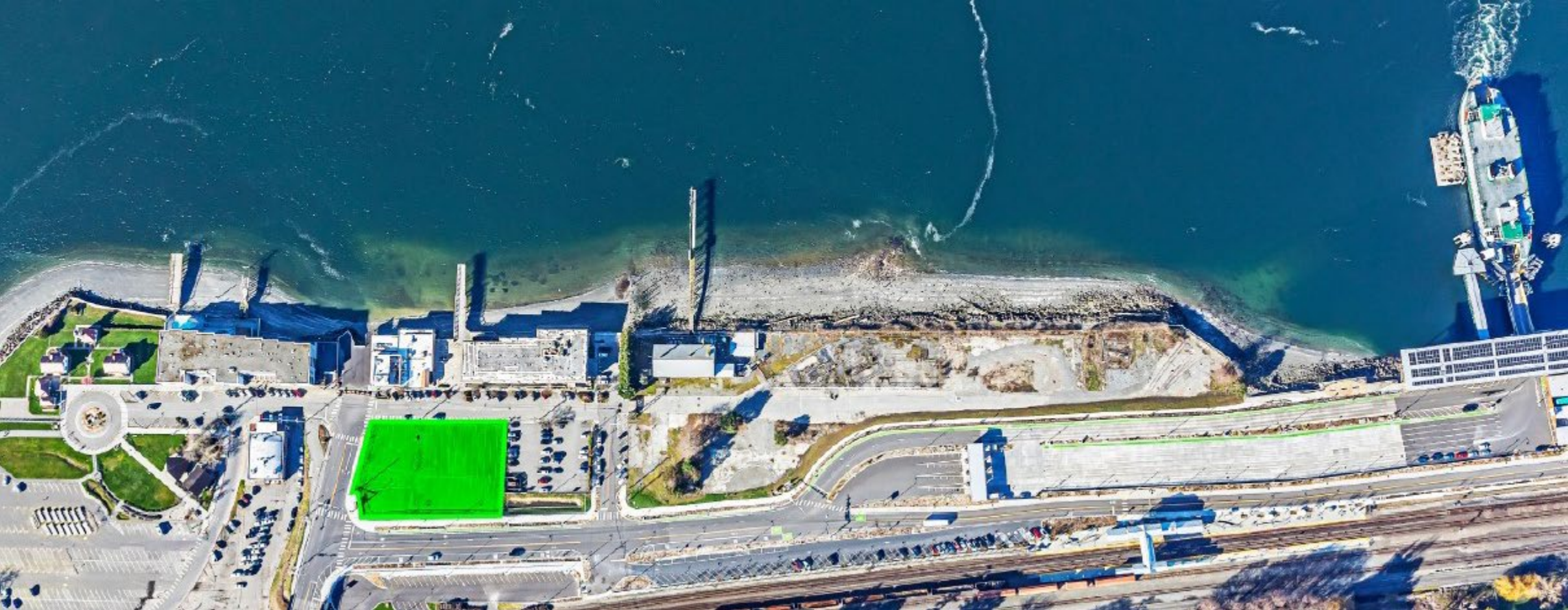
- ✓ *Authentically Mukilteo*
- ✓ *Pedestrian Friendly*
- ✓ *Year-Round Destination*
- ✓ *Environmentally Responsible & Sustainably Minded*
- ✓ *Celebrates Culture*
- ✓ *Thoughtful Parking*
- ✓ *Education Focused*
- ✓ *Transportation & Maritime Hub*
- ✓ *Boating & Shoreline Access*

Adopted unanimously by Port Commission & Mukilteo City Council

NOAA Acquisition



Port Acquired Former Ferry Holding Lanes



Activating Parklet



Fisherman's Harbor Example



Mukilteo Waterfront Now



Preliminary Artist Renderings



Front Street Now



Preliminary Artist Rendering – Front Street



NOAA + City Site Now



Preliminary Artist Renderings - NOAA + City Site



Tulalip Tribes Site Now (Former Tank Farm)



Preliminary Artist Rendering - Tulalip Tribes Property



2022 Recap & Next Steps

All dates are tentative and subject to change.

Q1 2022

- Hired NBBJ for planning
- Mukilteo Waterfront Stakeholder Focus Group Meetings
- Port/City Updates

Q2 2022

- Launch public survey
- Summarize feedback and provide recommendation on path forward
- Held public open house

Q3 2022

- Port/City adopt Vision and Guiding Principles for the Mukilteo Waterfront Development
- Port opens new Parklet/Outdoor dining
- Port acquires key parcel for unified waterfront development

Q4 2022

- Contracts with artist for renderings
- NOAA site cleared/preparing transfer documents


Q1/Q2 2023

- Commission Retreat to present artist renderings
- Recommended roles and responsibilities of partnership
- Open interim parking lot

Q3 2023

- Decision point to determine if a partnership agreement can be reached and/or the parties develop their parcels individually

Recommended Partnership Structure

 City of Mukilteo Lead

 Washington State Lead

 Port of Everett Lead

 Port/City Partner

 Tulalip Tribes Lead





nbbj



Q&A

