

Hyde Park Neighborhood Community Park

Tampa Florida
Design Concept
July 7, 2026



A place designed to meet the specific needs of the Hyde Park community that is also welcoming to everyone.

1. INTRODUCTION

WELCOME AND INTRODUCTIONS
FRAMEWORK OF THE MEETING
DESIRE AND PROCESS FOR INPUT

2. PROJECT OVERVIEW

TIMELINE
VISION
THE SITE

3. DESIGN DEVELOPMENT

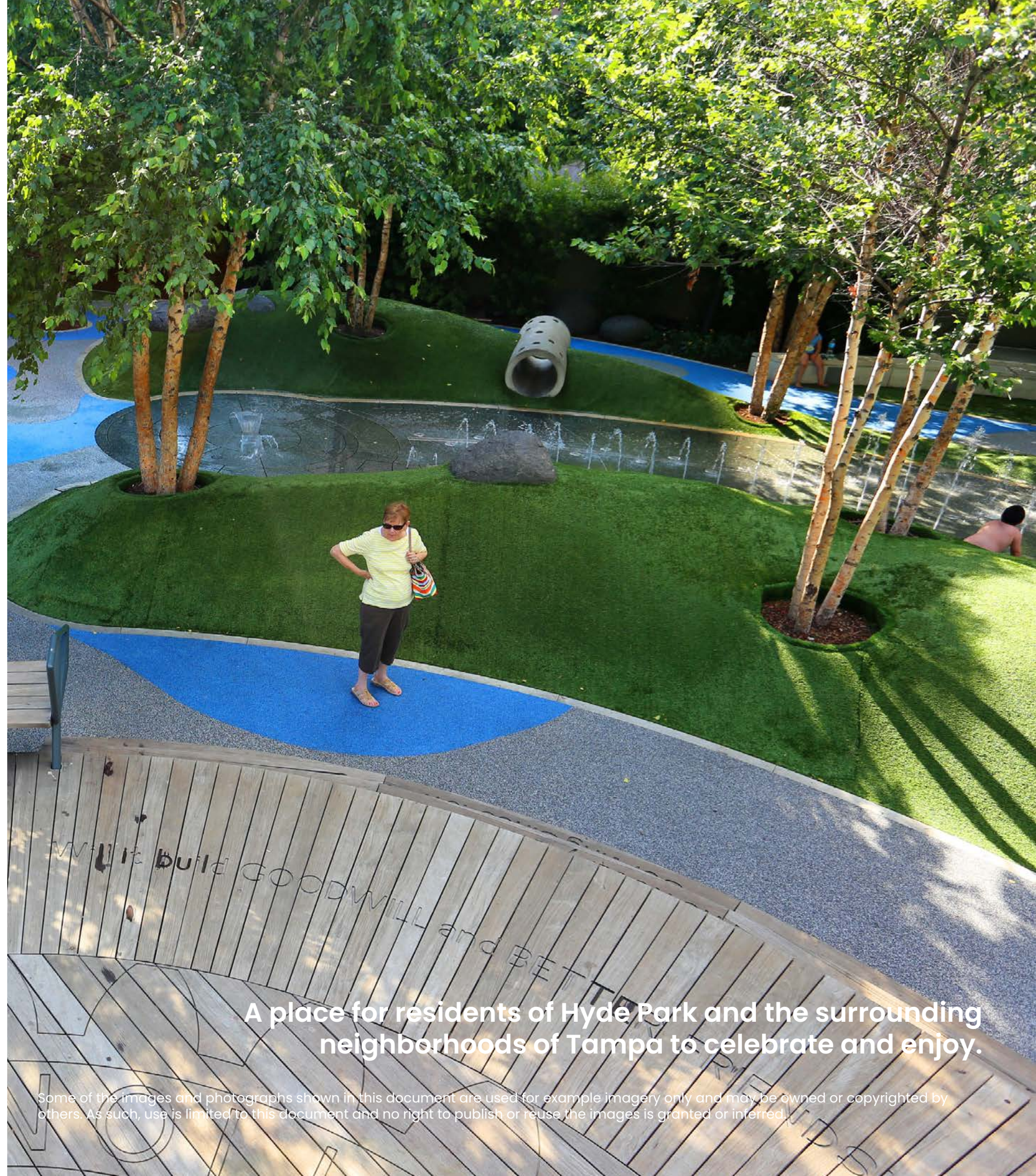
PROGRAM
CONCEPT ALTERNATIVES
DESIGN ALTERNATIVES
DISCUSSION

4. NEXT STEPS

SURVEY
REFINE DESIGN
COUNCIL APPROVAL

PROJECT TIMELINE

- 2012 Brian Funk begins collaboration with expressway authority on Swann ave underpass improvements
- 2015 Swann Pond improvements are completed through a partnership between the Hyde Park neighborhood and the City of Tampa.
- 2021 Harold Walker and Brian Funk begin exploring the opportunity to create a neighborhood park at the existing Swann Park site.
- 2022 Conner develops the initial vision and concept diagrams. Discussion begins with the City Parks Department and neighborhood representatives
- 2023 Preliminary park concepts are completed. Friends of Hyde Park is established as a 501(c)(3) nonprofit by Harold Walker and Brian Funk.
- 2024 Harold Walker leads effort to build neighborhood support for a new park.
- 2025 Harold Walker passes away, a great loss for the community. The City replaces the existing restrooms. Preliminary concepts are reviewed with the Parks Department and Hyde Park Neighborhood Association.
- 2026 The city authorizes public meetings to review the project and solicit community input.
- TODAY Public workshop to present the preliminary design concepts and gather community feedback.



A place for residents of Hyde Park and the surrounding neighborhoods of Tampa to celebrate and enjoy.

GUIDING PRINCIPALS



TRADITION

FAMILY



COMMUNITY

EXERCISE & FITNESS



PLAY

VISION

Swann Park will become a **signature public space for Hyde Park** and the surrounding Tampa community—a timeless neighborhood park where **tradition, family, and community** come together beneath the shade of historic live oaks.

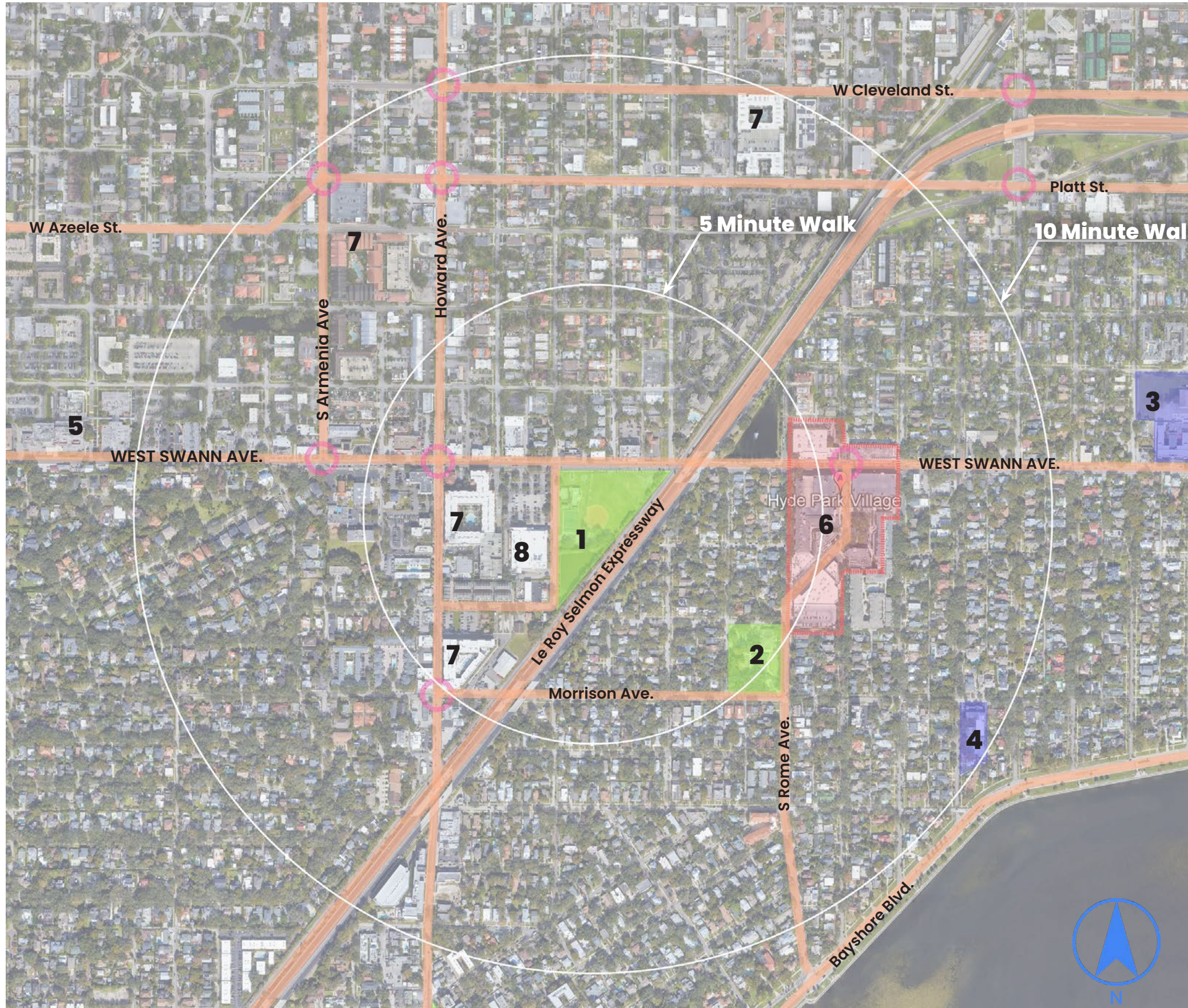
Inspired by the character and heritage of one of Tampa’s most treasured neighborhoods, the park is designed to strengthen community life while preserving the charm, scale, and enduring quality that define Hyde Park. **Thoughtfully crafted with timeless materials, generous green space, and integrated landscaping, Swann Park will feel like an authentic extension of the neighborhood.**

Designed for people of all ages and abilities, the park will offer spaces for **recreation, play, fitness, gathering, and quiet reflection. Open lawns, shaded seating, family-friendly amenities, public art, and flexible community spaces** will support everyday use while providing a welcoming setting for neighborhood events and celebrations.

More than a neighborhood park, Swann Park is an investment in Tampa’s future—**promoting health, strengthening community identity, celebrating local heritage, and enriching the quality of life for residents and visitors for generations to come.**








LOCATION

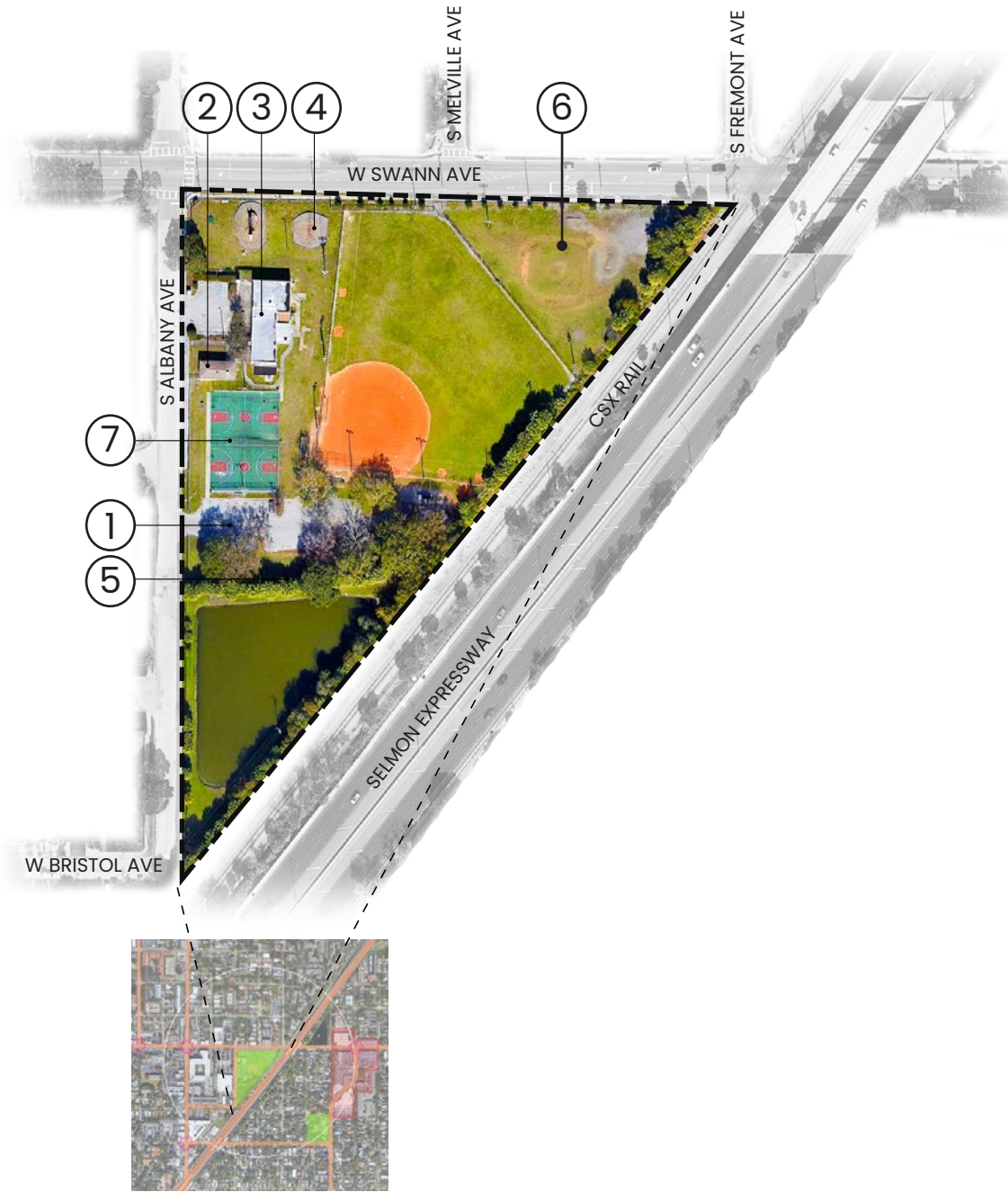


LEGEND

- 1 Park Site
- 2 Kate Jackson Park
- 3 Wilson Middle School
- 4 St. Johns Day School
- 5 Memorial Hospital
- 6 Hyde Park Village
- 7 Multi-family Housing
- 8 ALDI

-  Current Park Locations
-  Schools
-  Hyde Park Village
-  Major Traffic Intersections
-  Roadways

EXISTING CONDITIONS



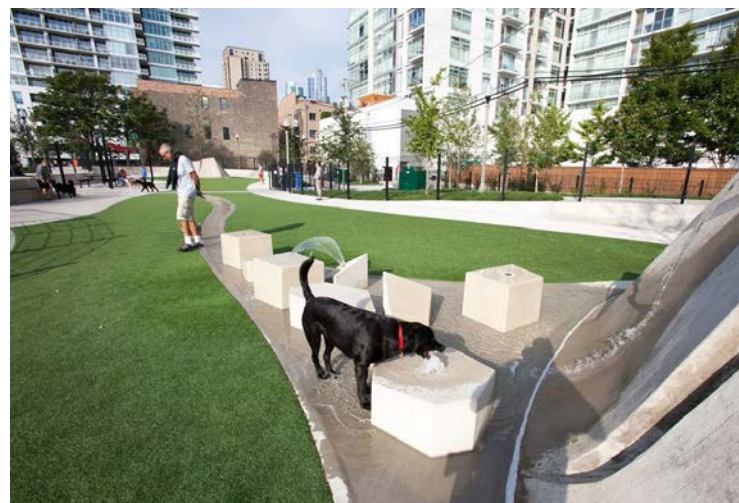
Key Map

- 1. Parking
 - 2. Art Studio (Closed)
 - 3. Restroom
 - 4. Playground
 - 5. Lake View
 - 6. Dog Park
 - 7. Basketball Courts
- Property Line

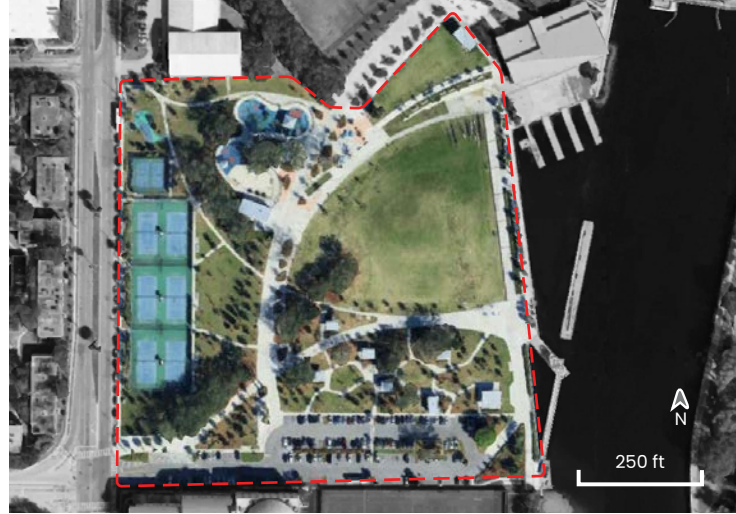


PARK FEATURES & PRECEDENT IMAGERY

- Community Lawn
- Celebrate the People, Places, and Events that have Shaped Hyde Park
- Extensive Planting of New Trees to Add Shade
- New Playgrounds
- Fitness & Recreation Zones
- Pet Play Area
- Shelters & Gathering Spaces
- Parking & Event Vehicle Access
- Restroom & Community Shelters
- Lighting & Electrical
- Art & Sculpture
- Multi-Modal Access via Pedestrian Walks & Bicycle Parking



PARK SCALE COMPARISON



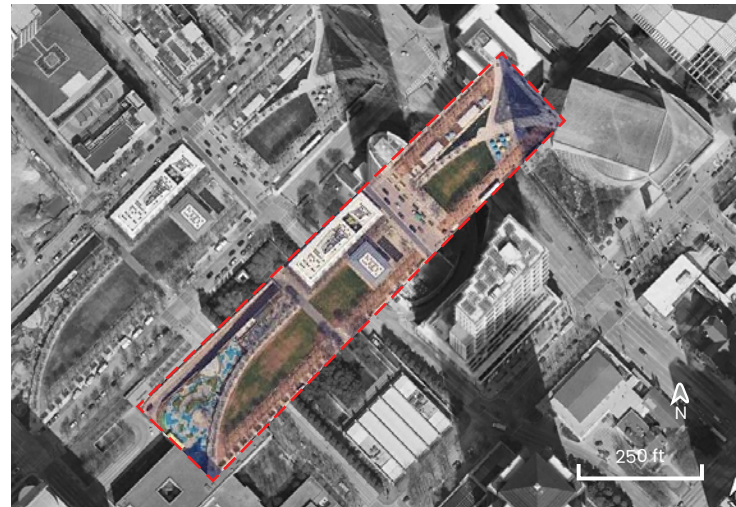
Julian B. Lane Riverfront Park
~ 13 acres (Tampa, Florida)



Curtis Hixon Waterfront Park
~ 7 acres (Tampa, Florida)



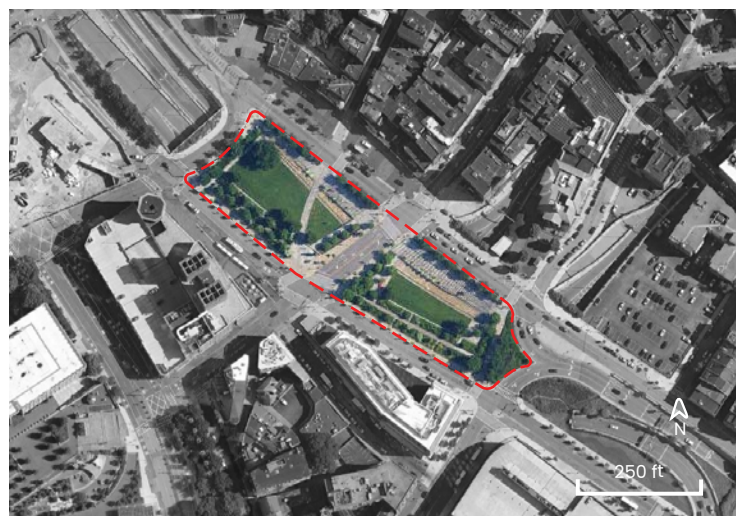
The Hyde Park Community Park
(Tampa, Florida)
~ 6 acres



Klyde Warren Park
~ 5.5 acres (Dallas, Texas)



Levy Park
~ 6 acres (Houston, Texas)



North End Park
~ 3 acres (Boston, Massachusetts)



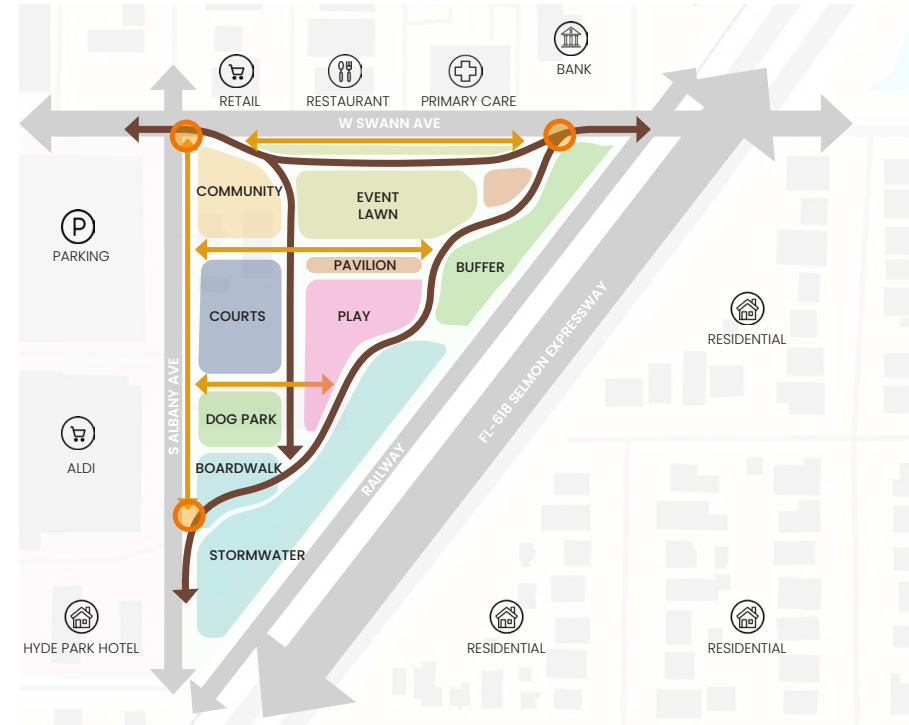
Wasioto Park
~ 6 acres (Nashville, Tennessee)

SITE PLANNING ALTERNATIVES

CONCEPT A



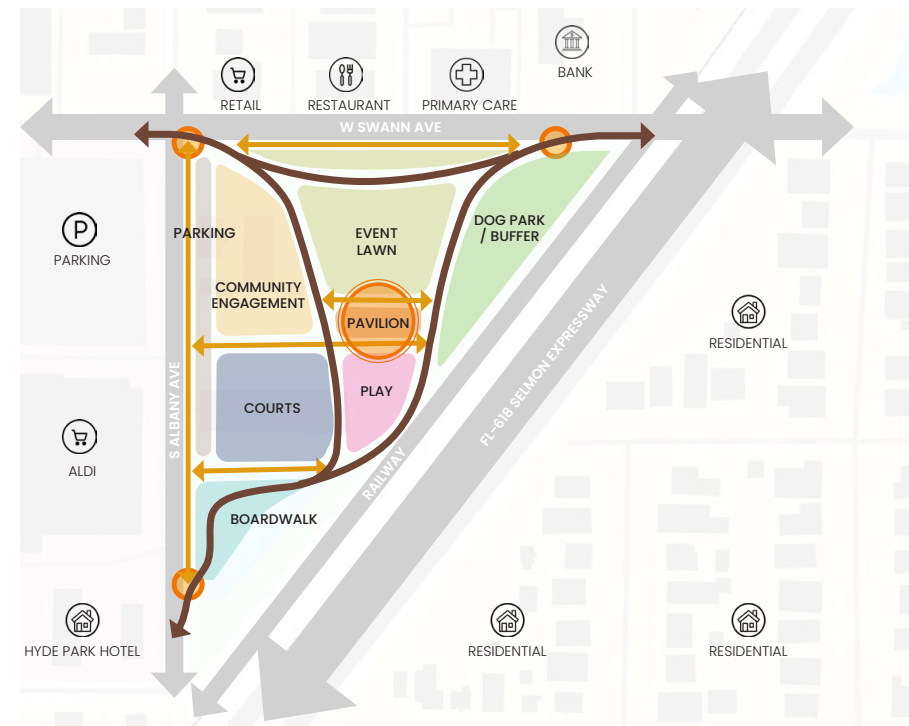
CONCEPT B



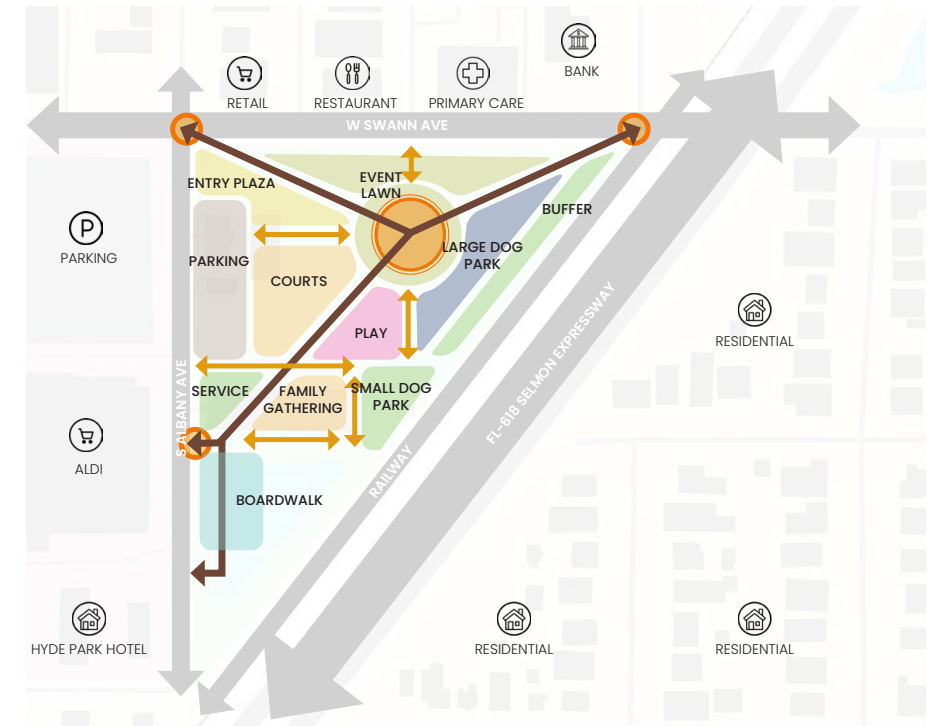
CONCEPT C



CONCEPT D



CONCEPT E



SITE PLANNING ALTERNATIVES

CONCEPT A



CONCEPT B



CONCEPT A

LEGEND

1. Community Lawn
2. Oak-Lined Walk with Seating
3. Sculpture Courtyard
4. Existing Restrooms
5. Playground
6. Playground Shade Canopy
7. Community Shelters
8. Fitness Equipment with Shade Canopy
9. Play Courts - Pickleball & Basketball
10. Small and Large Dog Play Lawn
11. Picnic Shelters
12. Parking
13. On Street Parking / Food Truck Staging



CONCEPT A – AERIAL PERSPECTIVE RENDERING



CONCEPT A – AERIAL PERSPECTIVE



CONCEPT A - AERIAL PERSPECTIVE



CONCEPT A – AERIAL PERSPECTIVE



CONCEPT A – AERIAL PERSPECTIVE



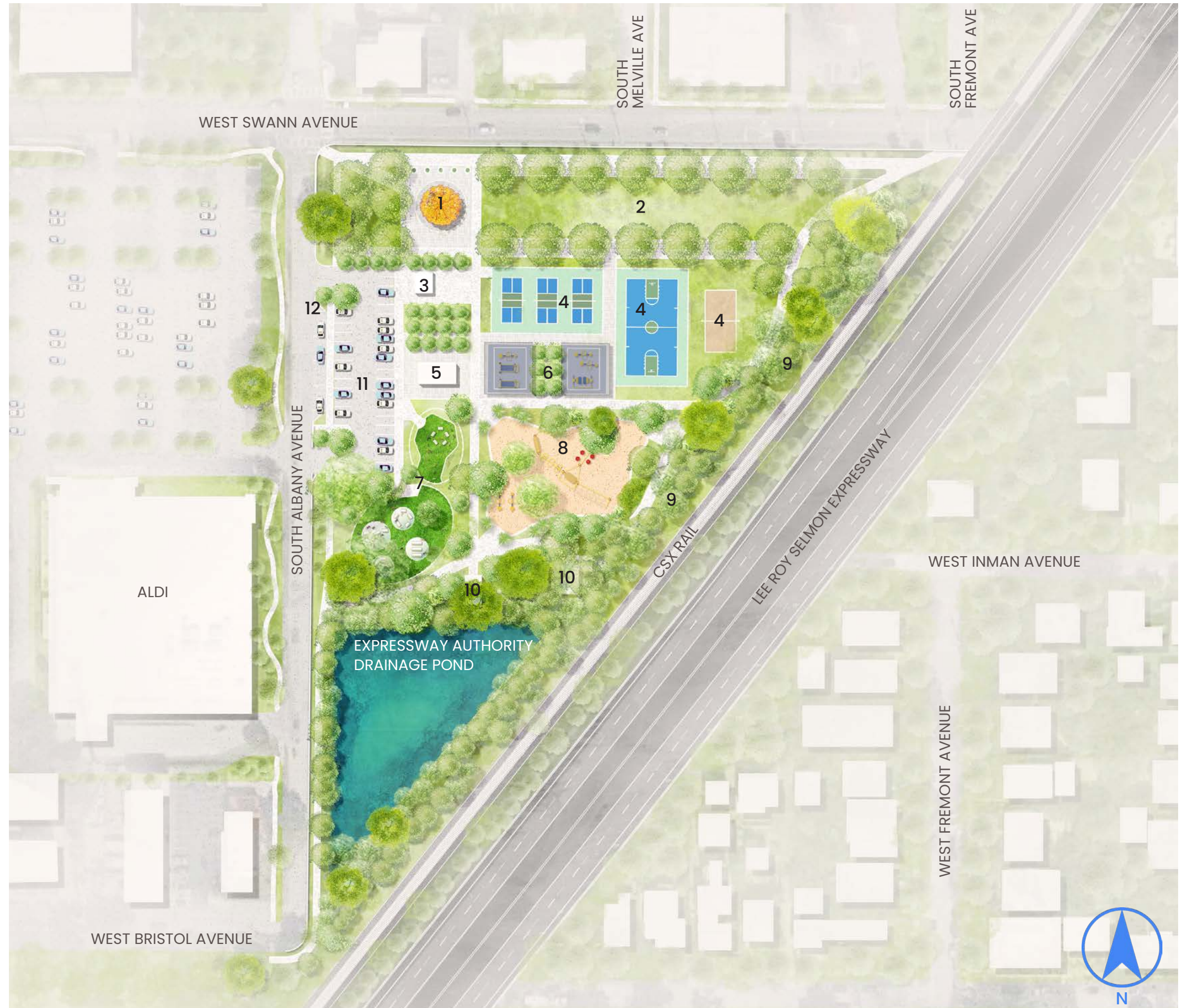
CONCEPT A – GROUND LEVEL PERSPECTIVE



CONCEPT B

LEGEND

1. Sculpture Courtyard
2. Community Lawn
3. Existing Restrooms
4. Play Courts - Pickleball, Basketball & Beach Volleyball
5. Community Shelter
6. Fitness Equipment with Shade Canopy
7. Large and Small Dog Play Lawns
8. Playground
9. Natural Trail
10. Picnic Shelters
11. Parking
12. On Street Parking / Food Truck Staging



CONCEPT B – AERIAL PERSPECTIVE



CONCEPT B – AERIAL PERSPECTIVE



CONCEPT B – AERIAL PERSPECTIVE



CONCEPT B – AERIAL PERSPECTIVE



CONCEPT B – AERIAL PERSPECTIVE



SESSION FEEDBACK CARD



Thank you for attending today's presentation of the Swann Avenue Community Park. We appreciate your input and comment as we develop the design into a project that meets the needs of the local residents. Please take a moment to respond to the following questions:

Which of the design features represented today are most important to you?

- | | |
|---|--|
| <input type="checkbox"/> Community Lawn | <input type="checkbox"/> Fitness Equipment |
| <input type="checkbox"/> Oak-Lined Walk with Seating | <input type="checkbox"/> Play Courts - Pickleball & Basketball |
| <input type="checkbox"/> Sculpture Courtyard | <input type="checkbox"/> Pet Play Area |
| <input type="checkbox"/> Playground | <input type="checkbox"/> Pedestrian walks & Bicycle Parking |
| <input type="checkbox"/> Picnic Shelters + Gathering Spaces | Other: _____ |

Which of the design alternatives do you feel best meet community needs?

- | | |
|--|--|
| <input type="checkbox"/> Alternative A | <input type="checkbox"/> Alternative B |
|--|--|

Comments:



THANK YOU FOR PARTICIPATING