



parks,
recreation
& facilities

Community Meeting
July 20, 2023



Reiche School Playground



Sashie Misner
Landscape
Architecture

www.landandplay.com | 207-406-0734



RS LEONARD
Landscape Architecture

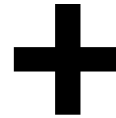
Introductions

Steering Committee



Tatyana Vashchenko
PARKS PROJECT MANAGER

Alex Marshall
PARKS DIVISION DIRECTOR



Charles Marengi
REICHE TEACHER LEADER

Tammara Sweeney
PPS FACILITIES DIRECTOR

Angela O'Connor
RECREATION ASSISTANT
DIRECTOR

Keith Forest (Tater)
PLAYGROUND TECHNICIAN/INSPECTOR

Addy Smith-Reiman
PARENT/COMMUNITY MEMBER

Design Team



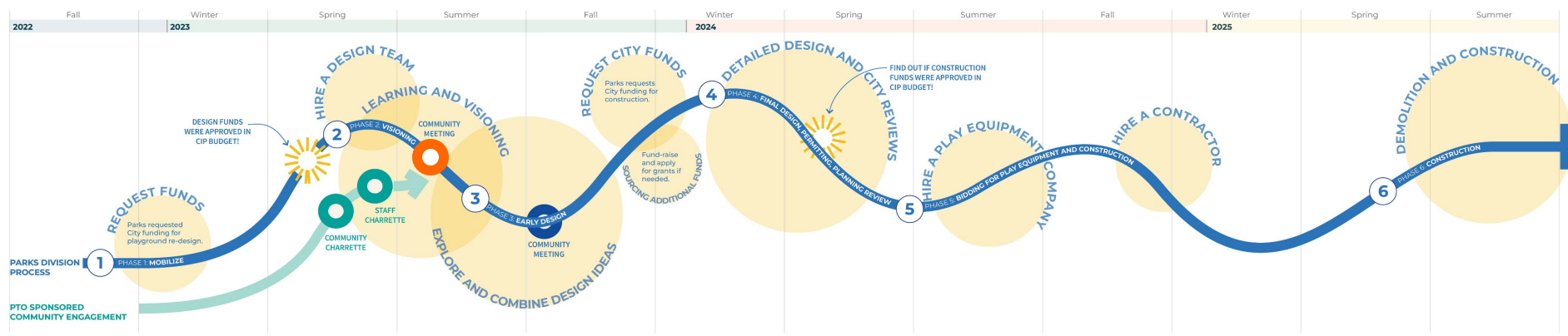
Sashie Misner
Lead Landscape Architect



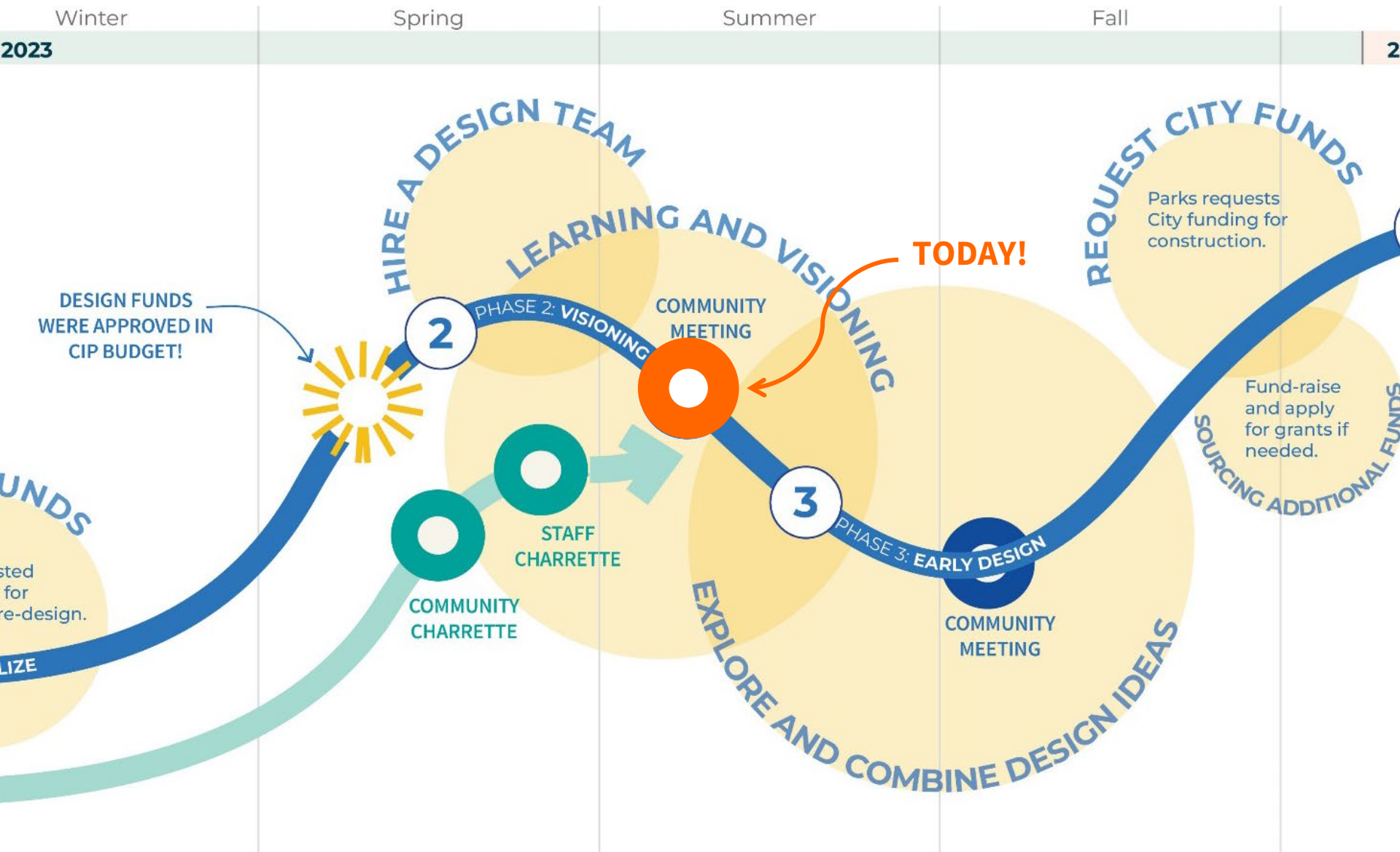
Regina Leonard
Landscape Architect

Process

Reiche Playground Replacement Tentative Project Timeline (Subject to Change!)



Process



Schedule

TASK 1

Site Assessment & Community Input

- Site Survey/ Base Plan- **in process** (4-5 weeks)
- Site Assessment- **in process** (2-weeks)
- Review survey & charrette findings- **continuous**
- **Community Meeting #1**



Sashie Misner
Landscape
Architecture

www.landandplay.com | 207-406-0734



parks,
recreation
& facilities

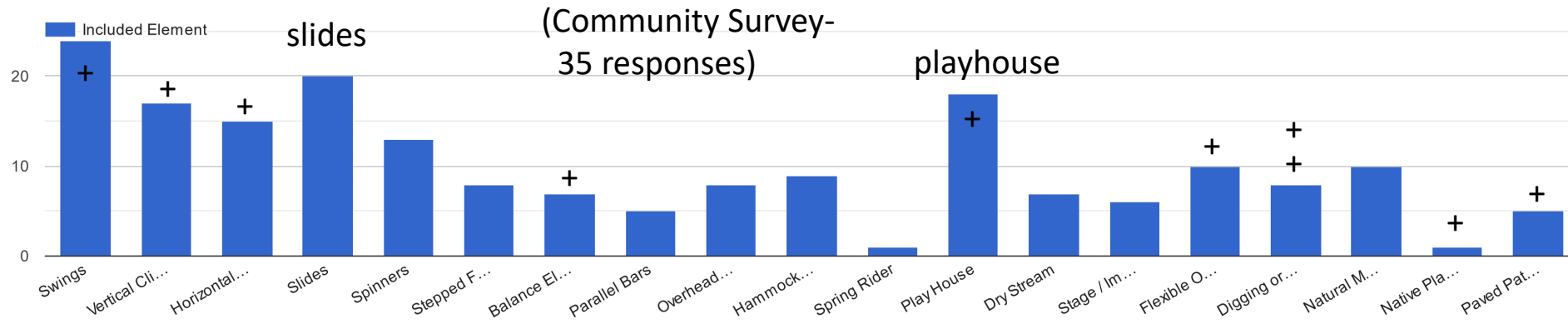


RS LEONARD
Landscape Architecture

Findings- Survey

Pick your five favorite examples of play features below. The images below show examples of these play features.

swings climbers



Additional Requests:

- Gathering spaces
- Teen areas
- More infant swings
- More shade
- Zip line
- Climber, climber, climber!
- Sliding hill

ACTIVE PLAY

- CLIMB!!!!
- JUMP
- SWING
- BALANCE
- SLIDING
- RUN

SPORT SOCCER!
BASKETBALL
BALL PLAY

COMMUNITY/SOCIAL

- PICNIC AREA
- VARIED SEATING
- FLEXIBLE SPACE
- PERFORMANCE/STAGE

INTERACTIVE

- DIGGING AREA
- LOOSE PARTS
- WATER PLAY
- NATURE PLAY

IMAGINATIVE PLAY

- HIDING SPOTS
- STAGE
- PLANTINGS
- PLAYHOUSE

- Small Hiding areas ✓
- Climbing web ✓✓✓
- Water play/water feature ✓✓
- Bridges
- inside/outside skeleton??
- Height - safe exploration
- Concerns: visibility for teachers,
- Concern: water play impact on kids when back inside
- Gates & accessibility for people with disability
- Summer/Winter playground
- Place to eat take-out dinner/picnics
- Rope bridge
- Trampoline
- Jumping
- Balancing
- Swinging
- Challenge
- Softer play surface
- Loose items
- Crave interactivity
- Rope ladders
- Seating for All ✓✓ including:
 - adults,
 - familes, in shade
 - Place for kids to sit, talk, hang out
- Event/performance area
- Consider circulation - where children get out or classrooms (outlet area)

- and how they transition into the space (and back indoors) - are mature trees in the way? Do trees need to be assessed for safety?
- Zip line like Deering Oaks
- Water feature like Deering Oaks
- Spinny spider web like Waynflete's
- Stream, waterway ✓
- Meandering bridges
- Climbing Wall (anything to climb)
- Water fountain/water bottle filler station
- Basketball hoop & court markings
- Open space field for soccer
- Slide embedded into slope
- Partially covered (sheltered) area for activities
- Remove fence separating playground from garden - barrier not good (it was also suggested that the green from garden features be extended into the play area)
- 3D topo map of maine showing natural features like rivers
- Plant durable trees - sugar maple
- Use granite blocks for sitting/climbing that can separate spaces but are low and more inviting than taller fences

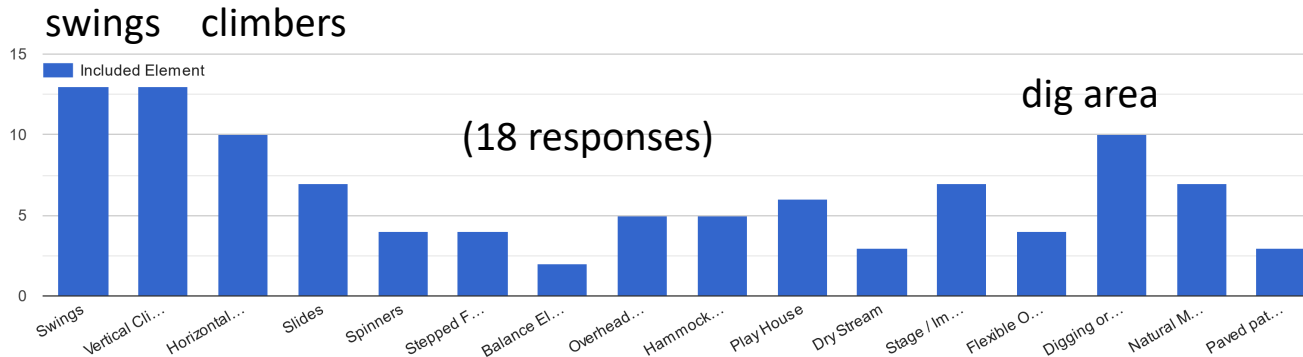
Charrette Findings- Staff

FUNCTIONAL

WATER FOUNTAIN
SHED/STORAGE
ACCESSIBILITY
SECURITY

- | | | |
|----|--|---|
| #1 | Perimeter hills
Existing Hill- Sliding
Cobbles & Waterway @ Natural Gully | Big loose parts
Easy entry - Access ADA
Water - hesitation/concerns |
| #2 | Storage Shed w hoops, cones, balls
Shrubs around perimeter - barrier
Another path for staff access down to edges at Clark St | "Urban" slides (cement)
Safe climbing spaces
Quiet Play spaces and nooks along K wall |
| #3 | Soccer Field w/Barriers
Perimeter Safety - increase barrier size
Fun-safe + natural -keep trees and add more | #6 Digging Space
Other Ball Play (hoop)
Soccer Goals
Obstacle Course? |
| #4 | Separate Prek Area
Big shrubs that feel like another (?) | #Co Musical Activity - chimes, mallet Spinner |
| #7 | Natural Soccer Goals
Hidden spaces
Imaginative structures | Gates for safety with gargoyles
C#1 Field with turf
Amorphic structures |

What types of play features or settings would you most like to see included in the new playground? Pick up to five options you most strongly support. Images of some of these features are included below as example... general representations, not necessarily the exact designs to be used.



Additional Requests:

- Music garden
- Zip line
- Hills
- Concern about vandalism
- Sport field

Charrette Findings

Use snow melt | Water play





Perceived safety at perimeter/Access



Tripping hazards



Existing vegetation

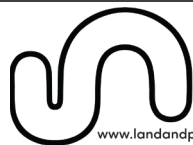


Stormwater & erosion



Scale

Play Value/ Efficiencies



Sashie Misner
Landscape
Architecture

www.landandplay.com | 207-406-0734



parks,
recreation
& facilities



RS LEONARD
Landscape Architecture



Sun/Shade Patterns

Play Value/ Efficiencies



Sashie Misner
Landscape
Architecture

www.landandplay.com | 207-406-0734



parks,
recreation
& facilities



RS LEONARD
Landscape Architecture



Uses

Play Value/ Efficiencies



Sashie Misner
Landscape
Architecture

www.landandplay.com | 207-406-0734



parks,
recreation
& facilities



RS LEONARD
Landscape Architecture



Sashie Misner
Landscape
Architecture

www.landandplay.com | 207-406-0734



parks,
recreation
& facilities



RS LEONARD
Landscape Architecture



2003
Google Earth



Sashie Misner
Landscape
Architecture

www.landandplay.com | 207-406-0734



parks,
recreation
& facilities



RS LEONARD
Landscape Architecture

Schedule

TASK 1

Site Assessment & Community Input

- Site Survey/ Base Plan- **in process** (4-5 weeks)
- Site Assessment- **in process** (2-weeks)
- Review survey & charrette findings- **continuous**

TASK 2

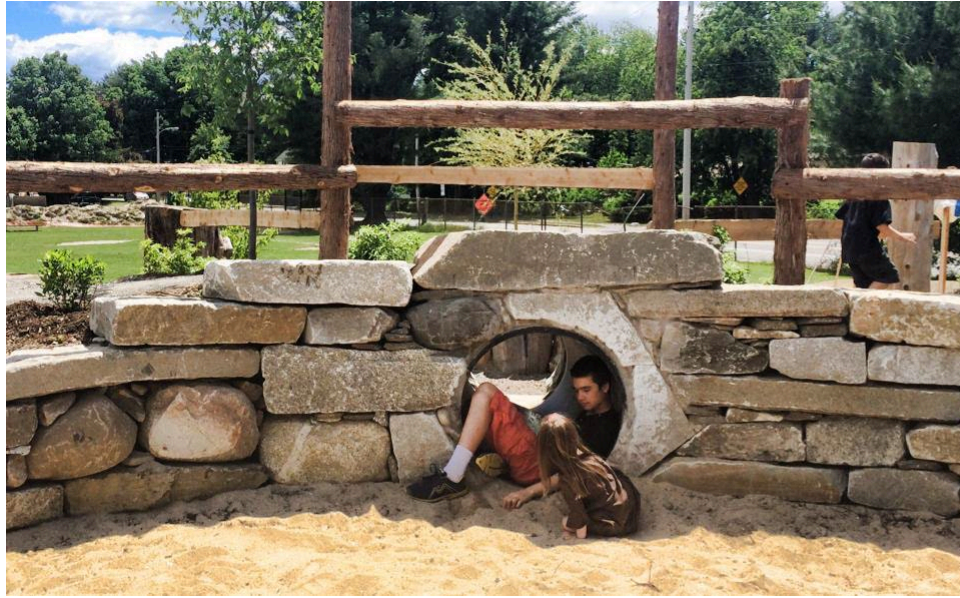
Conceptual Design

- Concept Alternatives (August- September)
- Community Meeting #2 (late September/early October)
- Final Concept Plan (October/November)

Concept Alternatives (example)



Sensory Stimulation / Emotional Development



CREATIVE/ EMOTIONAL/ SENSORY



SOCIAL DEVELOPMENT

Adult-Child interactions





PHYSICAL DEVELOPMENT



COGNITIVE (CHOICE/ LOOSE PARTS / VARIABLES)



PLAY PREFERENCE | MOVEMENT

Team questions:

Are there any additional community events we should be aware of?
& are there design features that could better help facilitate events?

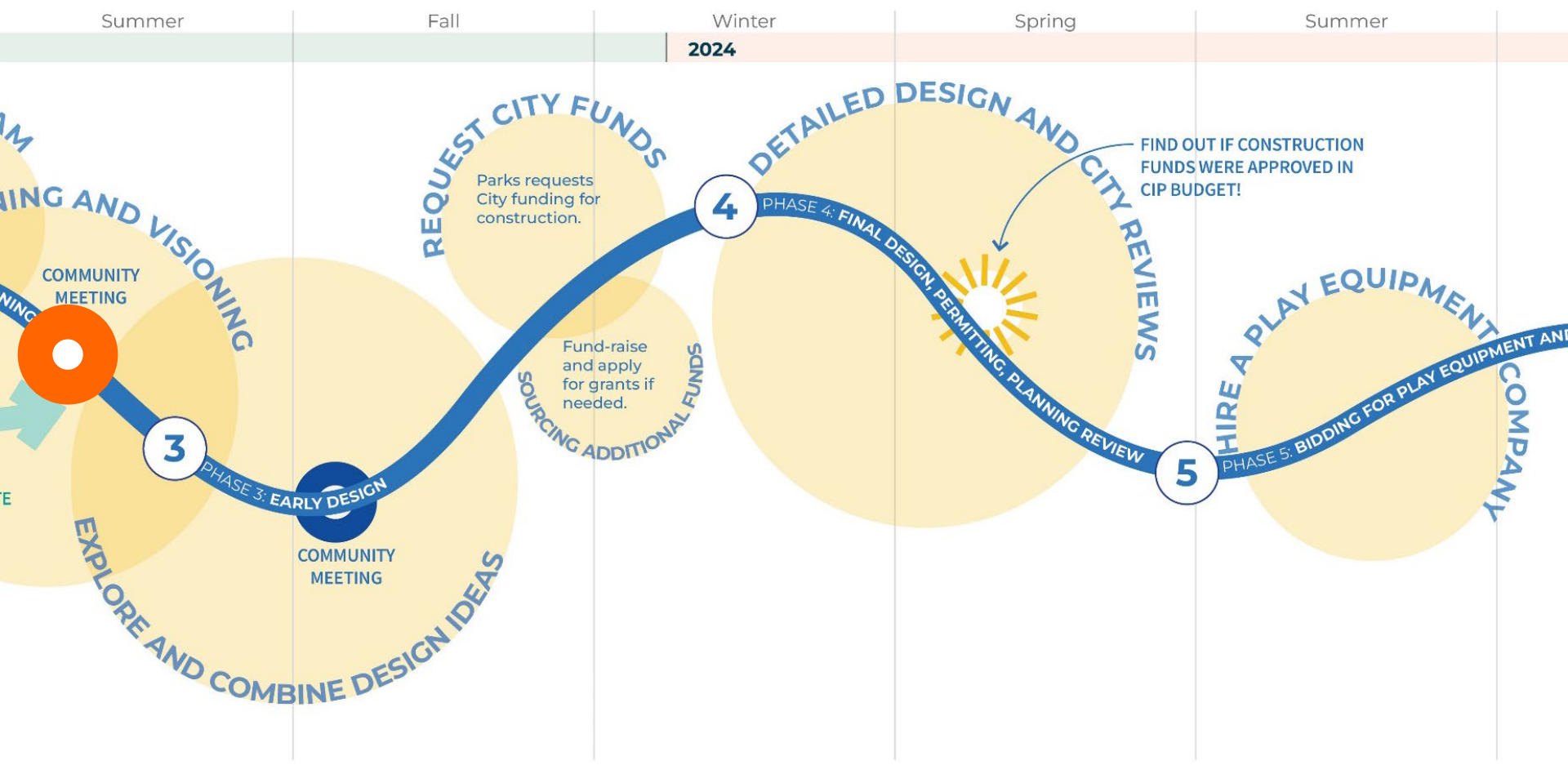
Please advise on memorial features that we should not disturb or need to relocate

Anything else we should know about your space?

Local (similar) Playgrounds

- Deering Oaks Playground
- Dougherty Field Playground
- Pond Cove Elementary School
- Saccarappa School
- EECS (2009)
- Breakwater School (2012)
- Waynflete

Next Steps



Follow along with project updates and materials at the project website:

<http://portlandmaine.gov/reicheplayground>

