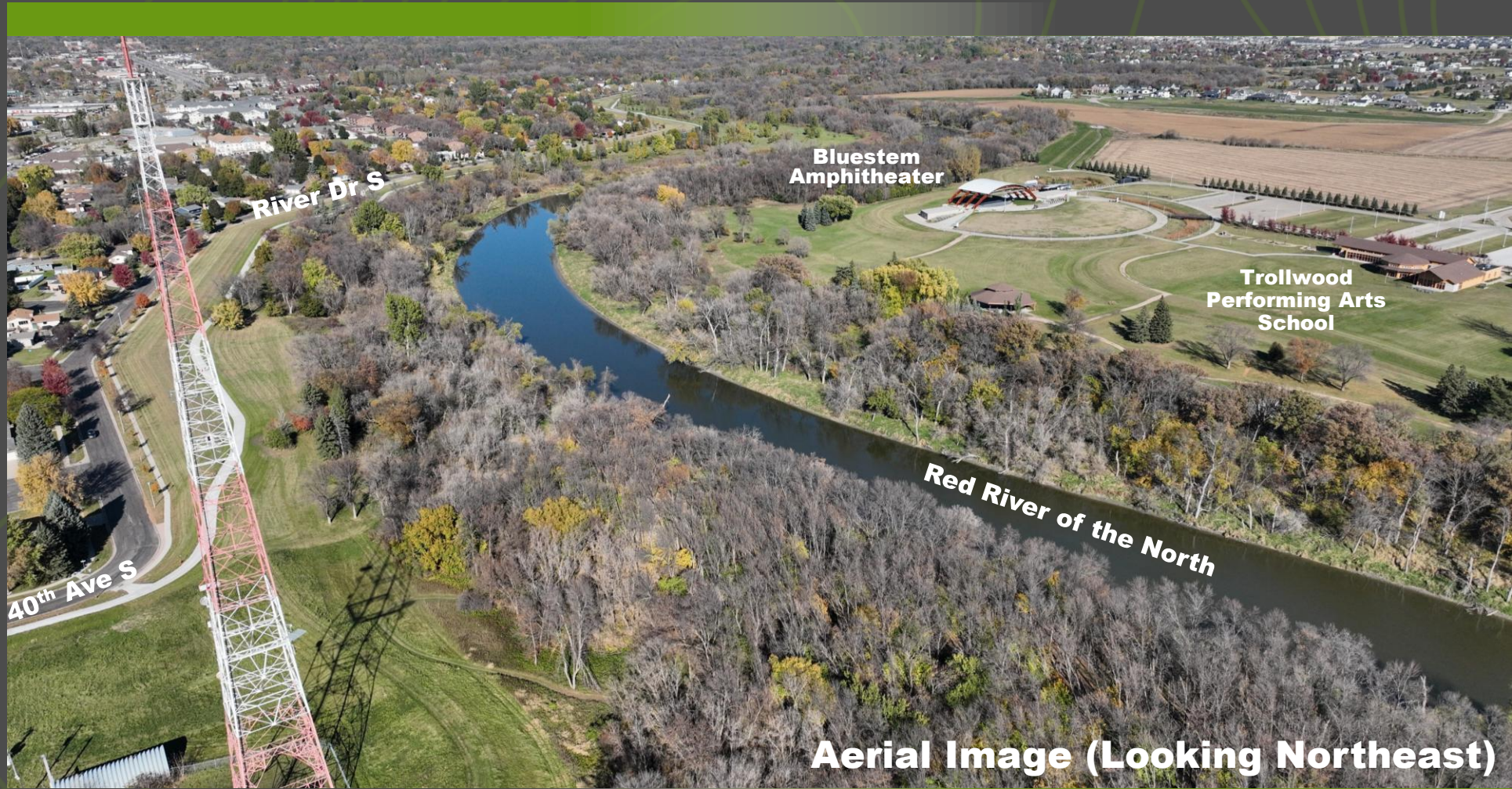


# Public Input Open House



**Red River  
Pedestrian Bridge**  
40th Ave. S Fargo/  
50th Ave. S Moorhead

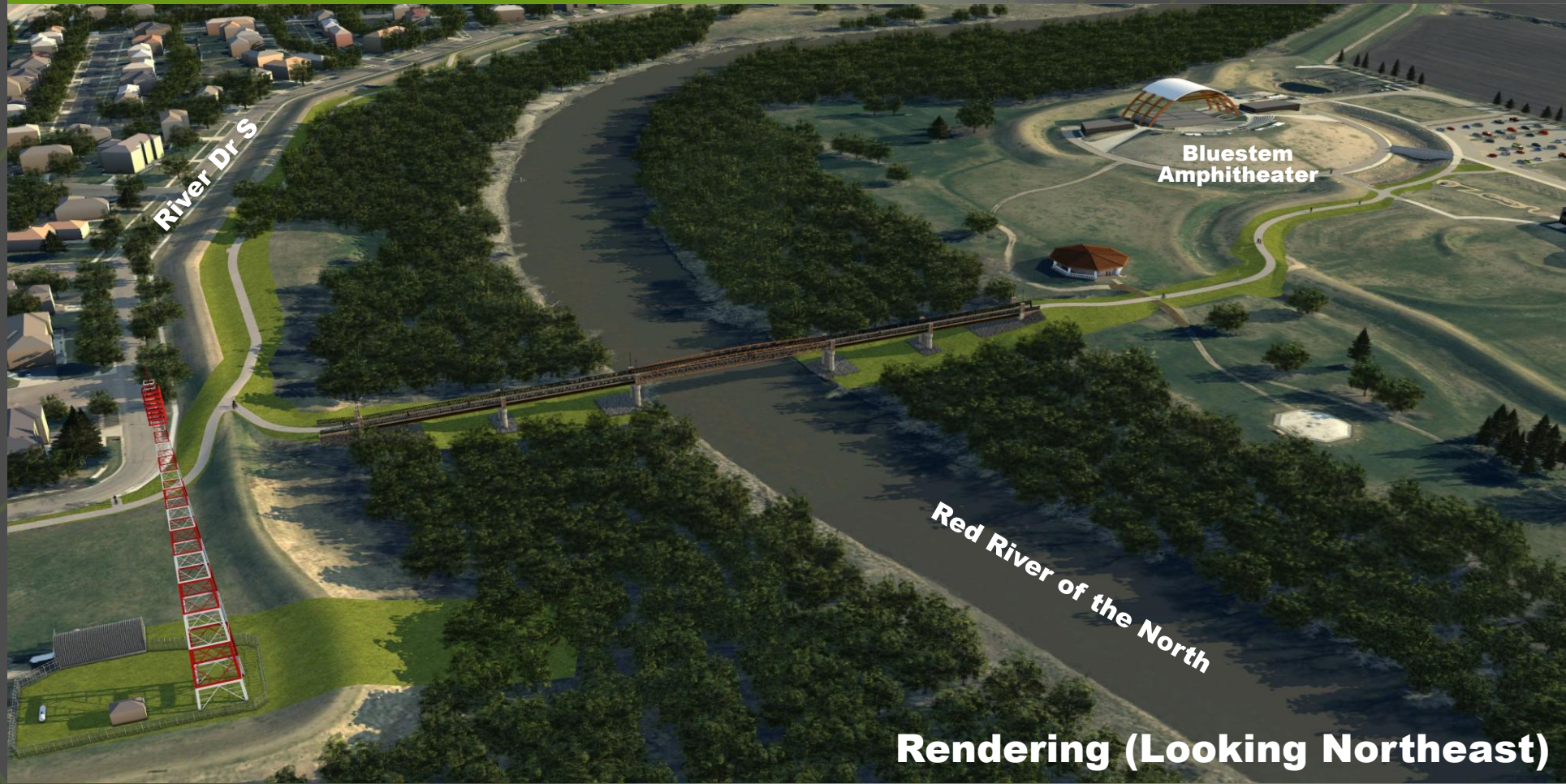
 **HOUSTON**  
engineering, inc.



THE CITY OF  
**Fargo**  
FAR MORE

**m**  
DEPARTMENT OF  
TRANSPORTATION

# Public Input Open House



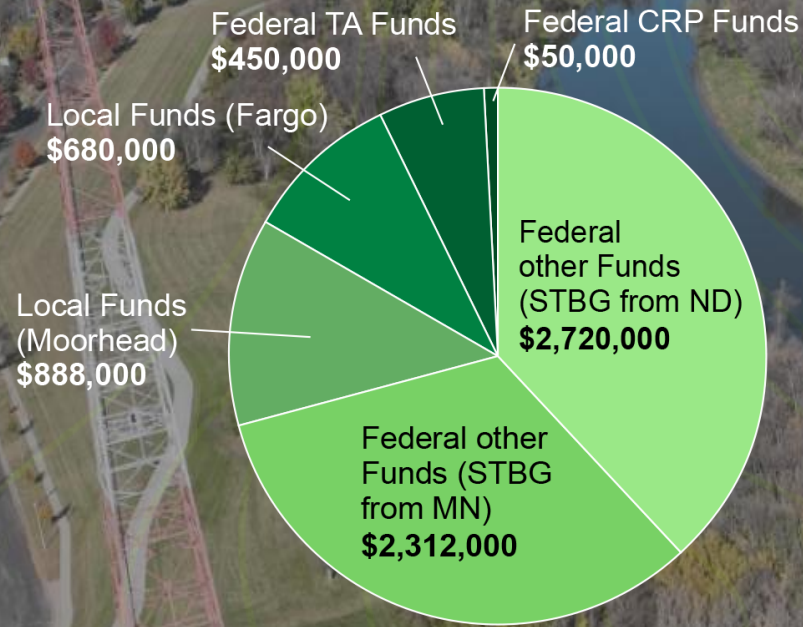
Rendering (Looking Northeast)

**Red River  
Pedestrian Bridge**  
40th Ave. S Fargo/  
50th Ave. S Moorhead



# Public Input Open House

## Funding Sources



**Total Cost: \$7.1 Million**  
No Special Assessments

## Quick Facts

- Shared-Use Path – 10' Wide, 2' Shoulders
- Pedestrian Bridge – 12' Clear Width, ~670' Length
- Bridge and Path above 100-Year Flood Elevation

## Estimated Timeline



STBG – Surface Transportation Block Grant  
TA – Transportation Alternatives  
CRP – Carbon Reduction Program

**Red River  
Pedestrian Bridge**  
40th Ave. S Fargo/  
50th Ave. S Moorhead

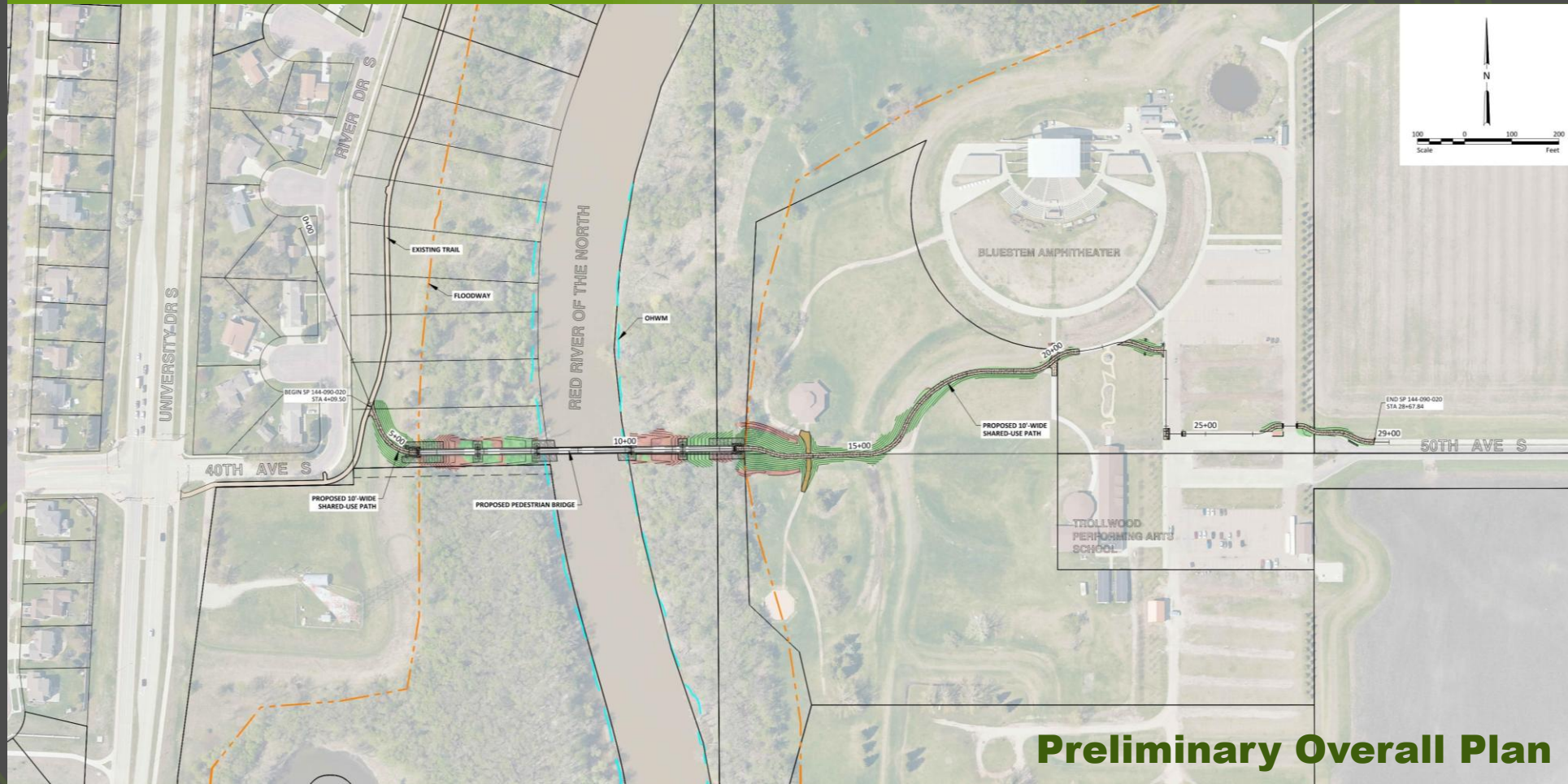
 **HOUSTON**  
engineering, inc.



THE CITY OF  
**Fargo**  
FAR MORE

**m**  
DEPARTMENT OF  
TRANSPORTATION

# Public Input Open House

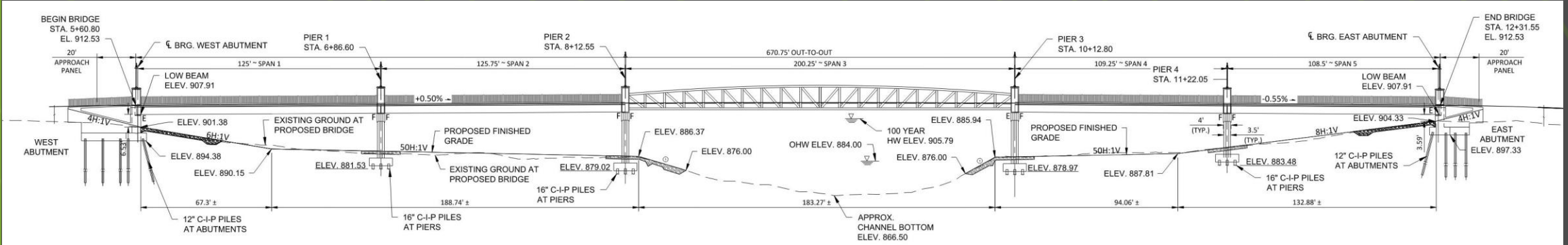


**Preliminary Overall Plan**

**Red River  
Pedestrian Bridge**  
40th Ave. S Fargo/  
50th Ave. S Moorhead



# Public Input Open House



Preliminary Bridge Profile

**Red River  
Pedestrian Bridge**  
40th Ave. S Fargo/  
50th Ave. S Moorhead



# Public Input Open House



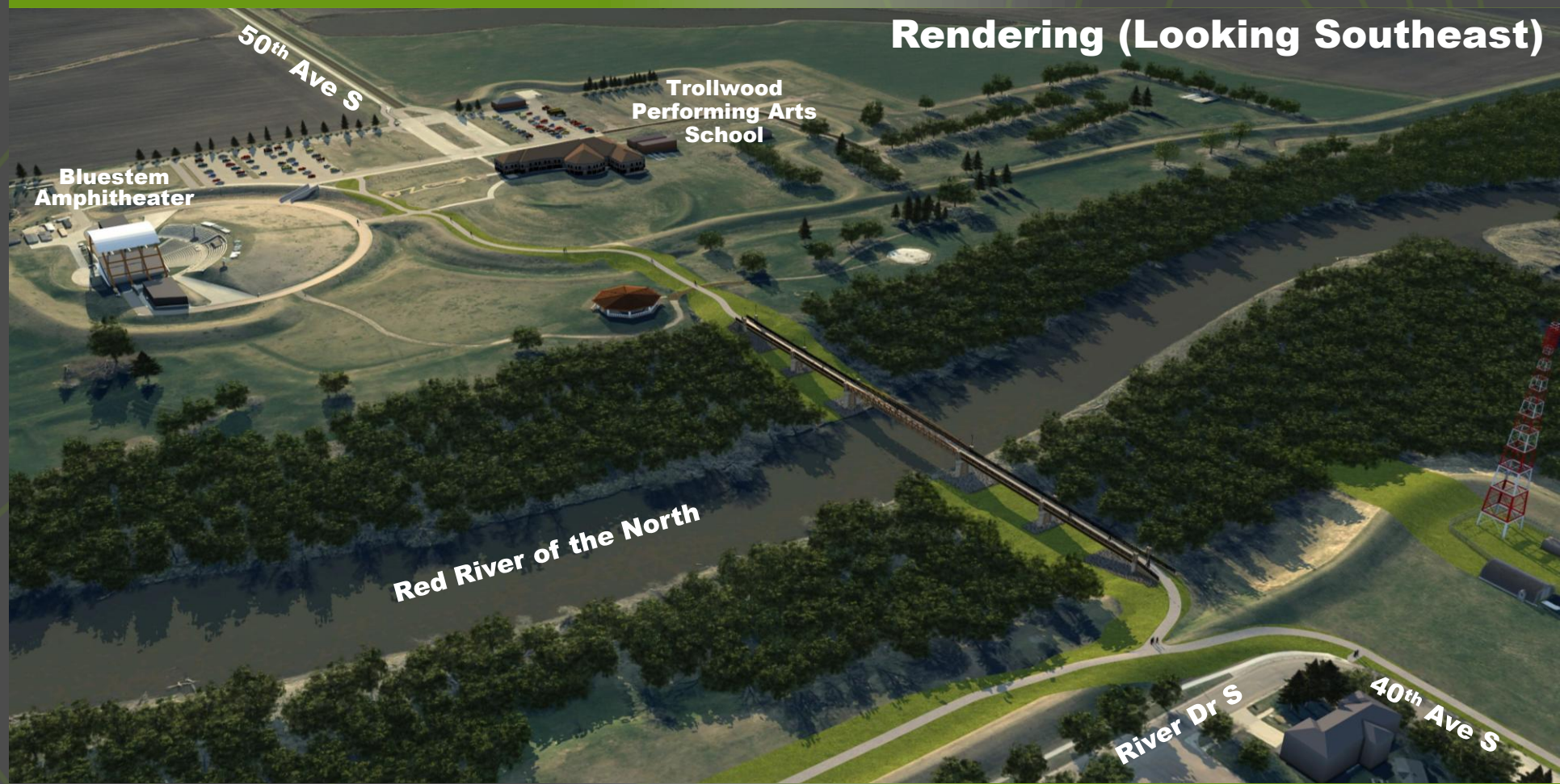
Rendering (Orbiting Flyover)

**Red River  
Pedestrian Bridge**  
40th Ave. S Fargo/  
50th Ave. S Moorhead



# Public Input Open House

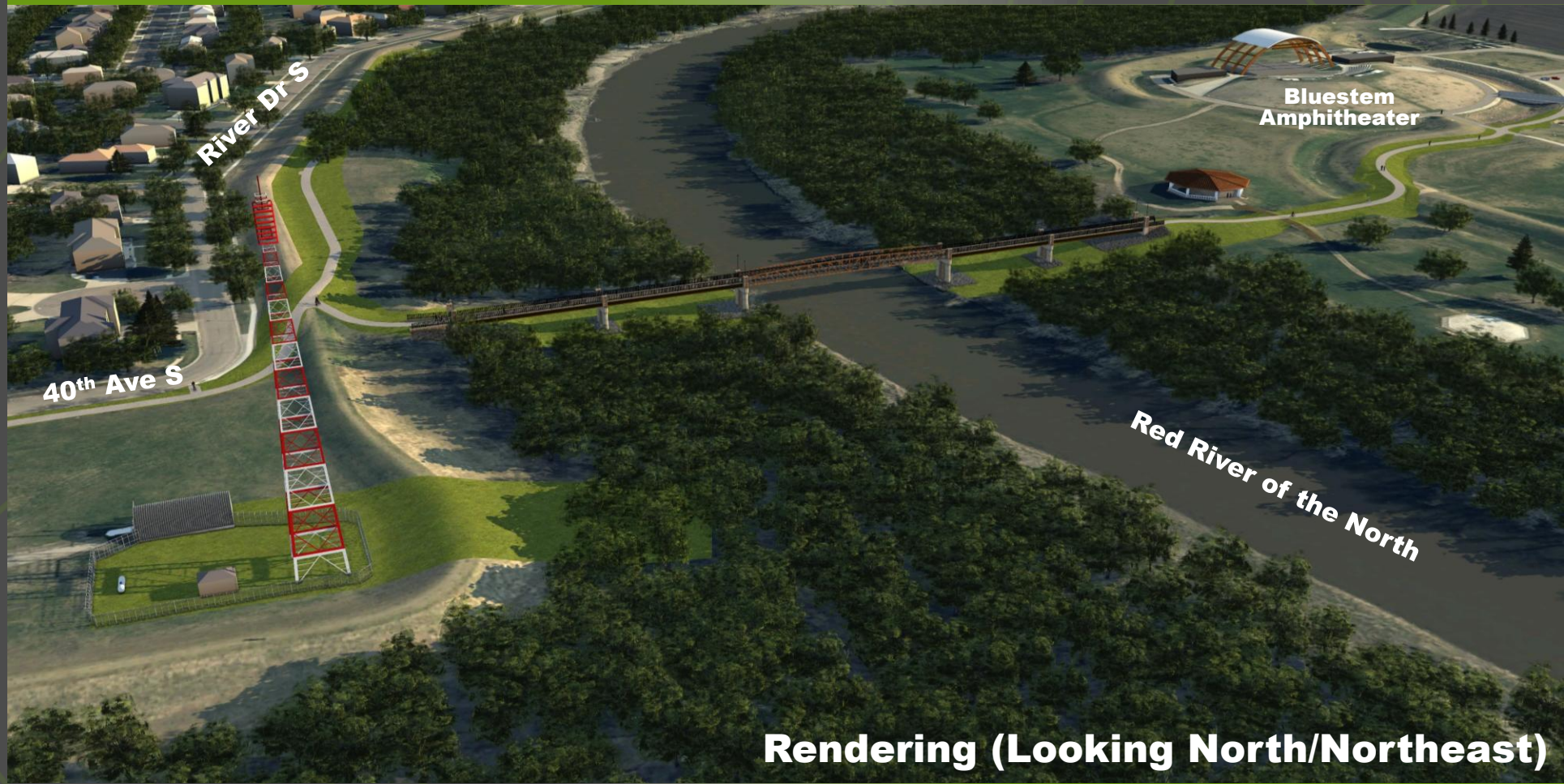
Rendering (Looking Southeast)



**Red River  
Pedestrian Bridge**  
40th Ave. S Fargo/  
50th Ave. S Moorhead



# Public Input Open House



Rendering (Looking North/Northeast)

**Red River  
Pedestrian Bridge**  
40th Ave. S Fargo/  
50th Ave. S Moorhead



# Public Input Open House



**Red River  
Pedestrian Bridge**  
40th Ave. S Fargo/  
50th Ave. S Moorhead



# Public Input Open House



**Bluestem  
Amphitheater**

**Trollwood  
Performing Arts  
School**

**Red River of the North**

**Rendering (Looking East/Northeast)**

**Red River  
Pedestrian Bridge**  
40th Ave. S Fargo/  
50th Ave. S Moorhead

 **HOUSTON**  
engineering, inc.



THE CITY OF  
**Fargo**  
FAR MORE

**m**  
DEPARTMENT OF  
TRANSPORTATION

# Public Input Open House



**Red River  
Pedestrian Bridge**  
40th Ave. S Fargo/  
50th Ave. S Moorhead

