

December 13, 2025

**RE: Beaumont St Inlet Improvements Project – Construction Notice**

Dear Property Owner/Neighbor:

The Portland Department of Public Works (DPW) would like to notify you of the anticipated start of construction for the proposed improvements to the existing storm drain inlet located within the drainage easement on 80 Hicks St and the City right of way running between Beaumont St and Hicks St. The project was awarded to Gorham Sand & Gravel and they plan on completing the work this winter. The contractor is expected to mobilize to the site within the next month at the earliest. The construction duration for this work is anticipated to be about two (2) weeks.

Project Goals:

- To improve inlet capacity and reduce flooding in the vicinity of 80 Hicks St and 26 Beaumont St.

To achieve these goals this project will include:

- The installation of a new 24" reinforced concrete flared end storm drain inlet in the location of the existing storm drain inlet.
- The upsizing of approximately 12 LF of storm drain pipe from 15" to 24" diameter.
- The installation of a riprap apron between the existing storm drain outfall and inlet.

The attached design drawings will assist in defining the project scope and boundaries.

Project work will typically run from Monday to Friday between 7:00am and 7:00pm. If for unforeseen circumstances the contractor needs to interrupt driveway access or come onto private property, sufficient notice will be given prior to the disruption. The contractor will be using heavy equipment during the project. We ask you to use caution when driving through the work zones and be aware of equipment and personnel for the safety of all.

During the project, a section of the street will be posted "No Parking" as necessary. This is done to protect your vehicles and to make moving around the site easier and safer for the contractor. We restrict parking only when absolutely necessary, so please make sure you read the signs. Vehicles will be towed if in violation. The contractor will be stockpiling necessary materials for the project within the drainage easement and along the side of the road within the City right of way.

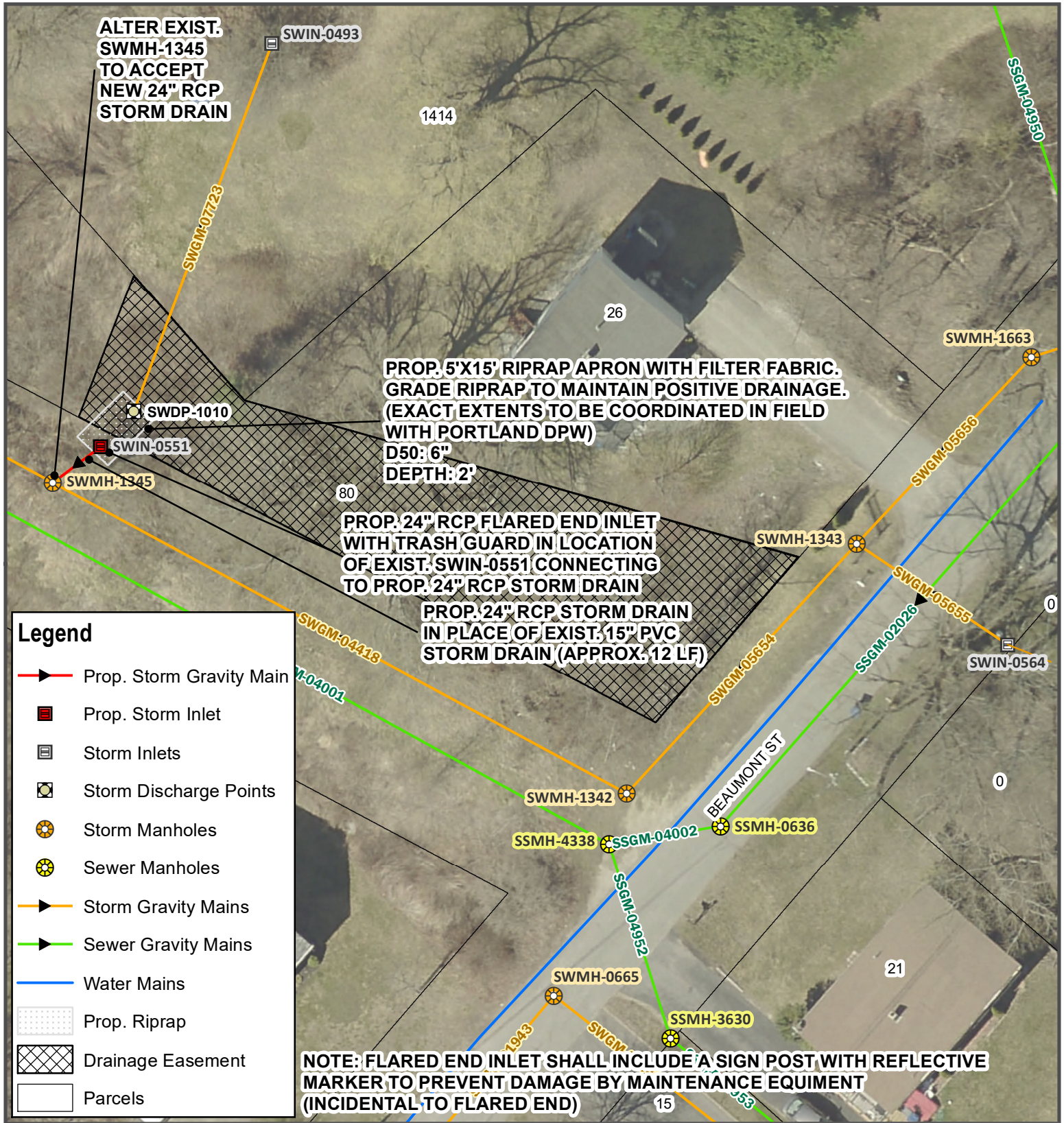
A City engineer will be available on a daily basis to help assist with any issues which may come up during construction.

Please reach out via email or phone if you have any questions.

Sincerely,

A handwritten signature in blue ink that reads "Reed Allen". The signature is written in a cursive style with a large initial "R".

Reed Allen, P.E.  
Water Resources Project Engineer  
Email: [RHAllen@portlandmaine.gov](mailto:RHAllen@portlandmaine.gov)  
Phone: (207) 874-8828



**ALTER EXIST. SWMH-1345 TO ACCEPT NEW 24" RCP STORM DRAIN**

**PROP. 5'X15' RIPRAP APRON WITH FILTER FABRIC. GRADE RIPRAP TO MAINTAIN POSITIVE DRAINAGE. (EXACT EXTENTS TO BE COORDINATED IN FIELD WITH PORTLAND DPW)  
D50: 6"  
DEPTH: 2'**

**PROP. 24" RCP FLARED END INLET WITH TRASH GUARD IN LOCATION OF EXIST. SWIN-0551 CONNECTING TO PROP. 24" RCP STORM DRAIN**

**PROP. 24" RCP STORM DRAIN IN PLACE OF EXIST. 15" PVC STORM DRAIN (APPROX. 12 LF)**

**Legend**

- Prop. Storm Gravity Main
- Prop. Storm Inlet
- Storm Inlets
- Storm Discharge Points
- Storm Manholes
- Sewer Manholes
- Storm Gravity Mains
- Sewer Gravity Mains
- Water Mains
- Prop. Riprap
- Drainage Easement
- Parcels

**NOTE: FLARED END INLET SHALL INCLUDE A SIGN POST WITH REFLECTIVE MARKER TO PREVENT DAMAGE BY MAINTENANCE EQUIPMENT (INCIDENTAL TO FLARED END)**



**2025-2028 NEIGHBORHOOD DRAINAGE AND SEWER SYSTEM REPAIR CONTRACT  
BEAUMONT ST INLET IMPROVEMENTS**

| REV | SUBMISSION | DATE |
|-----|------------|------|
|     |            |      |
|     |            |      |
|     |            |      |

**PROJECT ID  
SW-01**  
PAGE 6 OF 21  
JULY 2025

DESIGN BY: RHA | DRAWN BY: RHA | CHECK BY: JRP

0 15 30  
Feet

CITY OF PORTLAND, MAINE  
DEPT. OF PUBLIC WORKS  
212 CANCO ROAD, PORTLAND, MAINE 04103  
PHONE (207) 874-8846 FAX (207) 874-8852