

# Hersey Street Sewer Separation Project

December 04<sup>th</sup>, 2024  
Neighborhood Meeting

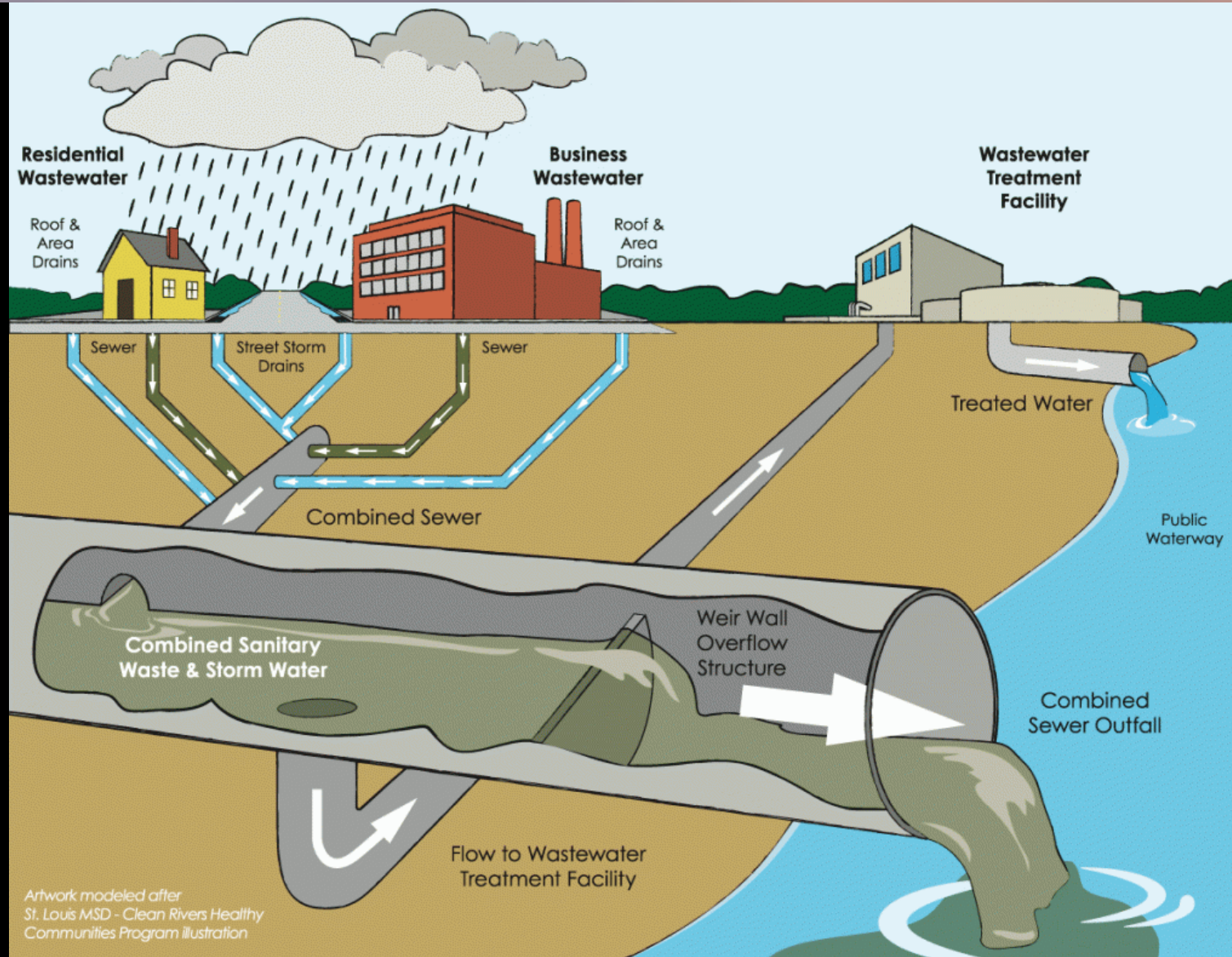


# Neighborhood Meeting Agenda

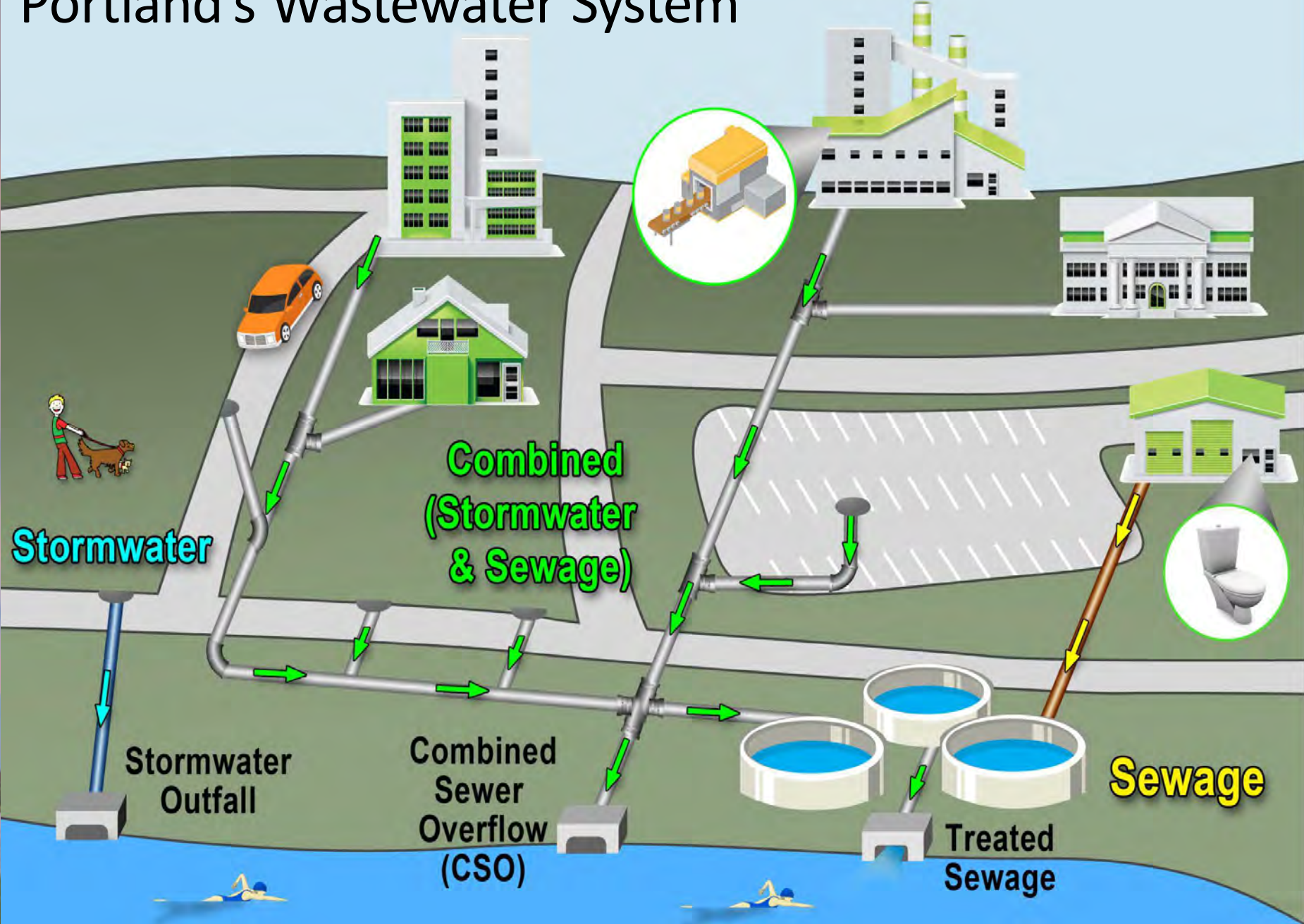
- **Introductions**
- **Combined Sewer Overflow overview**
- **Project Goals**
- **Project Overview**
- **Project Description**
- **What to expect during construction**
- **Sequencing of the project**
- **Project Discussion / Questions**



# Combined Sewer Overflows (CSO)



# Portland's Wastewater System



# Portland's Back Cove Outfalls in 2018



# Portland's Back Cove Outfalls in 2025

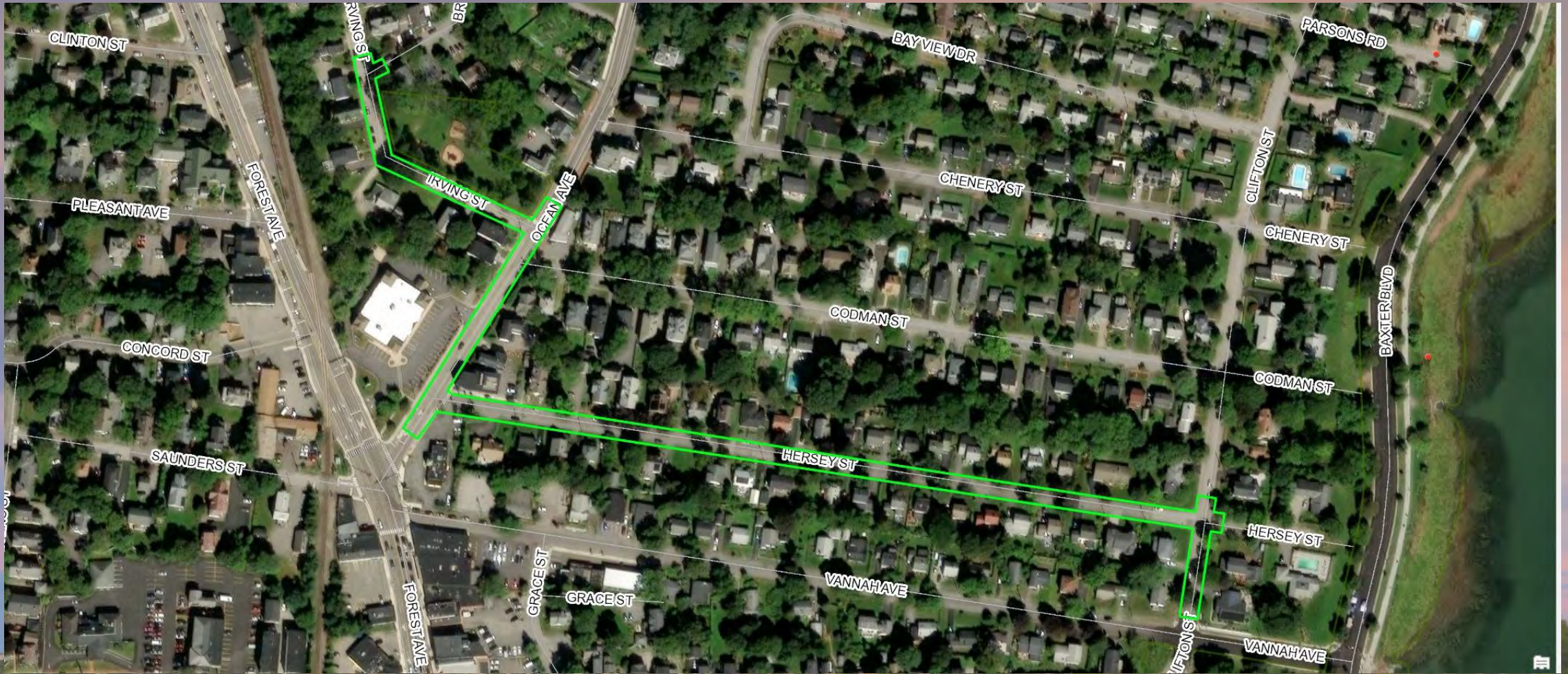


# Project Goals

- Reduce CSO Discharge in Back Cove by installing new storm drains
- Reduce overflows that go to the new Back Cove West Storage Tank.
- Help the City comply with EPA Long Term Control Plan requirements for CSO reduction
- Help improve and protect the water quality in Back Cove and Casco Bay
- Build a new storm drain that can convey a 25 year storm event
- Replace the existing sewer main built in 1925 which is in poor condition
- Improving pedestrian access by installing a new concrete sidewalk on Clifton St from Vannah Ave to Hersey St and a new paved sidewalk on Hersey St.
- Portland Water District will be replacing the existing water main and services built in 1933



# Project Overview



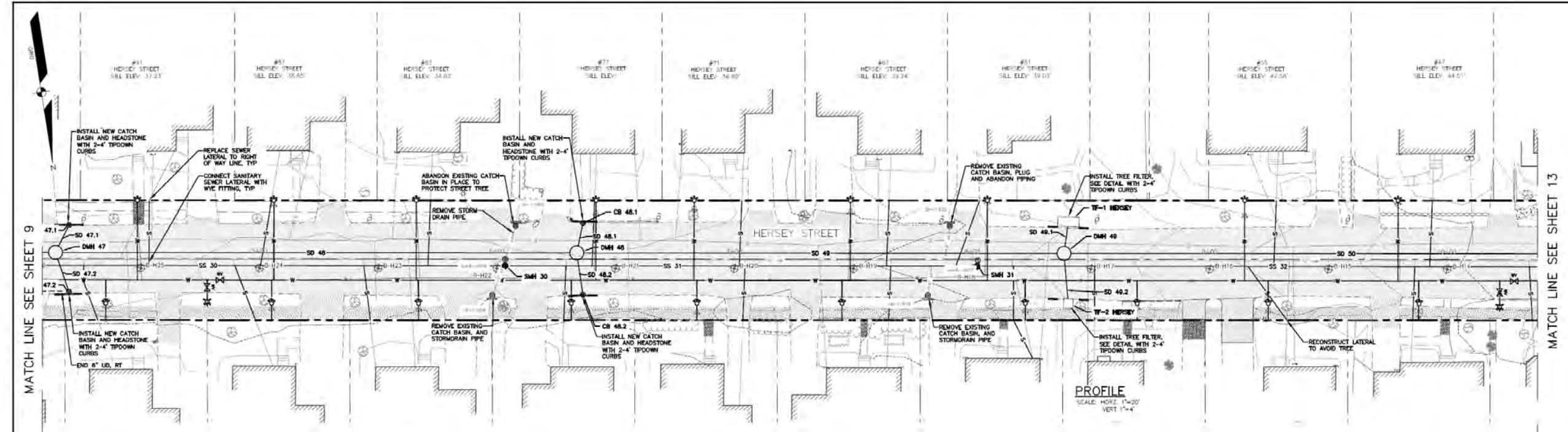
# Project Description

- New 10" – 30" storm drain and 8" sewer main will be installed within the following streets:
  - Phase 1
    - Clifton Street (Vannah Ave to Hersey St)
    - Hersey Street (Clifton St to Ocean Ave)
  - Phase 2
    - Ocean Ave (Hersey St to Irving St)
    - PWD – Irving St (Ocean Ave to Bryant St)
- The project will construct 3,470 ft in phase 1 plus 1,000 ft in phase 2 of new storm drains and new sewer mains
- The streets within work area will be repaired with a new pavement overlay installed
- Hersey St will get a new paved sidewalk on the even side of the street
- New handicap ramps and crosswalks will be installed at existing crossing locations
- PWD will install 1,500 feet of 8" & 25 feet of 12" DI water main for phase 1 and 645 feet of 8" and 550 feet of 12" on phase 2
- Current estimates
  - Phase 1: City = \$2,707,629      PWD = \$1,230,845
  - Phase 2: City = \$765,986      PWD = \$1,155,395



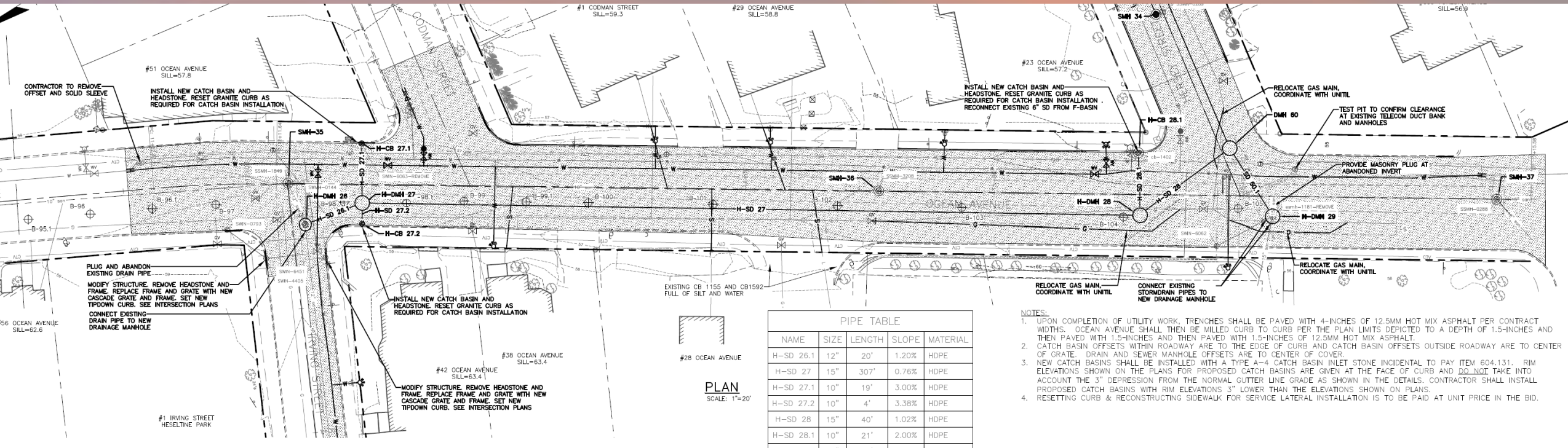


# Hersey Street – 2 of 3

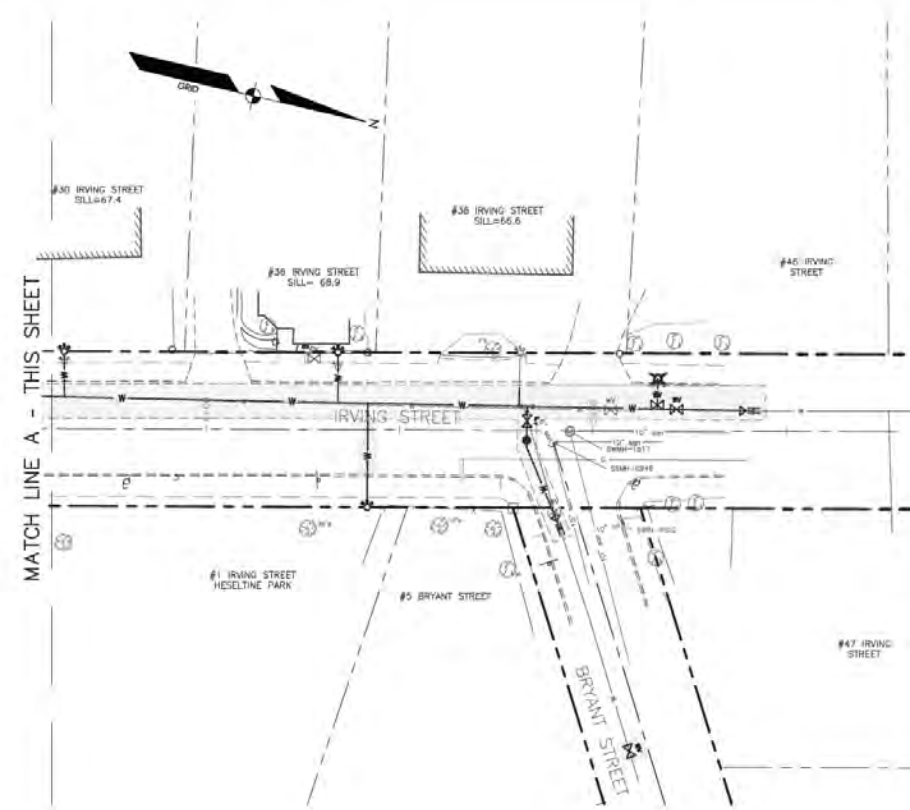
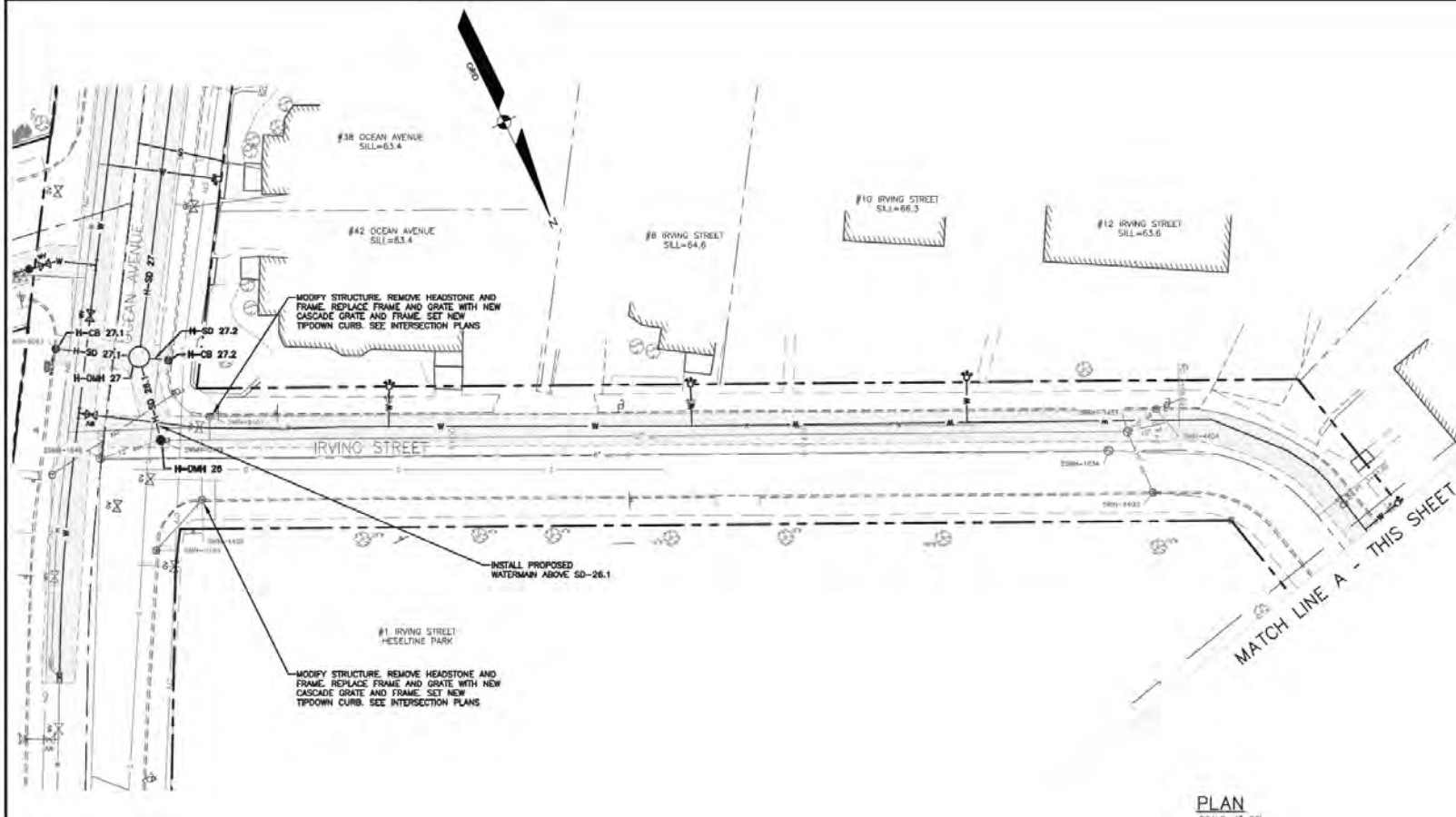




# Ocean Avenue



# Irving Street



# What to expect during the Project

- Noise – Ledge removal
- Large equipment and machines around
- Traffic disruptions, backups, slow – especially on Ocean Avenue
- Hersey St will be closed to local traffic only
- Ocean Ave will be one way from Walton St to Forest Ave.
- Temporary disruptions to driveways, water and sewer lines (contractor must provide notification)
- Temporary water lines will be installed running across yards and connecting to houses
- Dust- Contractor required to control dust but it can still get dusty at times
- Professional interactions with Contractor- let us know if this doesn't happen.



# Sequencing of project

- Start of Construction Late March- Early April 2025
- Project will start by mobilizing to the site and installing construction signage
- Installation of temporary water
- April, contractor will start storm, sewer, water work starting on Clifton St at Vannah Ave and heading towards Hersey St
- Contractor will then start installing storm, sewer and water in Hersey St from Clifton St to Ocean Ave
- Spring 2026 Phase 2 will be working in Ocean Ave from Hersey St to Irving St
- Ocean Ave will be one way with traffic at Forest directed to go to Walton St. Traffic on Ocean will only go from the School to Forest
- Portland Water District will be installing new water mains in Irving from Ocean Ave to Bryant St
- A concrete sidewalk on Clifton will be installed from Vannah Ave to Hersey St
- A bituminous paved sidewalk on Hersey St will be installed from Clifton St to Ocean Ave on the even side of the street
- Base Paving of trenches will occur throughout the project as work is completed
- Surface paving of Hersey St and Ocean Ave will occur after the project has had a winter cycle and will be full width
- Project will be substantially complete Fall of 2026

# Tree Removal

10 trees out of 40 total

19 existing trees are Norway Maples

## PWD Service Conflicts

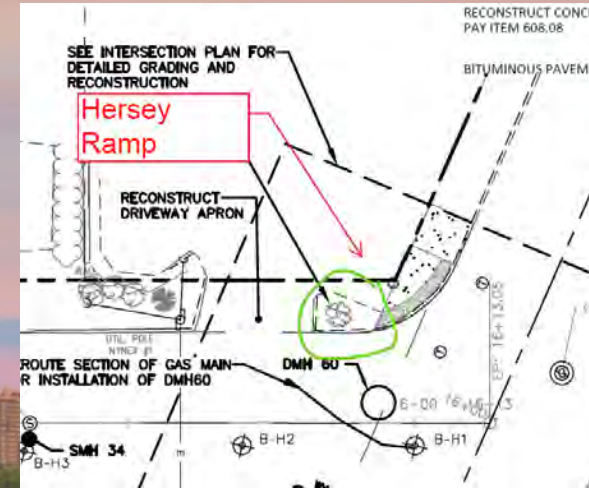
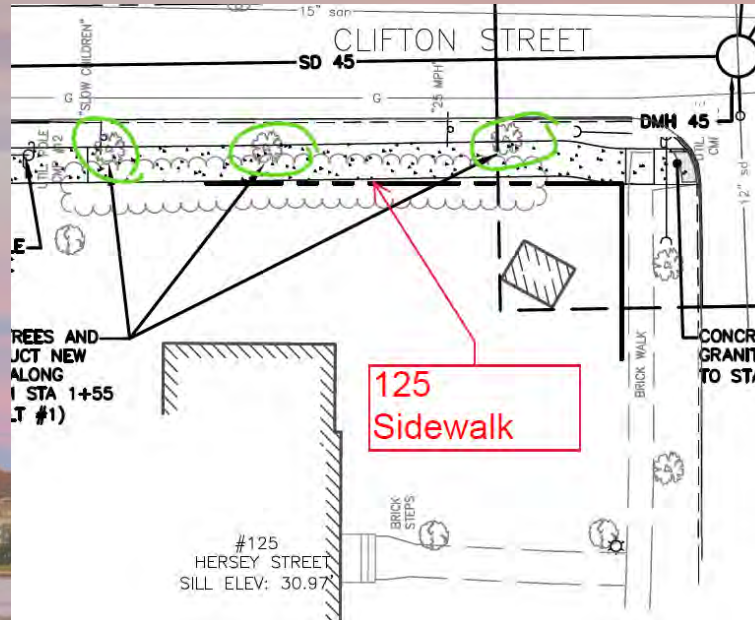
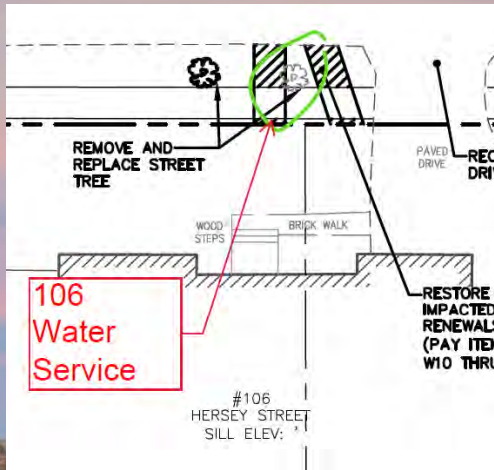
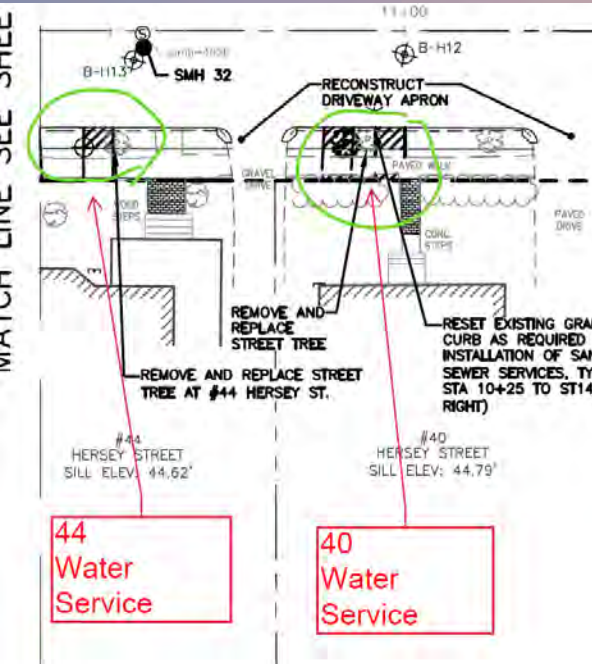
- 40 – Pear Callery
- 44 – Norway Maple
- 106 – Norway Maple

## Concrete Sidewalk on Clifton

- 125 – 3 Norway Maples and Multiple Burning Bushes

## Hersey HC Ramp

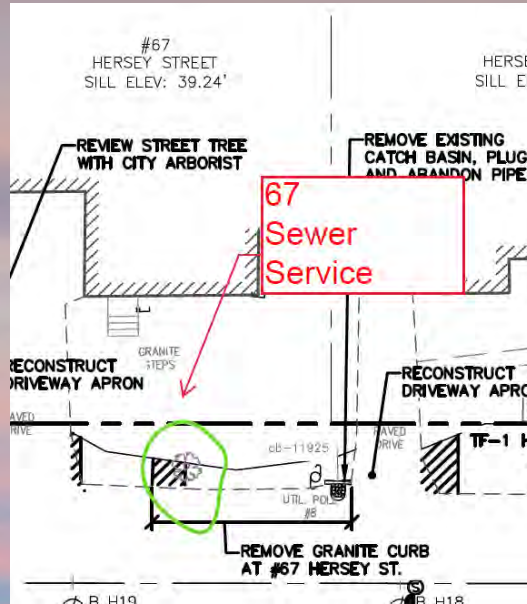
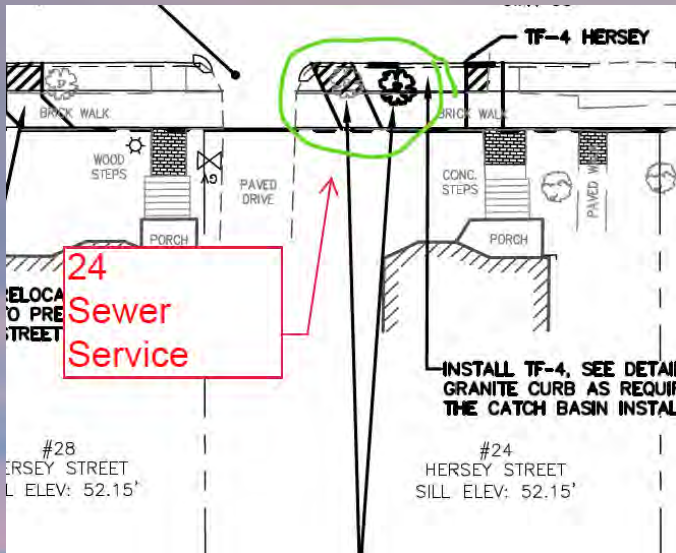
- 1 Pear Callery



# Tree Removal

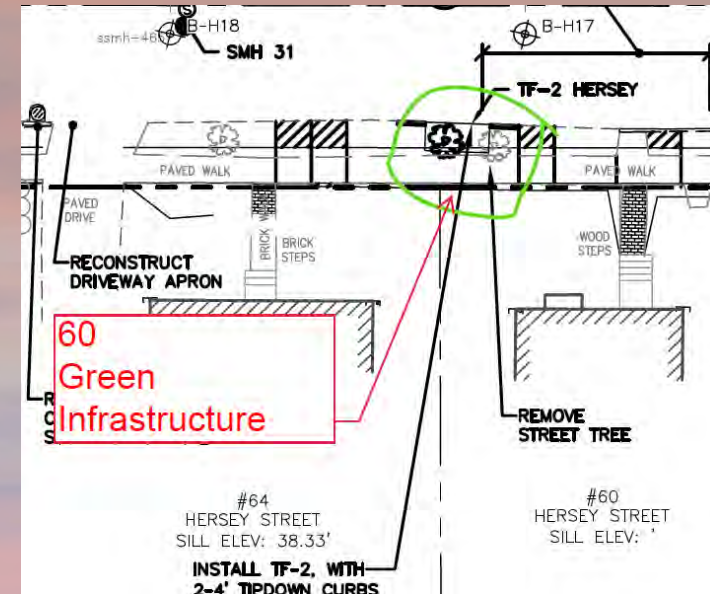
## Sewer Service Conflicts

- 24 – Norway Maple
- 67 – Norway Maple

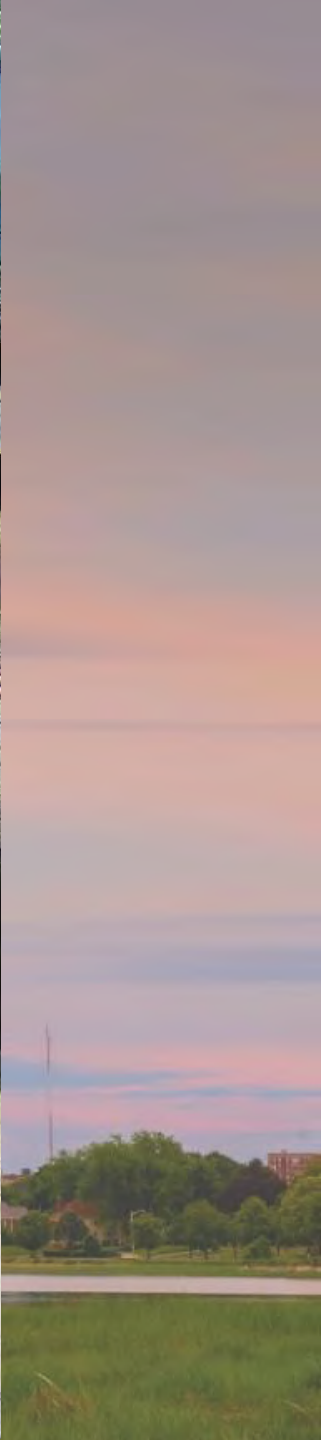


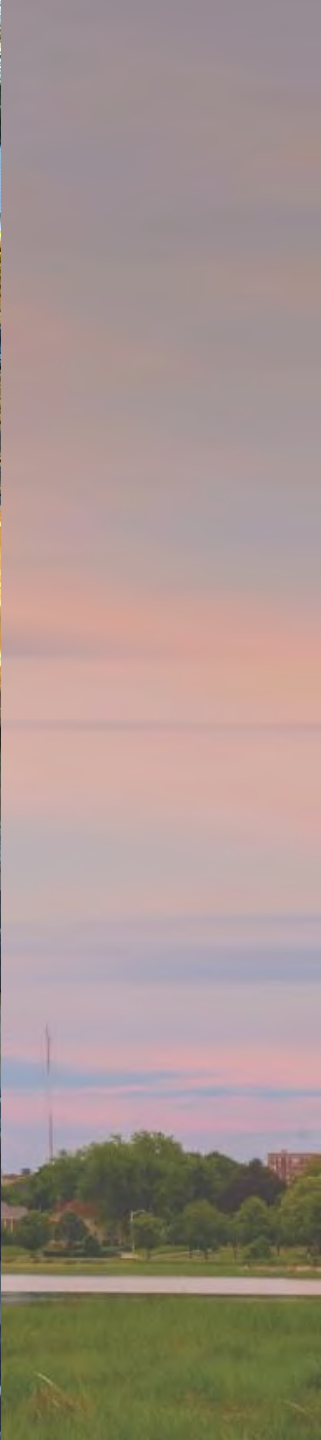
## Green Infrastructure Conflict

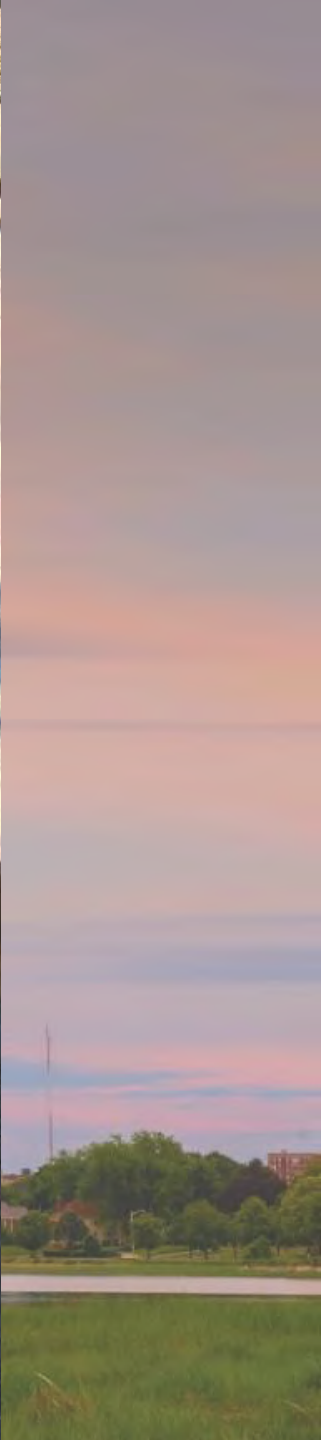
- 60 - Norway Maple



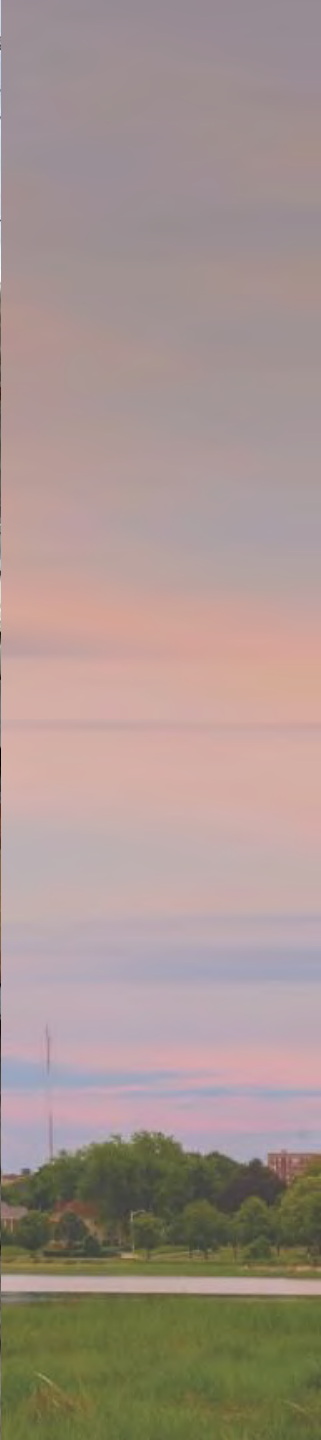


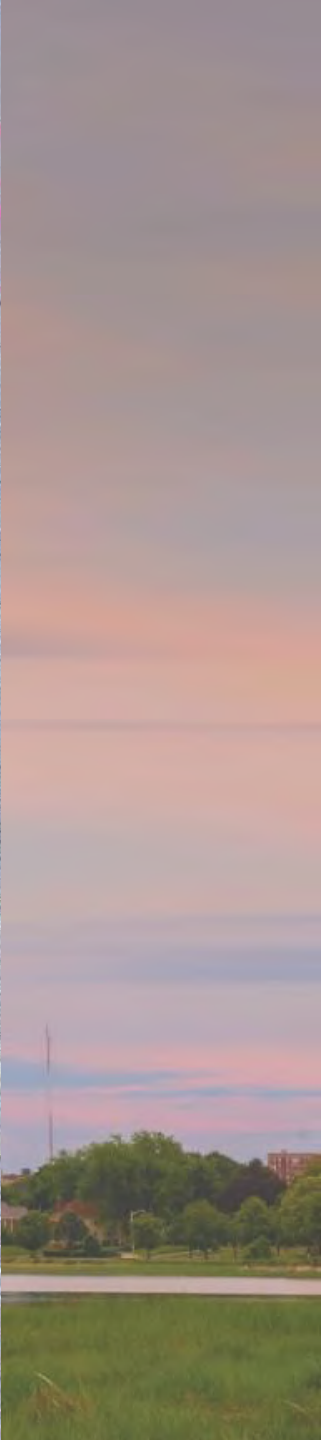












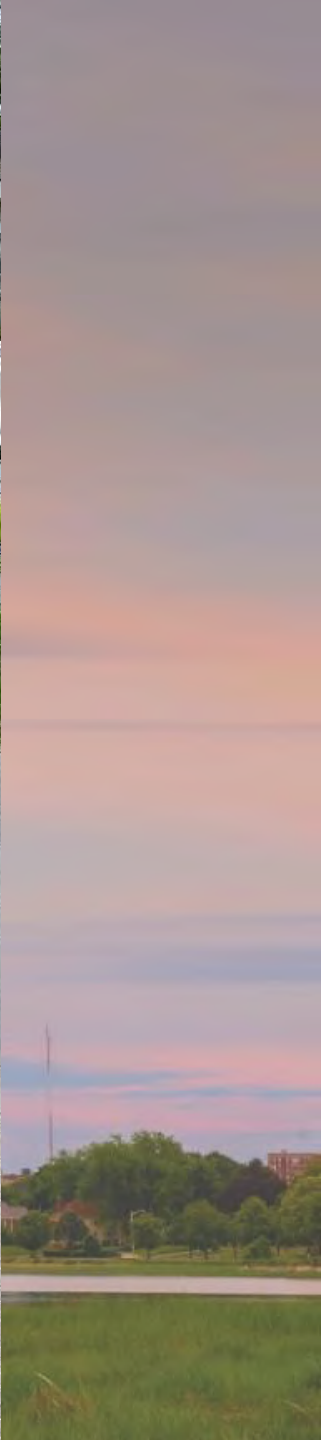








NO STOP



# Questions?

- Please sign the sign in sheet!
- [nhs@portlandmaine.gov](mailto:nhs@portlandmaine.gov)

