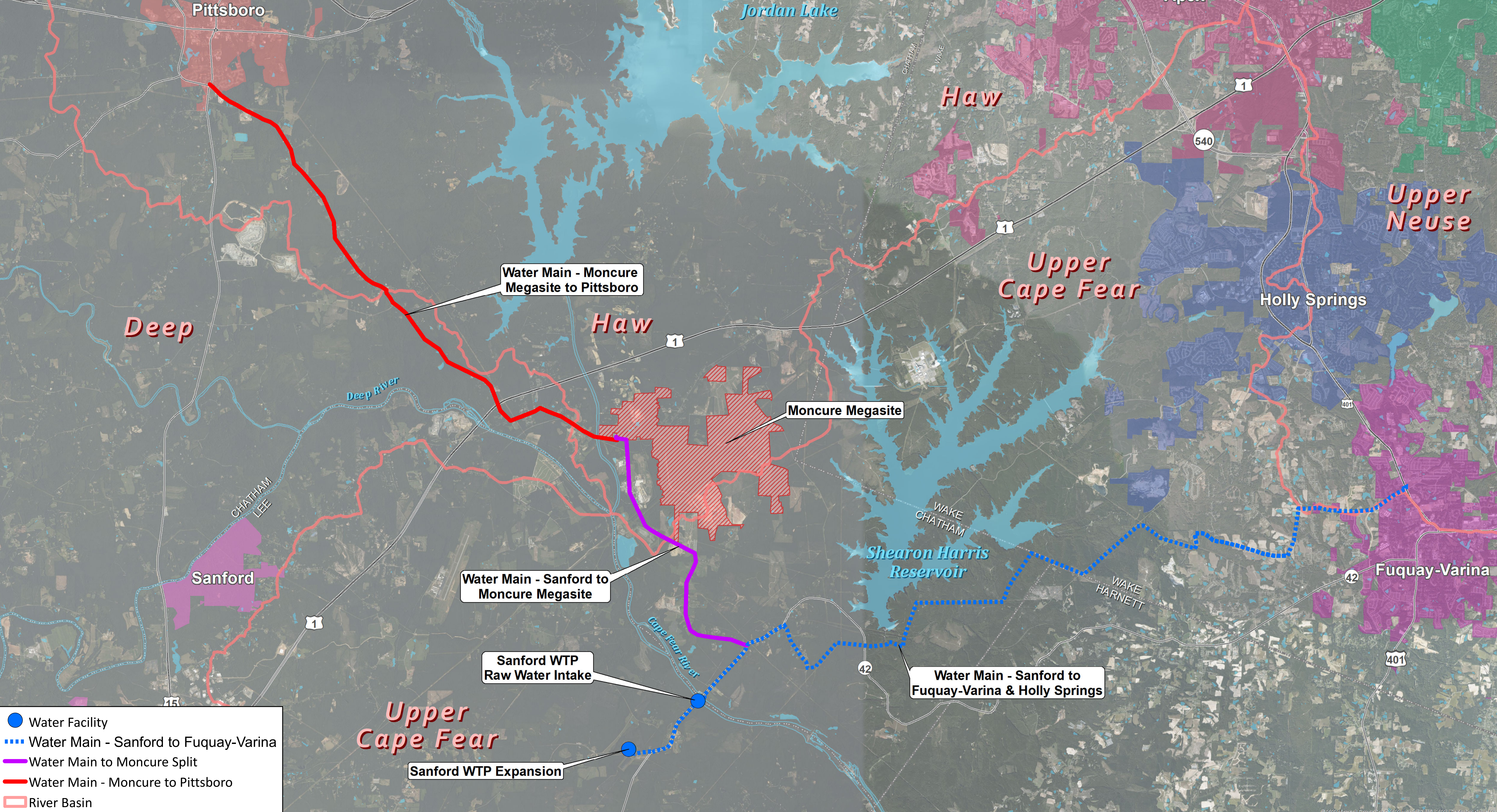




Water Treatment Plant Expansion from 12 MGD to 30 MGD	\$168,914,000
Transmission and System Improvements to Fuquay-Varina/Holly Springs	\$90,153,000
Transmission and System Improvements to Chatham County/Pittsboro	36,827,000
<b>TOTAL</b>	<b>\$295,894,000</b>



- Water Facility
- ⋯ Water Main - Sanford to Fuquay-Varina
- Water Main to Moncure Split
- Water Main - Moncure to Pittsboro
- River Basin

Location: GFD20197 / H:\WR\_PLANNING\Working\Sanford\_Pittsboro\_Study\W\_WW\_Sanford\_Pittsboro\_25Jan2019\_NoChathamPlan.mxd

© 2022 Microsoft Corporation. © 2022 Wake County. © 2022 Chatham County. © 2022 Fuquay-Varina. © 2022 Holly Springs.