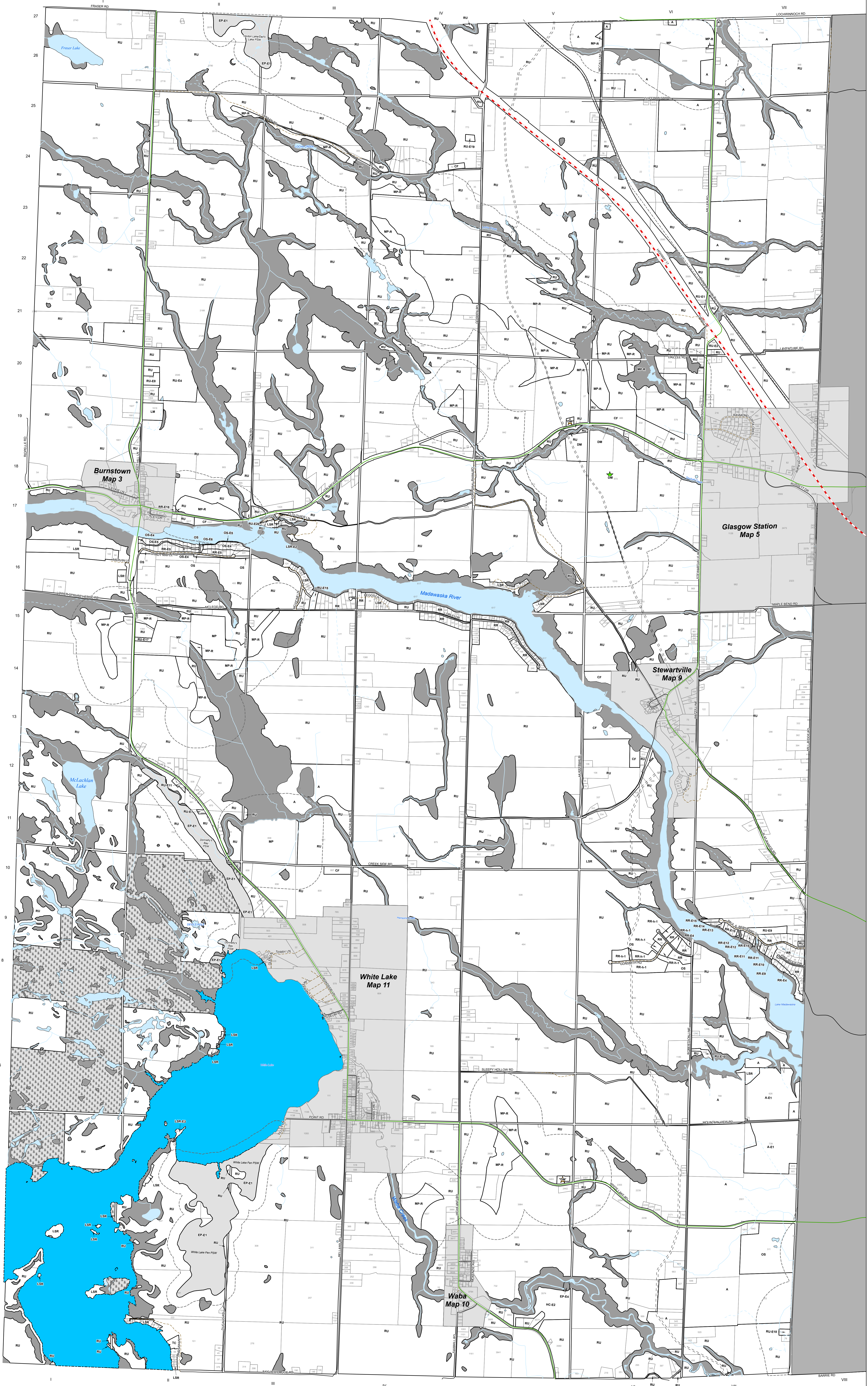


**Township of McNab/Braeside
Zoning By-law
Schedule 'A'
Map 1 - West Half**

- ★ Waste Disposal Site- Active
- ★ Waste Disposal Site- Inactive
- TransCanada Pipeline
- Floodplain
- Trails
- County Road
- Municipal Maintained Road
- Municipal Seasonal Road
- Private Road
- Provincial Highway
- Intermittent- Watercourse
- Permanent- Watercourse
- Property Parcel
- A - Agriculture
- At Capacity Lake
- CF - Community Facility
- CL - Crown Land
- DM - Disposal Industrial
- EP - Environmental Protection
- EP-E1 - Provincially Significant Wetland (PSW)
- - E - Exceptions
- GC - General Commercial
- GM - General Industrial
- HC - Highway Commercial
- LM - Light Industrial
- LSR - Limited Service Residential
- MP - Mineral Aggregate Pit
- MP-R - Mineral Aggregate Pit-Reserve
- MQ - Mineral Aggregate Quarry
- MQ-R - Mineral Aggregate Quarry- Reserve
- MHP - Mobile Home Park
- OS - Open Space
- RU - Rural
- RR - Rural Residential
- TC - Tourist Commercial
- Water
- Separation Distances

Zone	Feature	Required Minimum
DM	Waste Disposal Site	500 metres
EP-E1	Provincially Significant Wetland (PSW)	120 metres
EP-E2	Area of Natural and Scientific Interest - Life Science (ANSI)	120 metres
EP-E3	Area of Natural and Scientific Interest - Earth Science (ANSI)	50 metres
MP and MP-R	Sand and Gravel Resource and Licensed Pit	300 metres
MQ and MQ-R	Bedrock Resource and Quarry	500 metres



Corporation of The
Township of McNab/Braeside

This is Schedule 'A' to the By-law Number _____
Passed the _____ day of _____, 20____.
Signatures of Signing Officers

Mayor _____ CAO/Clerk _____