

Marie Place Residential Development

405-485 Marie Place, Dist. of North Vancouver, B.C.



engage
ARCHITECTURE

FAIRBORNE

Marie Place Residential Development

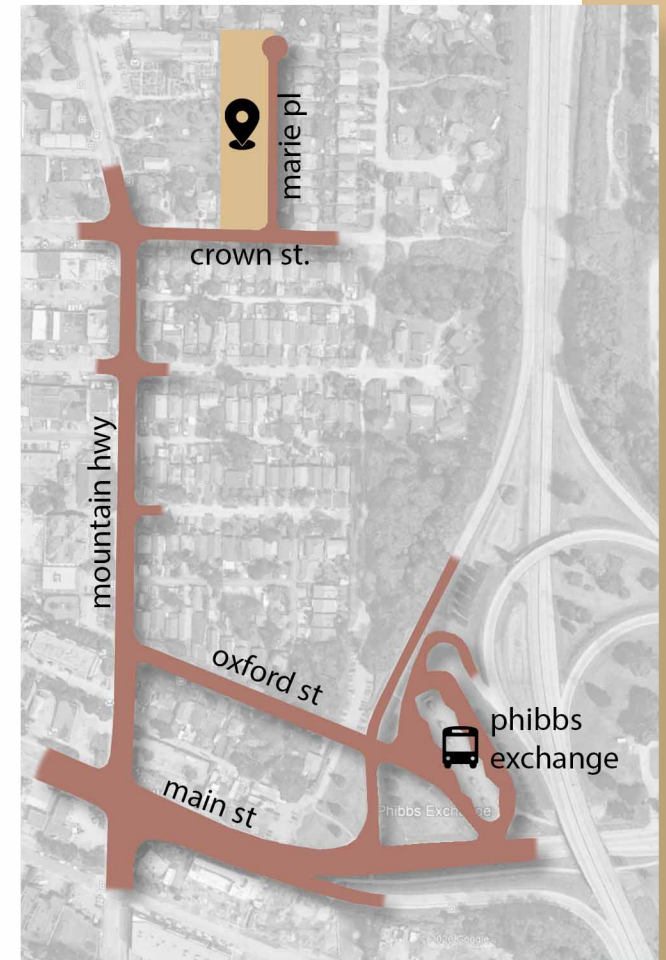
The Proposal

Engage Architecture proposes to construct two 6-storey wood frame mid-rise buildings located at 405-485 Marie Place, at the corner of Crown Street and Marie Place.

The proposal is for 140 residential units which will include 47 one-bedroom units, 74 two-bedroom units, and 19 three-bedroom units.

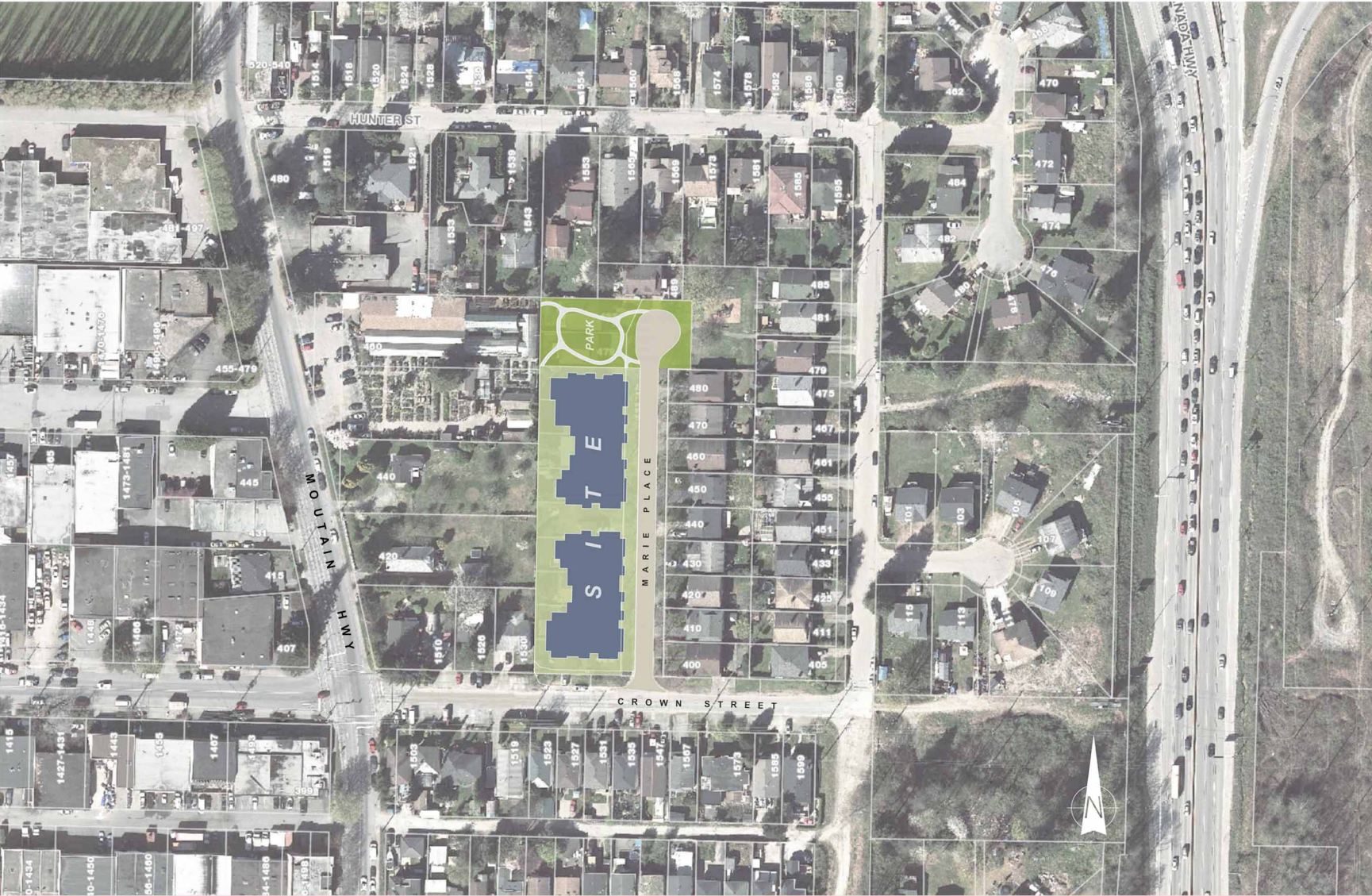
Vehicular access to the site will be from a new commercial lane off of Crown Street. Parking will be located in the underground parking garage and at-grade accessed from the lane. 161 parking spaces are provided for the residents including 14 visitor parking spaces.

The proposal includes land dedications for the future expansion of Marie Place Park, and the purchase of 5 meters of District of North Vancouver land along Marie Place to be included into the development.



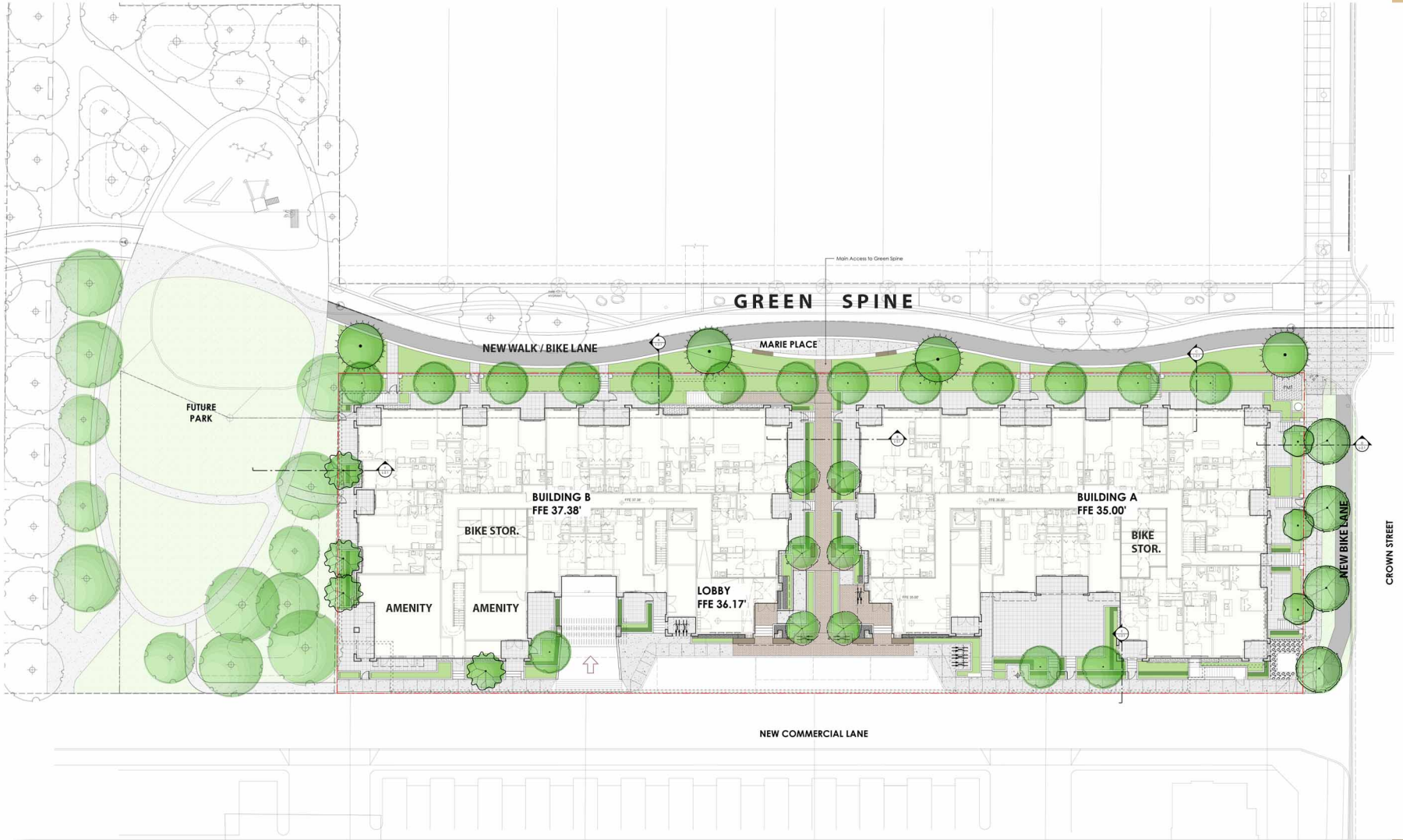
Marie Place Residential Development

Context Site / Neighbourhood Plan



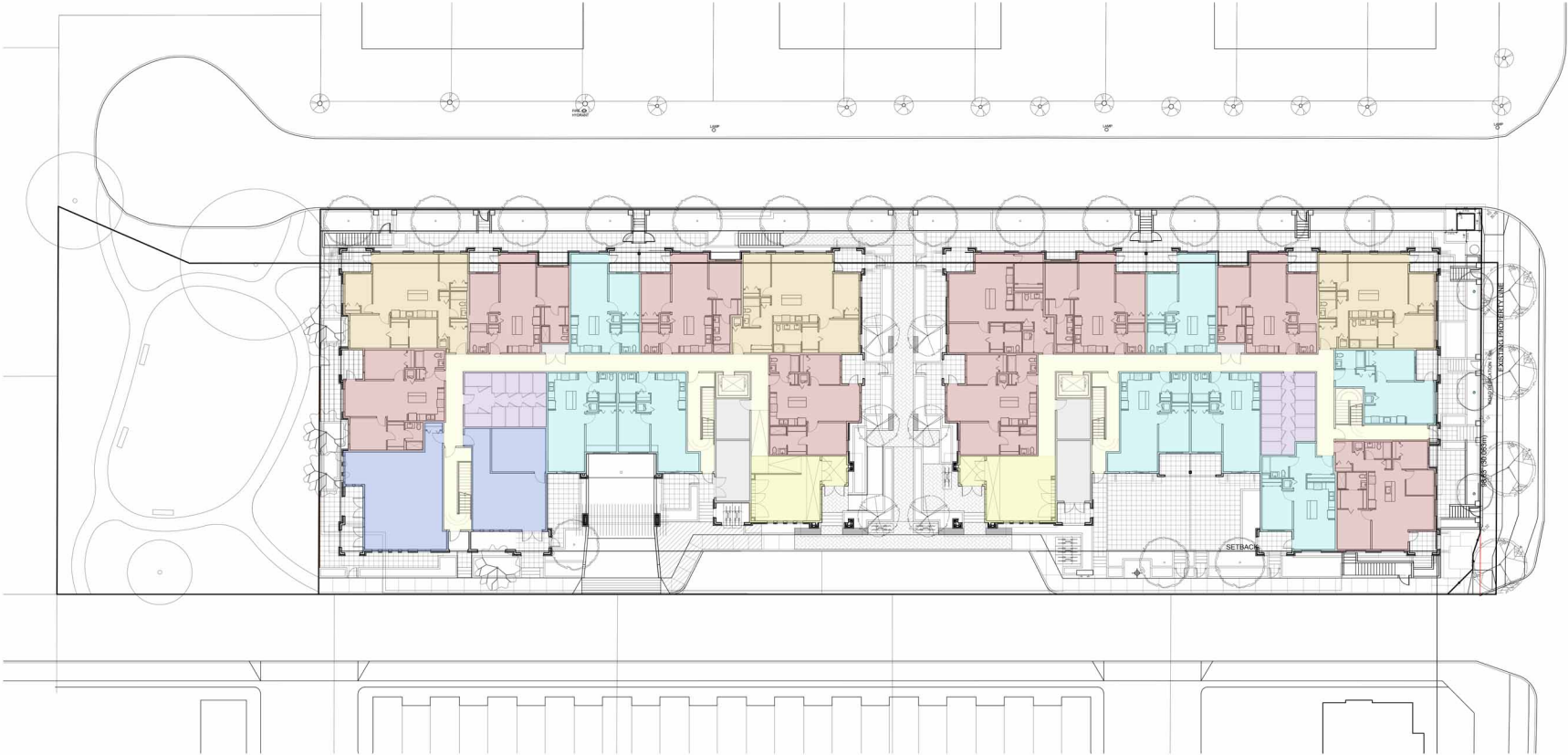
Marie Place Residential Development

Site Plan



Marie Place Residential Development

Ground Floor Plan



- ENTRY LOBBIES
- 1-BEDROOM UNITS
- 2-BEDROOM UNITS
- 3-BEDROOM UNITS
- COMMON BIKE STORAGE
- COMMUNAL AMENITY SPACES

Marie Place Residential Development

Typical Floor Plan (Building A)



- 1-BEDROOM UNITS
- 2-BEDROOM UNITS
- 3-BEDROOM UNITS
- COMMON BIKE STORAGE

Marie Place Residential Development

Building Elevations / Streetscapes



PROPOSED ELEVATION (MARIE PL.)



PROPOSED ELEVATION (LANE)

Marie Place Residential Development

Rendered View at Building Lobbies



- 2 Six-storey mid-rise buildings with ground-oriented homes at grade
- 140 homes, 66 % are 2 & 3 bedroom units
- Housing for:



Families



Workforce



Students



Seniors
(100% basic adaptable homes)



161 parking spaces



Transit-orientated housing, within 400m
(10-minute walk) from Phibbs Exchange



Excellent access to pedestrian and
cycling routes



8,378 sq. ft. of new park land

Marie Place Residential Development

Rendered View at Greenway at Marie Place

