



What is it?

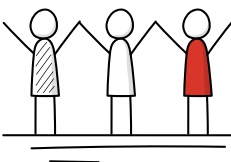
- Proposed ¼-cent (quarter-cent) sales tax increase
- Adds 1¢ for every \$4 spent
- Groceries and prescriptions **not taxed**



Why is it being proposed?

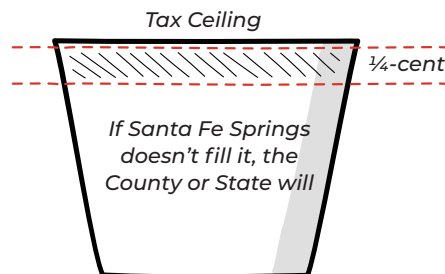
Local funding to support:

- Emergency response and safety
- Parks, recreation, library, youth, and senior services
- Addressing homelessness



Local Control

- All funds stay in Santa Fe Springs
- Annual audits and public reporting



- Why now? New state ceiling Santa Fe Springs must act to keep funds local.
- Local control: **Only Measure L guarantees funds stay here.**
- If not passed: The County or State can take the money, even though residents would still pay.

What's Next?

- Voters decide in November 4, 2025 Special Election
- Learn more at santafesprings.gov/MeasureL

