

# Sea Street Pump Station Force Main No. 3

Nantucket, MA

Additional Requested Improvements and Surface Features  
Impacted Along Force Main Project Route

July 14, 2021

Select Board Presentation

ZIAD F. KARY,  
P.E.  
Senior  
PRINCIPAL

FRANK AYOTTE,  
P.E.  
VICE PRESIDENT

DAVID GRAY  
NANTUCKET SEWER  
DIRECTOR



ENVIRONMENTAL  
 PARTNERS

**Hazen**

# DPW Improvements Requested along Force Main Route (not eligible for funding under Force Main Project)

Sidewalks	Cobble	Crosswalks	Drainage	Bit Conc Restoration
Sea St			Lily St	
Lily St			Liberty St	
Liberty St			Atlantic Ave	
	Winter St			
Pleasant St				Pleasant/ Silver St. (Parking lot Pavement restoration)
		Liberty St		
		India St		
		Hussey St		



# Sea Street Sidewalk Extension

## Additions -

- **#5 Sea St to #13 N. Water Street**
- **67 square yards**
- **Reclaimed granite curbing:**  
120 feet
- **Remove and reset granite curbing:**  
180 feet
- **Brick R&R:**  
67 square yards
- **Brick sidewalk (using like kind material):**  
67 square yards

FIGURE 1 - SEA STREET SIDEWALK CONNECTIVITY



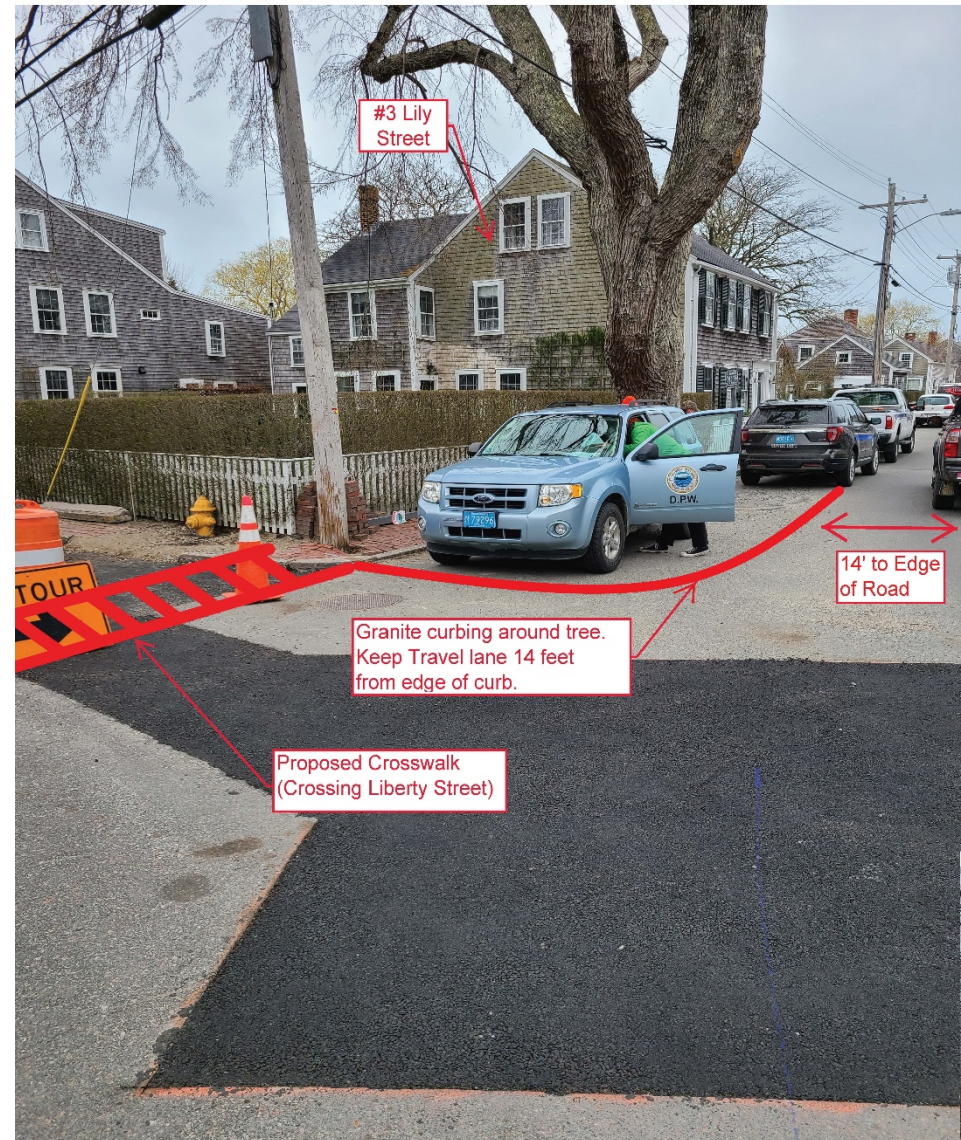
# Lily Street Sidewalk

Additions -

- **Brick sidewalk:** 33 square yards
- **Reclaimed granite curbing:** 55 feet

*\* Reconfiguration of sidewalk and granite curbing for tree protection (tree shown behind DPW vehicle). Travel lane to be 14 feet wide curb-to-curb.*

FIGURE 2 - LILY STREET RECONFIGURATION OF SIDEWALK AND GRANITE CURBING FOR TREE PROTECTION. KEEP TRAVEL LANE 14-FEET FROM THE CURB



# Liberty Street Sidewalk Realignment

Additions -

- **Sidewalk:**  
44 square yards
- **New granite curb:**  
200 feet
- **Storm drain pipe:**  
250 feet
- **Epoxy line paint:**  
255 feet

FIGURE 3 - LIBERTY STREET SIDEWALK REALIGNMENT

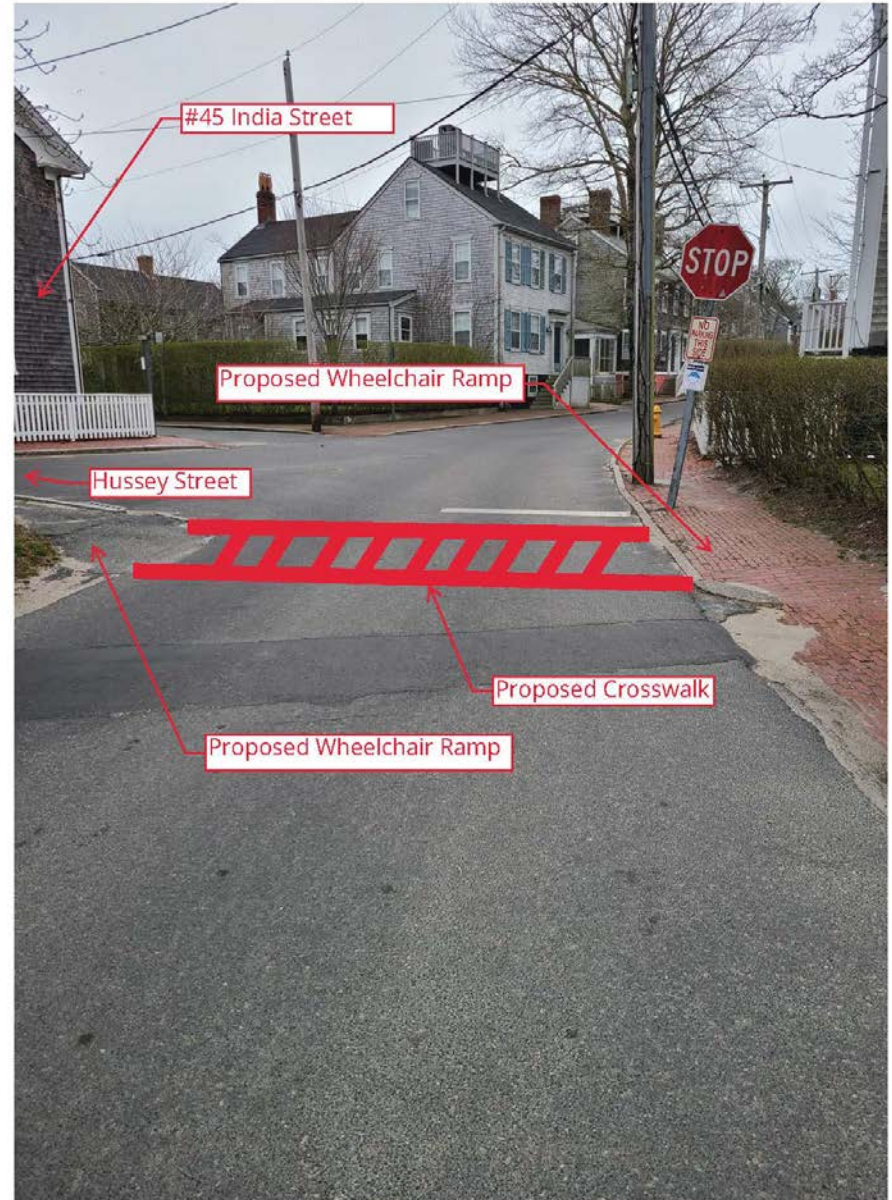


# Liberty Street Crosswalks

Additions -

- **Wheelchair ramps:**  
4 each
- **Crosswalks**

FIGURE 4A - LIBERTY STREET AND HUSSEY STREET CROSSWALK 1

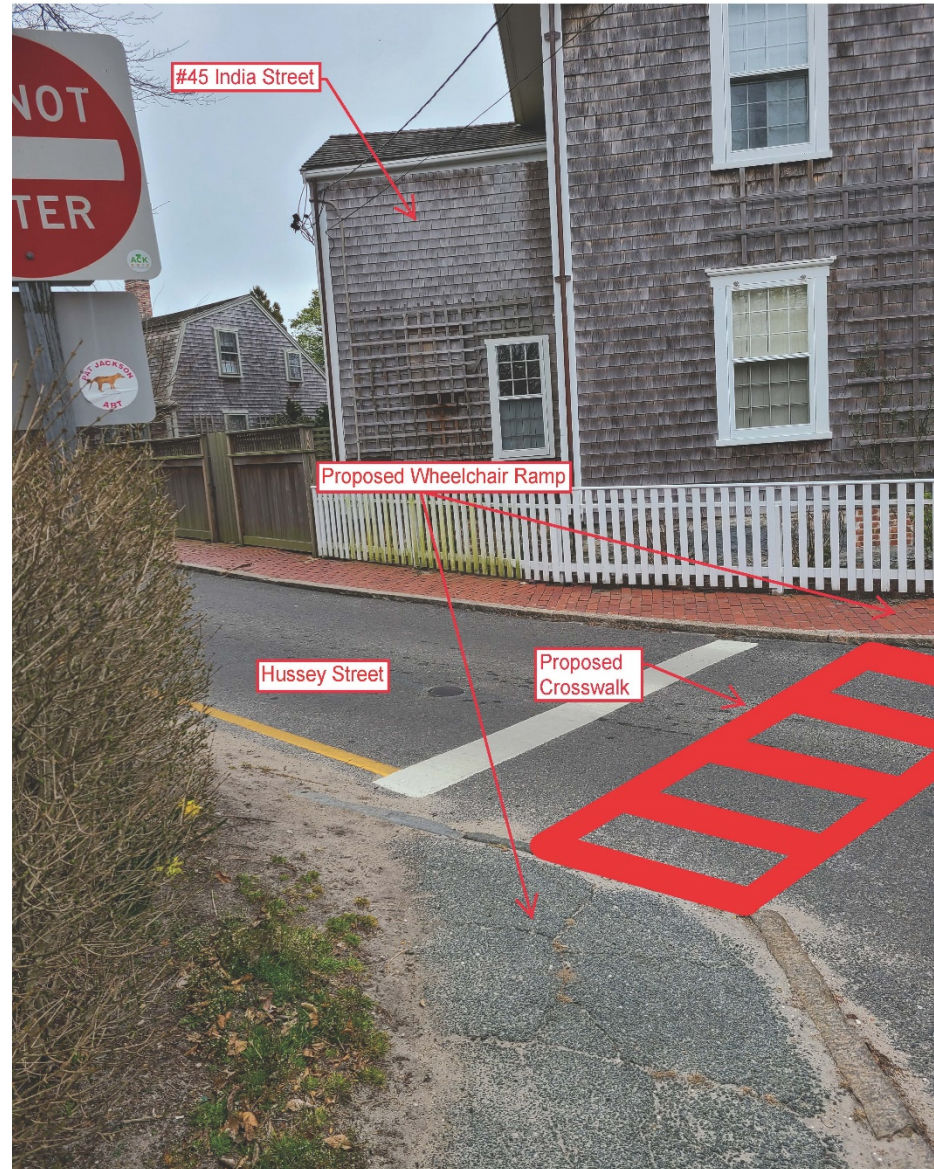


# Liberty Street / Hussey Street Street / India Street

Additions -

- **Crosswalks at Hussey St:**  
2 each
- **Wheelchair ramps:**  
2 each
- **Brick wheelchair ramp and associated sidewalk to replace bituminous pavement in center island.**

FIGURE 4B - LIBERTY STREET AND HUSSEY STREET  
CROSSWALK 2



# Liberty Street Drainage

Additions -

- **Drain pipe:**  
250 feet
- **DMH/CB structures:**  
2 each

FIGURE 5 - LIBERTY STREET DRAINAGE

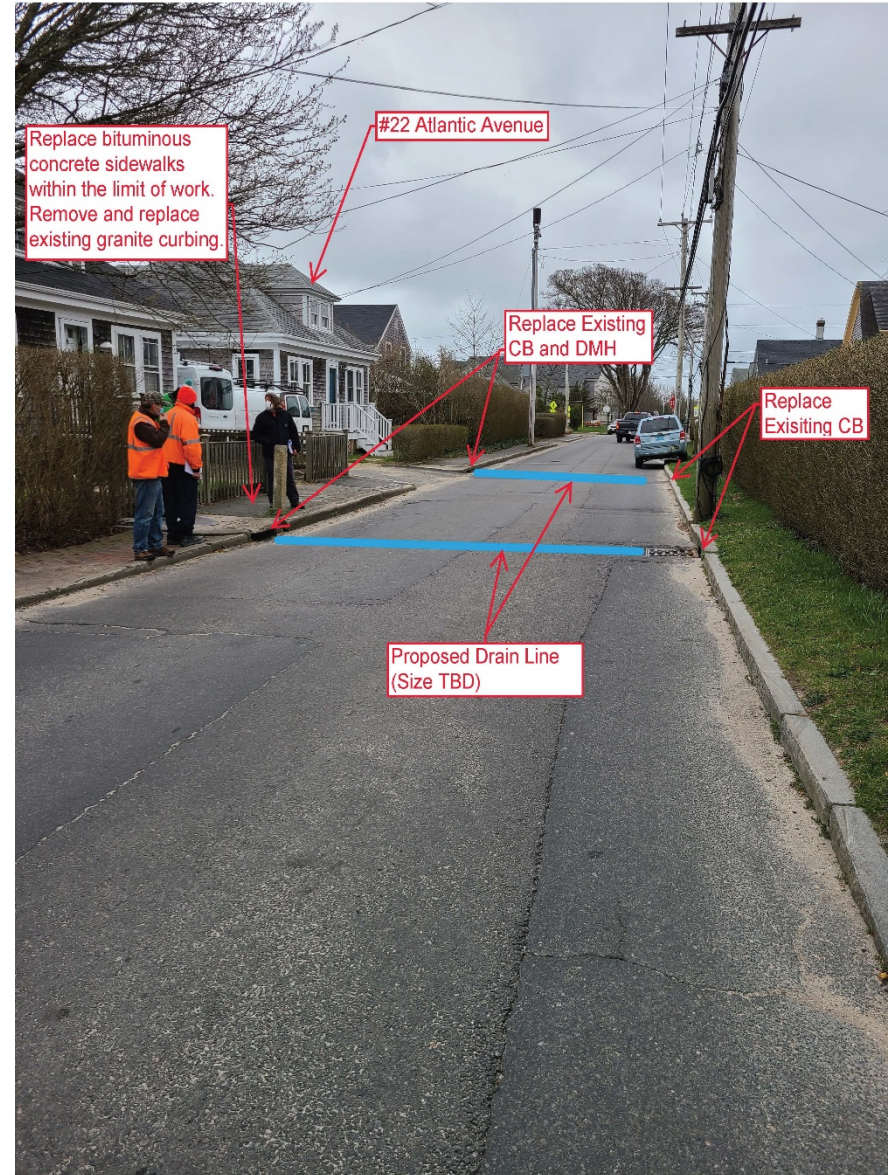


# Atlantic Ave Drainage & Sidewalk Replacement

## Additions -

- **Bituminous concrete:**  
25 square yards
- **Reclaimed granite curb:**  
60 feet
- **Loam restoration:**  
50 square yards
- **Drain pipe:**  
50 feet
- **Drainage structures:**  
6 each

FIGURE 7 - ATLANTIC AVENUE DRAINAGE AND SIDEWALK REPLACEMENT

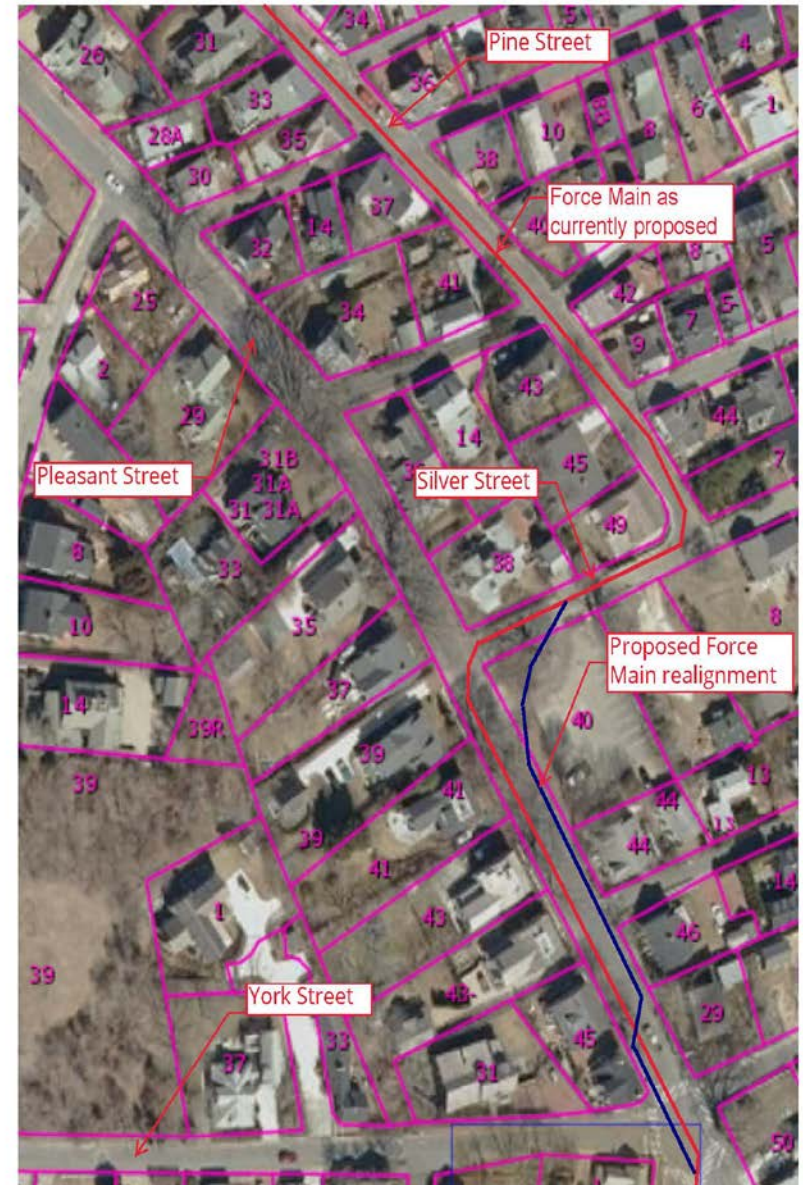


# Pleasant St Force Main Realignment and Parking Lot Restoration

## Additions -

- **Bituminous concrete sidewalk:**  
128 square yards
- **Granite curb R&R:**  
230 feet
- **Loam restoration:**  
51 square yards
- **Reclaimed granite curbing:**  
30 feet
- **Parking lot restoration:**  
1,100 square yards

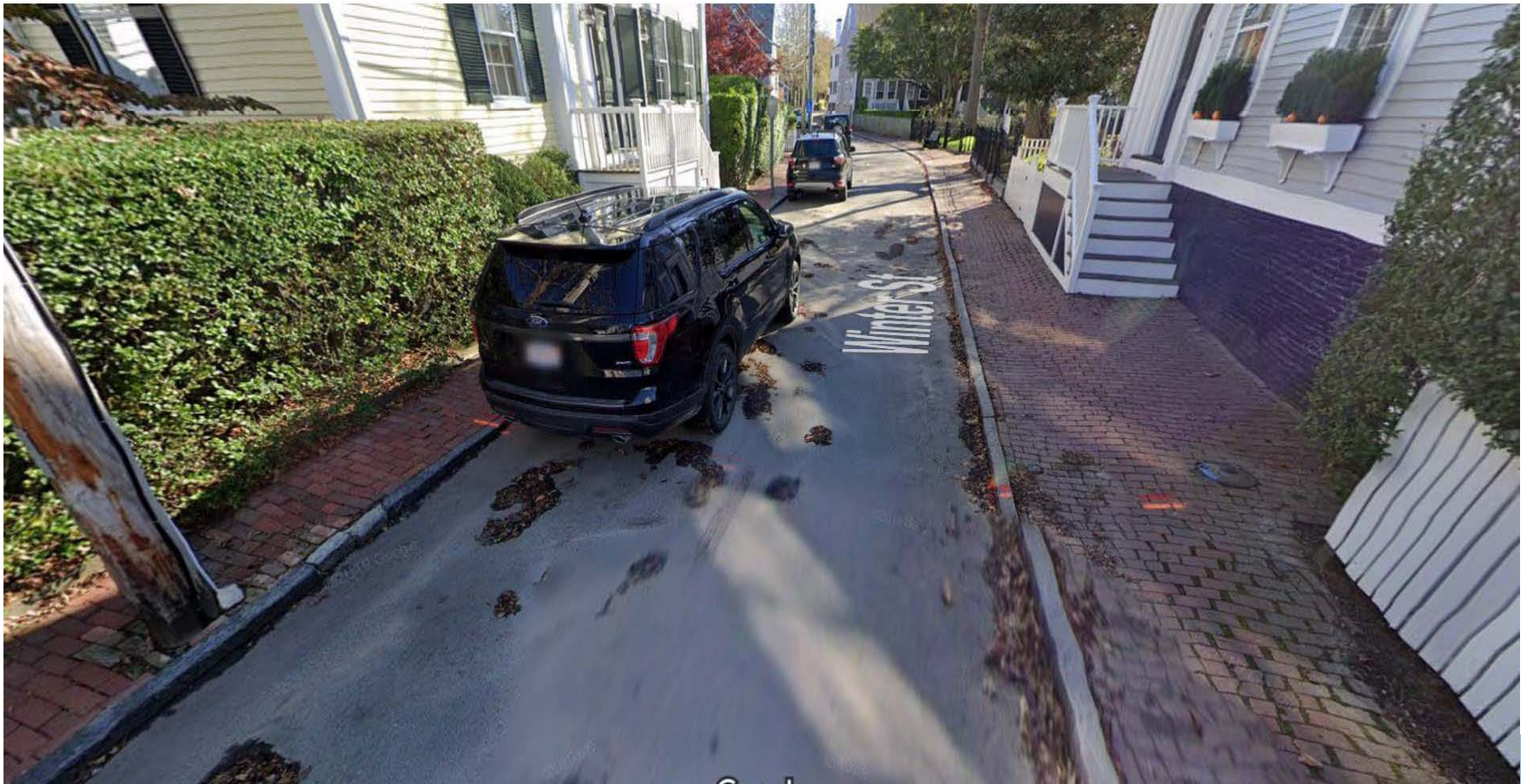
FIGURE 6 - PLEASANT STREET FORCE MAIN REALIGNMENT



# Winter Street Cobblestone Roadway

Additions -

- **Cobblestone to replace bituminous pavement:**  
518 square yards



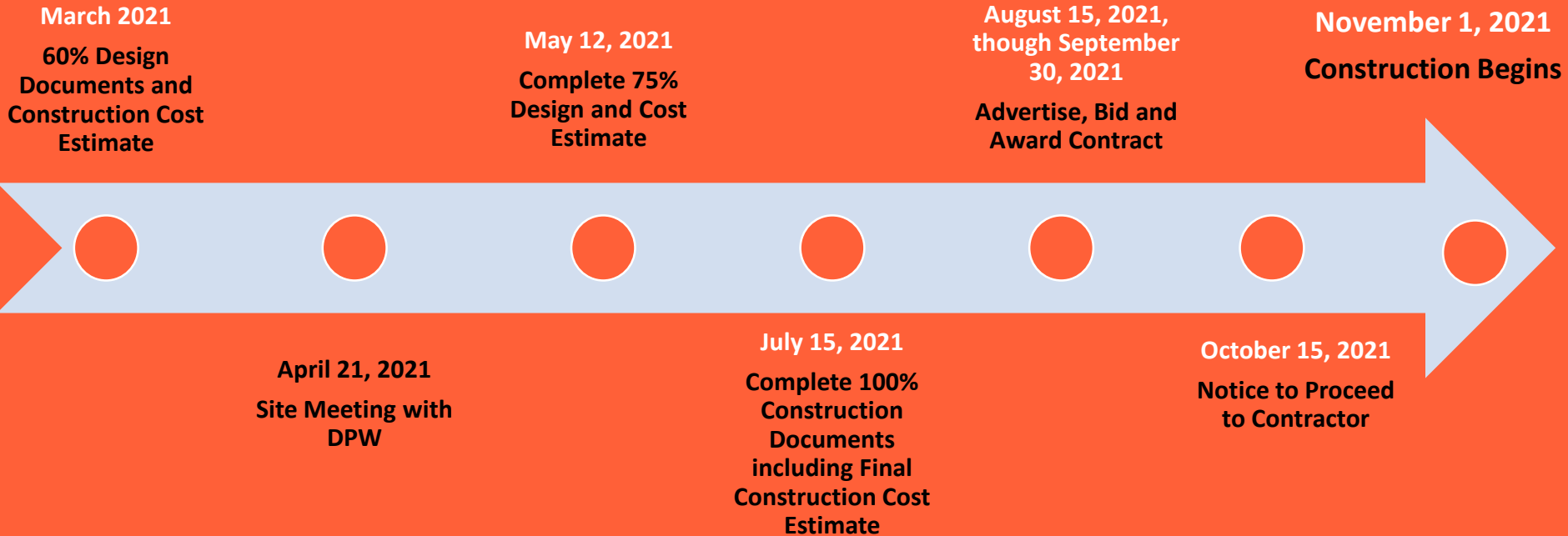
# Contract Bid Alternates Based on Priority

Priority	Description	Estimated Capital Cost	DPW Funding Source
#1	Liberty Street drainage	\$80,000	36425-99369 A18/'19 STORMWATER SYSTEM IMPR. \$80,000
#2	Sea Street, Liberty Street, & Lily Street sidewalks including wheelchair ramps and crosswalks	\$225,000	<u>36422/90415 A10/'20</u> ADA ACCESSIBILITY UPGR. \$50,000 <u>36422-99315 A10/'19</u> PAVING REPAIRS & UPDATES \$175,000
#3	Atlantic Street drainage	\$70,000	<u>36425-99369 A18/'19</u> STORMWATER SYS. IMPR. \$70,000
#4	Pleasant Street/Silver Street parking lot paving	\$120,000	<u>01420-95116 A10/2015</u> PARKING LOT IMPR. \$21,643.79 <u>36422/90417 A10/'20</u> MUN. FAC. PAVING REPAIRS \$98,356.21
#5	Winter Street cobblestone roadway <sup>1</sup>	\$275,000	<u>ORG/OBJ A10/'21</u> COBBLESTONE REPAIRS \$250,000 <u>ORG/OBJ CHAPTER 90</u> COBBLESTONE REPAIRS \$25,000

1. If Winter St. cobblestone (buried in roadway) is not accepted as a bid alternate, Contractor will still be required to remove, stockpile, and transport cobblestone to DPW as part of the base bid. Road will be restored with roadbase and temporary pavement. DPW will install cobblestone under a separate project.



# Future Tasks and Schedule



THANK  
YOU



ENVIRONMENTAL  
 PARTNERS

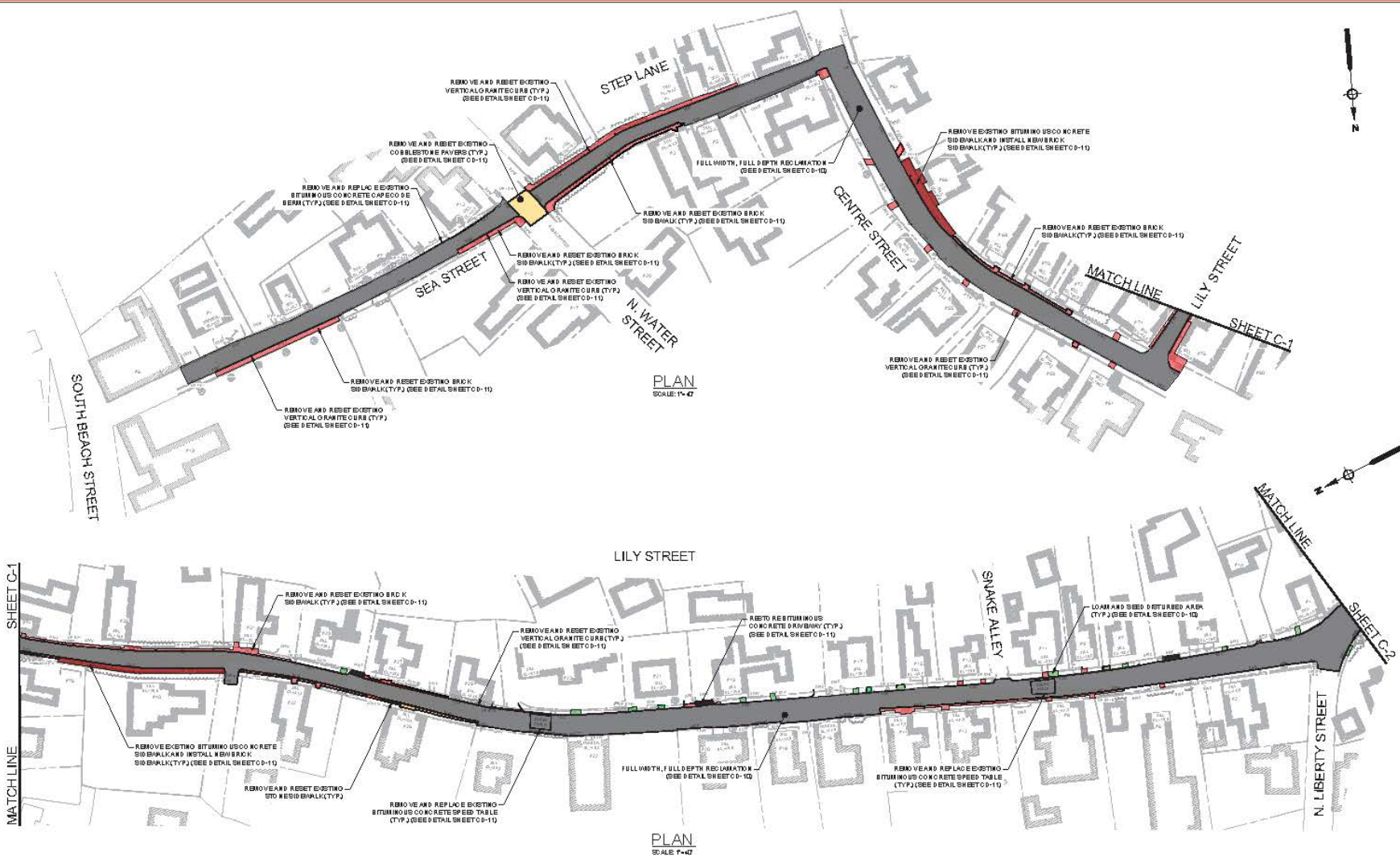
**Hazen**

# Surface Features Impacted Along Force Main Route (Funded by Force Main Project)

LEGEND	
	FULL DEPTH RECLAMATION
	REMOVE AND RESET BRICK SIDEWALK
	REMOVE AND RESET COBBLESTONE
	BRICK SIDEWALK USING LIKE KIND MATERIAL
	LANDSCAPE RESTORATION
	BIKE PATH RESTORATION
	PERMANENT TRENCH PAVEMENT
	BITUMINOUS DRIVEWAY RESTORATION



# Sea St; Step Lane; Center St; Lily St



**ENVIRONMENTAL PARTNERS**

MARK	DATE	DESCRIPTION

Scale	AS NOTED
Date	MAY 2021
Job No.	360 2021
Designed by	FJB
Drawn by	FJB
Checked by	RJR/PCM
Approved by	ZFK

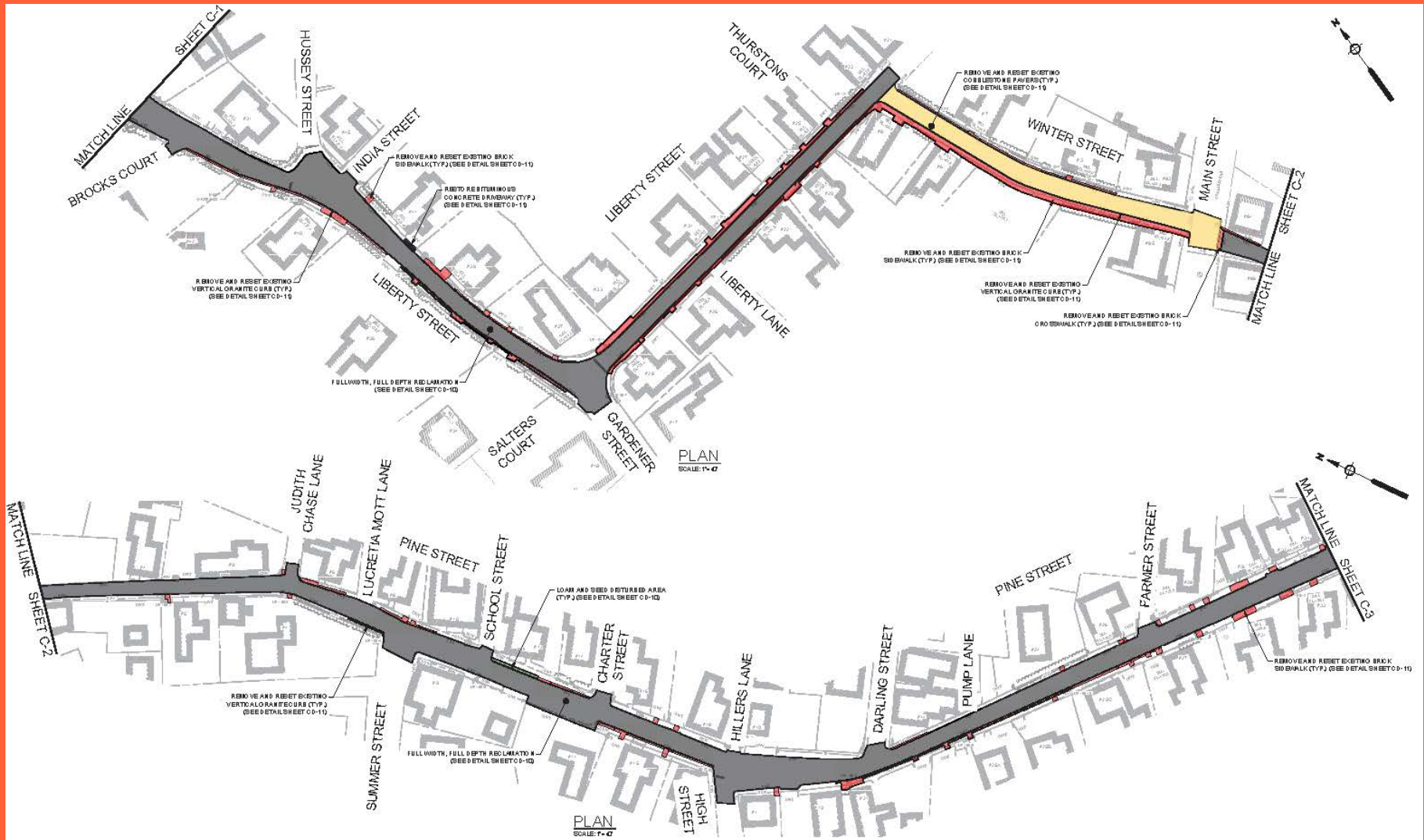
THIS LINE IS ONE INCH  
10 MILLIMETER PLOTTED AT  
FULL SCALE IN A 22 X  
34" DRAWING

SEA STREET PUMP STATION FORCE MAIN NO.3  
TOWN OF NANTUCKET, MA

SEA STREET, STEP LANE, CENTRE STREET, AND LILY STREET  
SURFACE RESTORATION PLAN

75% DESIGN DEVELOPMENT  
Sheet No.  
**C-35**

# Liberty St; Winter St & Pine St



**ENVIRONMENTAL PARTNERS**

MARK	DATE	DESCRIPTION

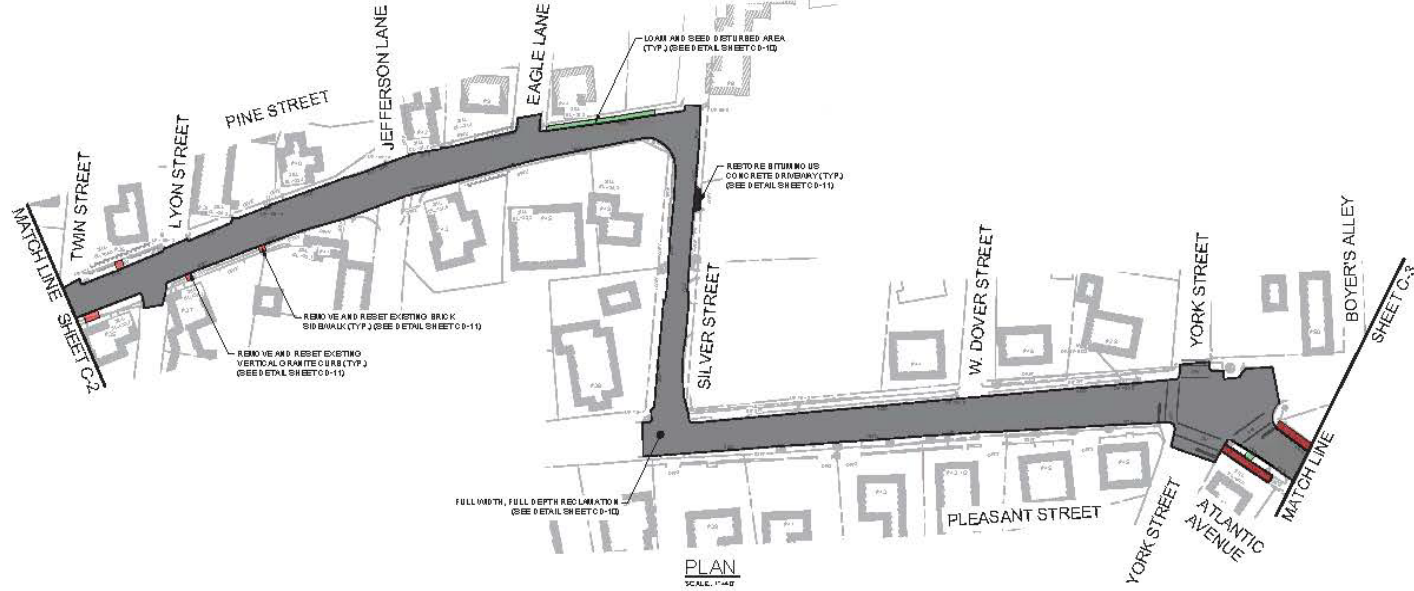
Scale	AS NOTED
Date	MAY 2021
Job No.	3602201
Designed by	TJE
Drawn by	TJE
Checked by	RUN/CM
Approved by	ZJK

SEA STREET PUMP STATION FORCE MAIN NO.3  
TOWN OF NANUCKET, MA

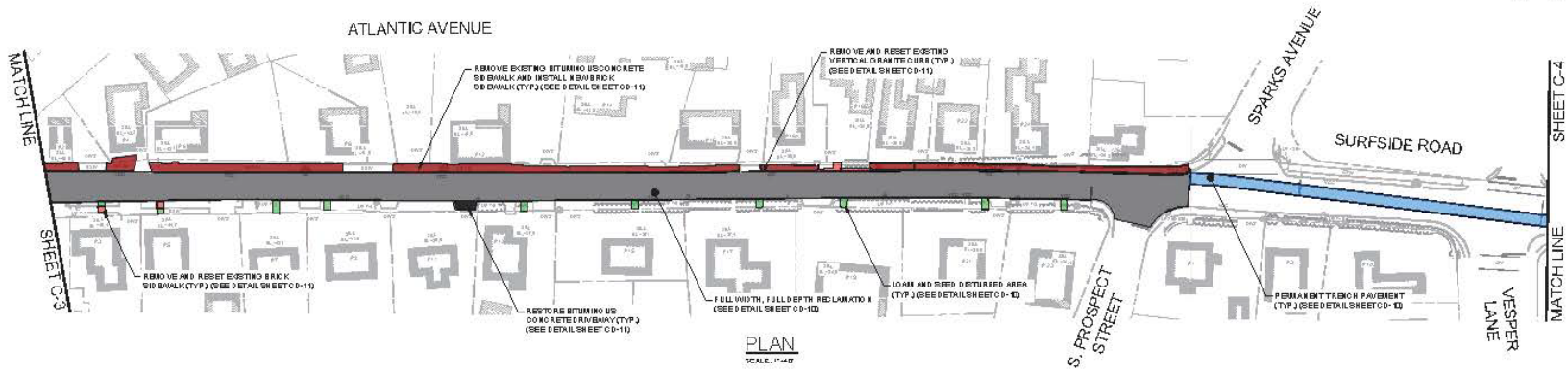
LIBERTY STREET, WINTER STREET, AND PINE STREET  
SURFACE RESTORATION PLAN

75% DESIGN DEVELOPMENT  
Sheet No.  
**C-36**

# Pine St; Silver St; Atlantic Ave; & Surfside Rd



PLAN  
SCALE: 1"=40'



PLAN  
SCALE: 1"=40'



**ENVIRONMENTAL PARTNERS**

MARK	DATE	DESCRIPTION

Scale	AS NOTED
Date	MAY 2021
Job No.	202-0221
Designed by	EJR
Drawn by	EJR
Checked by	RJ/PCM
Approved by	ZFK

THIS LINE IS TO BE USED TO SHOW WHERE PLOTTED AT FULL SCALE ON A 22 X 34" DRAWING

SEA STREET PUMP STATION FORCE MAIN NO.3  
TOWN OF NANTUCKET, MA  
PINE STREET, SILVER STREET, PLEASANT STREET, ATLANTIC AVENUE,  
AND SURFSIDE ROAD SURFACE RESTORATION PLAN

75% DESIGN DEVELOPMENT  
Sheet No. **C-37**

# Surfside Road



**ENVIRONMENTAL PARTNERS**

MARK	DATE	DESCRIPTION

Scale	AS NOTED
Date	MAY 2021
Job No.	360.0001
Designed by	FJB
Drawn by	FJB
Checked by	RJW/PCM
Approved by	ZFK

THIS LINE IS ONE INCH LONG WHEN PLOTTED AT FULL SCALE & A 22" X 34" DRAWING

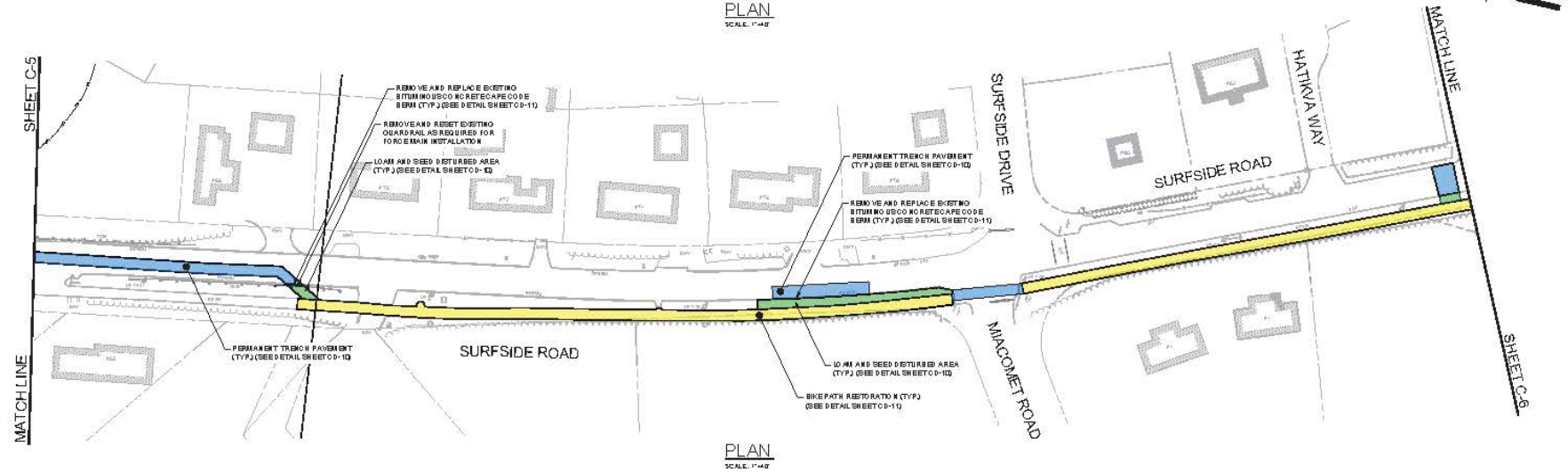
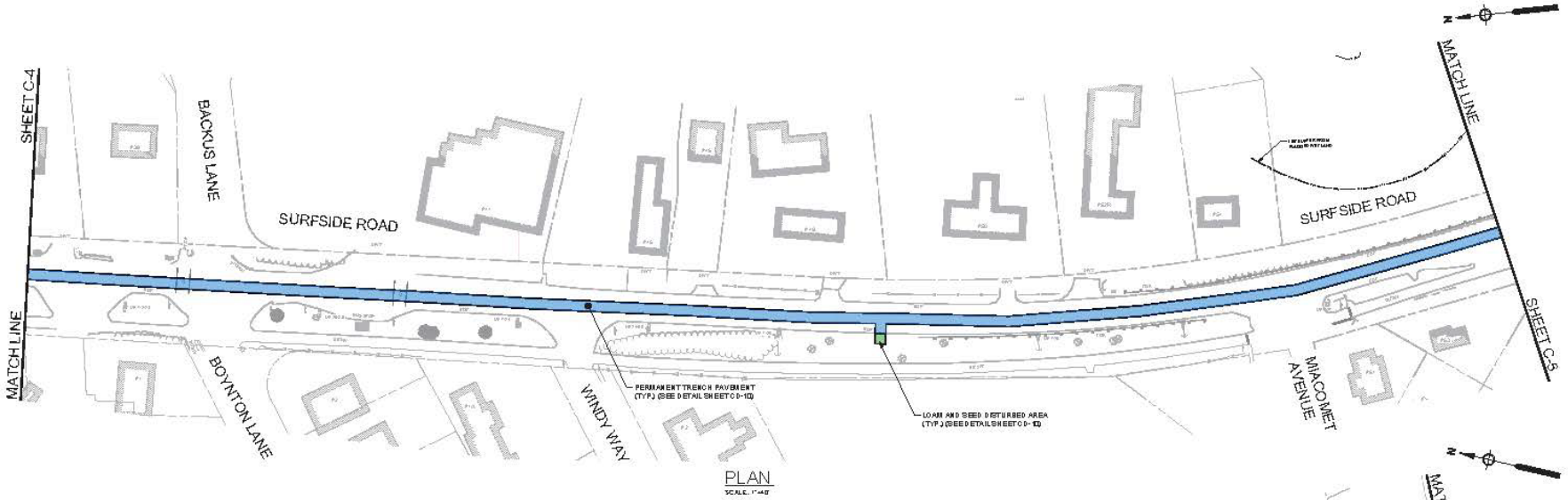
SEA STREET PUMP STATION FORCE MAIN NO.3  
TOWN OF NANTUCKET, MA

SURFSIDE ROAD  
SURFACE RESTORATION PLAN

75% DESIGN DEVELOPMENT  
Sheet No.

**C-38**

# Surfside Road



**ENVIRONMENTAL PARTNERS**

MARK	DATE	DESCRIPTION

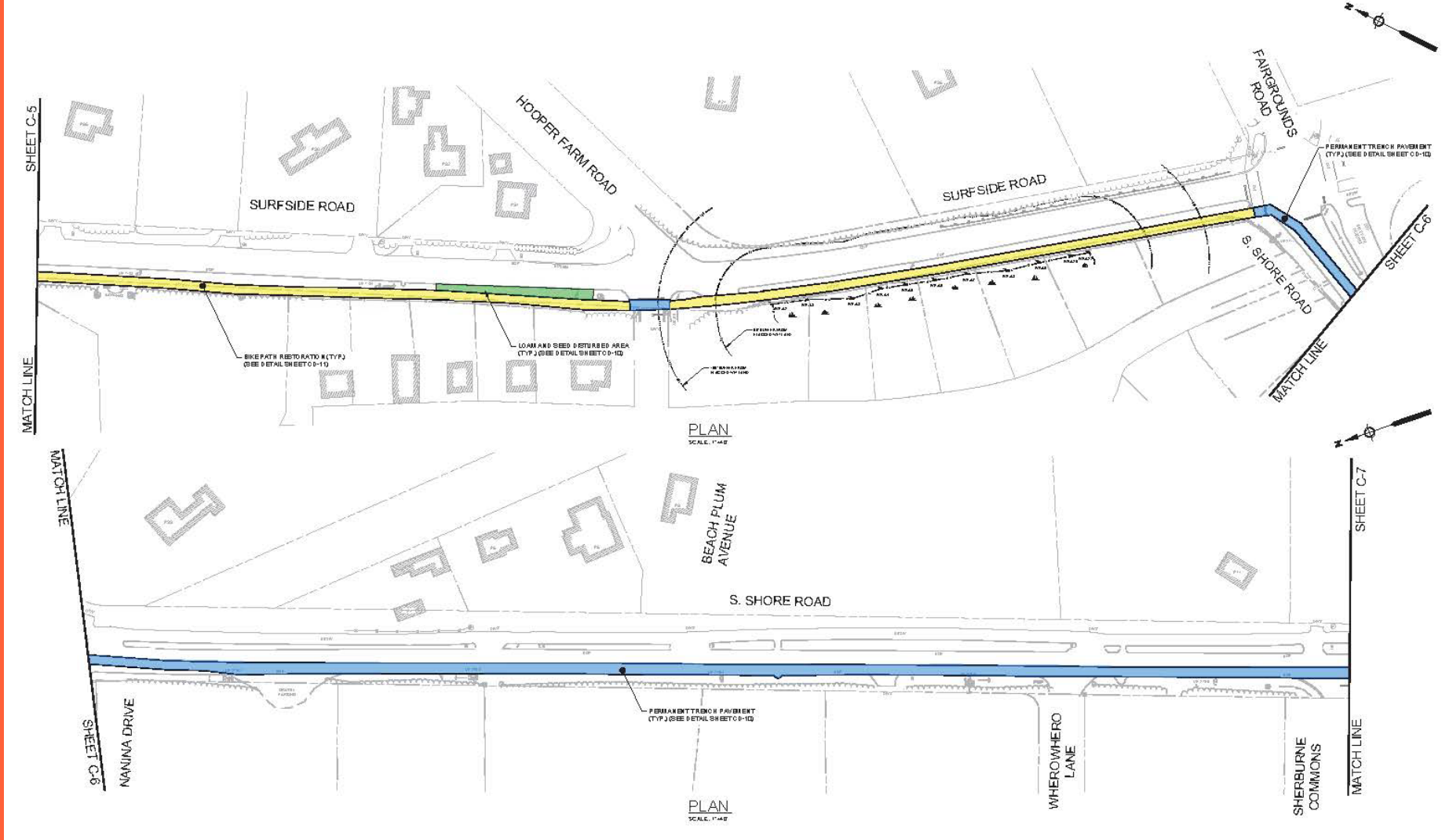
Scale	AS NOTED
Date	MAY 2021
Job No.	363-2021
Designed by	FJB
Drawn by	FJB
Checked by	RJ RICH
Approved by	ZFK

SEA STREET PUMP STATION FORCE MAIN NO. 3  
TOWN OF NANTUCKET, MA

SURFSIDE ROAD  
SURFACE RESTORATION PLAN

75% DESIGN DEVELOPMENT  
Sheet No. **C-39**

# Surfside Rd. & South Shore Rd.



Scale:	AS NOTED
Date:	MAY 2021
Job No.:	2020-001
Designed by:	FJR
Drawn by:	FJR
Checked by:	RJ/PCB
Approved by:	ZJK

THIS LINE PLOTTED AT FULL SCALE ON A 22" X 34" DRAWING

SEA STREET PUMP STATION FORCE MAIN NO.3  
TOWN OF NANTUCKET, MA

SURFSIDE ROAD AND S. SHORE ROAD  
SURFACE RESTORATION PLAN

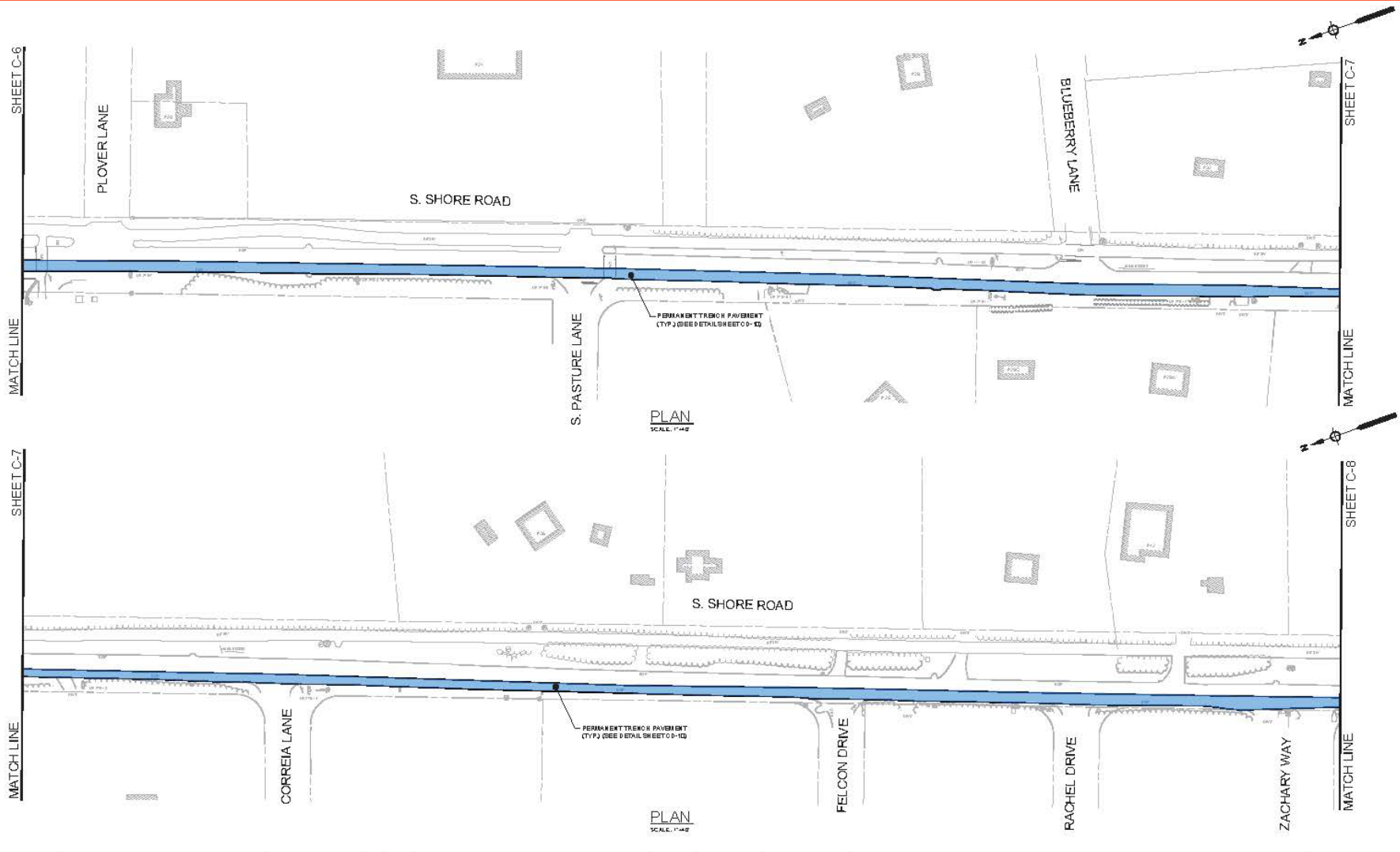
75% DESIGN DEVELOPMENT

Sheet No.

**C-40**

MARK	DATE	DESCRIPTION

# South Shore Road



**ENVIRONMENTAL PARTNERS**

MARK	DATE	DESCRIPTION

Scale	AS NOTED
Date	MAY 2021
Job No.	360-2021
Designed by	FJB
Drawn by	FJB
Checked by	RJANPOM
Approved by	ZFK

THIS LINE IS TO REMEMBER  
 TO WHERE PLOTTED AT  
 FULL SCALE ON A 22" X  
 34" DRAWING

SEA STREET PUMP STATION FORCE MAIN NO.3  
 TOWN OF NAN TUCKET, MA

S. SHORE ROAD  
 SURFACE RESTORATION PLAN

75% DESIGN REVIEW SHEET  
 Sheet No.

**C-41**