

TOWN OF NANTUCKET

TOM NEVERS ROAD MULTI-USE PATH

Bicycle & Pedestrian Advisory Committee

July 20, 2023

3:30-5PM

Virtual Meeting



WELCOME & INTRODUCTIONS: PROJECT TEAM

NANTUCKET PLANNING & ECONOMIC DEVELOPMENT COMMISSION

T. Michael Burns, AICP, Transportation Program Manager

WESTON & SAMPSON

Brandon Kunkel, RLA, Practice Leader

Josh Millonig, RLA, Project Manager

Lindsey Abbott, Project Landscape Architect



AGENDA

Project Background & Purpose

Existing Conditions

The Cycle Experience

Questions & Comments





Project Background & Purpose

PROJECT BACKGROUND & PURPOSE:

WHY ADD A MULTI-USE PATH?

- 1 Expands upon Nantucket's 35-mile multi-use recreational pathway system
- 2 Improves safety and mobility for residents and visitors
- 3 Creates connections to existing recreation assets, including Conservation Foundation properties, Tom Nevers Field, and Pebble Beach.
- 4 Supports Nantucket's transportation policy of accessible, affordable and reliable multi-modal options

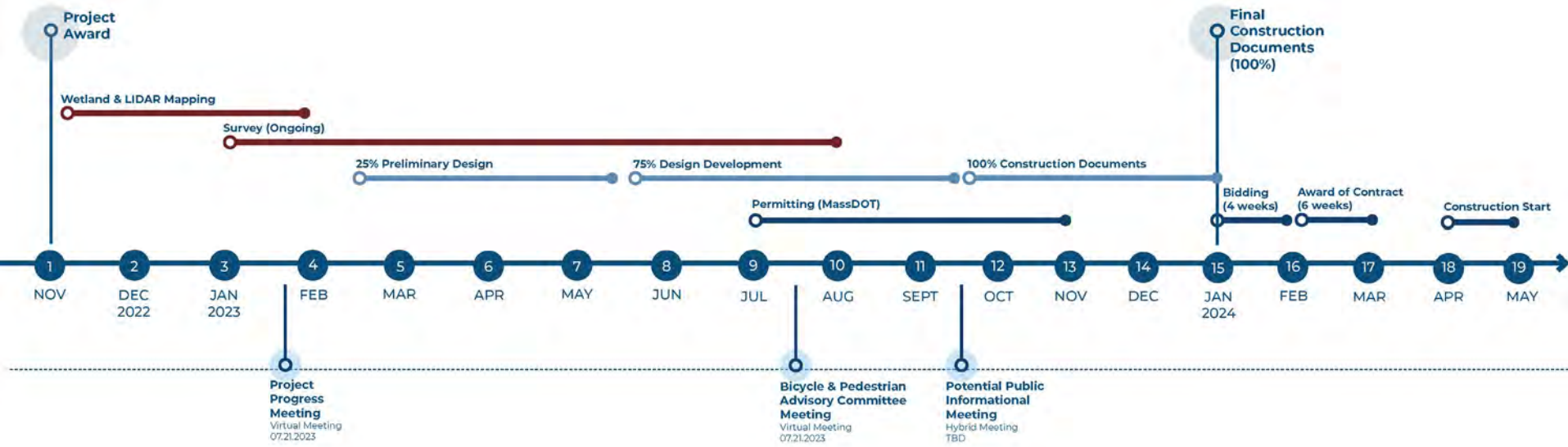


PROJECT BACKGROUND & PURPOSE: ELEMENTS OF THE PROJECT

- Feasibility Study (2020-21)
- Schematic Design & Construction Documentation (2022-23)
- Permitting (Fall 2023)
- Property Acquisitions (**TBD**)
- Project Bidding (Winter 2024)
- Project Construction (Spring – Summer 2024)



PROJECT BACKGROUND & PURPOSE: PROJECT TARGET DATES

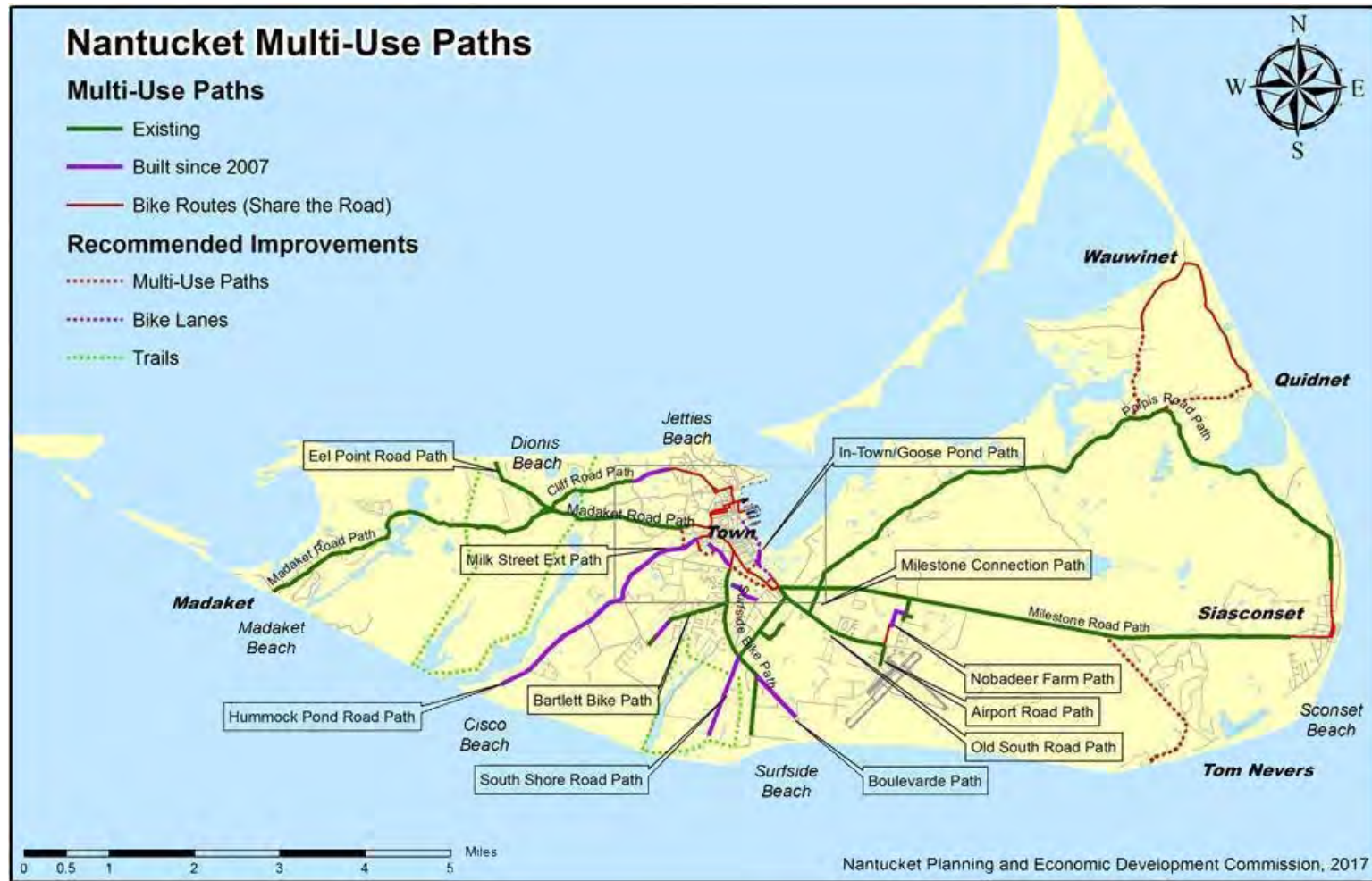


We are here!



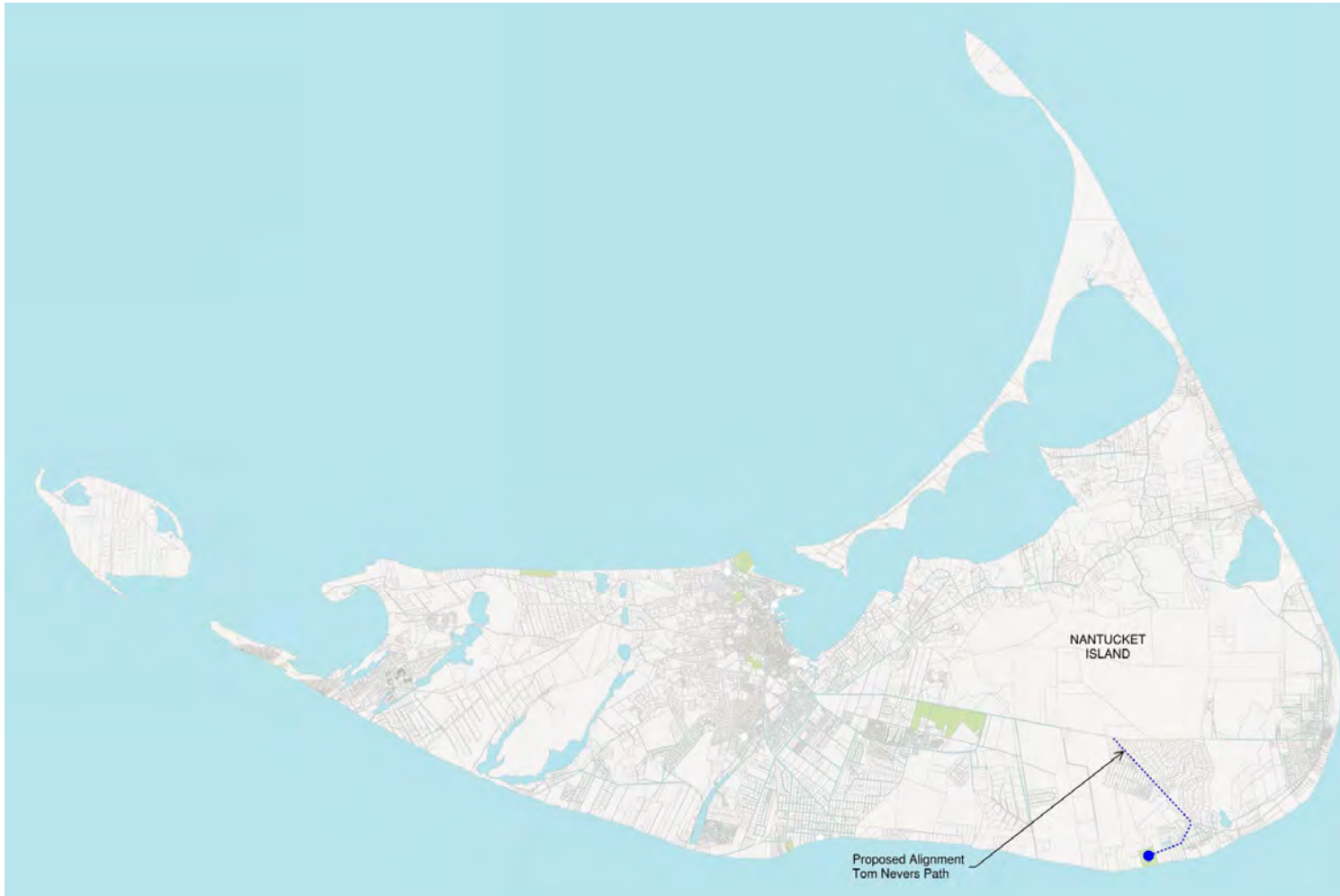
PROJECT BACKGROUND & PURPOSE:

Nantucket Multi-use Paths



PROJECT BACKGROUND & PURPOSE:

Location Map



PROJECT BACKGROUND & PURPOSE:

Connections to Nearby Recreation Assets





Existing Conditions

OPPORTUNITIES



MILESTONE ROAD

Multi-modal Links with Bus Stop
& Milestone Road Path



OPPORTUNITIES

Opportunity for Placemaking at Trailhead through Storytelling, Gateway Elements & Wayfinding Signage



MILESTONE ROAD TRAILHEAD LOCATION

OPPORTUNITIES

Opportunity to provide
interest & diverse path
experiences



LAND BANK PROPERTY

OPPORTUNITIES



UTILITY POLES



ABUTTERS' PROXIMITY

Consider fixed existing elements such as utility poles and abutter proximity

OPPORTUNITIES

Create connections between
Nantucket's recreation assets



PEBBLE BEACH

Image credit: Tom Nevers Beach / Pebble Beach, Nantucket, Massachusetts. https://nantucket.net/nantucket_beaches/tom-nevers-beach/

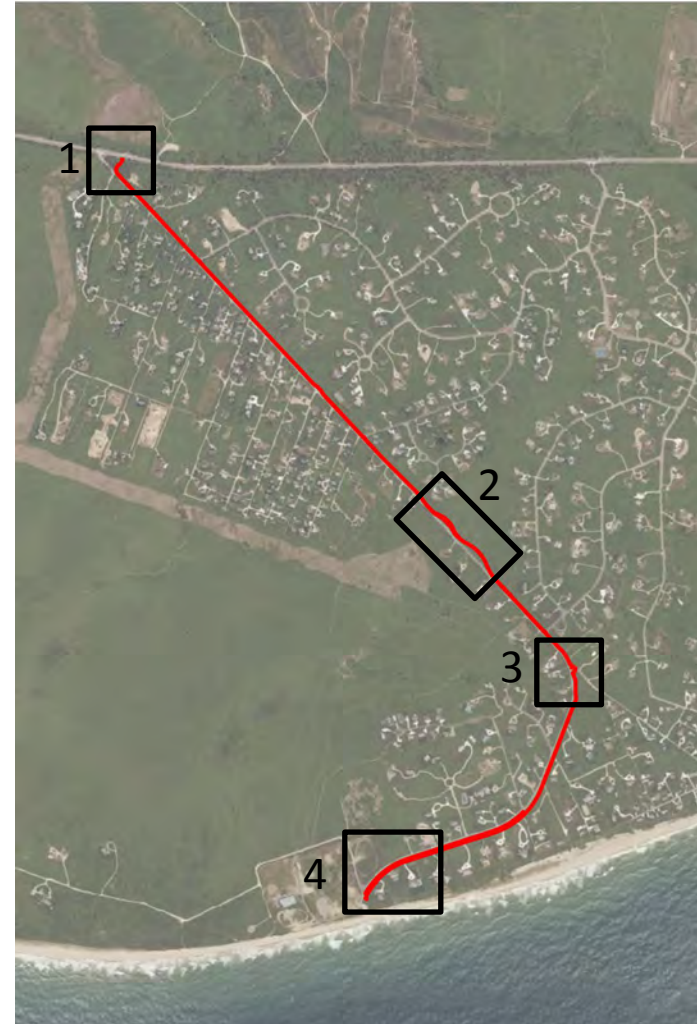
The Cycle Experience



PROJECT BACKGROUND & PURPOSE:

DESIGN INTERVENTIONS ALONG THE MULTI-USE PATH

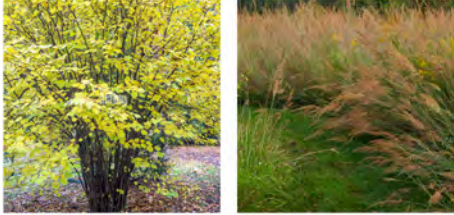
1. Trailhead
2. Boardwalk
3. Intersection with Old Tom Never Road
4. End of Trail



THE CYCLE EXPERIENCE:

Trailhead Option 1

PLANTING PALETTE



MULTI-STEM TREES & NATIVE GRASSES

MATERIALS PALETTE



CORTEN TOTEM TRAIL SIGNAGE & INTERPRETATIVE SIGNAGE



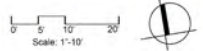
WOOD BEAM BENCHES & BIKE RACKS



STONE DUST SURFACING WITH METAL EDGE



CORTEN BLADES LASER CUT WITH TRADITIONAL WAMPANOAG PATTERNS



THE CYCLE EXPERIENCE: Trailhead Option 2

MATERIALS PALETTE



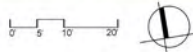
WOOD BEAM BENCHES & BIKE RACKS



NATIVE GRASSES & PERMEABLE
STONE DUST SURFACING WITH
METAL EDGE



CORTEN TOTEM
TRAIL SIGNAGE



THE CYCLE EXPERIENCE: Typical Roadside Experience



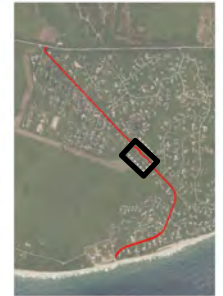
BEFORE



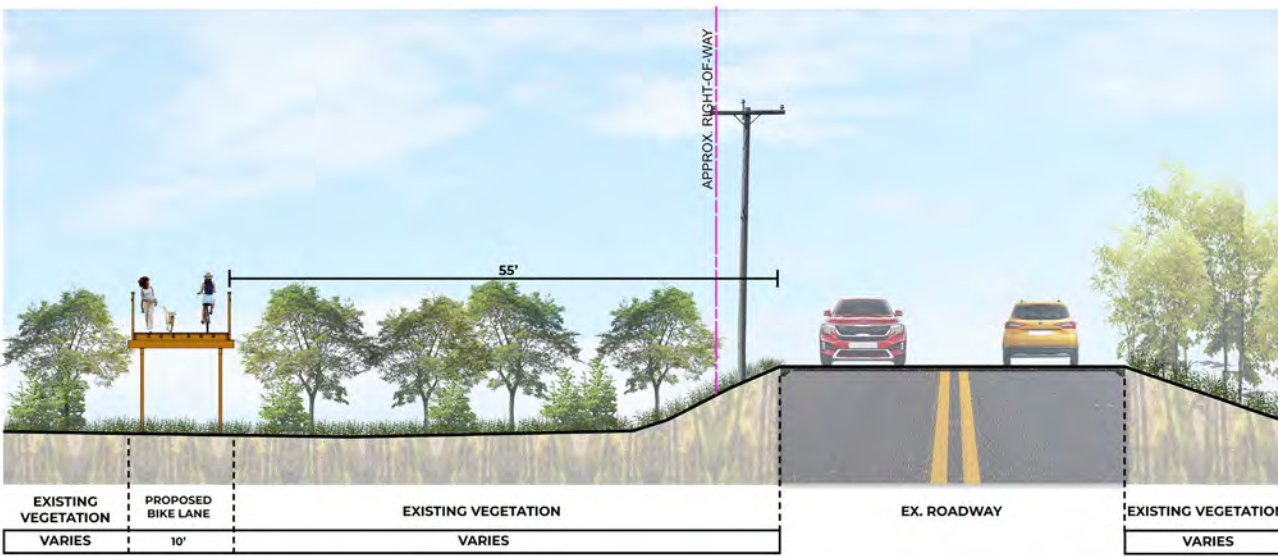
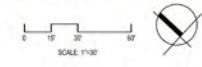
AFTER



THE CYCLE EXPERIENCE: Boardwalk at Land Bank Property



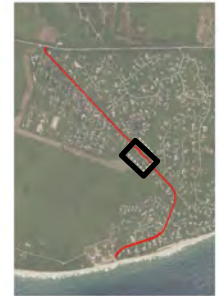
LOCATION MAP



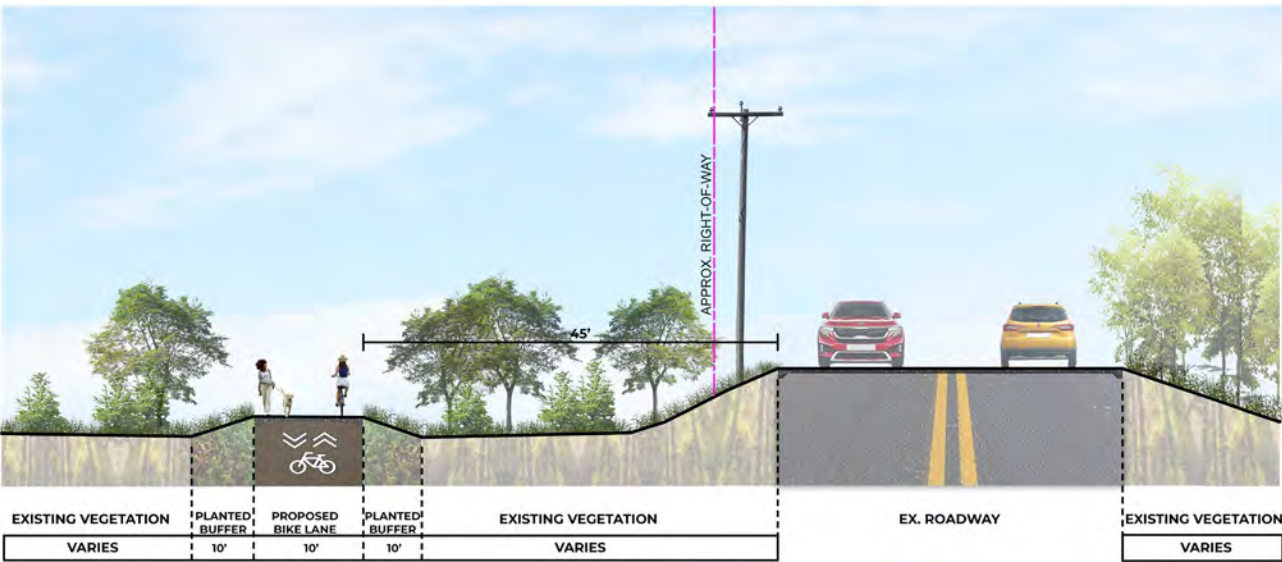
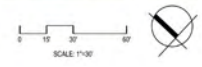
BOARDWALK SYSTEM

THE CYCLE EXPERIENCE:

On-grade Paved Path at Land Bank Property



LOCATION MAP



THE CYCLE EXPERIENCE:

Intersection with Old Tom Nevers Road

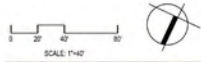


PANORAMA OF INTERSECTION WITH OLD TOM NEVERS ROAD

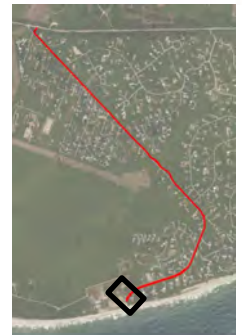


LOCATION MAP

THE CYCLE EXPERIENCE: End of Trail



PANORAMA OF ABUTTER PROPERTY AT END OF TRAIL



LOCATION MAP

QUESTIONS & COMMENTS

Town Contact:

Mike Burns

Ph: (508) 325-7587 ext. 7011

E: Mburns@nantucket-ma.gov

Visit the Town Website:

<https://www.nantucket-ma.gov/985/Sidepaths>

