

# Millage Renewals: What to Know

Two existing parishwide millages are up for renewal on **November 15, 2025**. These are **NOT new taxes or tax increases**—just a renewal of existing funding that supports core services. A rededication is also being proposed to increase drainage investments in Lafayette Parish.



## What's at Stake in 2025?

### 1 Road & Bridge Maintenance Millage

**4.47 mills generates ~\$12.7M/year funds:**

- Roadway Resurfacing & Reconstruction
- Roadway Widening & Capacity Projects
- Bridge replacements
- Grass mowing in public rights of way

**Recent 2024 investments include:**

- Parish-wide Bridge Replacements: \$3.1M
- Road Overlays and Repairs: \$2.7M
- Gloria Switch Rd. Reconstruction: \$615,000

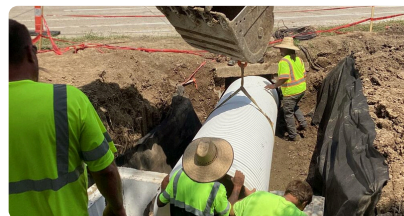
### 2 Public Health & Safety Millage

**3.81 mills generates ~\$10.8M/year funds:**

- Drainage
- Animal Shelter & Mosquito Control
- Rural Fire Protection
- Coroner's Office & Public Health Services

**2024 Highlights Include:**

- 67 Miles of Roadside Ditches Excavated
- \$1M Invested in Coulee Cleaning
- Animal Shelter Maintained "No Kill" Status with 90% Save Rate



**Scan to Learn More**

These millage renewals help maintain services already in place. As the election approaches, learn more about what's on the ballot and how these renewals affect Lafayette Parish.



[lafayettela.gov/millage](https://lafayettela.gov/millage)

# 2025 Millage Renewals: Know the Facts



## Why it Matters

If not renewed, these millages established in 2015 will expire—resulting in the **loss of approximately \$23.5 million annually** in funding that currently supports:

1. Flood prevention and drainage work
2. Fire protection in rural communities
3. Safer roads and bridges
4. Public health programs and mosquito control

## Important Dates

In Person/By Mail Registration Deadline..... 10/15/25  
Geaux Vote Online Registration Deadline... 10/25/25  
Early Voting Begins..... 11/1/25  
Early Voting Ends..... 11/8/25  
Mail-In Votes to Registrar of Voters.....11/14/25  
**Election Day..... 11/15/25**

## How Much Will It Cost You?

*(Based on assessed value with homestead exemption)*

- \$150K home = \$5.18/month
  - \$200K home = \$8.11/month
  - \$250K home = \$12.08/month
- Less than:**
- a streaming subscription
  - a delivery pizza
  - or even a coffee



## What You Will See on the Ballot:

### Road & Bridge Maintenance Millage

*PROPOSITION NO. 1 OF 2 (MILLAGE CONTINUATION) Shall the Parish of Lafayette, State of Louisiana (the "Parish"), continue to levy a special tax of 4.47 mills on all property subject to taxation in the Parish (an estimated \$12,743,000 reasonably expected at this time to be collected from the levy of the tax for an entire year), for a period of 10 years, beginning with the year 2027 and ending with the year 2036, for the purpose of constructing, improving and maintaining roads and bridges in the Parish, said millage to be continued at the rate currently being levied, representing a 0.30 mill increase (due to reappraisal) over the 4.17 mills authorized to be levied through the year 2026 pursuant to an election held on March 28, 2015?*

### Public Health & Safety Millage

*PROPOSITION NO. 2 OF 2 (MILLAGE CONTINUATION AND REDEDICATION) Shall the Parish of Lafayette, State of Louisiana (the "Parish"), continue to levy a special tax of 3.81 mills (the "Tax") on all property subject to taxation in the Parish, for a period of 10 years, beginning with the year 2026 and ending with the year 2035 (an estimated \$10,861,000 reasonably expected at this time to be collected from the levy of the Tax for an entire year), and shall the proceeds of the Tax heretofore or hereafter received be used for the purposes of constructing, acquiring, improving, maintaining, operating, and supporting public facilities and programs in the Parish as follows: (i) 1.24 mills for drainage; (ii) 0.422 mills for providing fire protection and all costs affiliated thereto; (iii) 0.078 mills for roads and bridges; and (iv) 2.07 mills for public health units, mosquito and other arthropod abatement and control, animal control, drainage, and paying mandated expenses of the coroner, said millage to be continued at the rate currently being levied, representing a 0.25 mill increase (due to reappraisal) over the 3.56 mills tax authorized to be levied through the year 2025 pursuant to an election held on March 28, 2015?*

To learn more, visit [lafayettela.gov/millage](http://lafayettela.gov/millage)