

Q10 = 170 cfs
Q100 = 1343 cfs

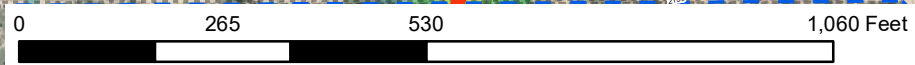
Proposed Basin
for sediment
capture

Proposed Culvert

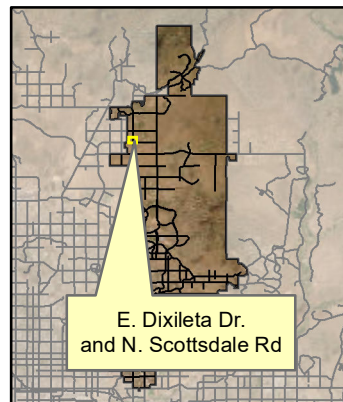
Proposed riprap
channel

Proposed Culvert

Proposed Culvert



DRAFT
NOT FOR CONSTRUCTION



City of Scottsdale
Stormwater Management Master Plan Update
Flood Mitigation AOMI # 13
Alternative 2

- Legend**
- Sediment Capture Basin
 - Culverts
 - Roads
 - Existing Stormdrains/culverts
 - Proposed Detention Basin
 - Known Drainage Issues (KDI)
 - Flow Direction
 - NAOS
 - Easement
 - Parcels
- 100-Year Maximum Flow Depth (Ft)**
- 0.00 - 0.25
 - 0.26 - 0.50
 - 0.51 - 1.00
 - 1.01 - 2.00
 - 2.01 - 3.00
 - 3.01 - 4.00
 - > 4.00