

The City of Scottsdale is developing an ADA Self-Evaluation and Transition Plan to improve accessibility in its facilities, programs, and rights-of-way. The plan will identify barriers, prioritize barrier removal, and outline steps toward a more accessible city. Community input is key to understanding problem areas and making sure the plan reflects residents' needs.

The first community meeting was held on Thursday, May 29, 2025, from 11:00 a.m. to 2:00 p.m. at the Granite Reef Senior Center. The meeting began with a brief presentation outlining the project's objectives, timeline, and opportunities for public involvement. Following the presentation, the event transitioned to an open house format, where attendees engaged with informational and interactive stations and had the opportunity to engage with the project team.

Attendees were encouraged to provide input through comment cards, sticky notes, and one-on-one discussions at the board focused on **Facilities, Programs, and Right-of-Way**. An interactive mapping tool was also available, allowing participants to identify specific locations where they experience barriers or would like to see improvements.

The overarching goals of the meeting were as follows:

- **Educate** community members on the purpose and scope of the ADA Self-Evaluation and Transition Plan.
- **Engage** residents and stakeholders in identifying access challenges across city facilities, programs, and rights-of-way.
- **Gain feedback** on the locations in the city where residents experience the most accessibility challenges.
- **Identify** preliminary priorities based on community member input to help guide future implementation.
- **Encourage** open and inclusive participation by creating a welcoming space for people of all ages and abilities to share their perspectives.

Community Meeting 1

Meeting Attendance

The meeting was promoted through social media and the Speak Up Scottsdale project website to help boost community participation. A total of 20 community members signed in at the event, including six who had registered in advance. At check-in, attendees received a comment card to share specific feedback or ideas. Each board station also included sticky notes and sticky dots, giving residents a way to leave comments and mark their preferences. In total, 25 sticky notes were posted across the various boards.

All comments received are listed verbatim in [Appendix A](#).

Engagement Activities

During the meeting, participants were encouraged to engage with each board. Some boards prompted attendees with specific questions, while others were more open-ended and informational, allowing participants to provide feedback. All comments are listed verbatim in [Appendix A](#).

ID Places

Participants were also encouraged to use ID Places, an interactive digital mapping tool that allowed them to drop pins and leave comments about specific locations in Scottsdale where they've encountered accessibility barriers. Seventeen comments were submitted during the meeting, with the most common concerns including:

- Inaccessible or missing sidewalks and curb ramps, particularly near major intersections.
- Unsafe or unmarked crosswalks in high-traffic areas.
- Specific intersections – such as those in Old Town, Thomas & Scottsdale Rd, and Osborn & Miller – were frequently flagged for pedestrian safety concerns.

A flyer for the Scottsdale ADA Self-Evaluation and Transition Plan Community Meeting. The flyer features the logos for Accessible Scottsdale and the City of Scottsdale. The main text reads: "Join Us! Scottsdale ADA Self-Evaluation and Transition Plan Community Meeting". Below this, it says "Learn about the Scottsdale ADA Self-Evaluation and Transition Plan and share your thoughts!". The date and time are "11 a.m. – 2 p.m. Thursday, May 29". The location is "Granite Reef Senior Center, Room 2, 1700 N Granite Reef Rd, Scottsdale, AZ 85257". A blue banner at the bottom contains the text: "Don't miss this opportunity to help shape the city! Your input is crucial for developing this important plan to ensure the City of Scottsdale is inclusive for both residents and visitors." The background of the flyer shows a modern building with a brick facade and large windows.

Accessible Scottsdale **CITY OF SCOTTSDALE**

Join Us!

Scottsdale ADA Self-Evaluation and Transition Plan

Community Meeting

Learn about the Scottsdale ADA Self-Evaluation and Transition Plan and share your thoughts!

11 a.m. – 2 p.m. Thursday, May 29

Presentation will begin promptly at 11:15 a.m.

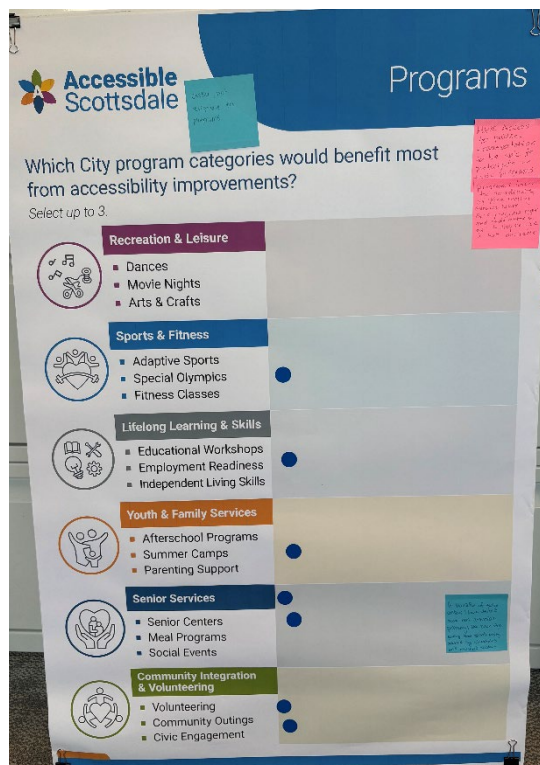
Granite Reef Senior Center, Room 2
1700 N Granite Reef Rd, Scottsdale, AZ 85257

Don't miss this opportunity to help shape the city!
Your input is crucial for developing this important plan to ensure the City of Scottsdale is inclusive for both residents and visitors.



Facilities

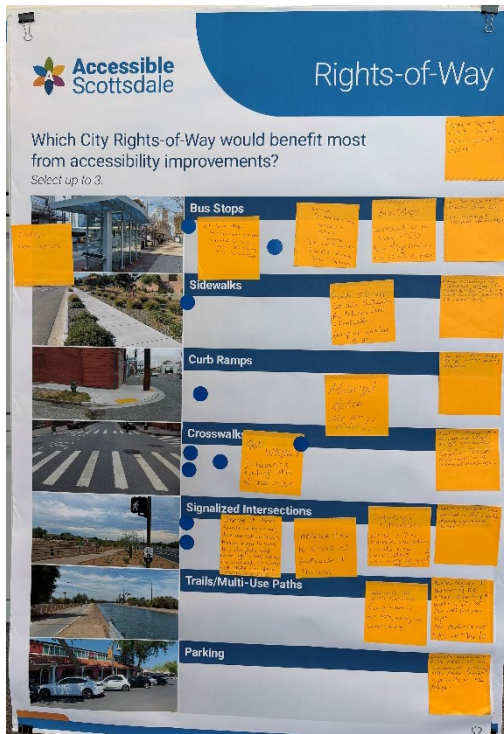
This board was used to gather community input on which city facilities residents use most, allowing participants to select up to three facility types from the listed categories. The findings indicate that community members generally showed the most interest in Neighborhood & Community Parks, Community & Cultural Centers, and City Services & Operations, as these categories received the highest number of votes. There was also notable engagement with Special Use Facilities.



Programs

This board was designed to identify which City of Scottsdale program categories community members believe would benefit most from accessibility improvements. The findings show that community members were generally most interested in enhancing accessibility for Senior Services, Community Integration & Volunteering, and Sports & Fitness programs, as these categories received the most votes. The written comments shared the importance of accessible transportation to reach programs and the need for better information about available services, indicating that both physical and informational accessibility are key priorities for residents.

Community Meeting 1



Rights-of-Way

This board sought to gather community input on which types of rights-of-way would benefit most from accessibility improvements. The findings indicate that community members were generally most interested in improving accessibility at crosswalks, signalized intersections, and bus stops, as these categories received the most votes and comments. Suggestions included enhancing crosswalk visibility, increasing crossing times at intersections, improving bus stop information, and issues with bikes and scooters on sidewalks and trails.

Next Steps

The next phase of the project will focus on transforming public feedback into action during the assessment portion of the project. The project team will start by carefully reviewing and organizing all comments from attendees, sticky notes, and digital tools such as ID Places, with special attention to the most common concerns like missing or inaccessible sidewalks, unsafe crosswalks, transit stop amenities, and challenges with autonomous vehicles at pedestrian crossings. Field assessments at high-priority locations will help verify accessibility barriers and guide potential solutions.



Appendix A

All comments are listed verbatim.

Comment Cards

- Bring back the downtown trolley.
- Landscape triangle at East Side Scottsdale Rd, between Drinkwater and Eaarl (S. of Osborn). Needs sidewalk or ability to cross to Westside of Scottsdale Rd.
- Bus Stop maintenance, shade, seating, loitering.
- Are you reaching out to residents who work and need to hear this after 5pm?
- Scottsdale brought in a leader in pedestrian etc. safety and we interacted with him to gain an understanding of our city's infrastructure. Have you talked with him? (Sorry not to recall his name, but Transportation brought him in)
- Are there various departments talking to each other?
- Please get Waymo to recognize the flashing lights at crosswalks. I use the crosswalks at my Miller and Osborn round-about daily and I have never seen a Waymo stop at the crosswalk for me. They don't seem to recognize the flashing lights. Dangerous! Thanks, Carla.
- 70th and Vernon – Sidewalk challenge
- You have to walk in street, issues with cars.
- Would like to see more programs offered at other senior center beside Granite Reef.
- Challenges with Trolley System and the locations it goes.
- Very much appreciate the cab system.
- Would like to see improvements at bus stops (dirty, not accessible)
- Would like to see improvements on Scottsdale and Thomas intersection.
- No Turn-on-red in highly populated pedestrian areas, such as Old Town.
- Turn-on-red in high pedestrian areas increases risk to pedestrians.

Facilities

- Community & Cultural Centers
 - More free activities at senior centers.
- Special Use Facilities

- Trolley service to Westworld during special events (Fare Payment OR)

Programs

- General
 - Costly, not eligible for programs
 - Have access to public transportation to be able to participate in these programs.
 - Programs hours to coordinate with “Free Trolley” service hours. Ex: a program begins and ends after 6, but trolley service is not available.
- Senior Services
 - A handful of senior centers I have visited have non-accessible pathways like brick-style paving that isn’t easily accessed by wheelchairs and motorized scooters.

Rights-of-Way

- General
 - Reduce speed limit where bike paths exist.
- Bus Stops
 - At bus stops homeless people making mess or sleeping on benches.
 - Shading & water stations
 - Some connecting buses time should be looked so people don’t miss buses.
 - Bus tops currently no way to ID bus stop number and route number.
 - All bus stops to have shelter from sun.
 - No overnight sleeping at bus stops.
- Sidewalks
 - Provide sidewalk Eastside Scottsdale Rd between Earrl & Drinkwater (No option on where to go)
 - Street → landscape → sidewalk; always to reduce risk of moving cars in close proximity to pedestrians.
- Curb Ramps
 - Motorized bikes are an issue!!
 - Do not have curb ramps enter moving traffic.

- Signalized Intersections

- Signage at intersections (including arrows) directing vehicles drivers turning right to come to a complete stop (when light is red) behind the crosswalk. Or better yet: More no right on red intersections.
- Increase time to cross at Scottsdale & Thomas.
- Signalized intersection what is the maintenance protocol to make sure annunciators work and how do you get new ones installed.
- Cars: No right turn on red within highly densely populated areas.

- Trails/Multi-Use Paths

- Some multi-use paths transition from pavement to dirt pretty quickly and without warning
- Better signage and marketing rei bikers signaling to walkers, i.e., “on your left; on your right”
No motorized bikes on trails.

- Parking

- Include accessible bike racks in all commercial parking lots. Make racks a priority in all design.