

1565-1589 RUPERT STREET RESIDENTIAL DEVELOPMENT

NORTH WEST VIEW



Proposed Residential Development at 1565 – 1589 Rupert Street.

Proposed project is a 6 - storey wood frame rental building located at the south side of Rupert Street.

A 33' wide Green way including walkways, landscaping and seating areas will be located to the west of the project and the project is required to dedicated 5m along the west property line.

The project is comprised of 95 diverse rental units including 20% affordable rental units.

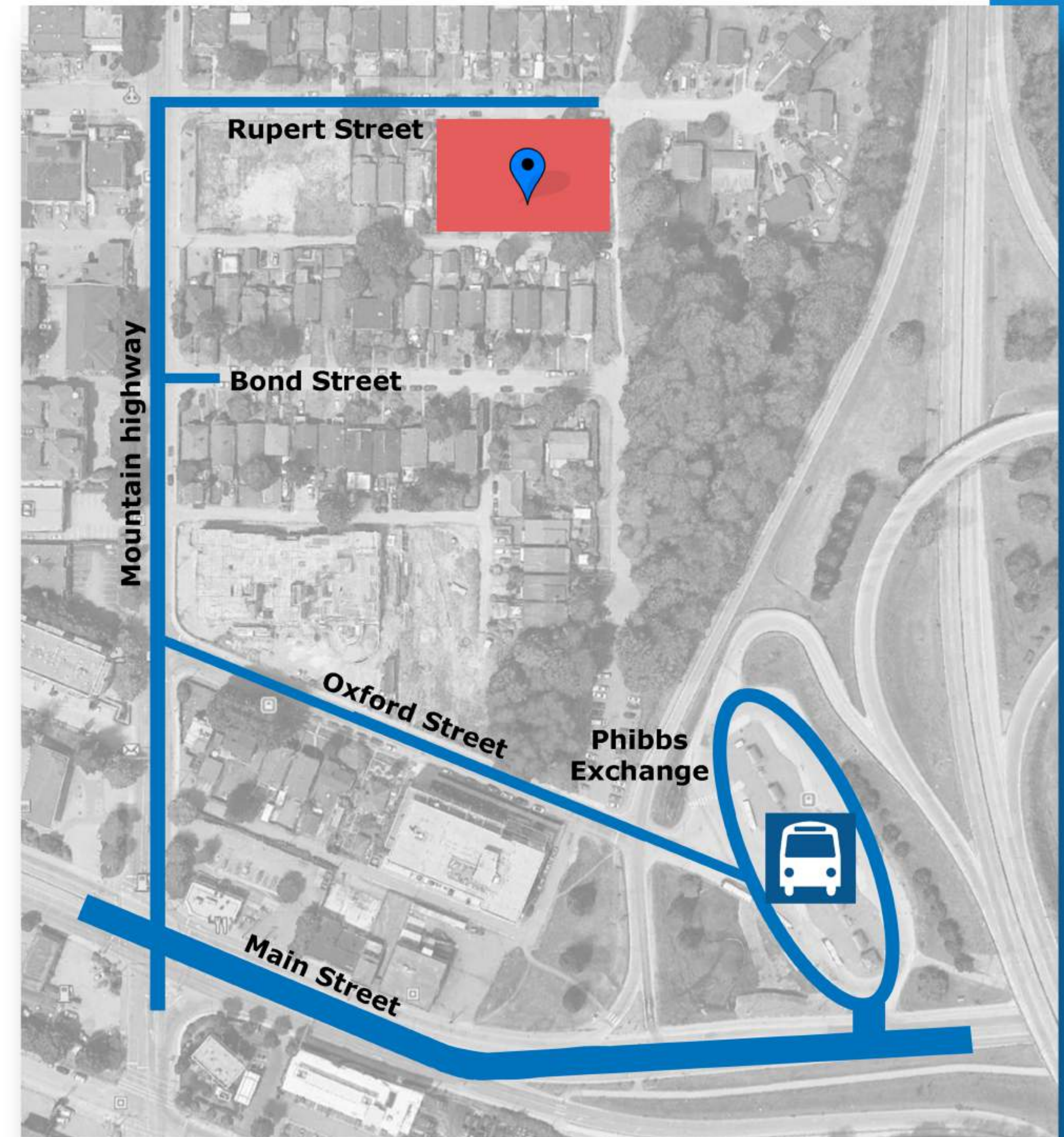
Unit types are including 20 Studios, 42 one bedroom, 30 two bedrooms and 3 three bedrooms.

The vehicular access to parkade is off the Rupert Street.

Proposed project provides 83 parking stalls as per the Alternate Vehicular Parking Rate of the District of North Vancouver.

Proposed parking stalls are including 10 visitor and 6 accessible parking stalls. One carwash stall is also provided in parkade.

160 secured bicycle parking and a bicycle maintenance room is provided in the parkade



1565-1589 RUPERT STREET RESIDENTIAL DEVELOPMENT

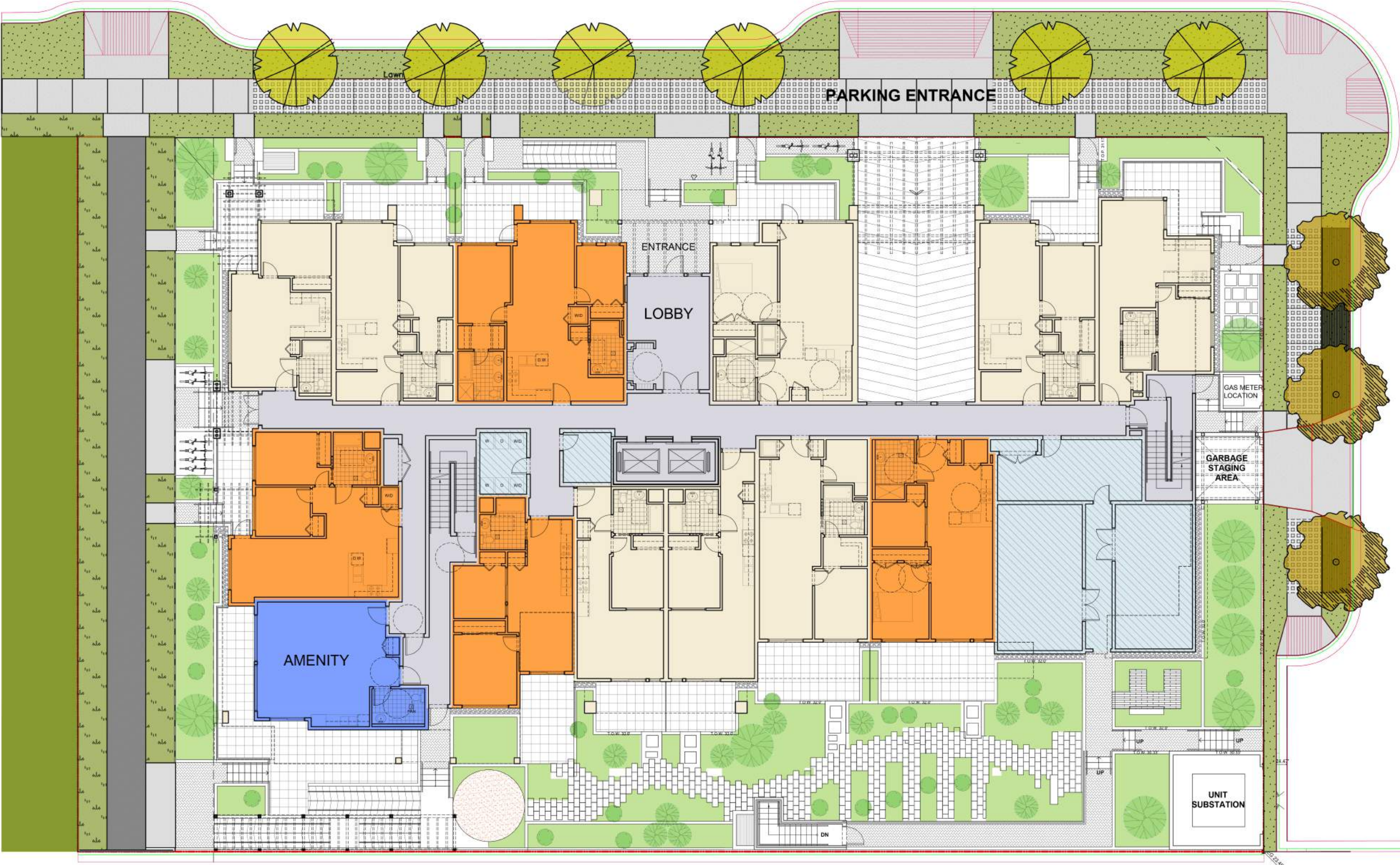


1565-1589 RUPERT STREET RESIDENTIAL DEVELOPMENT

SITE PLAN



GREEN SPINE



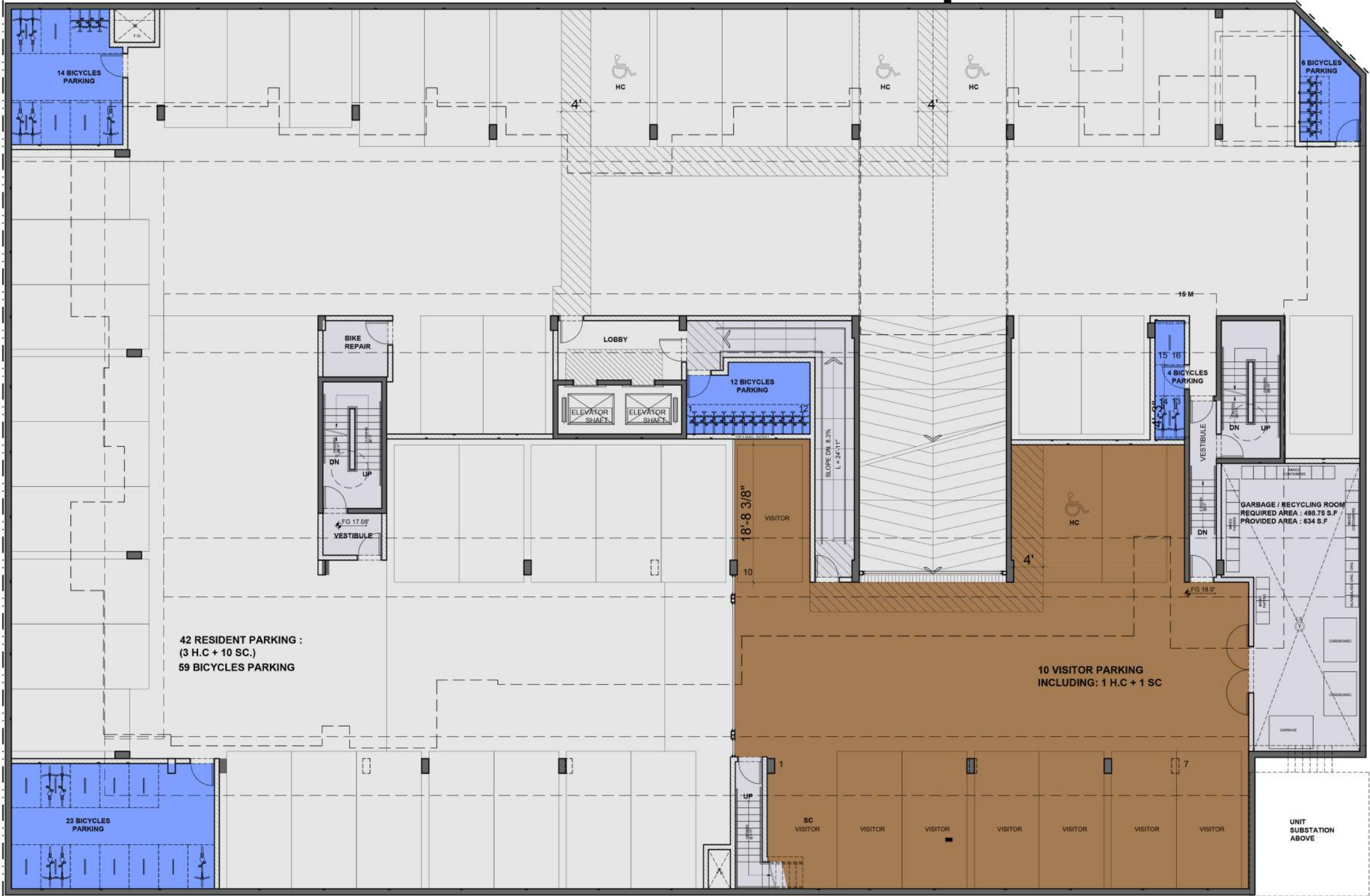
ORWELL STREET

- ENTRY LOBBY AND CORRIDOR
- STUDIOS
- 1- BEDROOM UNITS
- 2- BEDROOM UNITS
- 3- BEDROOM UNITS
- AMENITY SPACE
- SERVICE ROOM

LANE

1565-1589 RUPERT STREET RESIDENTIAL DEVELOPMENT

P1 PARKING PLAN



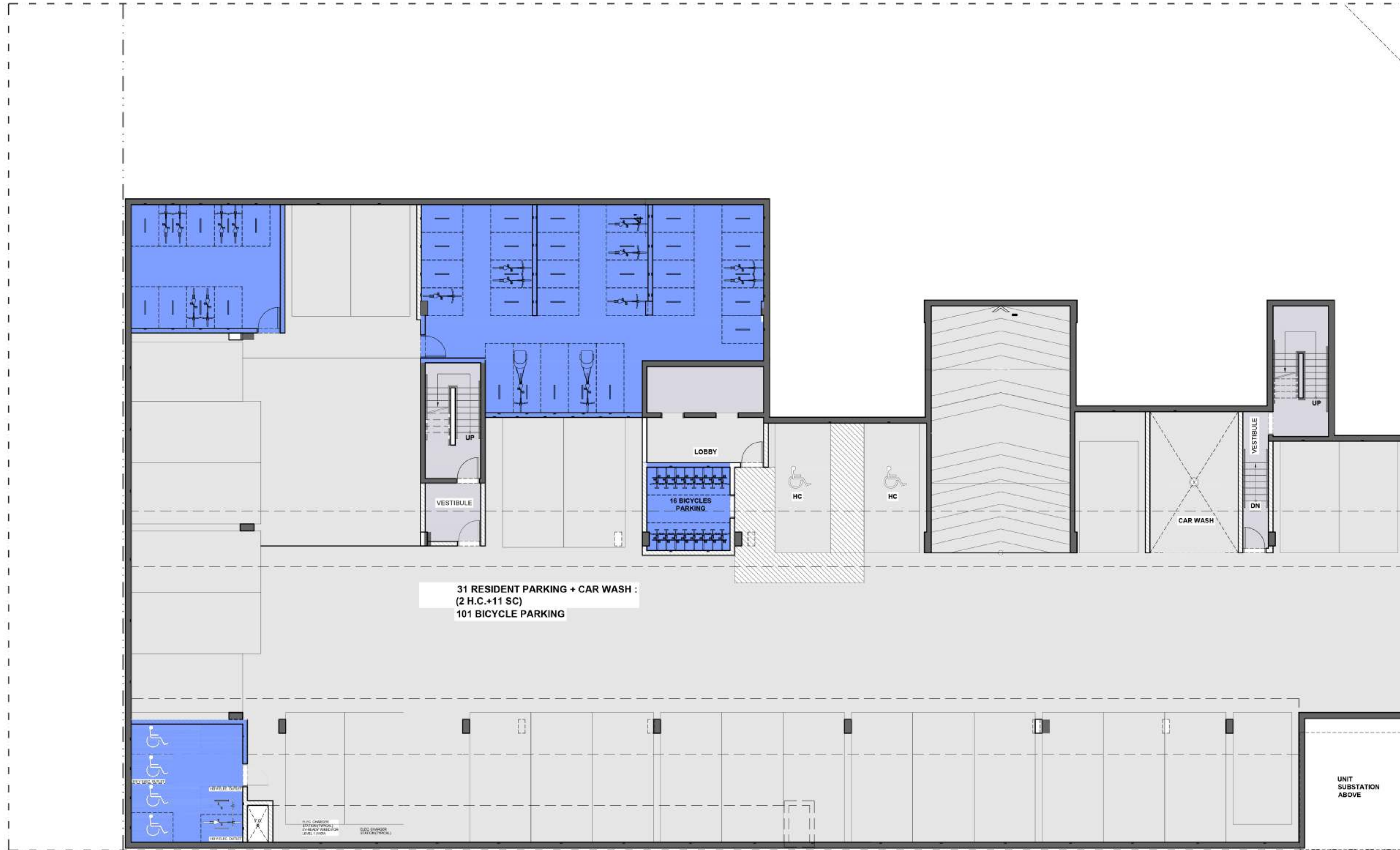
LANE

20% OF PARKING STALLS ARE EV-READY, WIRED FOR LEVEL 1 CHARGING
 CONDUIT IS IN PLACE SO THAT 100% OF PARKING STALLS CAN LATER BE WIRED FOR LEVEL 1 CHARGING
 ALL SECURED BICYCLE STORAGES ARE INCLUDING LEVEL 1 ELECTRICAL OUTLETS (110V) FOR ELECTRIC BICYCLE CHARGING

COMMON AREA
 BICYCLE PARKING
 VISITOR PARKING

1565-1589 RUPERT STREET RESIDENTIAL DEVELOPMENT

P2 PARKING PLAN



LANE

20% OF PARKING STALLS ARE EV-READY, WIRED FOR LEVEL 1 CHARGING
 CONDUIT IS IN PLACE SO THAT 100% OF PARKING STALLS CAN LATER BE WIRED FOR LEVEL 1 CHARGING
 ALL SECURED BICYCLE STORAGES ARE INCLUDING LEVEL 1 ELECTRICAL OUTLETS (110V) FOR ELECTRIC BICYCLE CHARGING

- COMMON AREA
- BICYCLE PARKING
- VISITOR PARKING

1565-1589 RUPERT STREET RESIDENTIAL DEVELOPMENT

FIRST FLOOR PLAN



PARKING ENTRANCE

GREEN SPINE

ORWELL STREET



- ENTRY LOBBY AND CORRIDOR
- STUDIOS
- 1- BEDROOM UNITS
- 2- BEDROOM UNITS
- 3- BEDROOM UNITS
- AMENITY SPACE
- SERVICE ROOM
- LANE**

1565-1589 RUPERT STREET RESIDENTIAL DEVELOPMENT

SECOND FLOOR PLAN



GREEN SPINE

ORWELL STREET



- ENTRY LOBBY AND CORRIDOR
 - STUDIOS
 - 1- BEDROOM UNITS
 - 2- BEDROOM UNITS
 - 3- BEDROOM UNITS
 - AMENITY SPACE
 - SERVICE ROOM
- LANE

1565-1589 RUPERT STREET RESIDENTIAL DEVELOPMENT

TYPICAL FLOOR PLAN



GREEN SPINE

ORWELL STREET

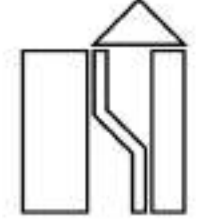


- ENTRY LOBBY AND CORRIDOR
- STUDIOS
- 1- BEDROOM UNITS
- 2- BEDROOM UNITS
- 3- BEDROOM UNITS
- AMENITY SPACE
- SERVICE ROOM

LANE

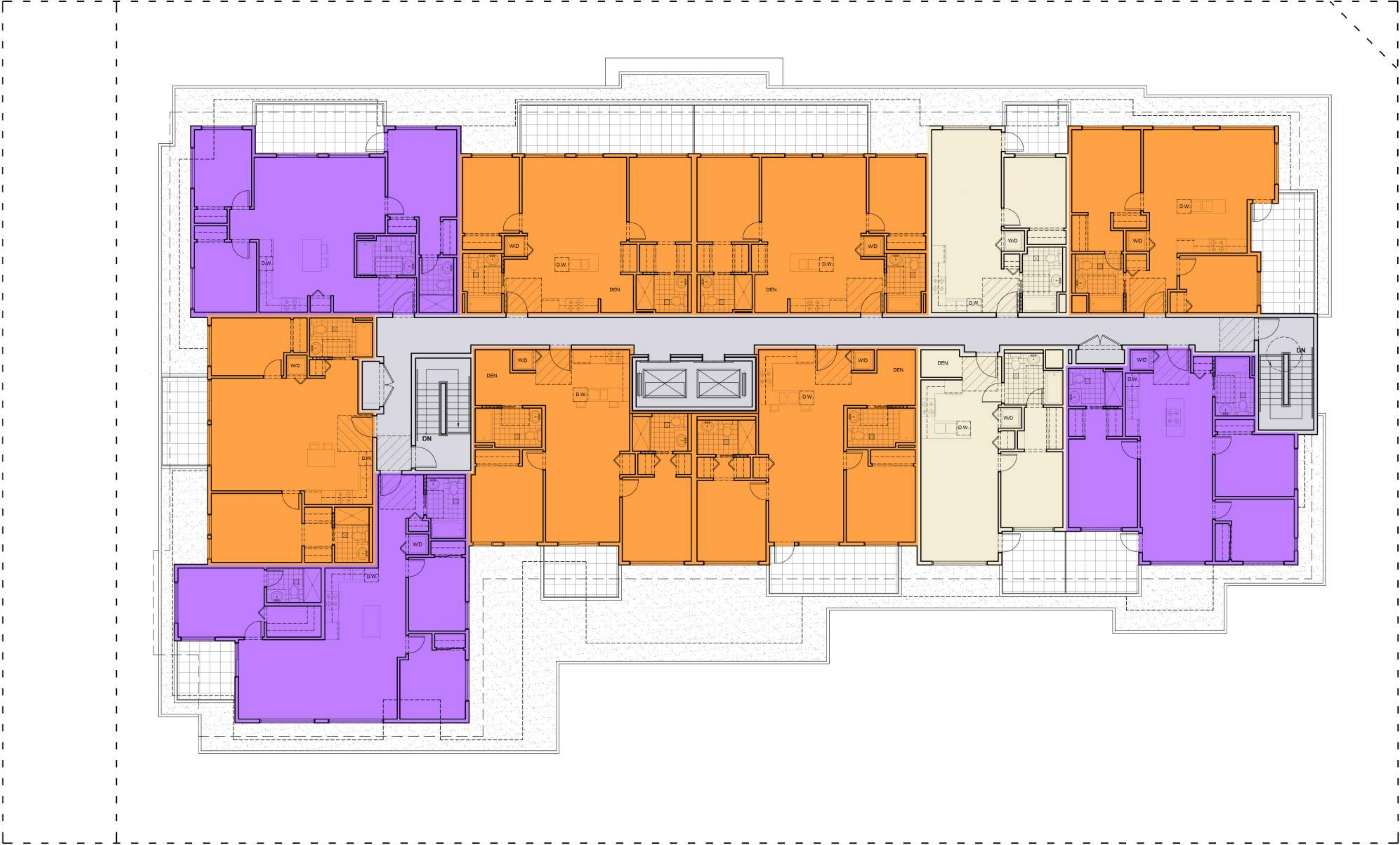
1565-1589 RUPERT STREET RESIDENTIAL DEVELOPMENT

SIXTH FLOOR PLAN



GREEN SPINE

ORWELL STREET



- ENTRY LOBBY AND CORRIDOR
- STUDIOS
- 1- BEDROOM UNITS
- 2- BEDROOM UNITS
- 3- BEDROOM UNITS
- AMENITY SPACE
- SERVICE ROOM

LANE



1565-1589 RUPERT STREET RESIDENTIAL DEVELOPMENT



NORTH ELEVATION



EAST ELEVATION

1565-1589 RUPERT STREET RESIDENTIAL DEVELOPMENT



WEST ELEVATION



SOUTH ELEVATION

1565-1589 RUPERT STREET RESIDENTIAL DEVELOPMENT

NORTH EAST VIEW



SIX STOREY RENTAL BUILDING

95 HOMES FOR:



SENIORS



FAMILIES



STUDENT



83 PARKING SPACES



**TRANSIT- ORIENTED HOUSING WITHIN
500 MUNDER 10 MINUTES WALK FROM
PHIBBS EXCHANGE**

160 BICYCLE PARKINGS



**EXCELLENT ACCESS TO PEDESTRIAN
CYCLING ROUTES**



122 FT FRONTAGE AT GREEN SPINE