

DENIA PARK

1001 Parvin St, Denton, TX 76205
23.52 Acres

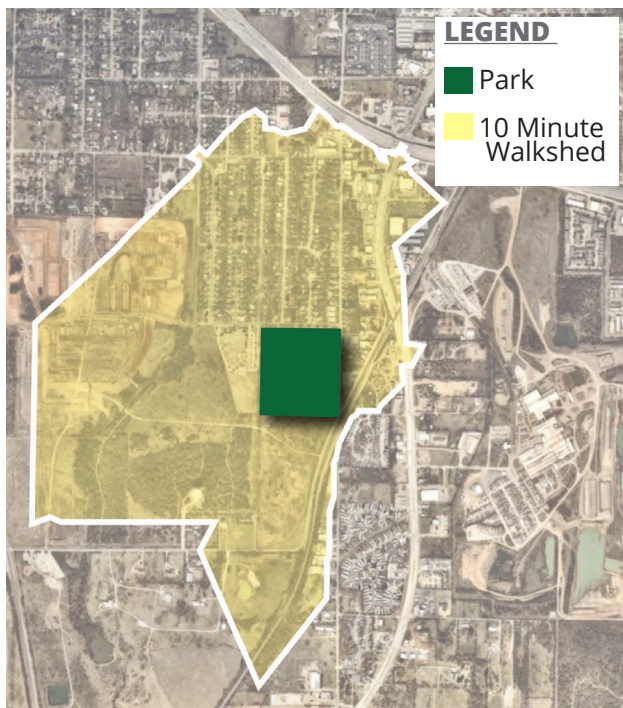
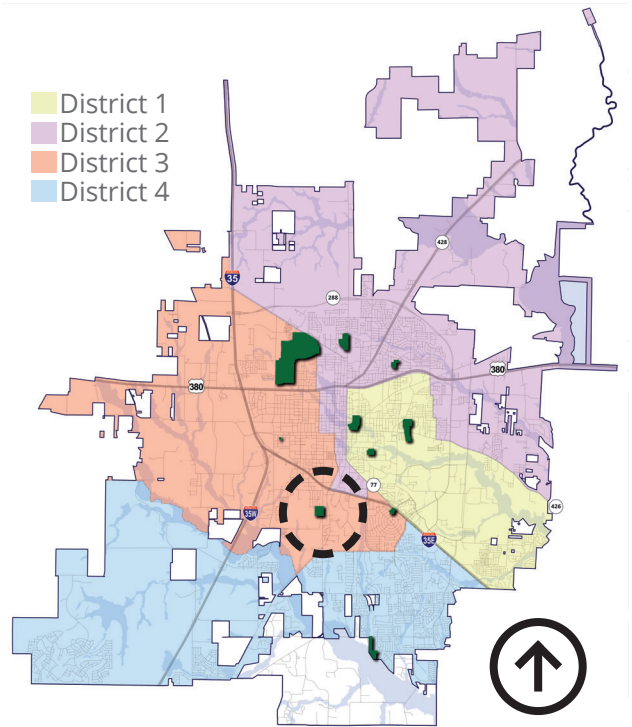
PARK PROFILE

Park District: 3







Park Classification: Community Park

Denia Park is a 23.52 community park that is primarily within a single-family residential neighborhood. Located inside the park is the Denia Recreation Center that has a combined cardio-weight room, indoor basketball court, a game room with public computers, an indoor rock-climbing wall, and three multi-purpose rooms that are available for rentals. Adjacent to the rec center is a sports complex that has four softball fields that feature covered bleachers, dugouts, restrooms, and concession stands.

The north side of the park has two separate playgrounds which offer a diversity of play for children of different ages. A perimeter fence exists on part of the edge of the park along Parvin St. near the playgrounds to prevent children from running out into the street. There are also pavilions that have picnic tables and spaces for public gatherings. In the southern corner of the park is a large sports field that is mainly used for soccer but can be used for different activities. This park also has three half-court basketball courts adjacent to a skating rink. Overall, Denia Park is well connected to the adjacent neighborhood with pedestrian crossing points. Connectivity within the park is also strong - an internal park trail helps connects all the spaces as well.



10 MINUTE WALKSHED STATISTICS

Population	Median Household Income	Median Disposable Income
		
1,090	\$40,341	\$35,331
Households	Median Age	Unemployment
		
386	24.1	8.6%

Source: ESRI, 2020

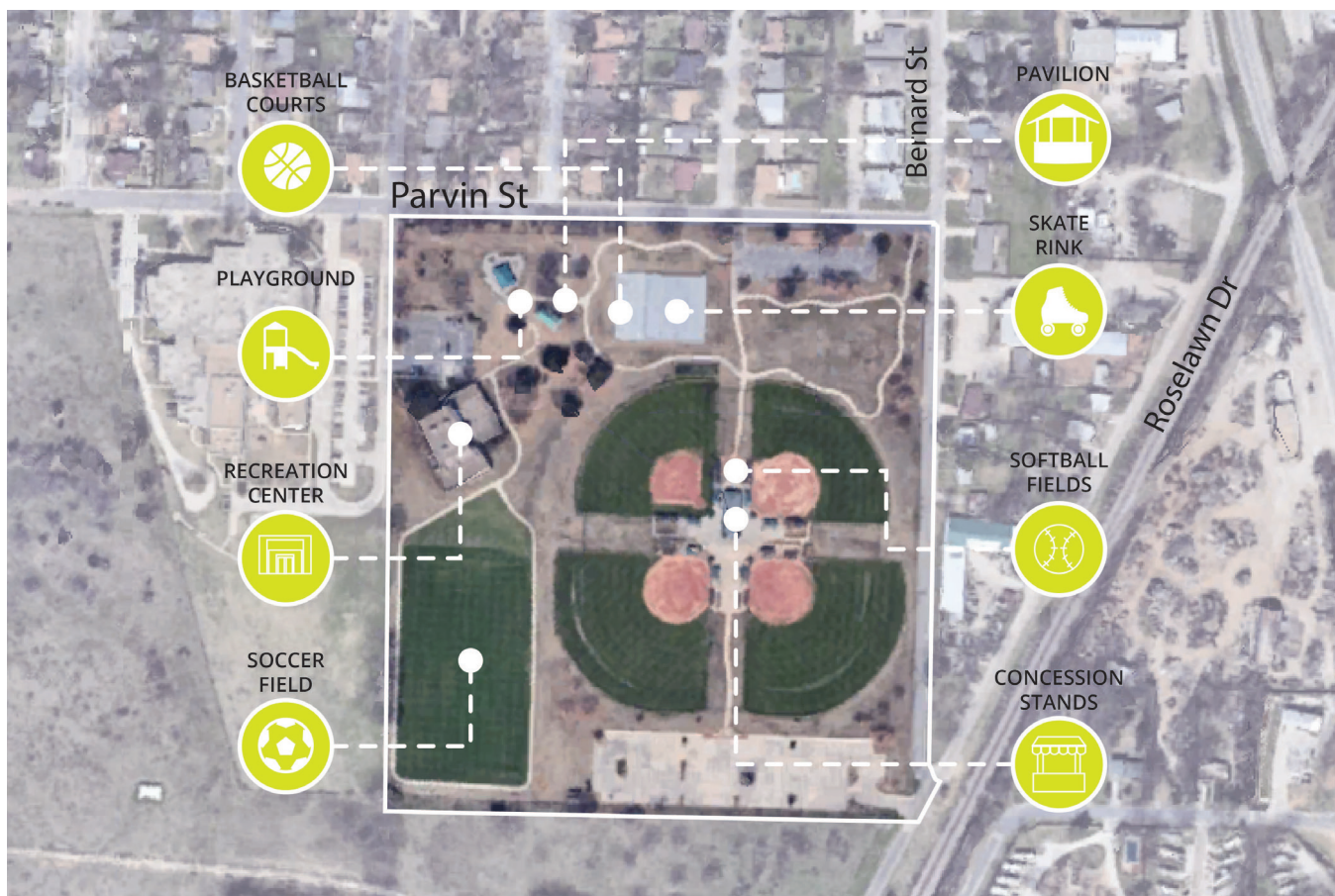
EXISTING CONDITIONS OF AMENITIES

During the park audit visit, a variety of amenities and aspects of the park were assessed based on their condition. The matrix below represents the objective score for each of the components assessed.

- Great/Good
- Moderate
- Poor/Very Poor
- Does Not Exist Today



Sports Courts	
Sports Field	
Park Pathway/Trails	
Public Gathering Spaces	
Additional Site Facilities	
Additional Site Amenities	
Structured Play	
Open Play Area	
Parking	
Connectivity/Access	
Signage	
Plantings & Trees	
Turf	
Arts/Culture	
Overall Experience	



RECOMMENDED PARK IMPROVEMENTS

Based on the park audit visit, several potential improvements were identified that would further enhance the park over time. Recommendations categorized as 'short-term' are recommended to occur in the first five years of plan implementation and those in the 'longer-term' category are recommended to occur in years 5-10+.

Short-Term Goals

- Replace basketball goals and nets
- Add seating adjacent to basketball courts
- Address ADA connection to basketball courts
- Add shading to bleachers that are not covered
- Add additional crosswalk along Parvin St. to connect park to surrounding neighborhood
- Add additional entry signage at entrance to southern parking lot off Roselawn Dr.
- Add mileage markers along the walking trail

Longer-Term Goals

- Incorporate wayfinding signage throughout the park to direct to amenities
- Add groundcover under shaded areas
- Update batting cages to improve overall maintenance
- Incorporate cluster of tree groves in open space areas and along trails to provide shaded respite areas
- Incorporate pathway to provide direct connection from southern parking lot to soccer field
- Add more shade trees in parking lot areas
- Explore the possibility of a community garden in conjunction with the recreation center



PLANNING LEVEL COST ESTIMATES

SHORT-TERM GOALS: \$255,000 - \$295,000

LONGER-TERM GOALS: \$545,000 - \$730,000

**Costs shown are 2021 values at a pre-design level, and will vary as more detailed design occurs. List is for guidance in planning, and not all items may be implemented. Grants, donations and park land dedication may reduce the cost of each item significantly. The range shown incorporates a 3% increase in annual inflation over five years.*



Internal Walking Path