

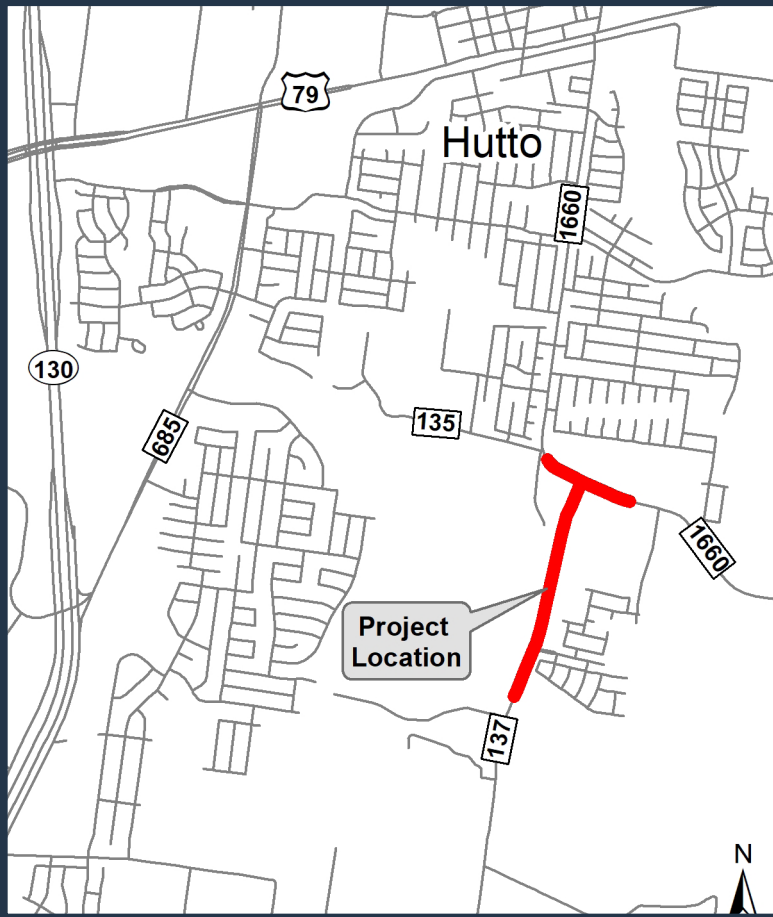


CR 137 Roadway and Drainage Improvements

WHAT IS THE CR 137 ROADWAY AND DRAINAGE IMPROVEMENTS PROJECT?

The City of Hutto is proposing roadway and drainage improvements to County Road (CR) 137 from North of Brushy Creek to Farm-to-Market Road (FM) I660, and intersection improvements at CR 137 and FM I660. The area is rapidly developing and the City of Hutto is planning for the future by proposing improvements to CR 137. This project will replace existing pavement as well as improve vehicle and pedestrian safety.

PROJECT LIMITS - APPROXIMATELY 1 MILE FROM NORTH OF BRUSHY CREEK TO FM I660



WHAT IMPROVEMENTS ARE BEING PROPOSED?

The existing roadway sections consist of two approximately 12-foot-wide lanes with 4-foot-wide shoulders with open ditches on both sides. Proposed improvements consist of roadway and intersection reconstruction, including a signalized intersection or roundabout reconfiguration at CR 137/FM I660. The proposed improvements include widening CR 137 to allow for a center turn lane and widening FM I660 to four lanes with a center turn lane on FM I660.

WHAT IS NEXT?

The project team is analyzing the alternatives as part of the preliminary design phase. Once a preferred intersection alternative is selected, the project will move into final design. At that time, environmental studies will be conducted. After the project meets environmental compliance, the right-of-way acquisition and utility relocation process will begin.

COMMENTS?

In-Person: Submit comment forms to meeting staff

Email: Stella.Gonzales@HuttoTX.gov

Mail: City of Hutto
ATTN: Stella Gonzales
500 W Live Oak Street
Hutto, TX 78634

Comments must be received by April 28, 2023



PROJECT QUESTIONS?

Matt Rector

Matt.Rector@HuttoTX.gov

Dept. of Public Works - (512) 759-4023