



Westminster Choir College: Site Characteristics and Design Objectives

Prepared by Topology and
Common Ground Design

November 2025

1

Phase One (Complete): Develop a project plan involving key decision points.

2

Phase Two (Current): Develop an informed project vision.

- *Site analysis*
- *Design objectives*

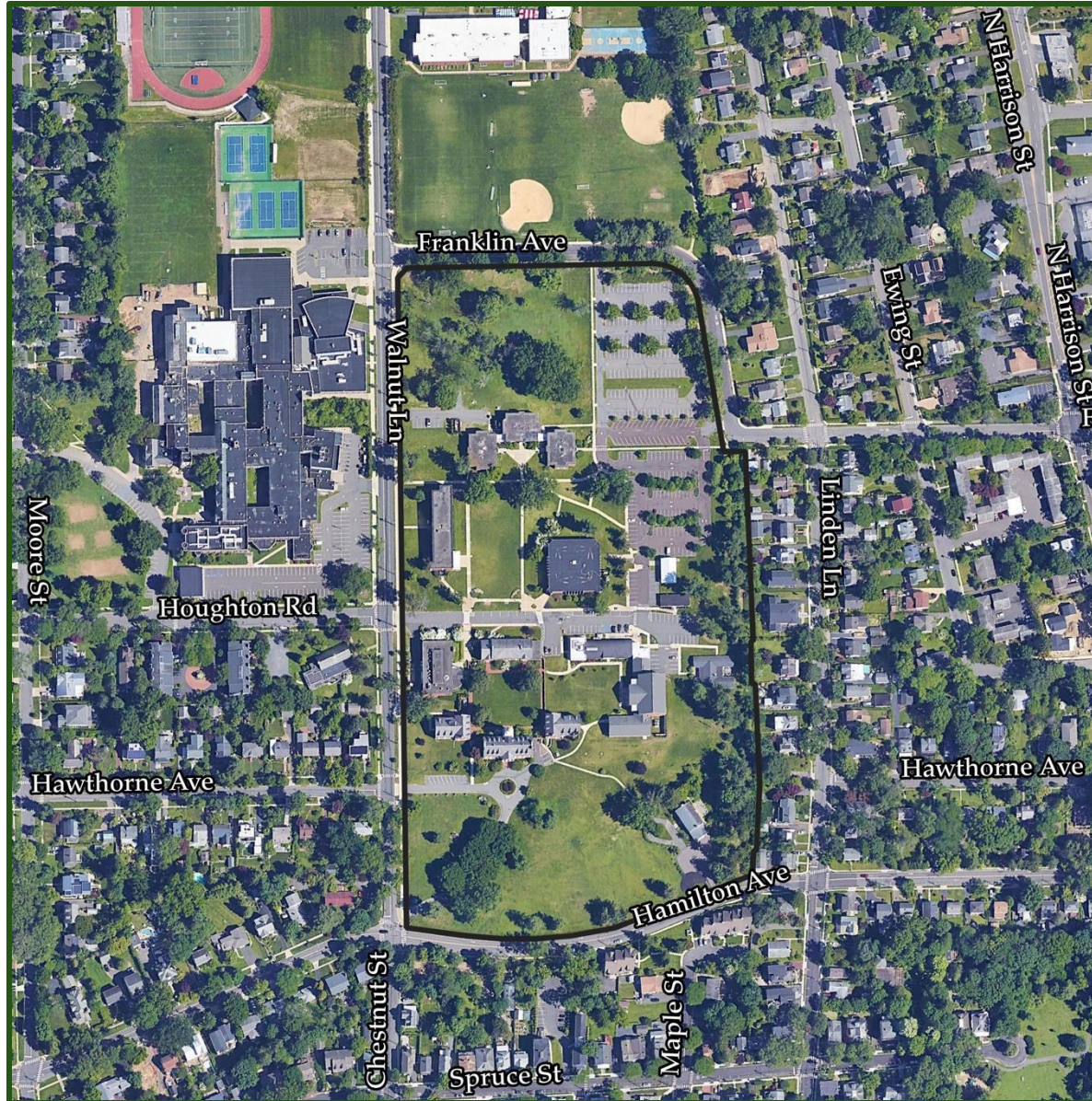
3

Phase Three (Future): Explore design alternatives.

4

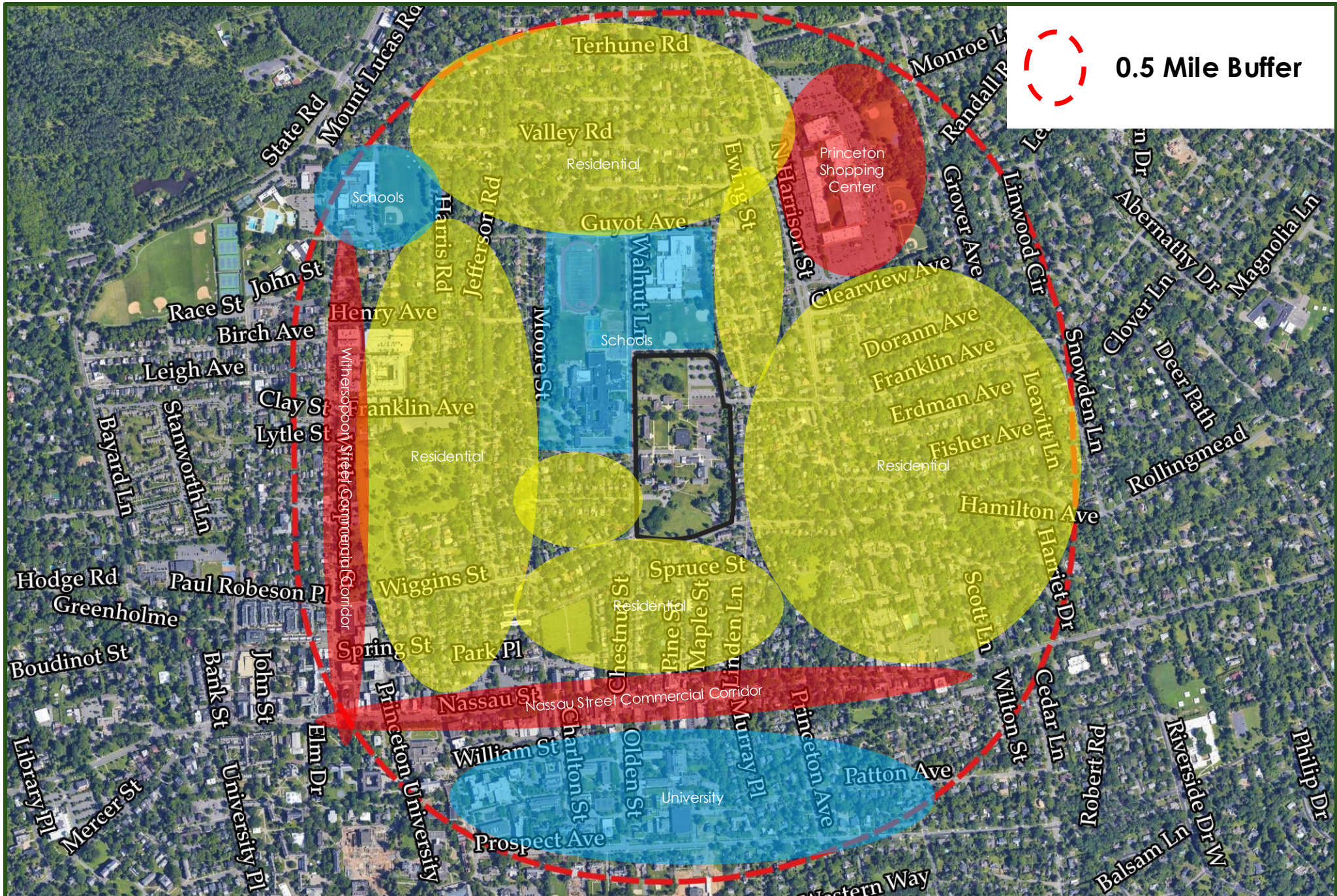
Phase Four (Future): Develop a preferred alternative.

SITE CHARACTERISTICS & CONSTRAINTS



Aerial imagery of the Site

SITE CONTEXT



SITE CHARACTERISTICS & CONSTRAINTS

SIZE OVERVIEW

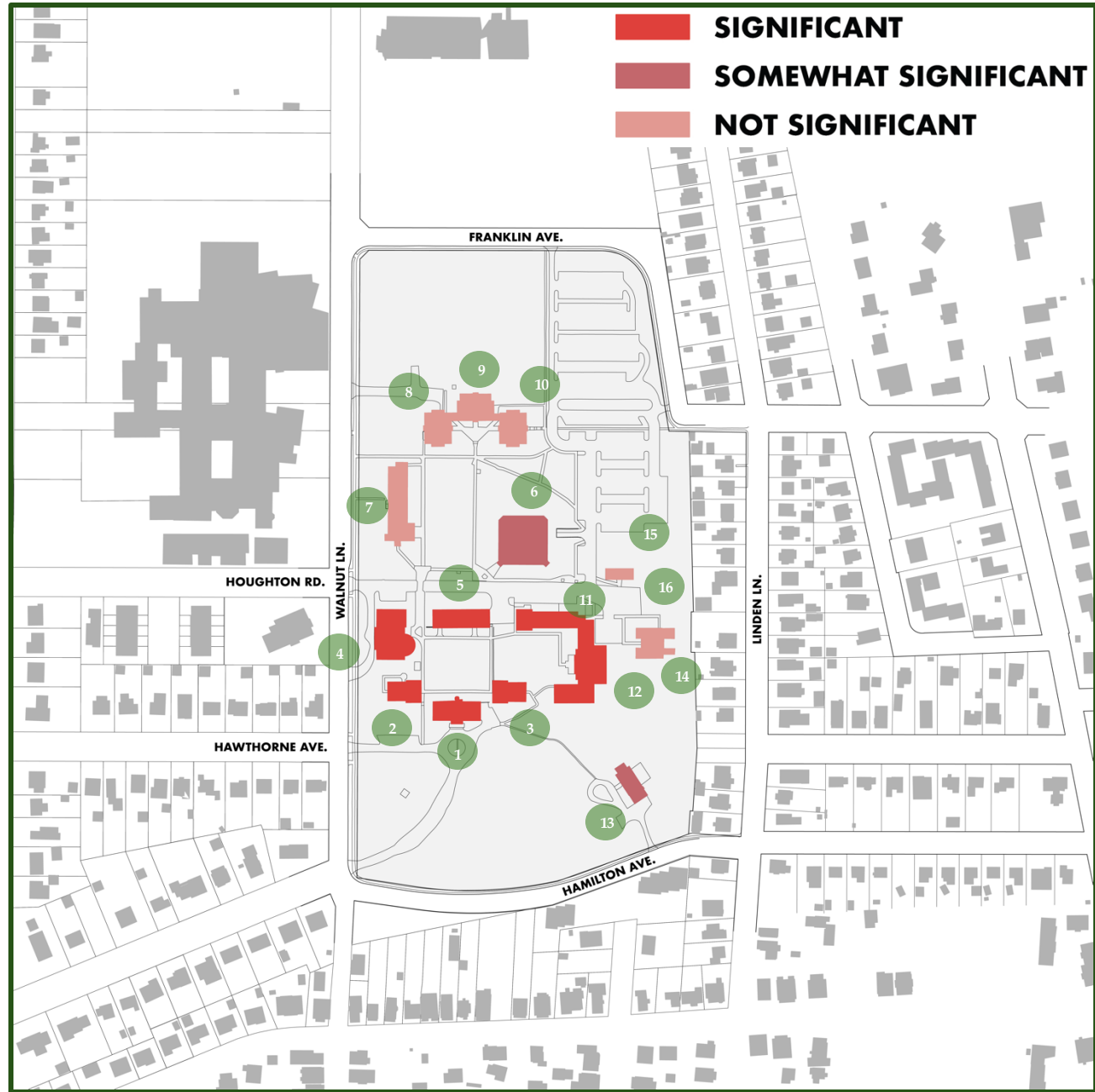


Depiction of 5 acre, 10 acre, 15 acre and 20 acre areas, as mapped on Site

SITE CHARACTERISTICS & CONSTRAINTS

BUILDINGS MAP

ID #	Building Name
1	Williamson Hall
2	Erdman/Presser Music Center
3	Taylor Hall
4	Scheide Student Center
5	Bristol Hall
6	Talbott Library
7	Seabrook Hall
8	Dayton Hall
9	Ithaca Hall
10	Princeton Hall
11	Robert L. Annis Playhouse
12	Cullen Center & Hillman Hall
13	Hamilton House (Dean's Residence)
14	Cottage
15	Maintenance Shed
16	Relocatable Classroom



Significance of Buildings on Site

SITE CHARACTERISTICS & CONSTRAINTS

BUILDINGS



Williamson Hall



Erdman Hall/Presser Music Center



Taylor Hall



Scheide Student Center

SITE CHARACTERISTICS & CONSTRAINTS

BUILDINGS



*Bristol Chapel
(part of McCarter Theater EDA application)*



*Robert L. Annis Playhouse
(part of McCarter Theater EDA application)*



Talbot Library



Cullen Center & Hillman Hall

SITE CHARACTERISTICS & CONSTRAINTS

BUILDINGS



Ithaca Hall



Princeton Hall



Seabrook Hall



Dayton Hall

SITE CHARACTERISTICS & CONSTRAINTS

BUILDINGS



Hamilton House



Cottage



Maintenance Shed



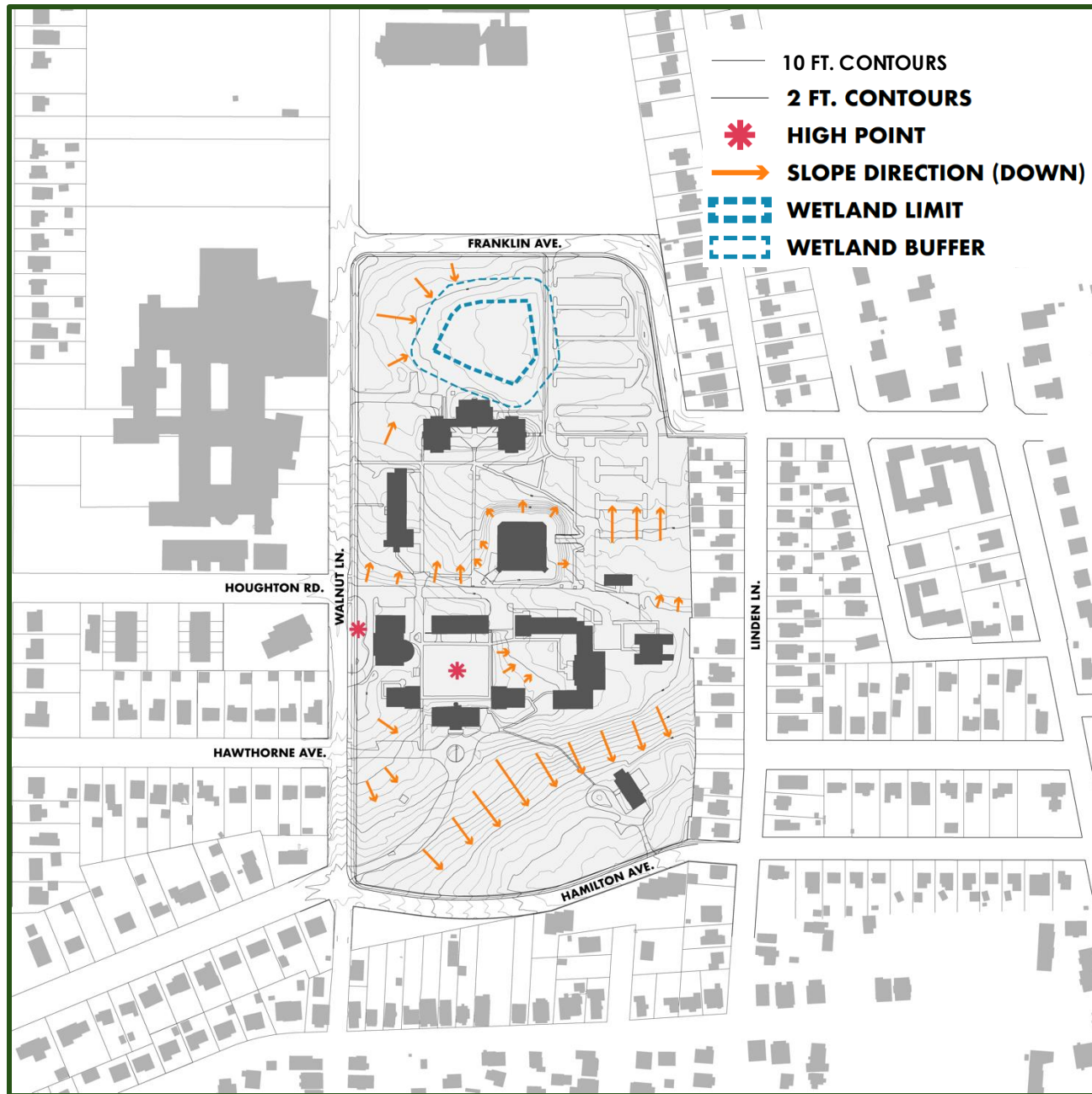
Relocatable Classroom

SITE CHARACTERISTICS & CONSTRAINTS

SUB AREAS

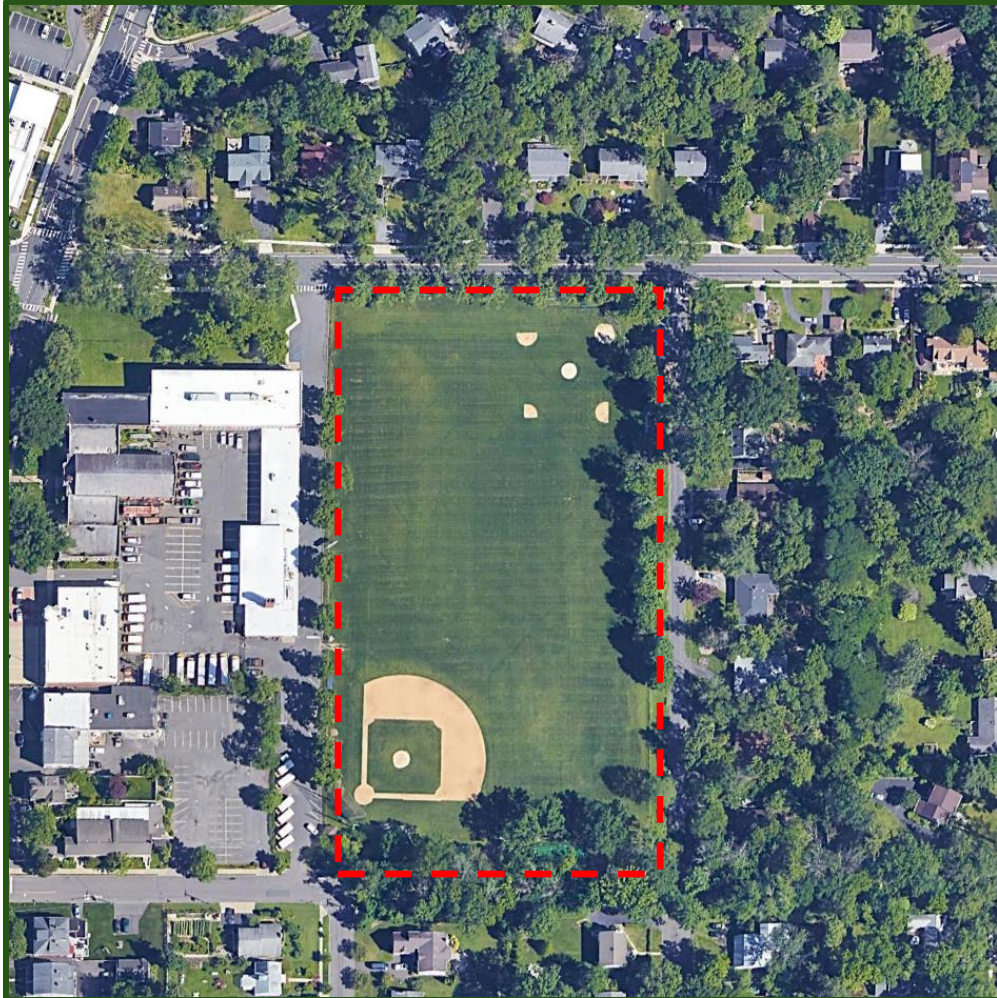


SITE CHARACTERISTICS & CONSTRAINTS

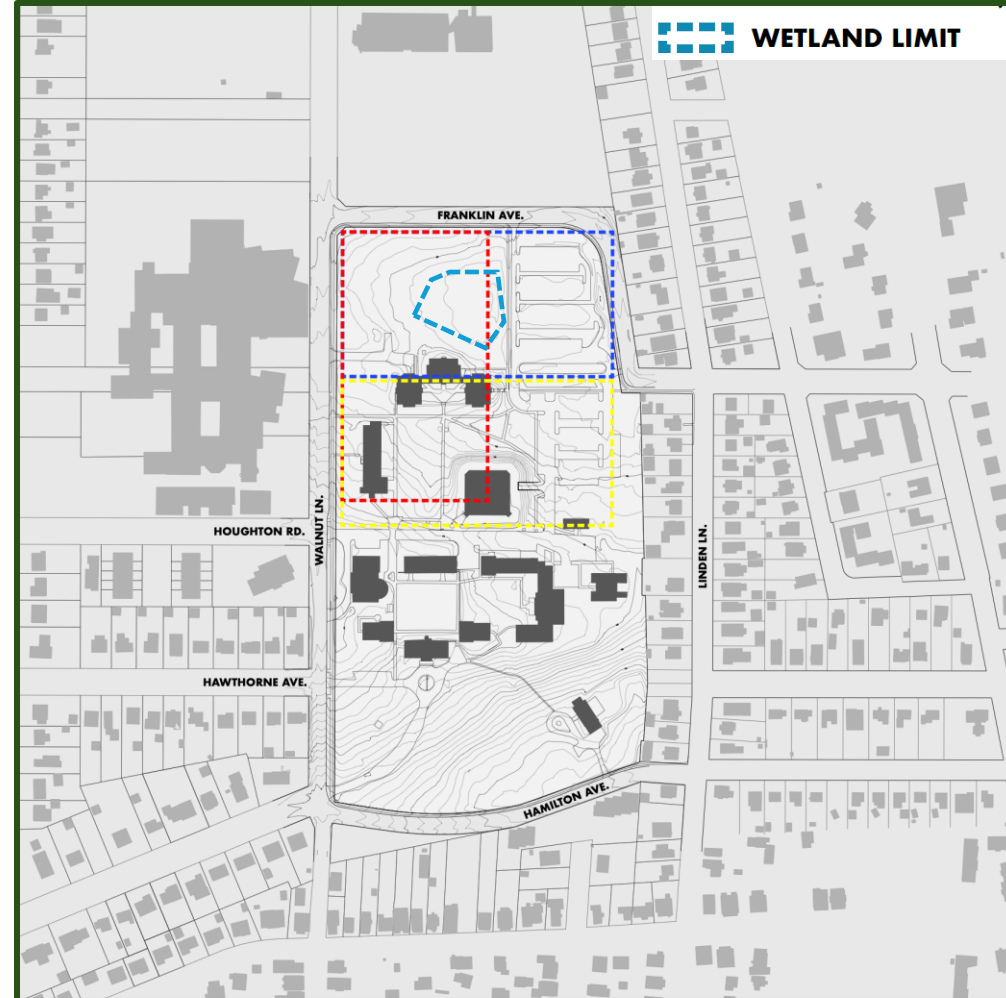


Map depicting environmental constraints and topography

WETLANDS IMPLICATIONS

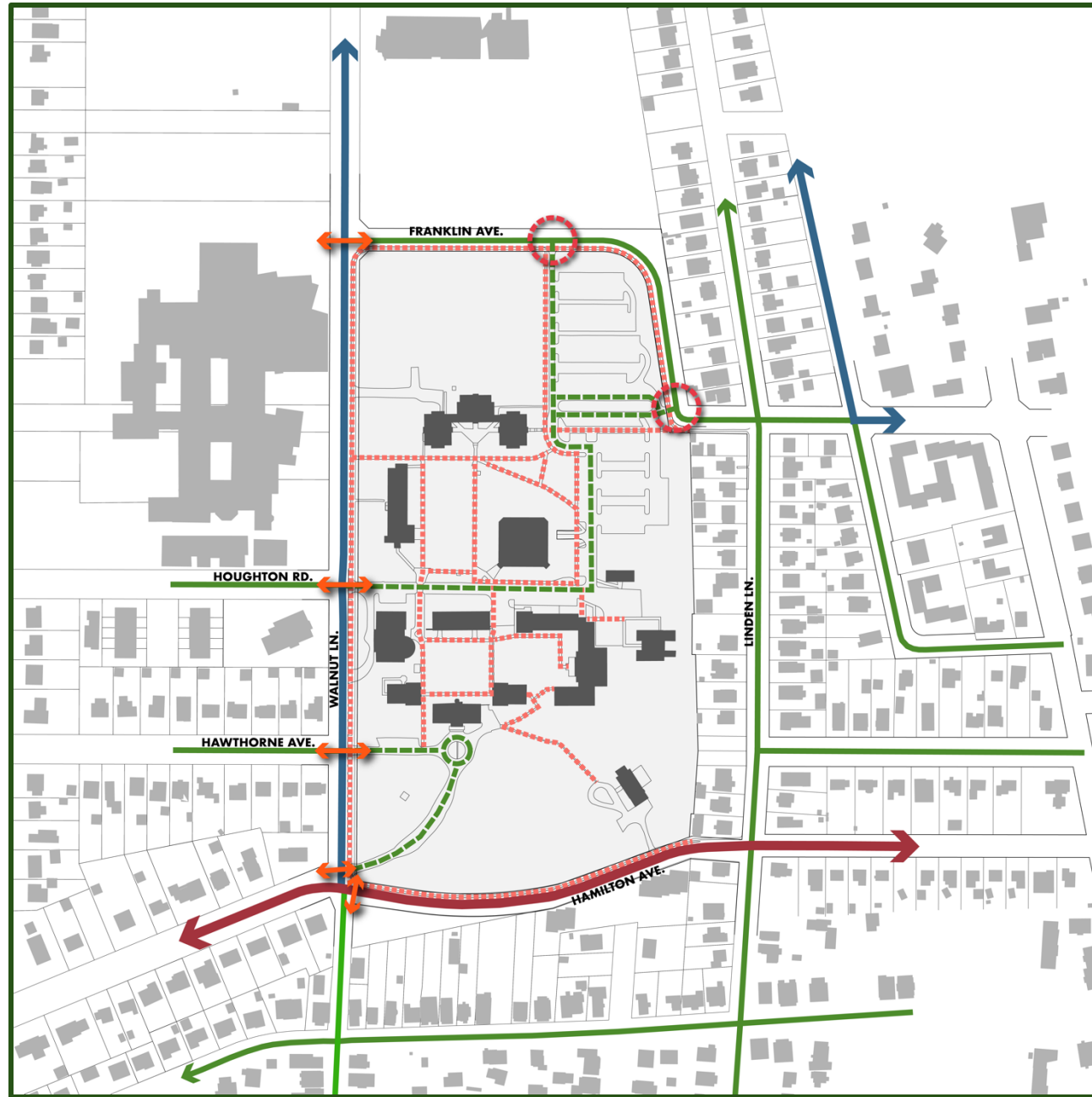


Valley Road field for context



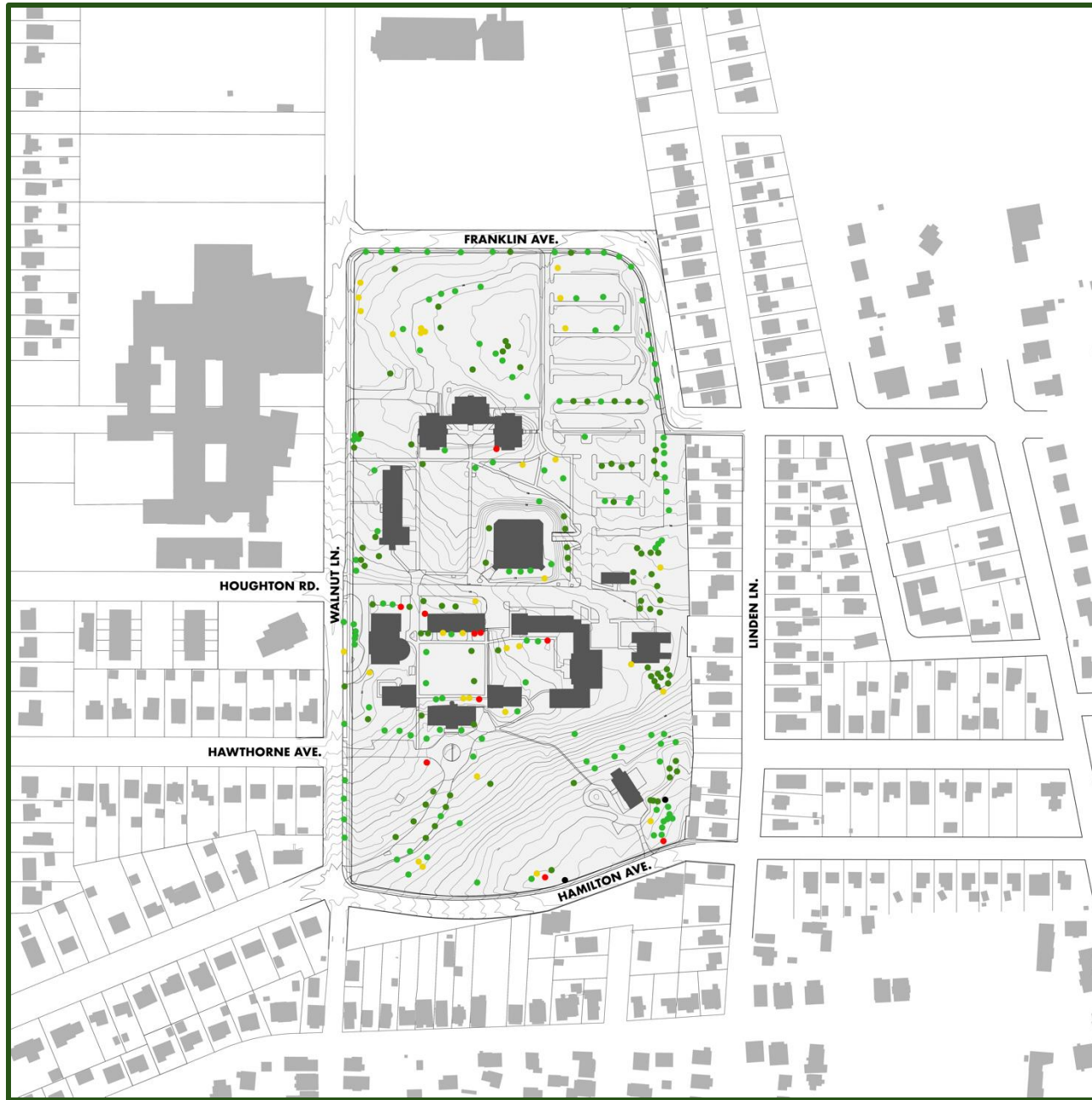
Depiction of Valley Road fields relative to wetlands limits

SITE CHARACTERISTICS & CONSTRAINTS



- MINOR ARTERIAL
- MINOR COLLECTOR
- LOCAL STREET
- SIGHT ISSUES
- PEDESTRIAN CROSSING
- VEHICULAR CIRCULATION
- VEHICULAR CIRCULATION

Site mobility analysis



Existing trees on site based on condition


OBJECTIVES



Input was collected during tabling events on June 19th (pictured) and June 22nd, 2025

What would you most like to see included in the reimagined Westminster Choir College campus?

Submit

Proudly made with  SurveyLegend®

One-question survey

*More
engagement
to come!*

OBJECTIVES

Objectives were developed based on research conducted and input from stakeholders. Collectively, these objectives form the vision for the site and will provide the framework for the concept alternatives that will be developed in the subsequent phase.

1. Retain key existing site assets, including, at minimum, the Historic Quad, Cullen Center, and Playhouse.
2. Retain and appropriately activate at least a portion of the Lawn area.
3. Be financially feasible.
4. Allocate a portion of the property for school district needs.
5. Include open spaces for active or passive recreation.
6. Comply with wetlands regulations.
7. Include space for arts and culture uses generally.
8. Include space for Westminster Conservatory.
9. Accommodate McCarter Theatre's NJEDA CAFE grant.
10. Address municipal facilities needs, including existing Monument Hall / Suzanne Patterson Center uses.
11. Accommodate parking needs without allowing parking to dominate the site.
12. Respect existing buffers with neighboring properties.
13. Integrate site into broader circulation pattern, particularly for bikes and pedestrians.
14. Respect mature trees by following recommendations of Princeton's arborist.
15. Provide flexible areas for use by community organizations.

OBJECTIVES

Next Steps

Thanks!