

The Colliers logo consists of the word "Colliers" in a white serif font, centered within a dark blue rectangular box. Below the box is a horizontal bar with a rainbow gradient from red to blue.

Project Leaders

A photograph of a two-story red brick school building. The words "FRENCHTOWN SCHOOL" are mounted on the brick wall in large, white, sans-serif capital letters. To the left, there is a covered entrance area with a blue metal frame. A parking lot with some snow is in the foreground. A "SHORT TERM VISITOR PARKING" sign is visible on the wall. The sky is overcast.

FRENCHTOWN SCHOOL

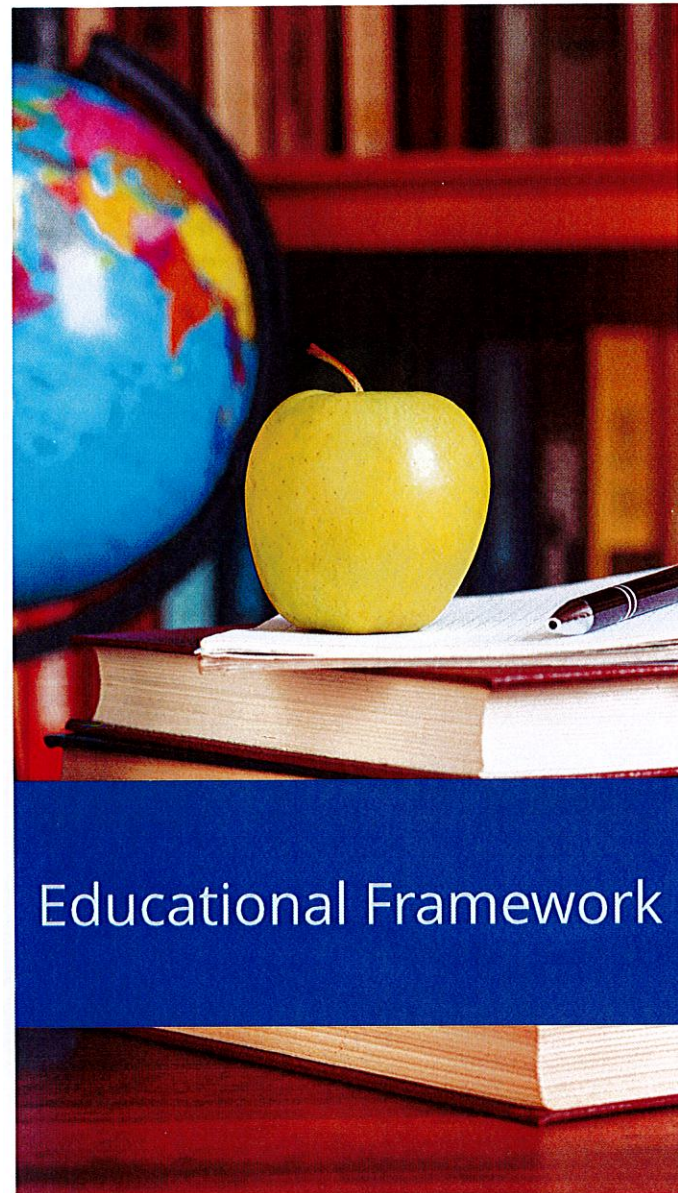
East Greenwich Schools

Capital Improvements

March 8, 2023

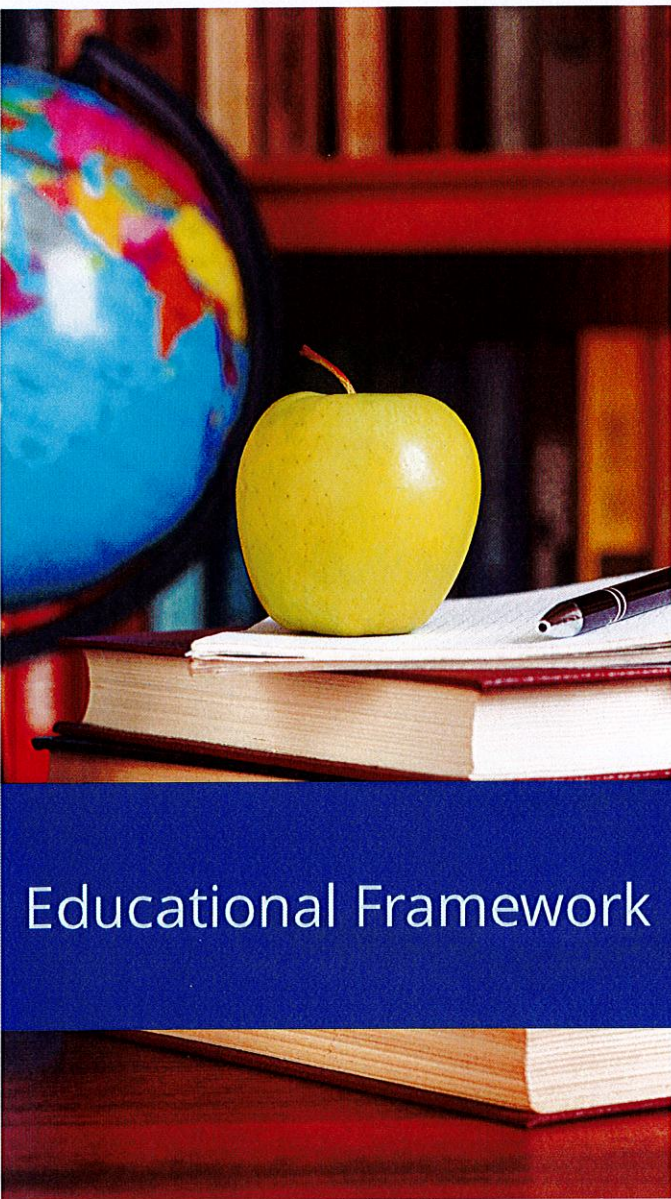
Prepared by: Colliers Project Leaders
& East Greenwich Schools

Accelerating success



Educational Framework

- **Accessibility / Inclusiveness**
- **Flexibility**
- **Collaboration**



Educational Framework

- **Technology Integration**
- **Health & Well-Being**
- **Sustainability**

Agenda

Criteria / Parameters for Option Development

Eldredge Adaptive Reuse

Elementary School Options

Option Feasibility

Matrix Analysis



Criteria / Parameters for Option Development

Criteria / Parameters for Option Development

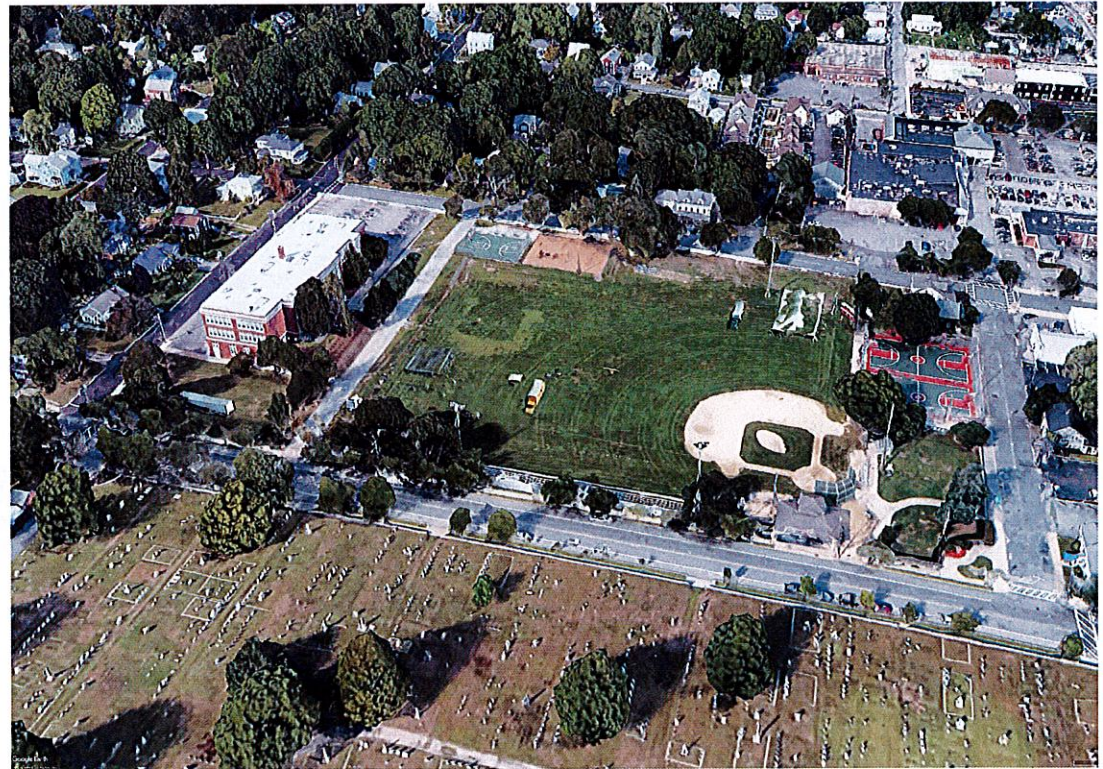
- Site Constraints
- Traffic Considerations
- Overall Project / Program Impact
- Cost Value Impact



Eldredge Adaptive Reuse

Eldredge ES Adaptive Reuse

- *Recreation Center*
- *Wellness Resource*
- *Meeting Spaces*
- *Incubator Space*
- *Offices (Town, School, etc.)*
- *Museum/Historic Center*
- *Community Resource*



Elementary School Options

Elementary School Options

Planning Options *Option A*

- New Build at Frenchtown Grades 3-5 *District Wide*
- Add/Reno at Hanaford Grades K-2 *Neighborhood School*
- Add/Reno at Meadowbrook Grades PK-2 *Neighborhood School*
- *Eldredge Closed as a School*



Elementary School Options

Planning Options *Option B*

- New Build at Frenchtown Grades PK-5 *Neighborhood School*
- New Build at Hanaford Grades PK-5 *Neighborhood School*
- *Eldredge Closed as a School*
- *Meadowbrook Closed as a School*



Elementary School Options

Planning Options *Option C*

- New Build at Frenchtown Grades 1-5 *Neighborhood School*
- New Build at Hanaford Grades 1-5 *Neighborhood School*
- Reno at Meadowbrook Grades PK-K *District Wide*
- *Eldredge Closed as a School*



Option Feasibility

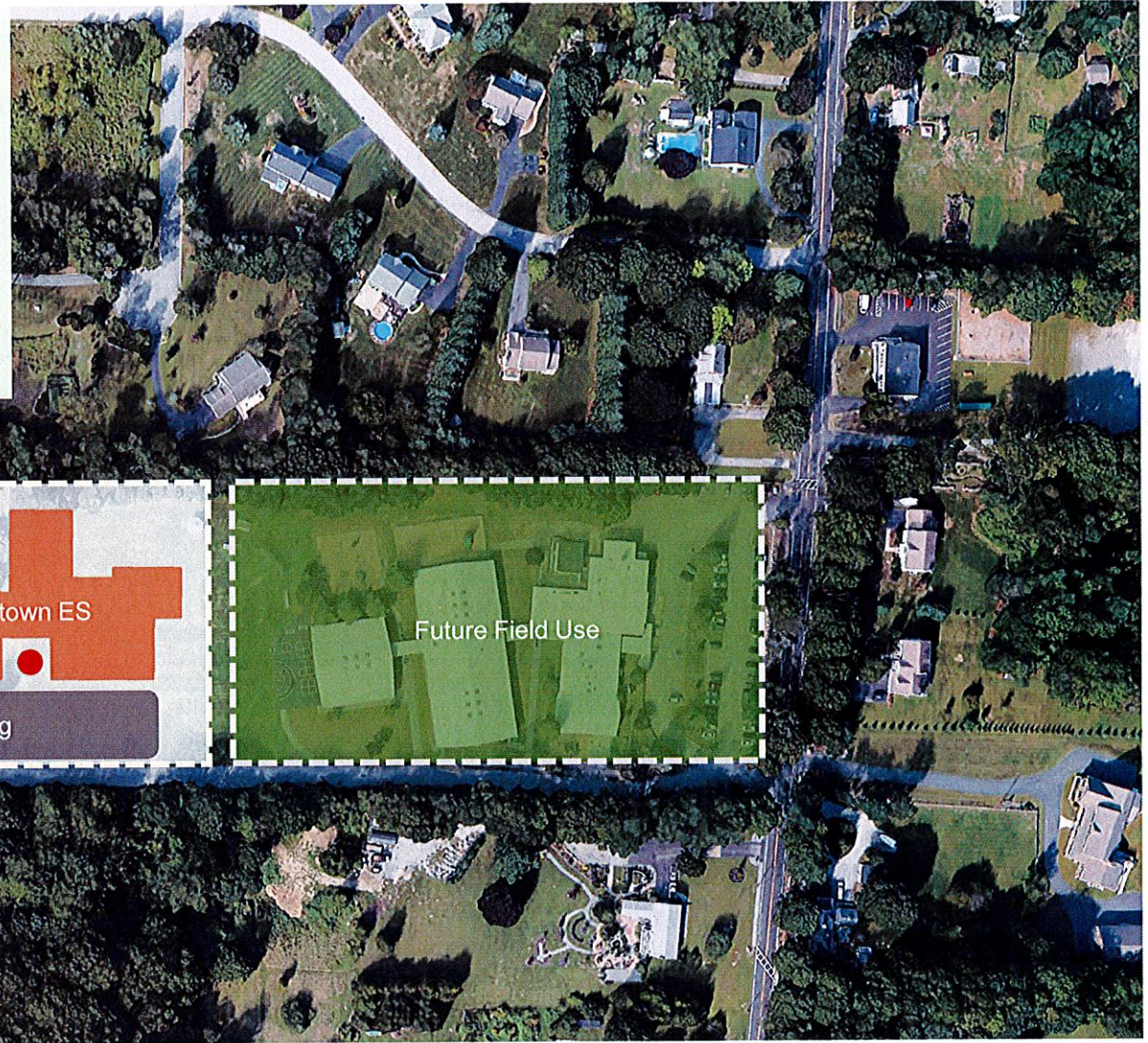
A Validation Exercise of the Programming

Not a Design Solution

To Be Further Developed Through Community Engagement

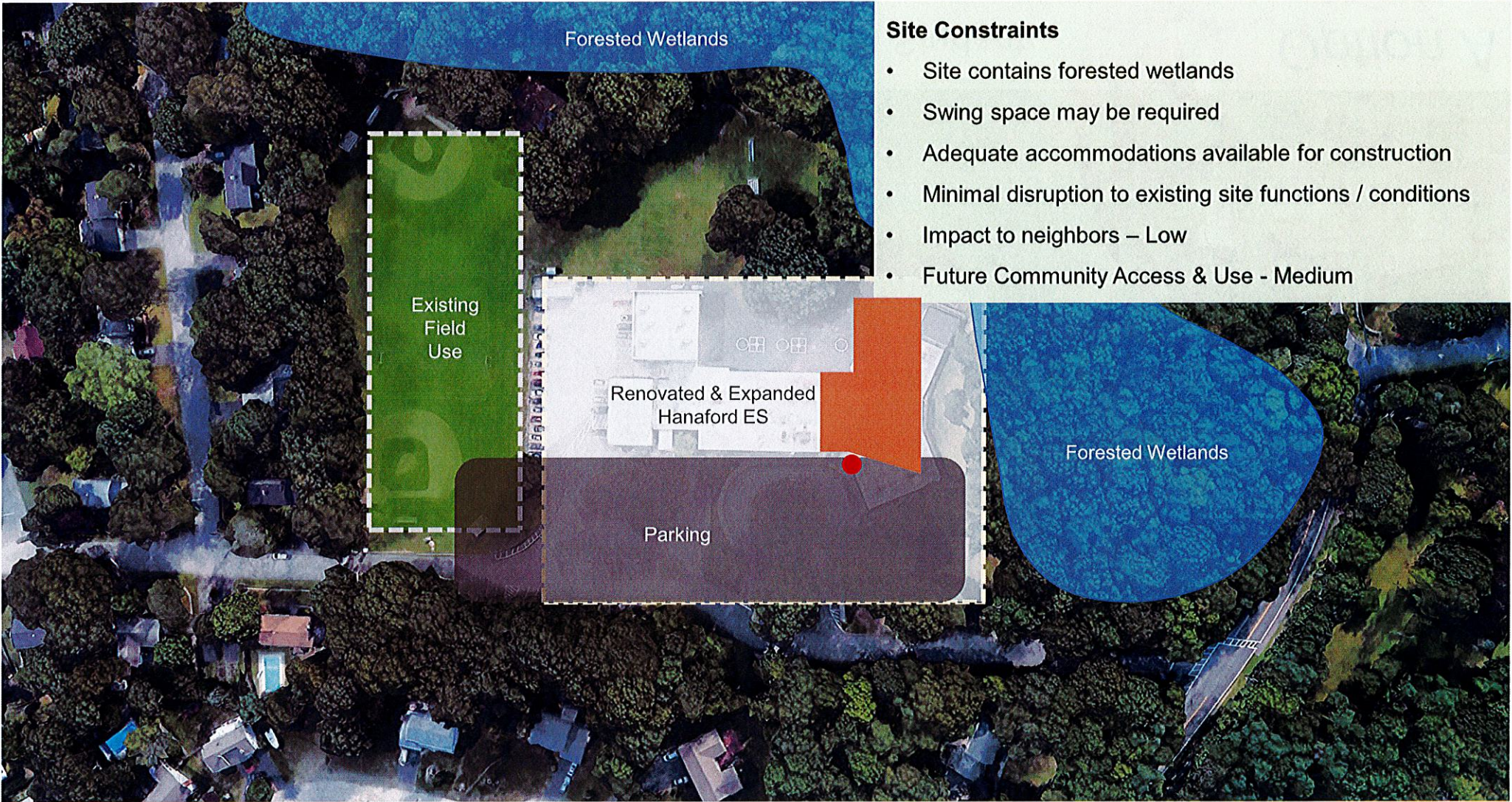
Site Constraints

- No major physical site constraints
- No swing space required
- Adequate accommodations available for construction
- Limited disruption to existing site functions / conditions
- Impact to neighbors – Low
- Future Community Access & Use - High



Frenchtown ES Grades 3 thru 5 @ 600 Student

Option A



Site Constraints

- Site contains forested wetlands
- Swing space may be required
- Adequate accommodations available for construction
- Minimal disruption to existing site functions / conditions
- Impact to neighbors – Low
- Future Community Access & Use - Medium

Hanaford ES Grades K thru 2 @ 300 Student

Option A

Site Constraints

- Swing space may be required
- Adequate accommodations available for construction
- Moderate disruption to existing site functions / conditions
- Impact to neighbors – Low
- Future Community Access & Use - Low



Meadowbrook ES Grades PK thru 2 @ 350 Student

Option A

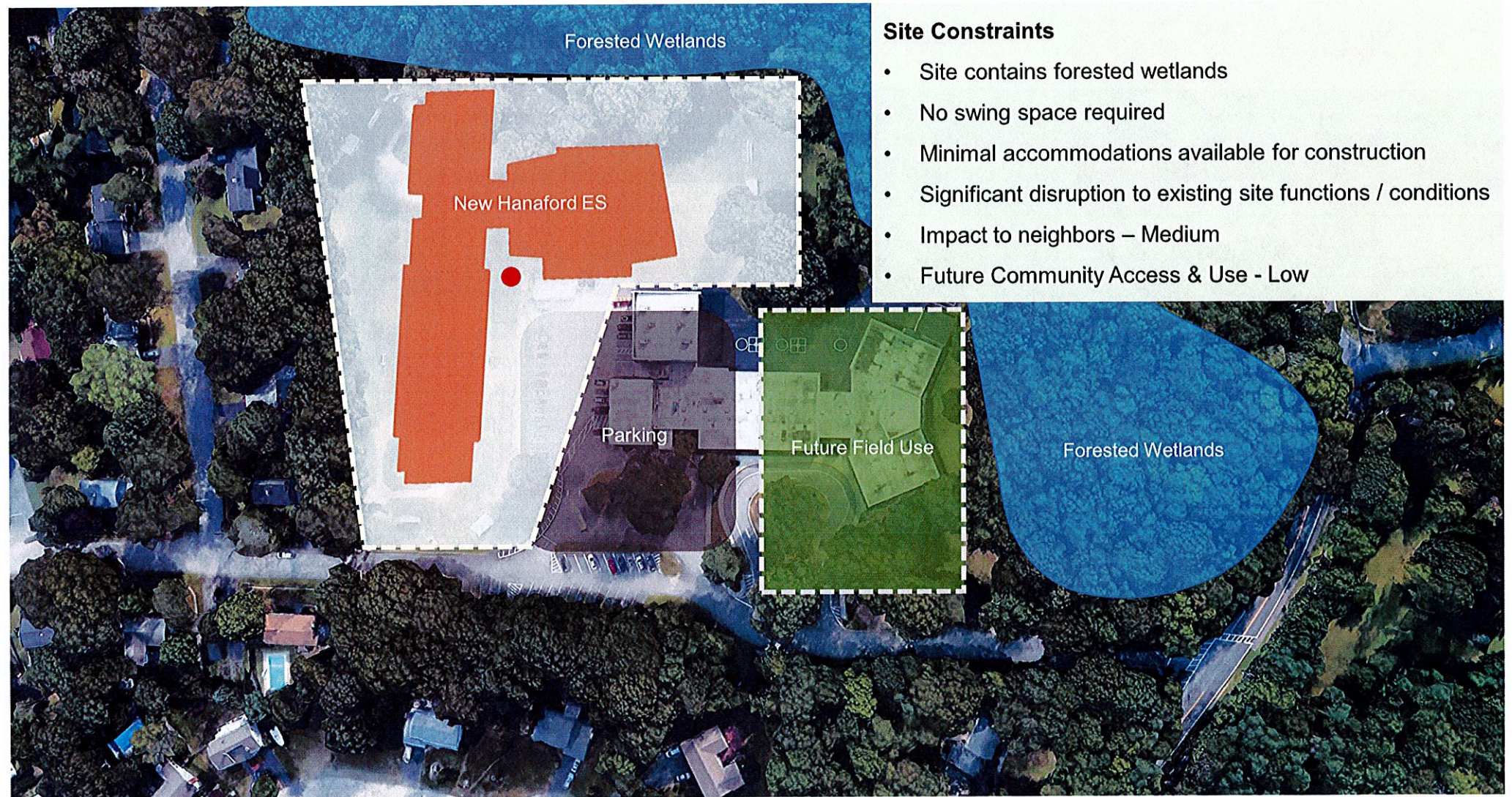
Site Constraints

- No major physical site constraints
- No swing space required
- Adequate accommodations available for construction
- Limited disruption to existing site functions / conditions
- Impact to neighbors – Low
- Future Community Access & Use - High



Frenchtown ES Grades PK thru 5 @ 600 Student

Option B



Site Constraints

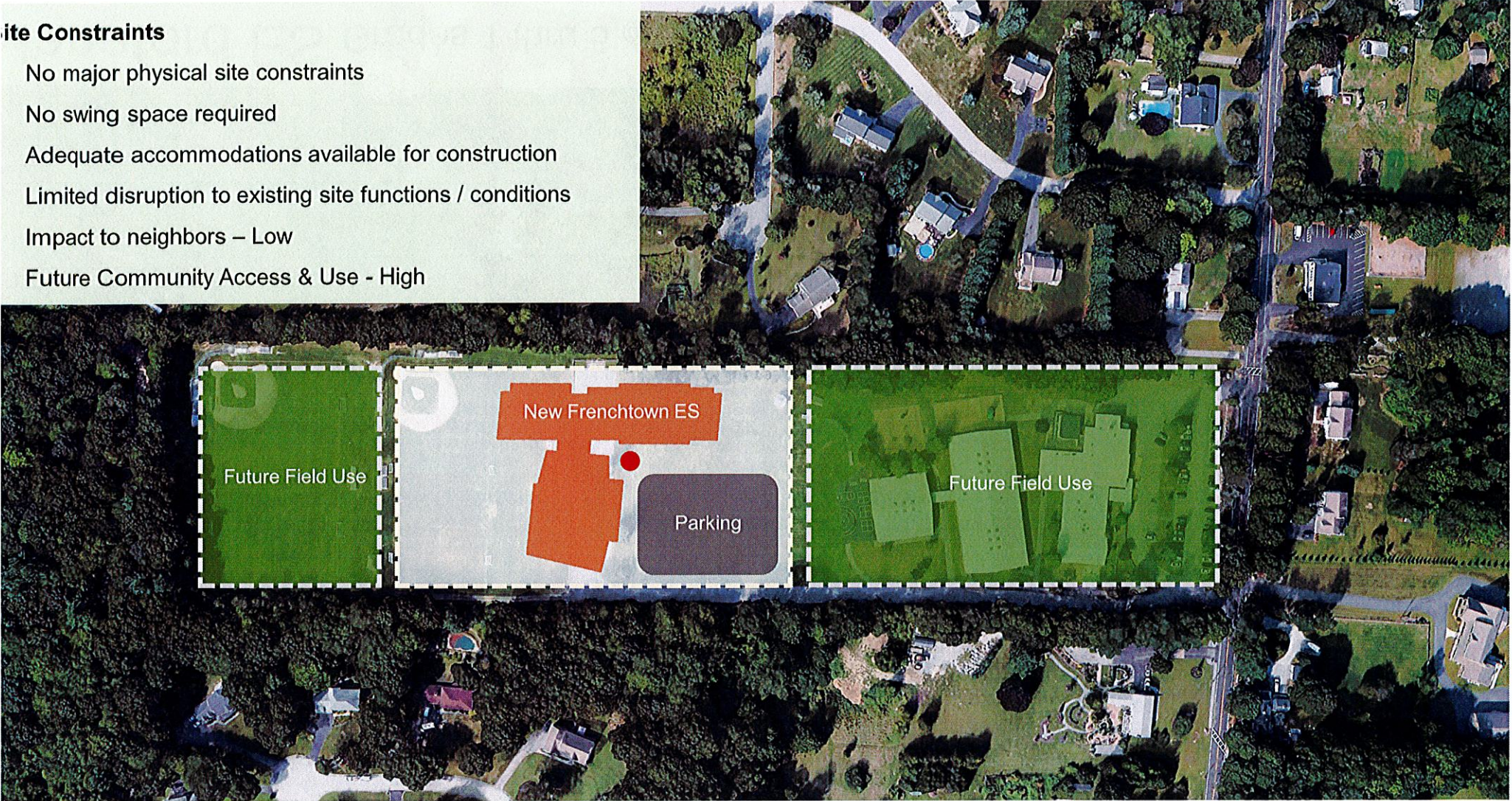
- Site contains forested wetlands
- No swing space required
- Minimal accommodations available for construction
- Significant disruption to existing site functions / conditions
- Impact to neighbors – Medium
- Future Community Access & Use - Low

Hanaford ES Grades PK thru 5 @ 600 Student

Option B

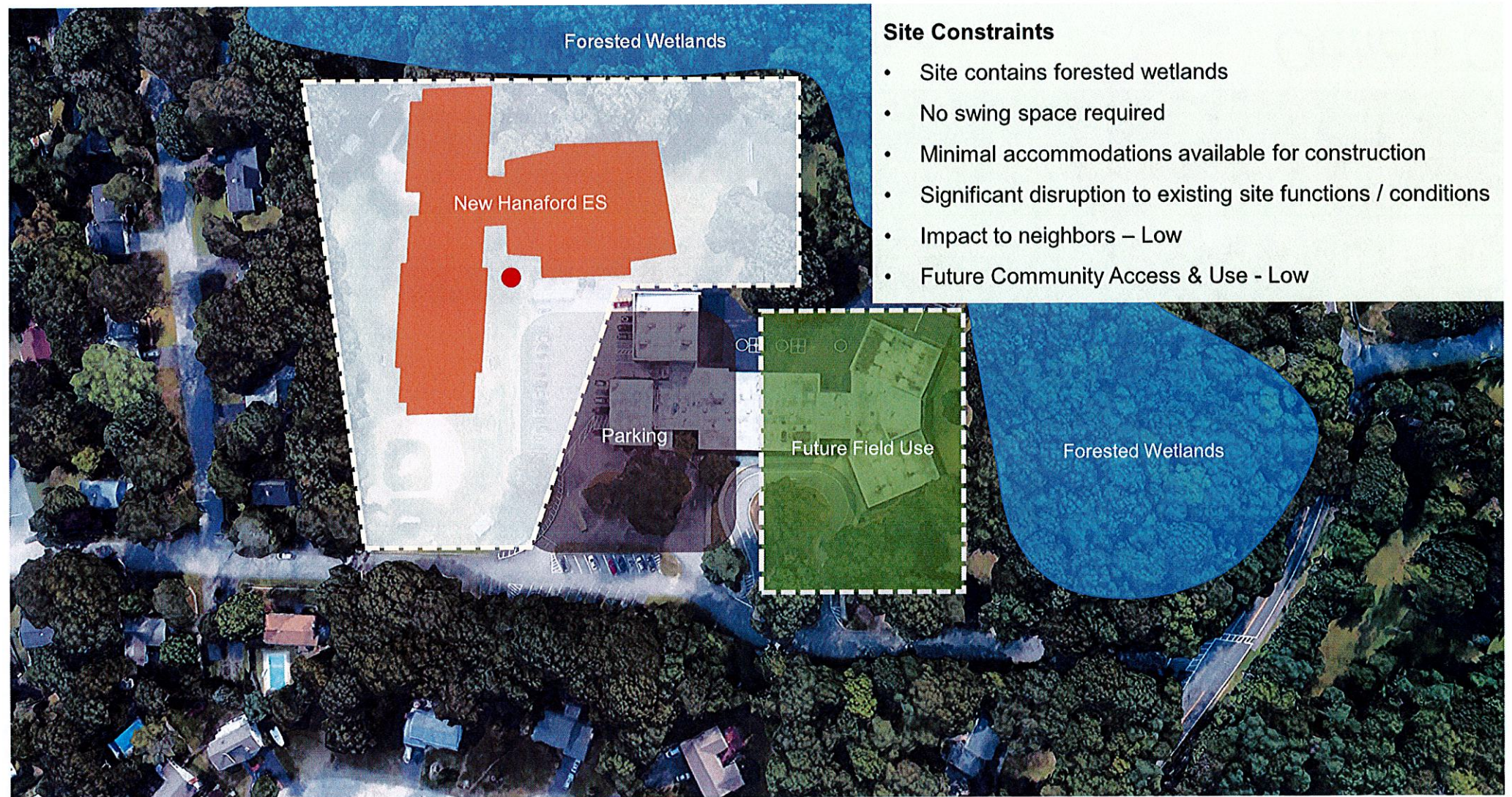
Site Constraints

- No major physical site constraints
- No swing space required
- Adequate accommodations available for construction
- Limited disruption to existing site functions / conditions
- Impact to neighbors – Low
- Future Community Access & Use - High



Frenchtown ES Grades 1 thru 5 @ 500 Student

Option C



Site Constraints

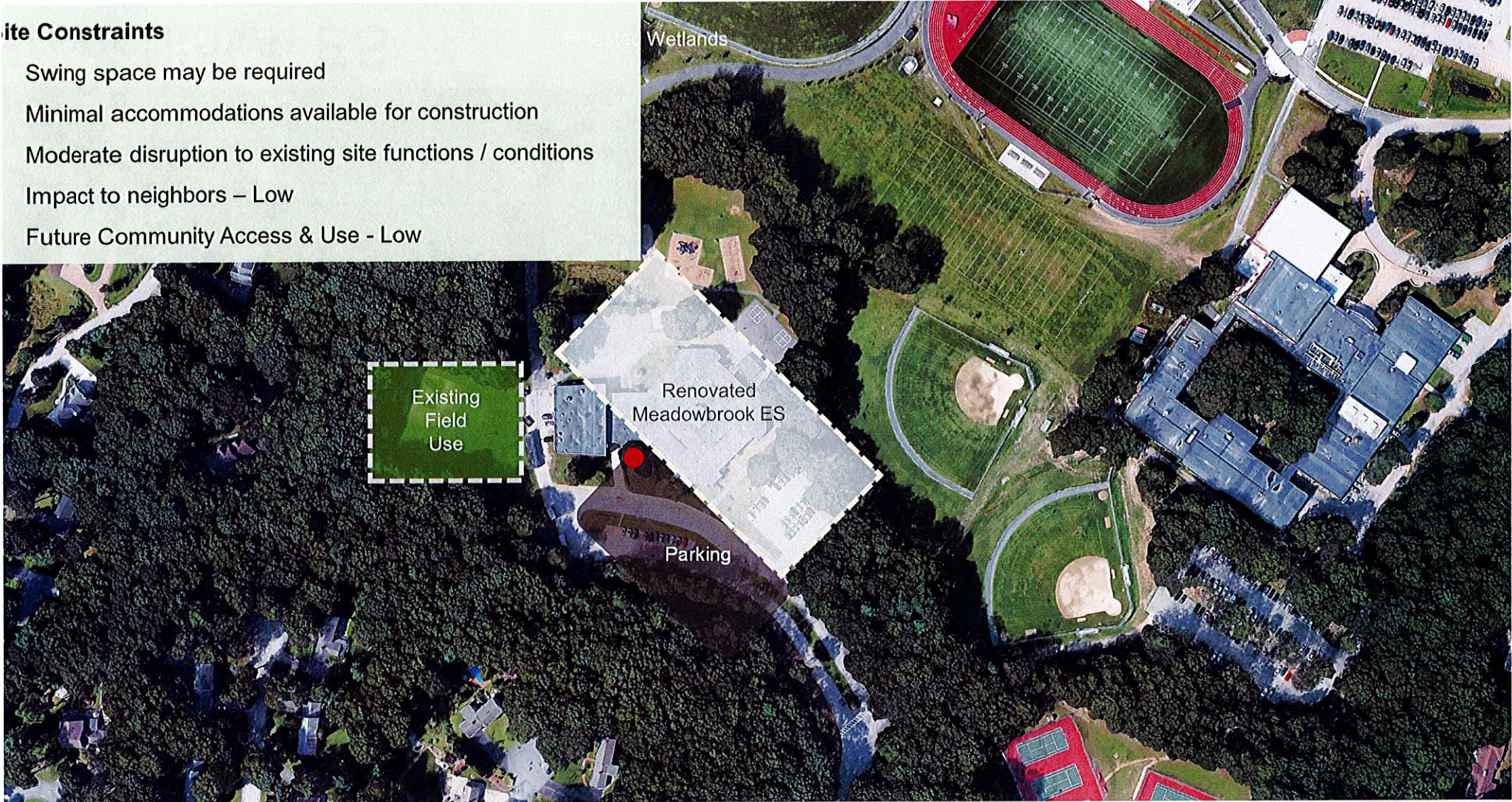
- Site contains forested wetlands
- No swing space required
- Minimal accommodations available for construction
- Significant disruption to existing site functions / conditions
- Impact to neighbors – Low
- Future Community Access & Use - Low

Hanaford ES Grades 1 thru 5 @ 500 Student

Option C

Site Constraints

- Swing space may be required
- Minimal accommodations available for construction
- Moderate disruption to existing site functions / conditions
- Impact to neighbors – Low
- Future Community Access & Use - Low



Meadowbrook ES Grades PK thru K @ 200 Student

Option C

Current Considerations

Congested Parent & Bus Drop Off

Limited queuing lengths



Frenchtown ES

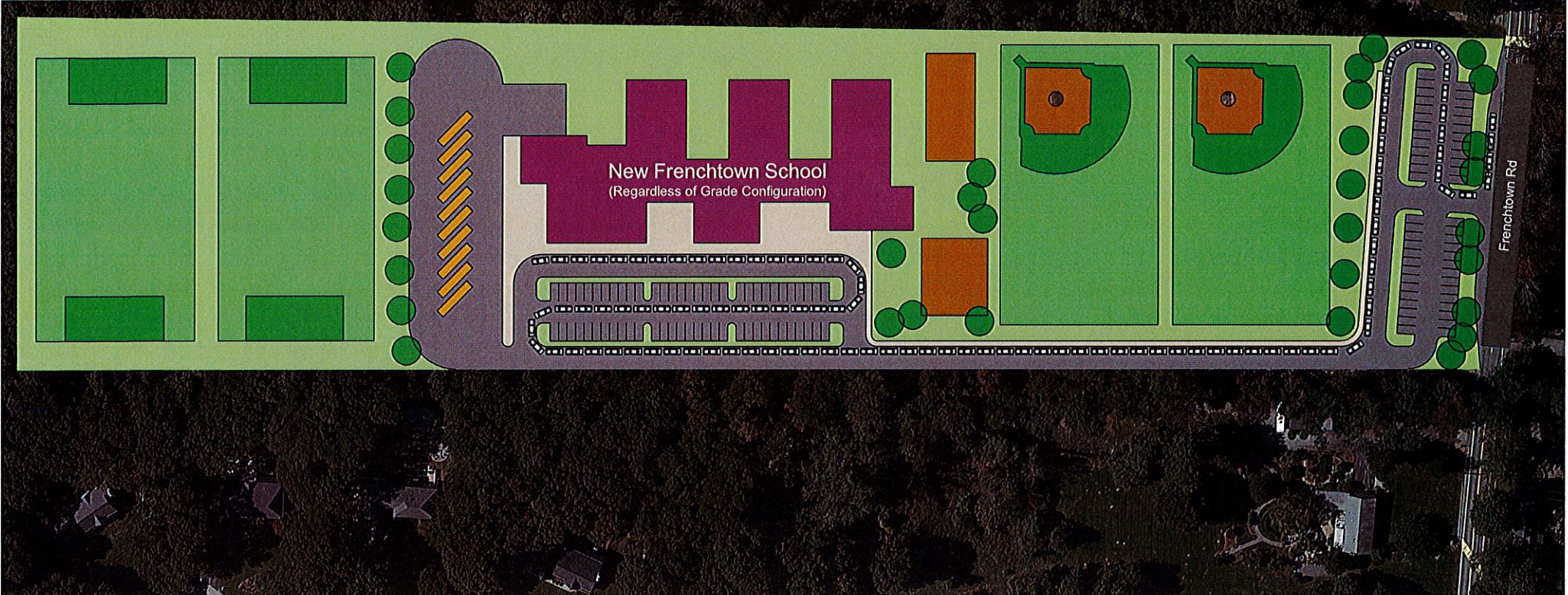
Proposed Improvements

Parent Drop Off & Pick Up Que Length is approx. **105 to 120 vehicles on school property**

Separate Bus Drop Off, widened roads (3 lanes) and increased Parking for Fields

Possible State Roadway improvements (Deceleration / Acceleration, Turning Lanes)

Anticipate Continuous Engagement during the Design Process (Stage III) with Local & State agencies

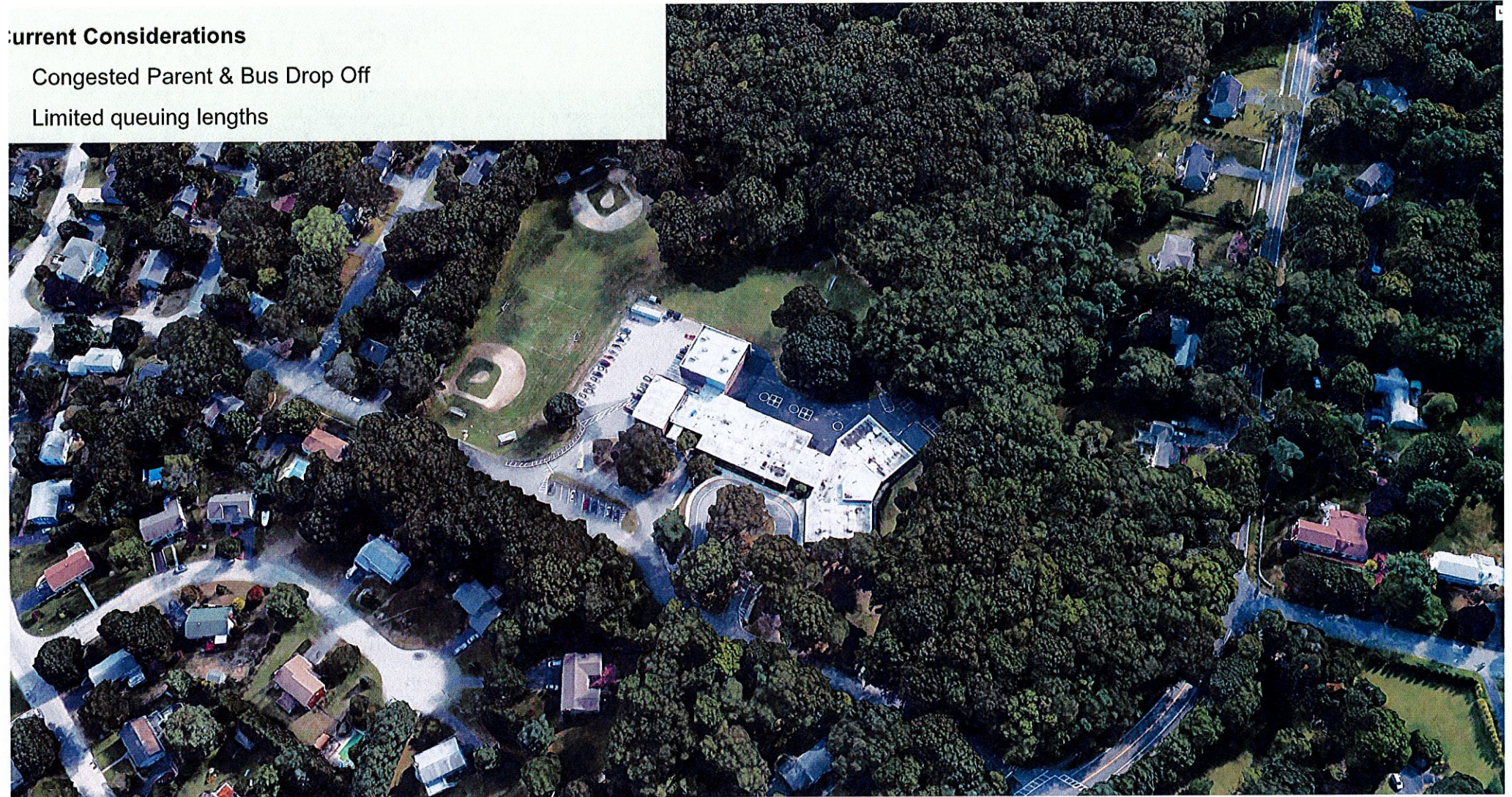


Frenchtown ES

Current Considerations

Congested Parent & Bus Drop Off

Limited queuing lengths



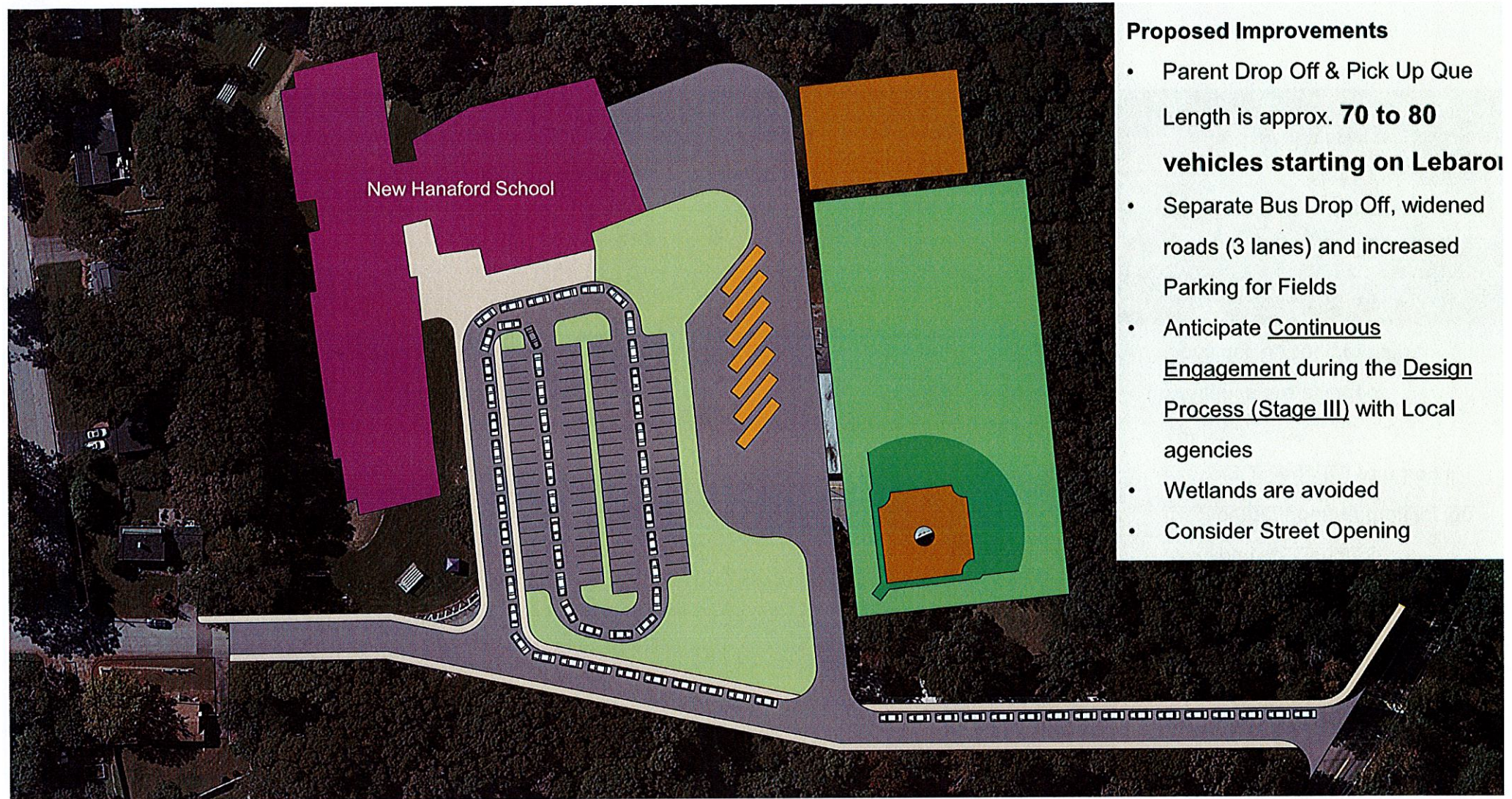
Hanaford ES



Proposed Improvements

- Parent Drop Off & Pick Up Que Length is approx. **70 to 80 vehicles starting on Lebaron**
- Separate Bus Drop Off, widened roads (3 lanes) and increased Parking for Fields
- Anticipate Continuous Engagement during the Design Process (Stage III) with Local agencies
- Wetlands are avoided
- Consider Street Opening

Hanaford ES



New Hanaford School

Proposed Improvements

- Parent Drop Off & Pick Up Que Length is approx. **70 to 80 vehicles starting on Lebaron**
- Separate Bus Drop Off, widened roads (3 lanes) and increased Parking for Fields
- Anticipate Continuous Engagement during the Design Process (Stage III) with Local agencies
- Wetlands are avoided
- Consider Street Opening

Hanaford ES

DRAFT Cost

Option A

Hanaford ES	\$28 million	<i>Add/Reno</i>	<i>K-2</i>
Meadowbrook ES	\$29 million	<i>Add/Reno</i>	<i>PK-2</i>
Frenchtown ES	\$64 million	<i>New Build</i>	<i>3-5</i>
<u>EG High School</u>	<u>\$20 million</u>	<i>Add/Reno</i>	
Total	\$141 million		



DRAFT Cost

Option B

Hanaford ES	\$64 million	<i>New Build</i>	<i>PK-5</i>
Frenchtown ES	\$64 million	<i>New Build</i>	<i>PK-5</i>
<u>EG High School</u>	<u>\$20 million</u>	<i>Add/Reno</i>	
Total	\$148 million		



DRAFT Cost

Option C1

Hanaford ES	\$57 million	<i>New Build</i>	1-5
Frenchtown ES	\$57 million	<i>New Build</i>	1-5
Meadowbrook ES	\$16 million	<i>Reno</i>	PK-K
<u>EG High School</u>	<u>\$20 million</u>	<i>Add/Reno</i>	
Total	\$150 million		



DRAFT Cost

Option C2

Hanaford ES	\$37 million	<i>Add/Reno</i>	1-5
Frenchtown ES	\$57 million	<i>New Build</i>	1-5
Meadowbrook ES	\$16 million	<i>Reno</i>	PK-K
<u>EG High School</u>	<u>\$20 million</u>	<i>Add/Reno</i>	
Total	\$130 million		



What does success look like and what are you most excited about?

